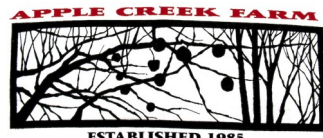


MEET OUR FARMERS



Apple Creek Farm (3)
www.applecreekfarm.me
538 Millay Rd.

Apple Creek Farm was established in 1985 by the Galle family. Now run by the second generation, Jake Galle and Abby Sadauckas, the farm is certified organic and produces grass-fed meats and eggs. Originally wooded, the farm now includes numerous pastures and wooded trails. The farmers raise chickens, cows, goats and sheep and the farm produces eggs, meats, and sheepskins.



Blue Bell Farm (6)
www.bluebellfarmmaine.com
767 Carding Machine Rd.

David Asmussen & Meredith Eilers joined the Bowdoinham farming community in 2013. Dave hails from upstate New York and first put a shovel in the soil in fourth grade when he dug up the back yard to plant radishes. He met his partner Meredith when she was working at the college organic farm. After adventures far and wide through several states, homesteads and farmland, they were excited to put down roots in Bowdoinham where they grow diverse vegetables, herbs and berries. Dave is a graduate of MOFGA's Journey-person program and is proud to be farming on land with an agricultural conservation easement through the Maine Farmland Trust. You can find their produce at the Bowdoinham farmers market, and local restaurants.



Campo di Fiori (1)
www.mainegardendesign.com
212 Fisher Rd.

Campo Di Fiori is a specialty nursery growing hardy wildflowers, ornamental grasses, and select cultivars. In creating the plant palette particular attention has been given to plants that are hardy, robust-growing, and low-maintenance while embodying a more natural or wild aesthetic. The majority of these plants have a long season of interest, and for that reason are particularly useful in keeping our gardens attractive from spring into winter. As both gardener and nature lover, Andrew's goal is to inspire and encourage imagination in the art of garden creating with respect to the dynamic beauty and emotion of nature.



Dandelion Spring Farm (4)
www.dandelionspringfarm.com
961 Ridge Rd.

Dandelion Spring Farm is a certified organic mixed vegetable and herb farm that has been in production in the midcoast for 18 years. Beth Schiller joined the Bowdoinham community in 2018 when she purchased 85 acres of land, with beautiful ridges and soil of statewide agricultural importance. After purchasing the property, she sold an easement to Maine Farmland Trust, to forever protect the land. Tender salad greens and aromatic herbs are the baseline of Dandelion Spring, but they also have squash, and other roots and greens. Their products can be found at the farmers' markets in Rockland and Portland, and at many natural food stores and restaurants along Maine's coast.

This Open Farm & Studio Day Dandelion Spring Farm will be showcasing local artists Allison McKeen, Slow Grits Studio, Winding Rose Studio, Connolly Wood & Craft, Molten Ceramics, and Inciardi Prints. They will also be featuring local food, beer and live music from 10:00 am to 3:00 pm.



Enterprise Farm (5)
www.facebook.com/
Enterprise-Farm-Greenhouse-Farm-Stand
819 White Rd.

Jesse Harriman started Enterprise Farm in 1972 with roots in poultry farming, eventually, as the industry changed, he shifted to vegetable and flower farming. The farm now aims to provide customers with great plants so that they may become successful "farmers" themselves. A wide selection of annual and perennial flowers and healthy vegetable plants are available as well as a wealth of gardening knowledge. In addition, the farm starts hundreds of thousands of plants for truck farmers around Maine. Recently, the farm has begun to sell fresh, locally grown vegetables to our customers! Welcoming visitors 9:00 am to 4:00 pm.



Harvest Tide Organics (9)
www.harvesttideorganics.com
107 & 304 Pork Point Rd.

Please come join us on the farm for a look at our farm operations. Visit the farm at 304 Pork Point (park at the blue shipping container) for tours and explanations of our high tunnel production and our flower U-pick. Visit us at 107 Pork Point for a look at our new washpack facility. Tours start on the hour and half hour from 10:00 am until 1:30 pm.



Peary's Garden (2)
Instagram.com/pearysgarden
218 Main St.

Peary's Garden is in its sixth season as a community growing space and is proud to host 16 members for the 2023 season. Peary's was started in 2017, following the death of Peary Merriman, who was a resident of Bowdoinham Estates and the first person to actually use the space as a garden.

The idea of a community garden was enthusiastically supported at the BCDI "Community Conversations" gathering in 2017. After that meeting, the garden was formally established by a committee of Brian, Lily, and Ian Jerolmack of Stonecipher Farm. Participants receive compost, water access, tools, seeds, tilling and garden advice as part of their membership. Brian has built a beautiful wood-fired pizza oven. The oven's delicious pizza has been the focal point of several community, neighborhood, and garden functions. Residents are welcome to talk with Lily or Brian about using the oven and site for their own functions. We encourage our entire community to come enjoy this beautiful space we have created together.

Please come between Noon and 3:00 pm to tour the garden.



Six River Farm (10)
www.sixriverfarm.com
52 Center Point Rd.

Six River Farm is a certified organic vegetable farm located on the shores of Merrymeeting Bay in Bowdoinham. Starting in 2007, it is owned and operated by Nate Drummond and Gabrielle Gosselin. We, along with our excellent employees, grow twenty-four acres of produce on a total of forty acres of farmland, a combination of owned and leased land. We grow a wide range of vegetables as well as herbs, berries, and cut flowers. Through season extension techniques, including the use of heated and unheated greenhouses, we are able to grow vegetables all year round. We offer our produce for sale year-round at our farm stand in Bowdoinham, at farmers markets in Brunswick, and at local grocery stores.

From 9:00 am to Noon, pick up a map at our farm stand for a self-guided walk along our home fields and check out the offerings by local artist Merrymeeting Mittens. Please no dogs allowed when touring the farm, thank you. Parking is available at our farm stand.



Stonecipher Farm (7)
www.stonecipherfarm.com
1186 River Rd.

Stonecipher Farm is a small organic mixed vegetable and fruit farm. We will be highlighting the "no-till" principles we employ, as well as the biodiverse planting we practice, for best plant health and to benefit native bugs, birds, and amphibians. Tours from Noon to 3:30 pm. Located across the street from Mortimer LaPointe Woodworking. Farm store open 7 days a week from 9:00 am to 6:00 pm.

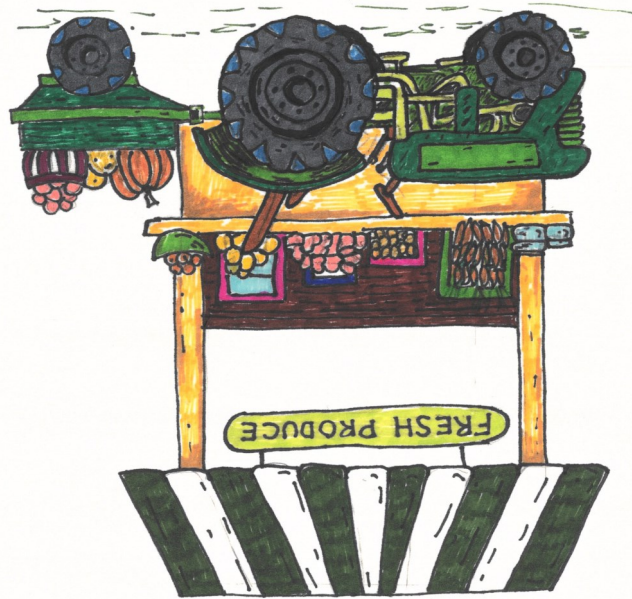


Other Area Farms
www.realmaine.com/
activities/maine-open-farm-day-2023-listings/

The Maine Department of Agriculture, Conservation and Forestry also maintains a statewide list of farms that will have their doors open for the state wide Open Farm Day. If you are coming in from a neighboring town check out RealMaine.com to find a list of participating farms.

farming and arts community

Come celebrate our



BOWDOINHAM, MAINE

JULY 23, 2023

DAY

FARM & STUDIO

OPEN

Welcome to
Bowdoinham



Town of Bowdoinham
13 School Street
Bowdoinham, ME 04008
www.bowdoinham.com

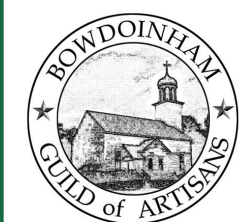
Visit us on Facebook!



Bowdoinham Historical Society
bowdoinhamhistoricalsociety.org

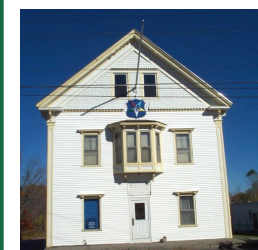
Founded in 1970 by residents hoping to discover, study, preserve, and make available records and items from Bowdoinham's past, the Bowdoinham Historical Society (BHS) has played an important role in town activities since that time. BHS owns three properties: the Meeting House & Carriage Shed at 7 Browns Point Road; Jellerson School at 2 Center Point Road, Bowdoinham's last 1-room school where we host classes in a living history 1910-11 school day; and Merrymeeting Hall at 27 Main Street, open for BHS, town, public, and private events and activities. Our office and research room is located on the lower level of Merrymeeting Hall next to Merryreading Books. The theme for 2023 is Bowdoinham and Beyond: 1930-1960.

FMI contact Betsy Steen at bayviewess@comcast.net.



Bowdoinham Guild of Artisans
www.bowdoinhamartisans.com

The Bowdoinham Guild of Artisans is a group of fine artists working to bring their creative visions to life, while sharing an appreciation for their local community. The Guild strives to make high quality, well-made artistic goods accessible on a community level. The Guild of Artisans works to nurture artists by creating a supportive network, and providing access to exhibitions and educational opportunities.



Bowdoinham Masonic Lodge, Village Lodge #26

Masonry is one of the oldest Fraternities in the world and their charity within this community is extensive. Come visit our lodge, meet your local chapter, and learn more about our work in Bowdoinham.

NEW: Passport Challenge!

New for this year we are introducing a Passport Challenge. Get this passport initialed at participating farms and studios and win prizes!



The first 20 passports turned in to the town office between July 23-27 will receive a signed print of this year's brochure cover art and grand prize winner(s) will be randomly drawn for a gift basket filled with local farm offerings and small pieces of art from our local vendors.

Valid passports must document at least one visit. Passports can be dropped off at the town office or left in our drop box after hours at 13 School Street in Bowdoinham. Please provide your contact information below if you would like to be considered for the contest. All winners will be notified by August 4th. If you have any questions please contact: planning@bowdoinham.com

We would like to thank the following businesses for their generous prize donations: Just Playing With Glass, Fiddlehead Leatherworks, Morphee Creations, Winding Rose Studio, and Bowdoinham's Town Clerk: Tina Magno.

Name _____
Address _____
Phone Number _____
Email _____
Did you join the bike tour: Y or N _____
Please provide us any feedback on your experience _____

MEET OUR ARTISTS, CRAFTERS & WOODWORKERS



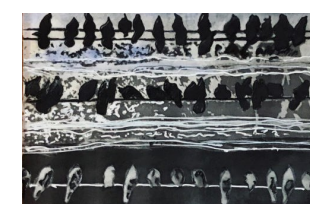
Cathance River Gallery (15)
www.cathancerivergallery.com

Offering paintings, collages and assembles, wood carvings, wood burl art, homemade guitars, and artistic furniture. A cooperative of five Bowdoinham artists (Jane Page Conway, Mark Donovan, Howard Solomon, Wayne Sanford and Bill Stanton) and three Brunswick artists (Robery Bryan, Bill Robizek and Dan Warren) plus guest artists from time to time. The gallery will have on-going encaustic art and woodworking demonstrations during Open Studio and Farm Day.



Fiddlehead Leather Works (18)
Bowdoinhamartisans.com

Wes Baden of Fiddlehead Leather Works will have his work on display at the Merrymeeting Arts Center.



Jane Page-Conway Fine Art Photography (15)
www.janepageconway.com

Jane has been making and altering photographic images for over 30 years. She's an inquisitive experimenter, exploring both traditional wet darkroom & alternative photographic processes such as: infrared film, Polaroid manipulations and emulsion transfers, hand-tinting black and white photographs, cyanotype & kallitype. Jane has learned to restructure her thinking in the digital age, blending the old with the new. And now she practices the ancient painting medium of encaustic wax with her photography.



Just Playing with Glass (14)

Just Playing With Glass is a fused glass and found glass creative outlet. Creating beautiful items for every day and special occasion use. As a continuous learner Amy Wagner is always learning and experimenting with materials and techniques hence the name "Just Playing With Glass." She will be demonstrating upcycling glass projects from found glass, such as luminaries, bird feeders, planters, dishes, windchimes, etc. As well as using a mini kiln making pendants, fidget stones and blessing stones at Merrymeeting Hall from 10:00 am - 3:00 pm.



LaPointe Antiques & Restoration (8)
www.mortimerlapointe.com

Mortimer builds new furniture from reclaimed wood and repairs and restores antiques. The pieces are crafted from a constantly changing collection of vintage reclaimed lumber. The beauty, shape and texture of each piece of wood is truly unique.



Merrymeeting Arts Center (18)
www.merrymeetingartscenter.org

Since opening in September 2007, Merrymeeting Arts Center (MAC) has been an active member of the Bowdoinham community. Inspired and guided by the eclectic spirit of Bryce Muir, MAC encourages art, education and community celebrating the cultural heritage and natural environment of Merrymeeting Bay. Bryce viewed "the arts" in the broadest sense and "artists" as all those who make art in any genre. Our gallery and studio offer opportunities for our community and beyond to express themselves as teachers, makers, and supporters of the arts.



Merrymeeting Arts Studio (19)

Merrymeeting Arts Center will host artists from Bowdoinham Guild of Artisans in our Gallery as well as holding a drop-in Beeswax Wrap Workshop in the Studio! Make a set of three wraps (S, M, L) for a suggested donation of \$5. It's quick, easy, and worth a visit to the studio and gallery to add your support to the arts in Bowdoinham! The Gallery will be open 11:00 am to 4:00 pm.



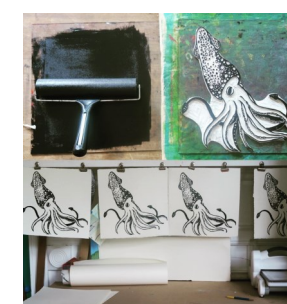
Merrymeeting Mittens (10)
www.bowdoinhamartisans.com

Joanie Mitchell creates felted wool mittens from gently used 100% wool sweaters. The technique includes felting the sweaters first then cutting out the mitten pattern and sewing them together by machine. She uses cashmere for the lining when available or fleeces. Various sizes are available to accommodate individual hands. Joanie finds joy in giving new purpose to the life of a wool sweater. "Wool Sweaters for Happy Hands" is her motto. Visit her at Six River Farm from 9:00 am - Noon.



Merrymeeting Stained Glass (14)
www.bowdoinhamartisans.com

Meg Zellinger is a stained-glass artist, who creates two-and 3 dimensional pieces, both abstract and representational, occasionally collaborating with a wood sculptures with 3 dimensional pieces. On Open Farm and Studio Day, she will be demonstrating techniques of working with stained glass while working on a current project at Merrymeeting Hall from 10 am - 3 pm. While she will not have items for sale, photographs of her work available for review.



Morphee Creations (13)
www.morpheecreations.com

Situated in the heart of Bowdoinham Village, Morphee Creations operates out of a 200-year-old home surrounded by a cottage flower and vegetable garden. Manon Whittlesey is a designer, artist, and mentor at Spindleworks Offsite, in Hallowell. You have seen her work around Bowdoinham in the form of logos (MSAD 75, Bowdoinham Community School, Town of Bowdoinham, The Three Robbers) the library mural, holiday posters, and more



Starrocks (1)
www.bowdoinhamartisans.com

Lynn Sternfels from Starrock Designs will be at Campo di Fiori nursery from 9:00 am to 3:00 pm with her beautiful one of a kind botanical print silk scarves.



Watersong Music (17)
www.watersongmusic.org

Earl Bigelow created Watersong Music for the sharing and teaching all the facets of music. Recording, performance and teaching music has become Earl's happy occupation, and in his studio he is able to do all three. Come check out Earl's music studio and see where the music happens: 10:00 am to 2:00 pm.



William Stanton (15)
www.bowdoinhamartisans.com

Bill retired from a career in civil engineering in 2003. He works out of his studio in the old Cathance River Gallery in Bowdoinham. He paints with acrylics and oils, mostly doing landscapes of Bowdoinham.



Winding Rose Studio (4)
Facebook.com/
WindingRoseStudio

Artist Wendy Rose will be at Dandelion Spring Farm offering quilts, balsam sachets, tote bags, and other handcrafted fiber products.

Please note there are many more artists and artisans in our community than can fit here. Look for them at our local galleries, on the Bowdoinham Guild of Artisans' page, and tabling at our local events.

Welcome to Bowdoinham
 "On Beautiful Merrymeeting Bay"

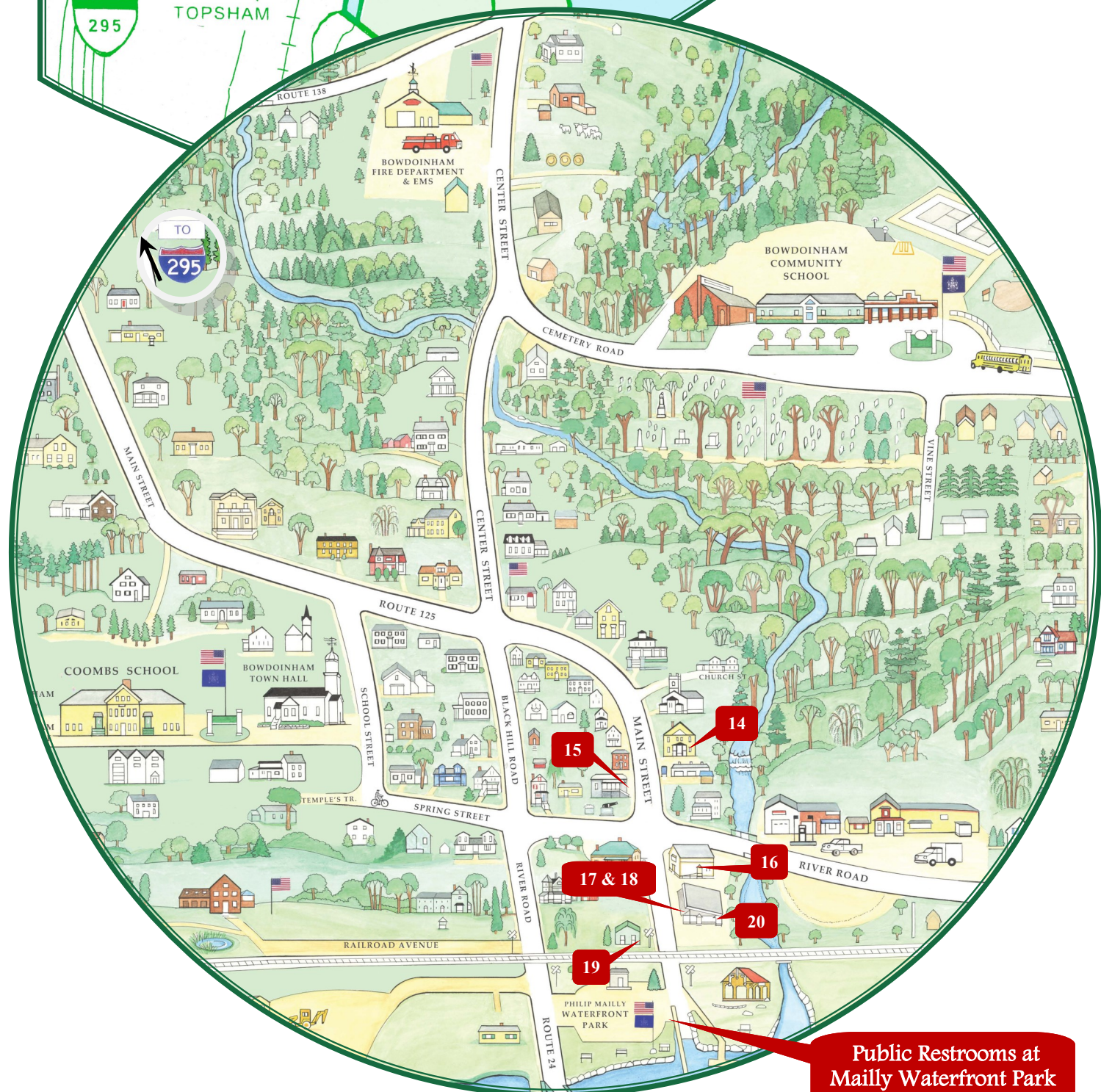
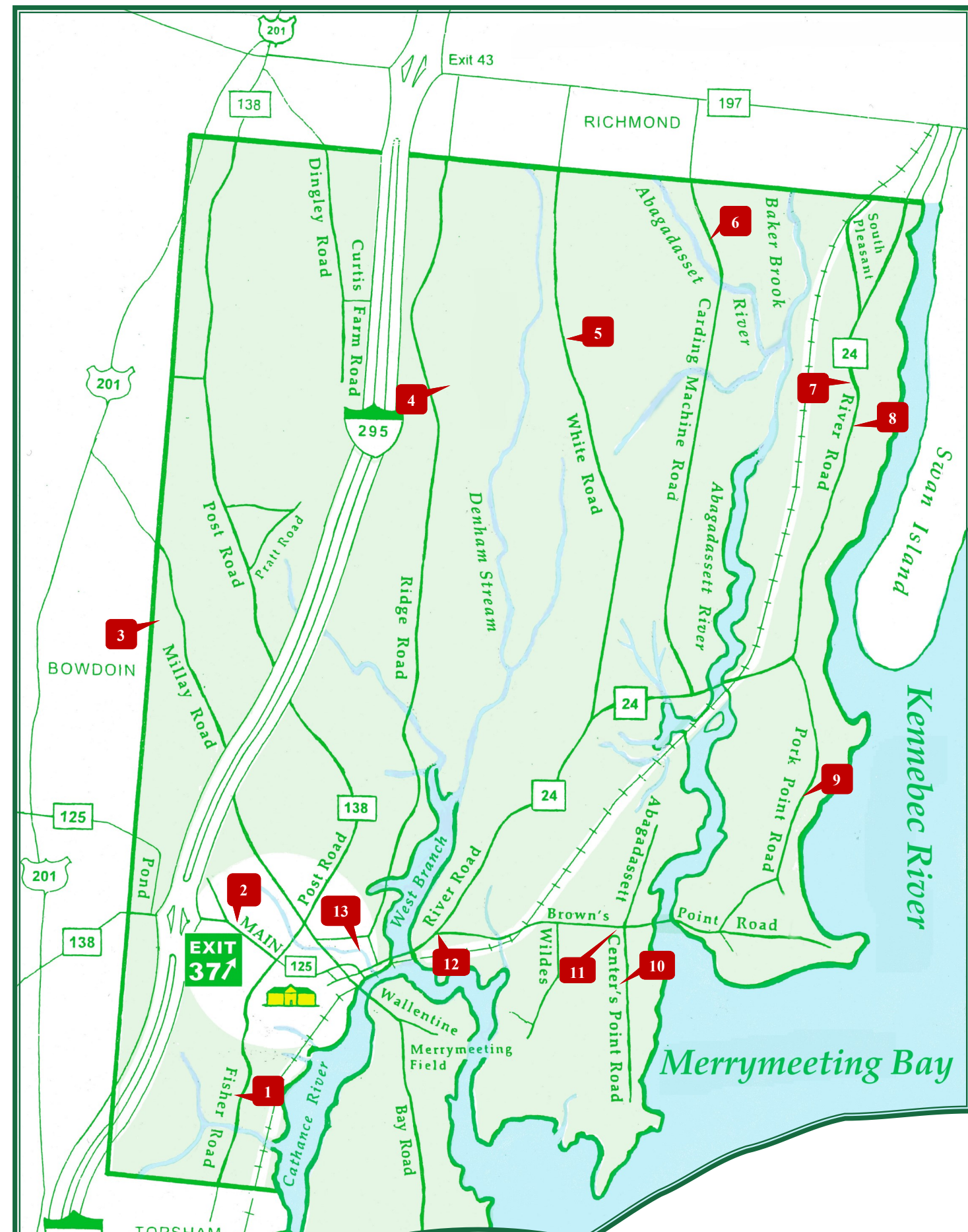
Though the 1600's saw attempts at settlement, it was not until 1730 that permanent settlers, many with names still common in Bowdoinham, built along the shores of Merrymeeting Bay and the Abbagadasset River. On September 18, 1762, Bowdoinham was incorporated, named for Peter Bowdoin, a religious refugee from France, who had bought the tract of land that included this area. The first church was built in 1765, and three school districts were authorized in 1791. At one point Bowdoinham stretched from the Richmond-Gardiner line to the Topsham line and west to include Bowdoin.

Agriculture has had a long history in Bowdoinham, pre-dating the town's incorporation in 1762. The most fertile, well-drained soils have been used for vegetables and first production, while the less well-drained soils have favored animal raising and hay production. During the 18th century, 95% of the townspeople raised their own food and fiber and sold the surplus to local people or businesses. By the 19th century, the demands of town and city populations created a larger marketing opportunity to serve the increasing population that no longer had access to farm land. During the 20th century, the production of farms was geared to the wholesale market. The last quarter of the 20th century saw the beginning of the change from wholesale marketing to a more intensive focus on retail customers. This initial focus was intensified by the "organic" and "buy local" desires of the Maine population which displays itself in restaurant offerings, summer and winter farmers' markets, food clubs and "community supported agriculture". The 21st century has seen a burst of new farms in Bowdoinham.

Bowdoinham's village is located on the banks of the Cathance River. Its proximity to Interstate 295, Brunswick, Topsham, Lewiston, Auburn, Augusta, and Portland make it an ideal place to live, visit, or locate a business. Named "A Very Crafty Town" by Down East Magazine in 2008, Bowdoinham is home to many well-known artists whose work is a direct reflection of the natural beauty of the area. In the Cathance Landing Building on the waterfront you will find the Merrymeeting Arts Center. Up on the hill, in the old high school building, you will find one of the best little libraries in the state and the historic town hall where visitors gather for contra dances, art shows and the longest-running plant sale in the state. The Bowdoinham Community School is a top-ranking K-5 elementary school built mainly from donated lumber and labor along with money raised from several years of local chicken barbecues. Bordering the school, kids and adults can be seen enjoying the baseball fields, a skating rink, a tennis court and a basketball court. In the center of town, Maily Waterfront Park features an easily accessible public boat launch, picnic tables, a gazebo, and public restrooms. During the summer, the park is home to free Sunday concerts.

A short boat ride will find you in the middle of Merrymeeting Bay, an ecological wonder. Merrymeeting Bay drains 38% of the freshwater in the state; its watershed comprises an area totaling some 10,000 square miles. The Bay is located in Midcoast Maine at the confluence of six rivers: the Cathance, Muddy, Abbagadasset, Eastern and—two of Maine's largest rivers—the Kennebec and Androscoggin. While generally considered an estuary, biologically, the Bay is classified as tidal riverine and geologically, as an inland delta. The Bay is for all intents and purposes 100% freshwater. Narrow river restrictions at the Chops and Thorne Head slow the incoming salt tide from 17 miles downstream and restrict the outgoing volume of fresh water draining more than a third of the state. It is the backed up freshwater rising 4-6 feet against the advancing salt water that makes the tide. The Kennebec is, in fact, tidal all the way to Augusta. The Bay is a 9,000 acre system of tidal freshwater marshes and open water that provides premier spawning habitat as well as being the largest staging ground in the northeast for migratory waterfowl. The Bay is internationally significant for its many rare and endangered plants and animals.

Bowdoinham's location on Merrymeeting Bay led to the growth of an economy based on a blend of maritime crafts; fishing and boat building, combined with farming, and associated home industry. In the winter, fishing shacks appear on the river by the village center, continuing down the river and into the bay. Visitors and locals gather to fish for the small and delicious Atlantic Smelt. Once a year, the townspeople come together in the park during mid-September to "Celebrate" its birthday. Celebrate Bowdoinham is a celebration of Bowdoinham history, culture, arts, ecology, agriculture, commerce and the wonderful people that live here and call Bowdoinham home. It's Bowdoinham's high quality of life and strong sense of community that led to it being named one of the "Best Places to Live in Maine" by Down East Magazine.



Public Restrooms at Maily Waterfront Park

OPEN FARM DAY - SCHEDULE

Farm & Studio Tours — Starting at 9am (hours vary)

- (1) **Campo di Fiori**
 212 Fisher Rd.
9am-3pm
 Explore Andrew's naturalistic gardens and nursery. Lynn Sternfels from Starrock Designs will be at nursery from 9:00 am to 3:00 pm with her beautiful one of a kind botanical print silk scarves. 
- (2) **Peary's Garden**
 218 Main St.
Noon-3pm
 Come tour Bowdoinham's community garden. We look forward to seeing you there! 
- (3) **Apple Creek Farm**
 538 Millay Rd.
10am-2pm
 Join farmer-led tours at 11am, 12pm, and 1pm. Meet the animals, enjoy activities for children, or shop in the farm store. Please dress for walking over uneven ground, bring a cooler, and leave dogs at home. 
- (4) **Dandelion Spring Farm**
 961 Ridge Rd.
10am-3pm
 Come enjoy local food, beer, art, and live music. 
- (5) **Enterprise Farms**
 819 White Rd.
9am-4pm
 Welcoming customers and visitors to enjoy our farm. 
- (6) **Blue Bell Farm**
 767 Carding Machine Rd.
9am-Noon
 Tour the hoop-houses and perennial fruit plantings. 
- (7) **Stonecipher Farm**
 1186 River Rd.
Noon-3:30pm
 Offering tours of our "no-till" farm. Also the farm store is open daily from 9am-6pm. Located across from Mortimer LaPointe Woodworking. 
- (8) **LaPointe Antiques & Restoration**
 1191 River Rd.
9am-5pm
 Tours of the workshop and a restored historic Chamberlain carriage house. 
- (9) **Harvest Tide Organics**
 304/107 Pork Point Rd.
10am-1:30pm
 Tours every 30 minutes at the farm and u-pick flowers at 304 Pork Point Rd. (Park at blue shipping container) and the new wash-pack facility at 107 Pork Point Rd. 
- (10) **Six River Farm**
 52 Center Point Rd.
9am-Noon
 Pick up a map at our farm stand for a self-guided walk along our home fields. Merrymeeting Mittens will also be here from 9am-noon. Please no dogs allowed on the farm tour. Park by our farm stand. 
- (11) **Jellerson School**
 2 Centers Point Rd.
9am-4pm
 Visit Bowdoinham's last one room schoolhouse where Bowdoinham Historic Society hosts classes in a living history 1910-11 school day. 
- (12) **Meeting House and Carriage Shed**
 7 Brown's Point Rd.
9am-4pm
 See the Historical Society's 2023 display "Bowdoinham and Beyond— 1930-1960". 
- (13) **Morphee Creations**
 18 Ridge Rd.
10am-3pm
 Visit Manon Whittlesey's studio at this 200-year-old home surrounded by cottage vegetable and flower gardens! 
- (14) **Merrymeeting Hall**
 27 Main St.
10am-3pm
 Visit the Hall to see live glass demonstrations featuring Just Playing with Glass and Merrymeeting Stained Glass. 
- (15) **Cathance River Gallery**
 18 Main St.
10am-4 pm
 Welcoming visitors to our gallery. We will also have on-going encaustic art and woodworking demonstrations. 
- (16) **Masonic Lodge**
 Corner of Main St. and River Rd.
10am-2pm
 Hosting a farmers' breakfast to fuel your adventure. Stop in to meet the members of your local chapter and learn more about their work in Bowdoinham. 
- (17) **Watersong Music**
 9 Main St.
10am-2pm
 Come check out Earl's music studio and see where all the magic happens. 
- (18) **Merrymeeting Arts Center**
 9 Main St.
11am-4pm
 Hosting artists from Bowdoinham Guild of Artisans. 
- (19) **Merrymeeting Arts Studio**
 6 Main St.
11am-4pm
 Holding a drop in beeswax Wrap Workshop in the Studio! Make a set of three wraps (S, M, L) for a suggested donation of \$5. 
- (20) **Bowdoinham Food Pantry**
 9 Main St.
10am-3pm
 Offering tours of the raised beds built utilizing hügelkultur and the food pantry. A silent auction to benefit the pantry will be held all day. 

Save the Date
Open Farm & Studio Day!
Sunday, July 28, 2024
 Always the fourth Sunday in July

Explore Merrymeeting Bay Bike Rides — Starting at 10am



Merrymeeting Trailblazers and Maine Kennebec Estuary Land Trust are hosting the Explore Merrymeeting Bay Bike Tour, visiting the farms, and exploring the scenes of Open Farm Day. The ride will include up to five farms and studios covering 25 miles total.

The ride will leave from Maily Waterfront Park at 10 am. We'll start along the shores of Merrymeeting Bay to Richmond's waterfront park, visiting two farms along the way. There is a turn-back option at the second farm for a 12-mile ride. We'll then continue to one of Bowdoin's newest farms and finish by visiting a diversified livestock farm.

Or you can create your own ride and explore the farms and studios at your own pace. Join us to explore the Bay and learn about Merrymeeting Trail!

Barbeque & Music 3pm — 6pm

Maily Waterfront Park
 1 Main Street
3pm-6pm Enjoy live music by Shindig and Peter Galloway starting at 3 pm in the gazebo.



Western Massachusetts fiddler David Breguet, Scottish-born guitarist John Kinnear, and multi-talented bassist Rick Ottman form Shindig; a musical trio celebrating foot-stomping Celtic tunes.

Peter Galloway has been called "a master of free verse" in the Boston Globe. His albums have spanned styles from '60's rock and roll, to "jazzy folk", to atmospheric Americana.

4pm-6pm Join us for a town sponsored barbeque hosted by the Bowdoinham Food Pantry featuring fresh foods from local farms starting at 4pm.



- Menu**
 Items subject to change
- ◊ BBQ Chicken
 - ◊ Potato Salad
 - ◊ Baked Beans
 - ◊ Coleslaw
 - ◊ Desert

Cost
 Donations to benefit the Bowdoinham Food Pantry.

Thank you local farmers for always providing fresh ingredients for the BBOs over the years!

*Town & Village Maps by Margaret Campbell. Photographs by farmers, artists, crafters and woodworkers.