

# Implementation of the 2005

## Waterfront Plan

And redevelopment of Public Works



A project of the 2019 Comprehensive Plan Committee from the 2014 Comprehensive Plan

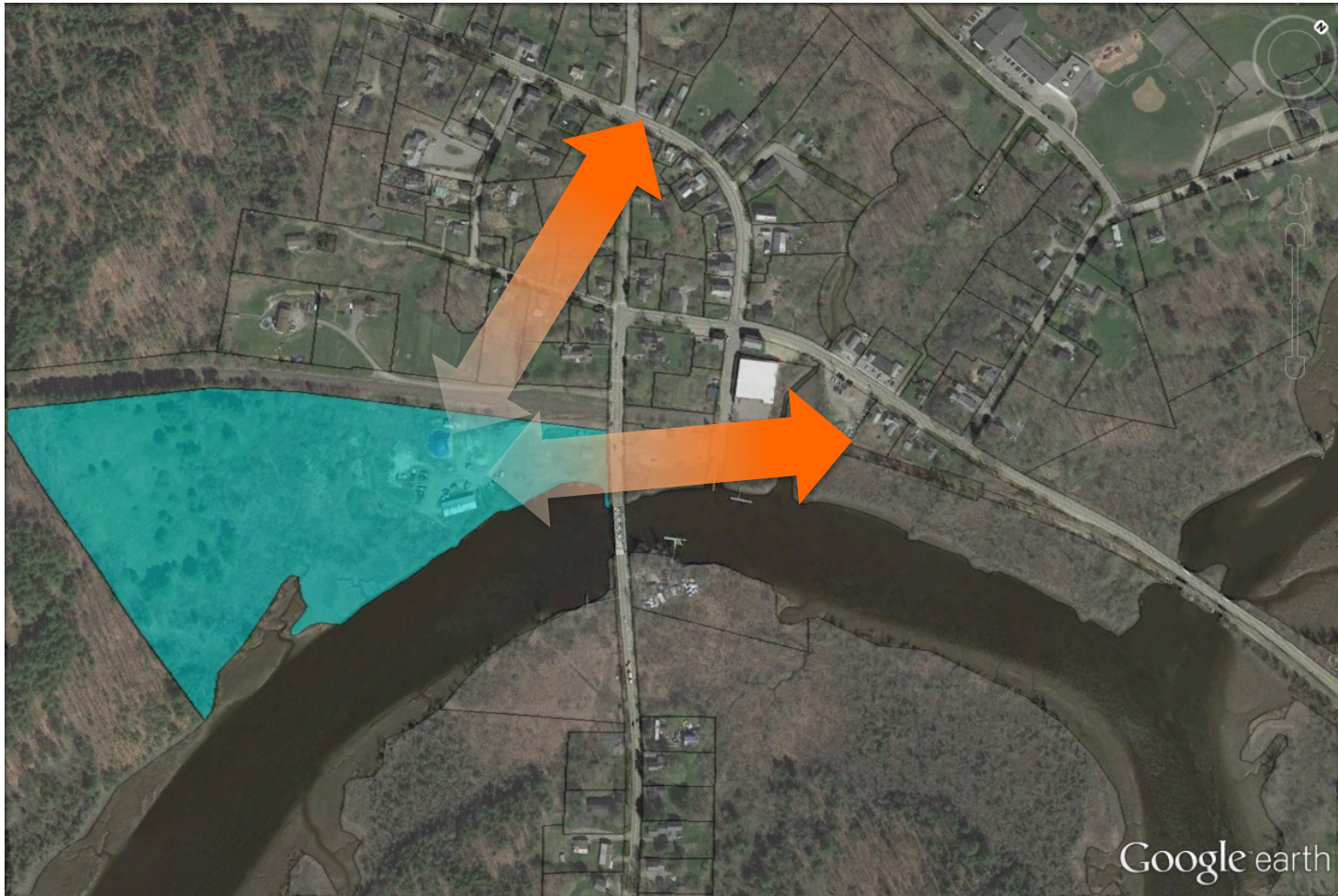
# Waterfront Plan Implementation

All town owned lots, but only Maily Park is utilized by residents.



# Public Works Redevelopment

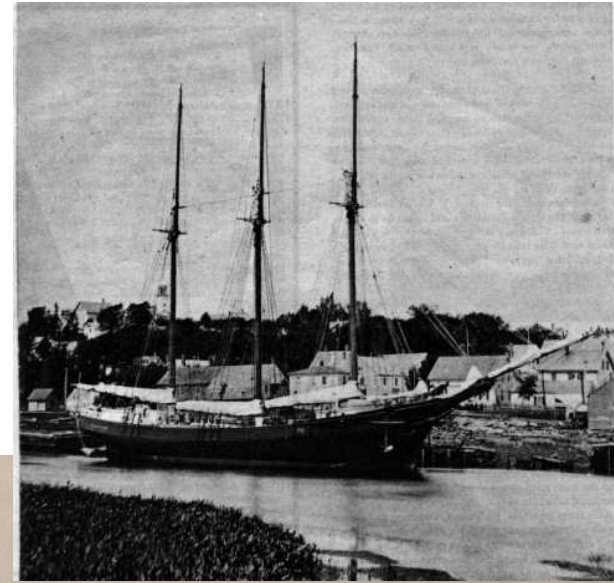
Redevelopment is focused on public works with the intention of creating positive impacts for the whole waterfront, downtown and the Bowdoinham community.



# History of Waterfront and Public Works lot

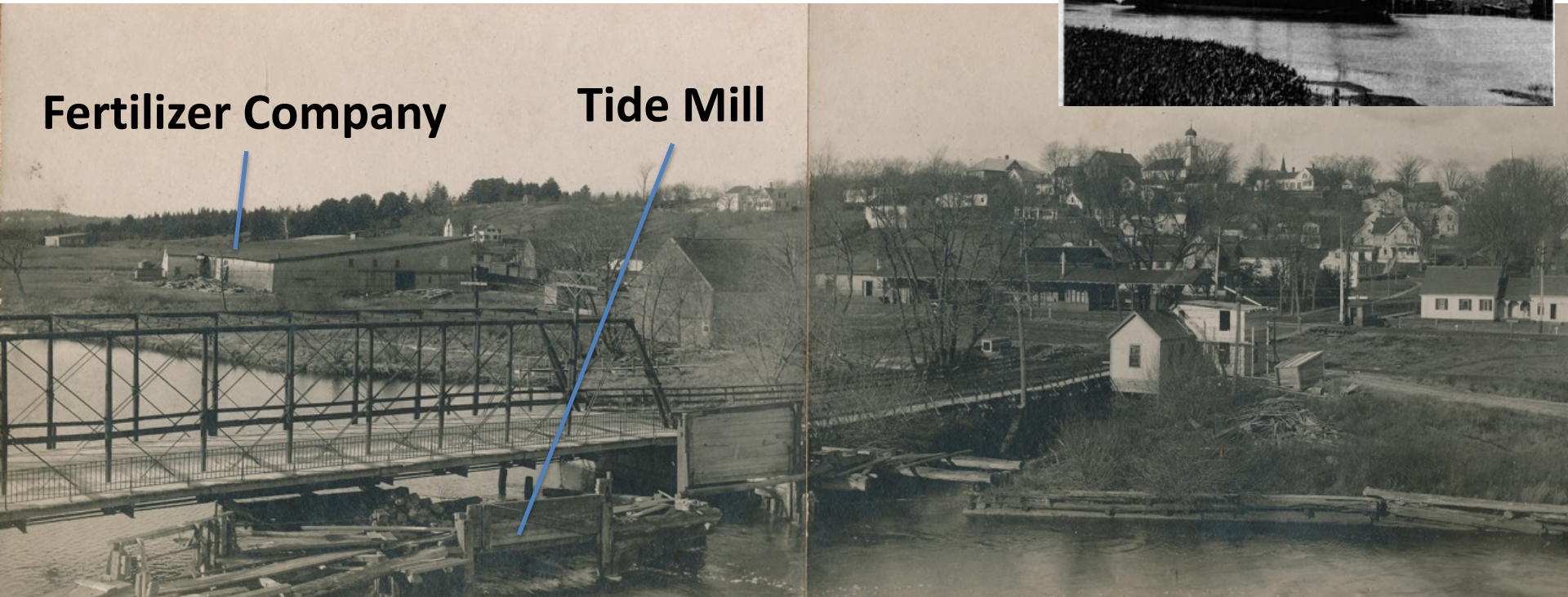
Shipbuilding, Lumber Mill  
Railroad Station ~1850

Sagadahoc Fertilizer  
Company 1910 -1965



Fertilizer Company

Tide Mill



# History of Public Works lot

**Corenco Corporation 1967 -1986**



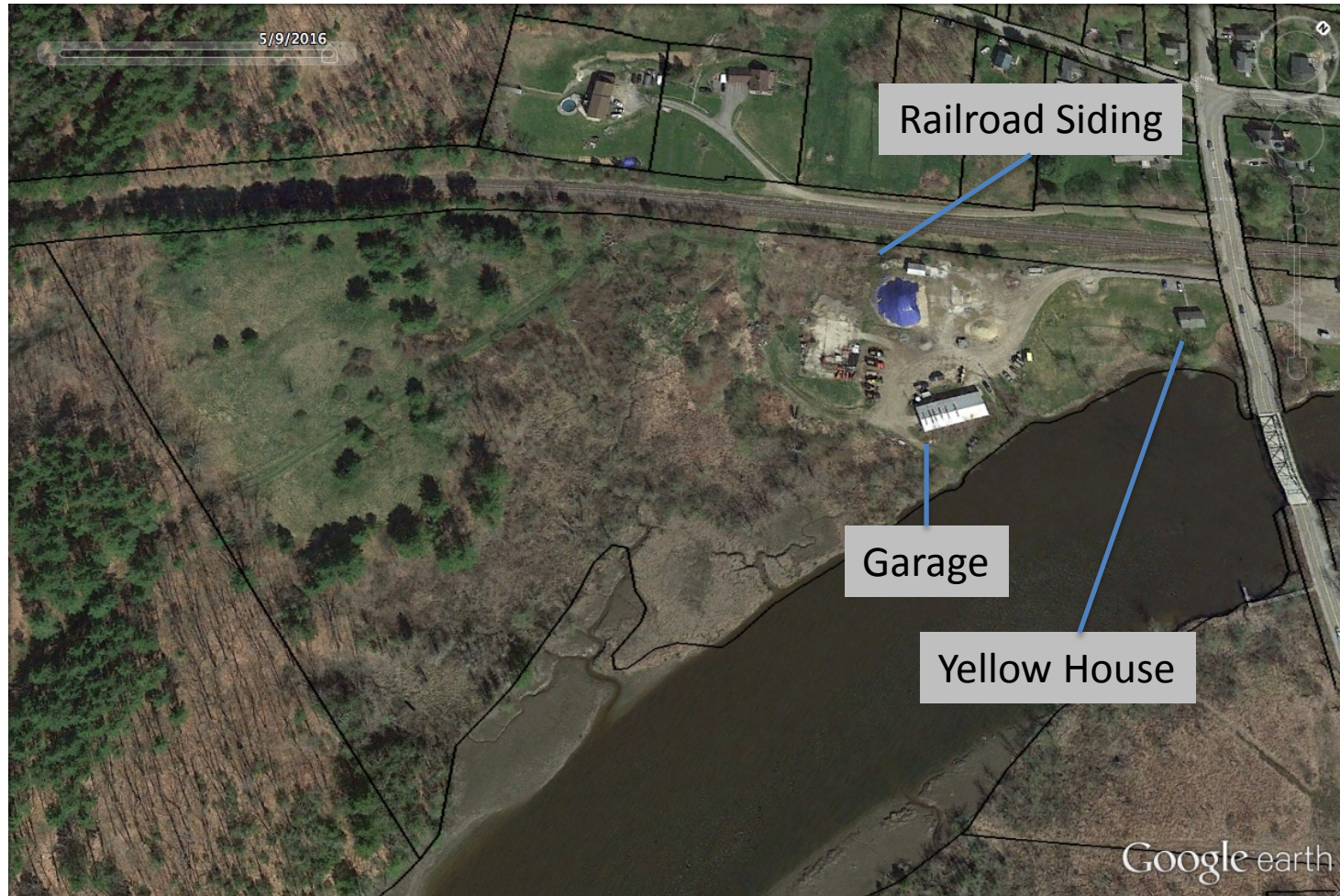
**Central Chemical 1986 -1990**



**Bowdoinham  
Purchased in 1998**

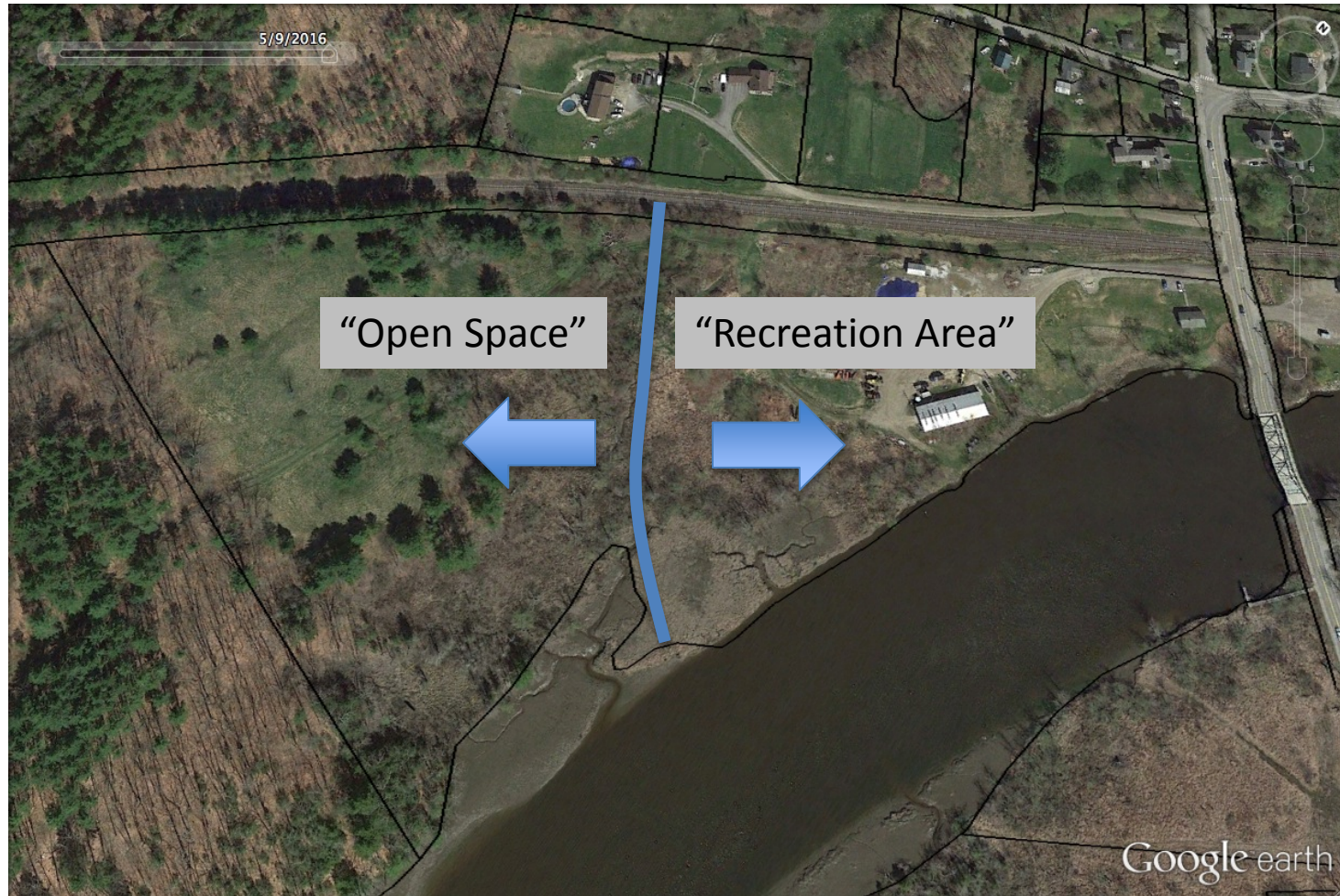


# Public Works at the Waterfront



# 2005 Plan Recommendation

The waterfront plan envisions two areas for this lot, an “Open Space” and a “Recreation Area”



# 2017 Work at “Open Space”

Hiking trail marked and mowed, informational kiosk with map installed  
Bowdoin College Common Good Day volunteers improved trail to river.





# 2018-Richardson and Associates Landscape Design Consultants

- Reviewed:
  - Waterfront Plan 2005
  - Input from the 2014 Comprehensive Plan process
  - Community Conversations
- Presented initial draft designs to the CPC
- Online survey about interests in elements of the draft
  - Identified areas of most interest and support
- Celebrate Bowdoinham
  - Additional ideas were gathered at a large interactive display of the original draft designs

# 2018 Baker Design Consultants

- Consultants

- Gathered information, presented ideas, refined their plans at several public CPC meetings in 2018

- Hosted two public forums to gather community feedback at 1) Town Hall and 2) Bowdoinham Community School.

- Presented final site design to CPC at the regularly scheduled February 2019 meeting

- CPC Members now meeting with many groups and organizations in Bowdoinham (like you!)

- Assuring community members see the site plan

- Gathering input for next phases

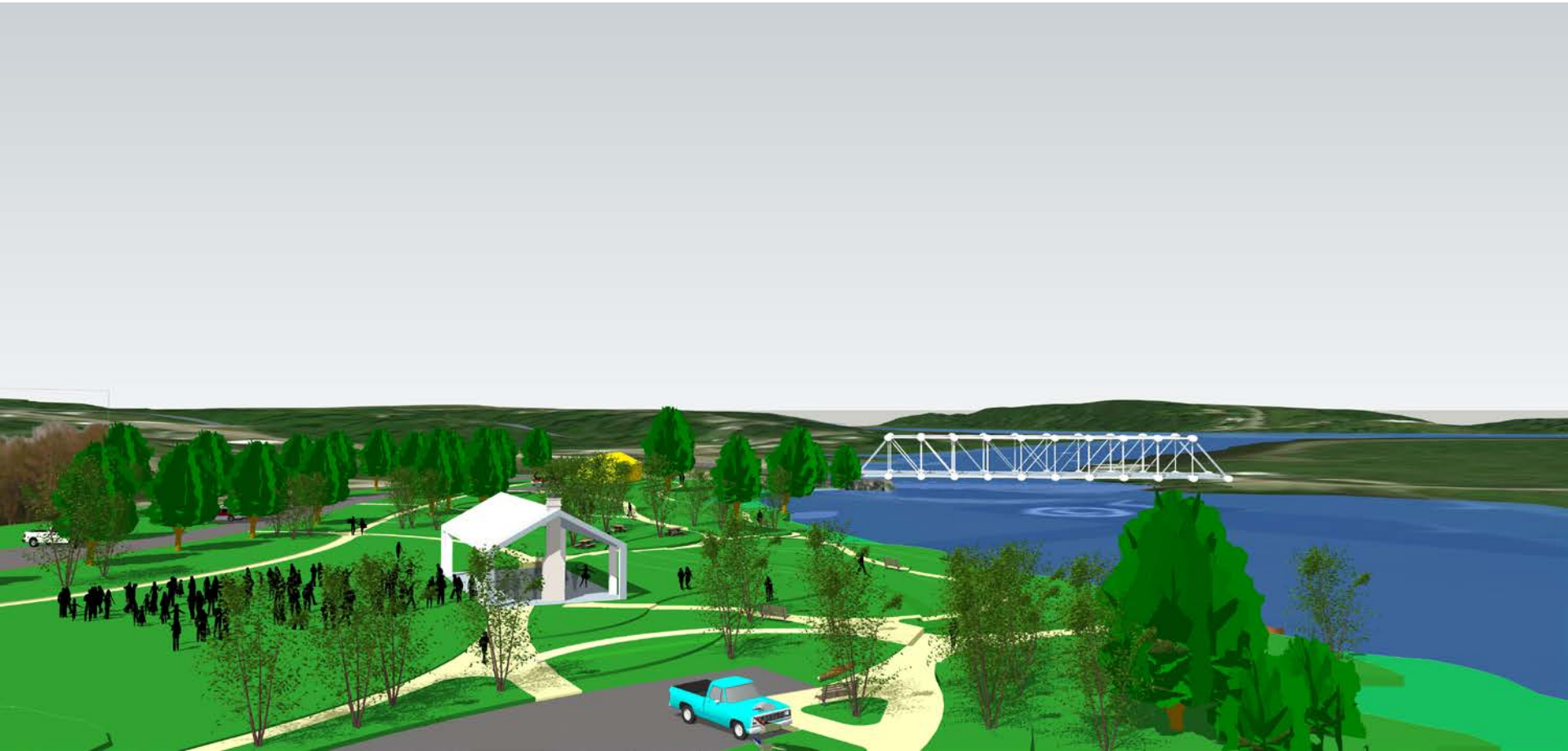
# OVERALL CONCEPT PLAN



Richardson & Associates, Landscape Architects / 1000 Main Street, Portland, ME 04101  
 Original Issue Date: \_\_\_\_\_  
 Issued for: \_\_\_\_\_  
 Revision Date: \_\_\_\_\_

Scale: 1"=60' (original drawing size)  
 Original Drawing Size: 24" x 36"

**CONCEPT PLAN Overall**  
 Public Works Site Redevelopment  
 Town of Bowdoinham, ME



# Opportunities for Ongoing Input

- Vote June 12<sup>th</sup> at town meeting.
  - Affirm the broad vision and direction that was presented here.
- Join a “park elements” committee:
  - Boat Launch
  - Pavilion
  - Gardens
  - Trails
  - Programming
  - Active Recreation areas (basketball? bocce? shuffleboard?)
  - Others?

# Thank You!

See you at Town Meeting on June 12<sup>th</sup>, 7:00pm  
Bowdoinham Community School Gym

