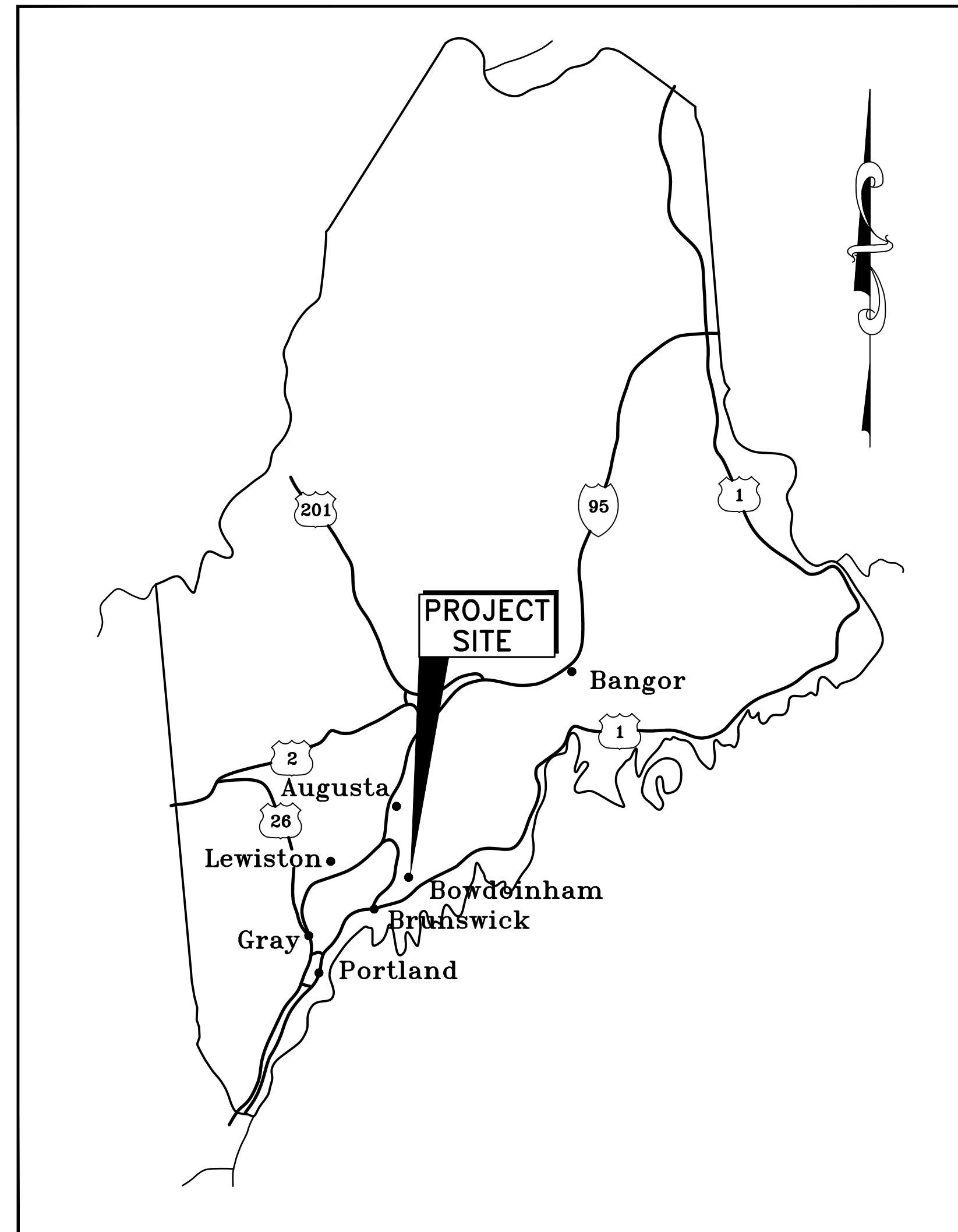


CONSTRUCTION DRAWINGS

TOWN OFFICE PARKING EXPANSION

TOWN OF BOWDOINHAM

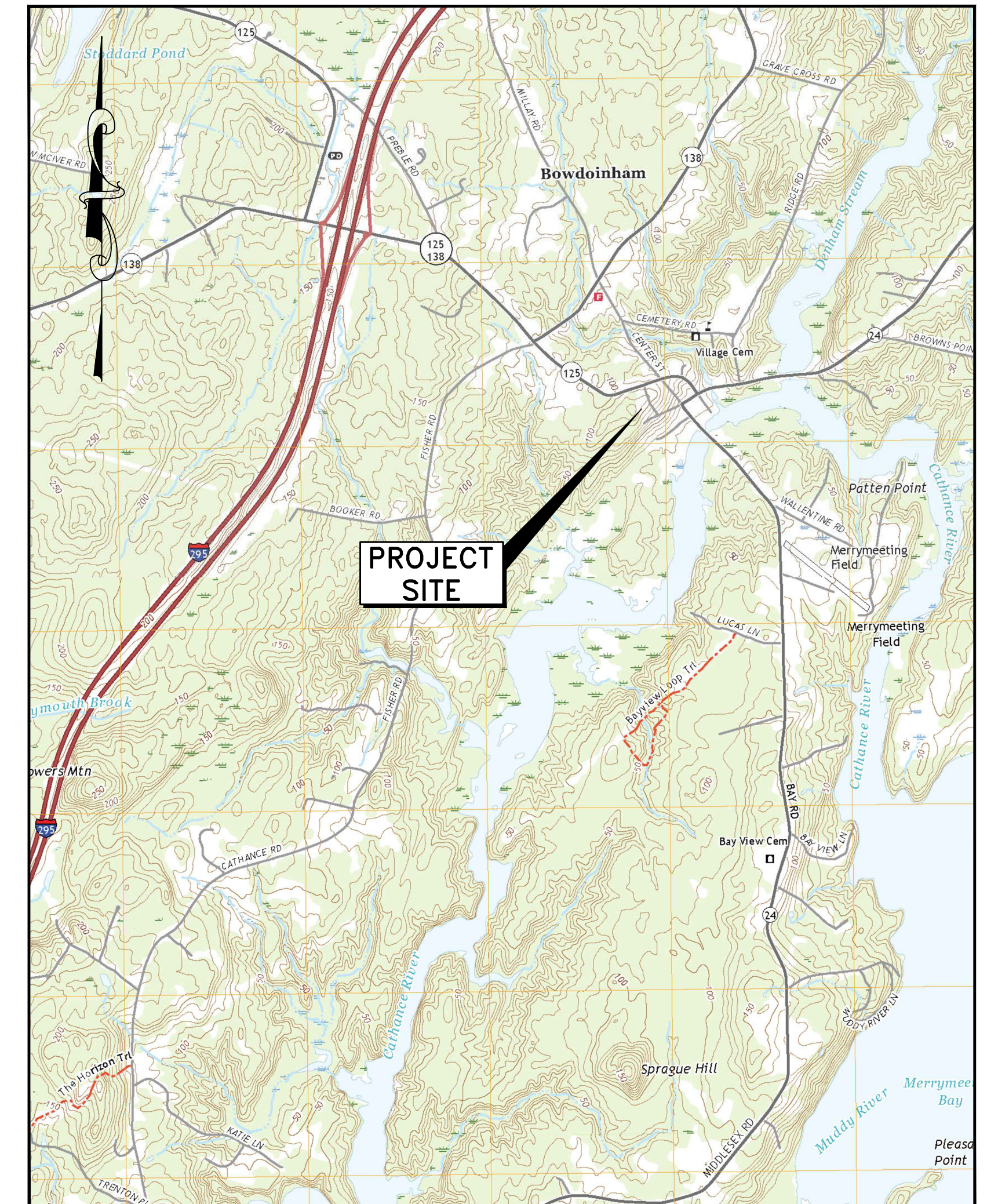
PINE TREE ENGINEERING, INC.
53 Front Street
Bath, Maine 04530



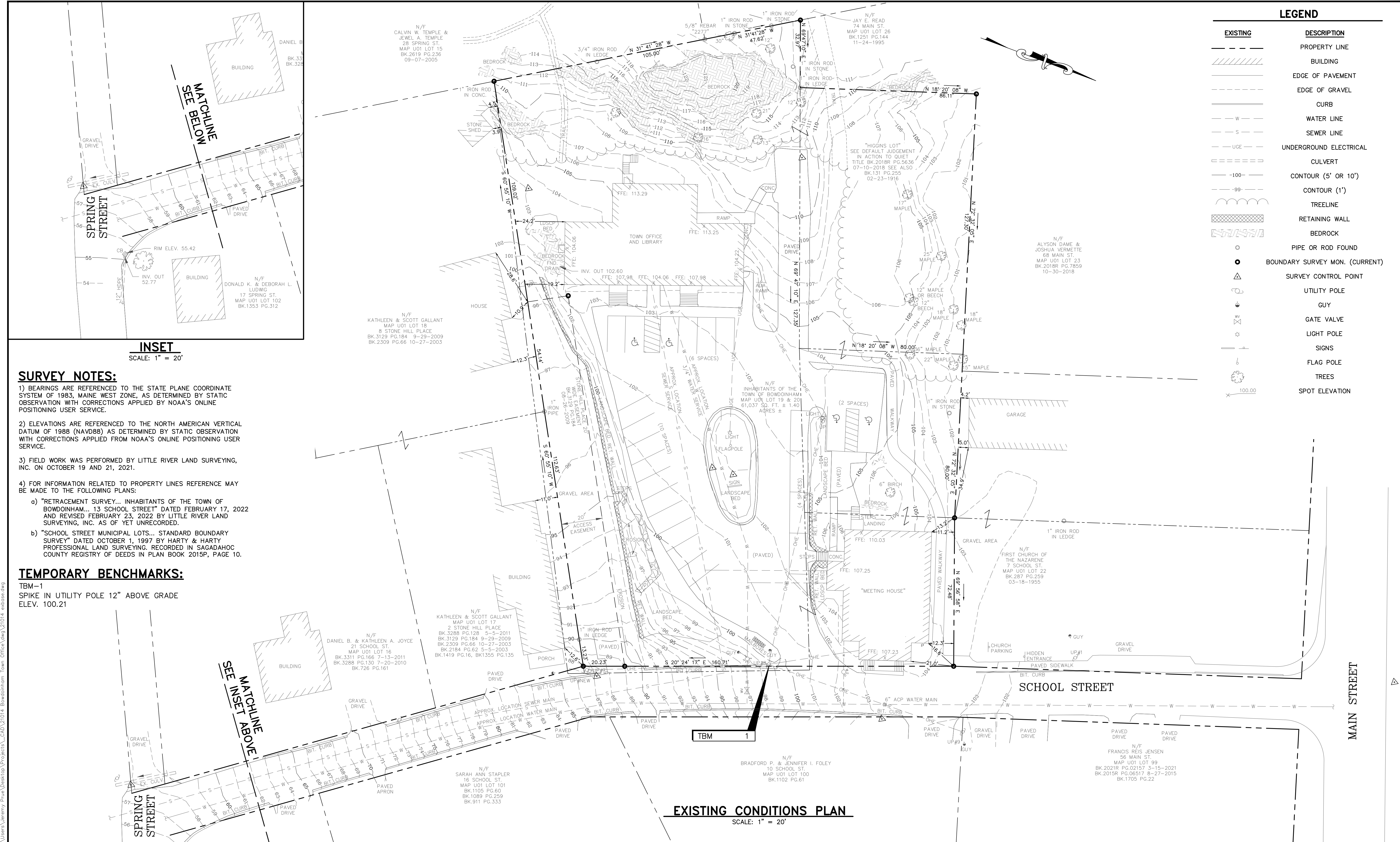
LOCATION MAP
SCALE: 1"=33± MILES

DRAWING INDEX

- 1 COVER
- 2 EXISTING CONDITIONS PLAN
- 3 PROPOSED SITE PLAN AND DETAILS
- 4 PROPOSED GRADING PLAN



AREA MAP
SCALE: 1"=2000±



LEGEND	
EXISTING	DESCRIPTION
---	PROPERTY LINE
▨	BUILDING
---	EDGE OF PAVEMENT
---	EDGE OF GRAVEL
---	CURB
---	WATER LINE
---	SEWER LINE
---	UNDERGROUND ELECTRICAL
---	CULVERT
---	CONTOUR (5' OR 10')
---	CONTOUR (1')
---	TREELINE
---	RETAINING WALL
---	BEDROCK
○	PIPE OR ROD FOUND
●	BOUNDARY SURVEY MON. (CURRENT)
△	SURVEY CONTROL POINT
○	UTILITY POLE
○	GUY
○	GATE VALVE
○	LIGHT POLE
○	SIGNS
○	FLAG POLE
○	TREES
○	SPOT ELEVATION

SURVEY NOTES:

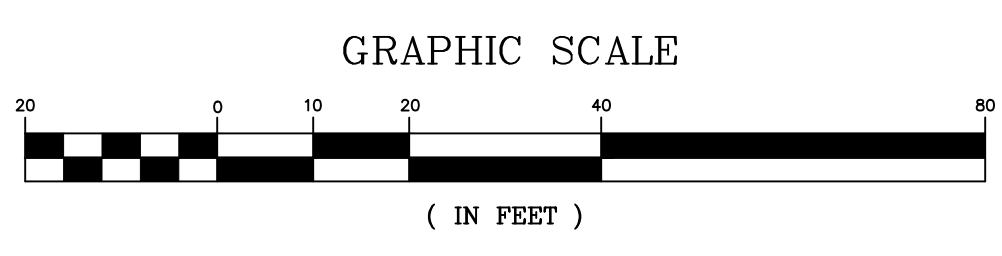
- BEARINGS ARE REFERENCED TO THE STATE PLANE COORDINATE SYSTEM OF 1983, MAINE WEST ZONE, AS DETERMINED BY STATIC OBSERVATION WITH CORRECTIONS APPLIED BY NOAA'S ONLINE POSITIONING USER SERVICE.
- ELEVATIONS ARE REFERENCED TO THE NORTH AMERICAN VERTICAL DATUM OF 1988 (NAVD88) AS DETERMINED BY STATIC OBSERVATION WITH CORRECTIONS APPLIED FROM NOAA'S ONLINE POSITIONING USER SERVICE.
- FIELD WORK WAS PERFORMED BY LITTLE RIVER LAND SURVEYING, INC. ON OCTOBER 19 AND 21, 2021.
- FOR INFORMATION RELATED TO PROPERTY LINES REFERENCE MAY BE MADE TO THE FOLLOWING PLANS:
 - "RETRACEMENT SURVEY... INHABITANTS OF THE TOWN OF BOWDOINHAM... 13 SCHOOL STREET" DATED FEBRUARY 17, 2022 AND REVISED FEBRUARY 23, 2022 BY LITTLE RIVER LAND SURVEYING, INC. AS OF YET UNRECORDED.
 - "SCHOOL STREET MUNICIPAL LOTS... STANDARD BOUNDARY SURVEY" DATED OCTOBER 1, 1997 BY HARTY & HARTY PROFESSIONAL LAND SURVEYING, RECORDED IN SAGADAHOC COUNTY REGISTRY OF DEEDS IN PLAN BOOK 2015P, PAGE 10.

TEMPORARY BENCHMARKS:

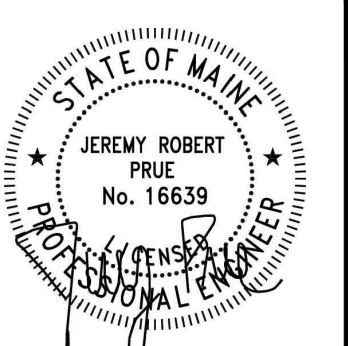
TBM-1
SPIKE IN UTILITY POLE 12" ABOVE GRADE
ELEV. 100.21

INSET
SCALE: 1" = 20'

EXISTING CONDITIONS PLAN
SCALE: 1" = 20'



REV	DATE	STATUS	BY	CHKD	APPD
1	11/7/22	REVISED P.B. SUBMITTAL	DB	RLP	JRP
0	10/17/22	SUBMITTAL FOR P.B. APPLICATION	JRP	RLP	JRP



DESIGNED BY: JRP
DRAWN BY: JRP/DB
CHECKED BY: RLP
APPROVED BY: JRP
DATE: 10/17/2022

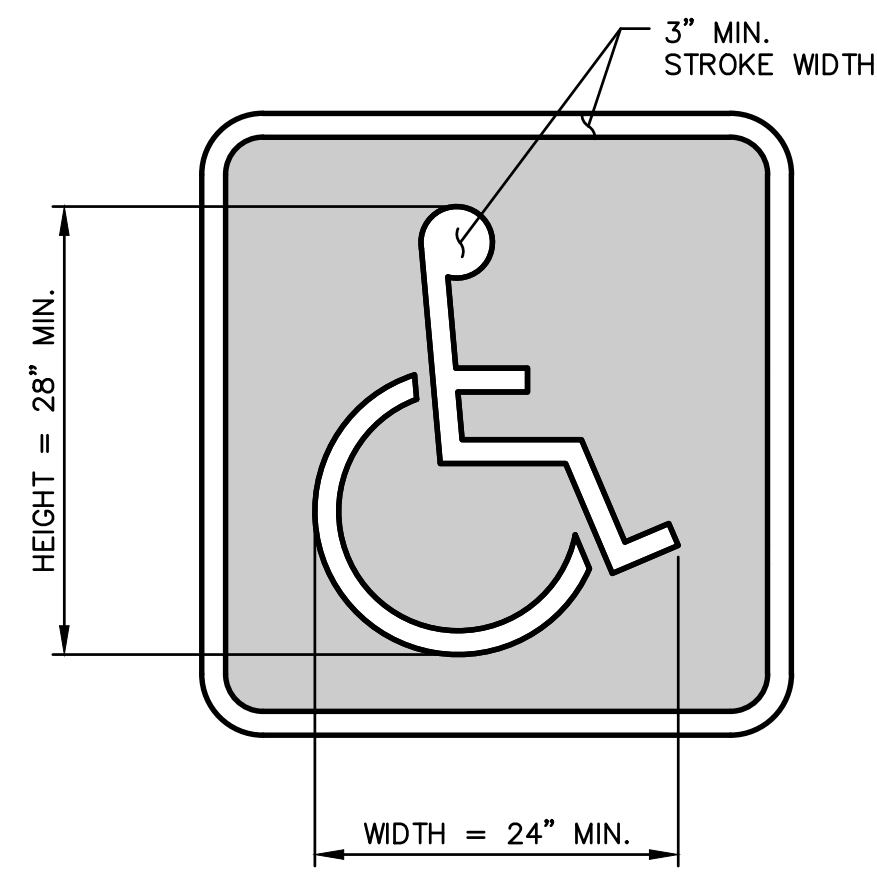
Pine Tree Engineering
Civil/Environmental Engineering + Surveying
53 Front Street
Bath, Maine 04530
Tel: (207) 443-1508
Fax: (207) 442-7029

CLIENT
TOWN OF BOWDOINHAM
13 SCHOOL STREET
BOWDOINHAM, MAINE 04008

PROJECT
TOWN OFFICE PARKING EXPANSION
TITLE
EXISTING CONDITIONS PLAN

SCALE	AS SHOWN
PROJECT NO.	21014
DRAWING NO.	21014 exbase
SHT.	2 of 4
REV.	1

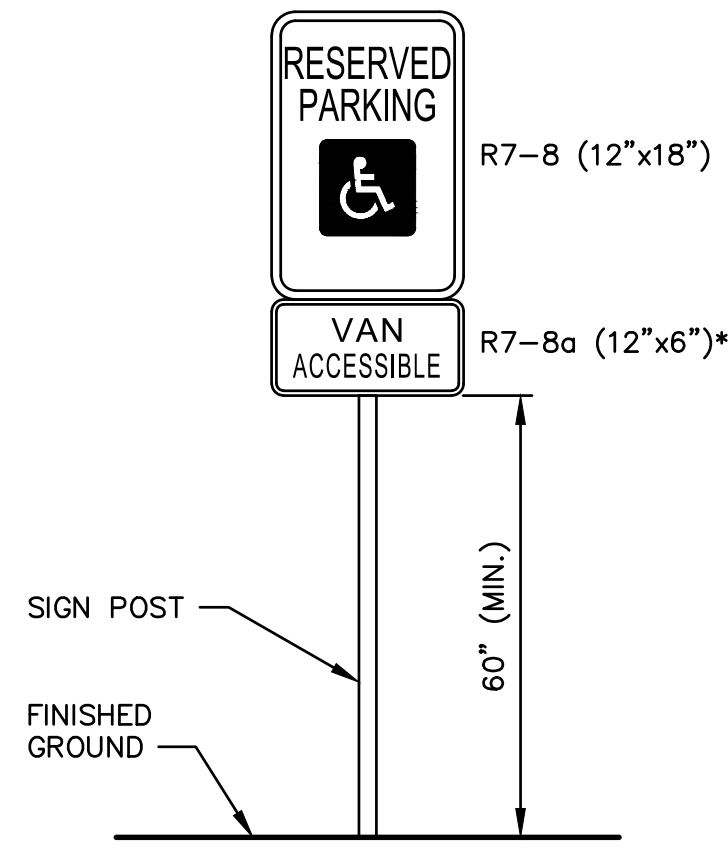
C:\Users\Jeremy Prue\Desktop\Projects\CAD\21014_Bowdoinham_Town_Office.dwg\21014_exbase.dwg 11/07/22 4:39pm



NOTE:
BLUE BACKGROUND REQUIRED AND
WHITE BORDER IS OPTIONAL.

ACCESSIBLE PARKING SPACE MARKING DETAIL

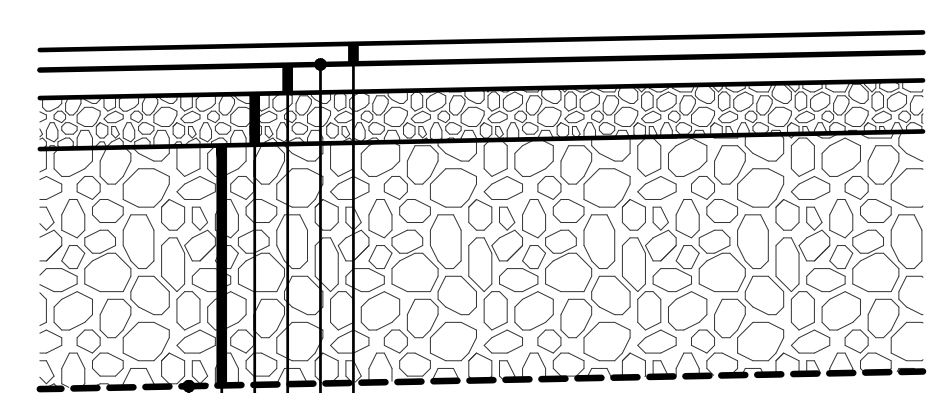
NOT TO SCALE



*ONLY TO BE USED FOR
VAN ACCESSIBLE SPACES

ACCESSIBLE PARKING SIGN DETAIL

NOT TO SCALE

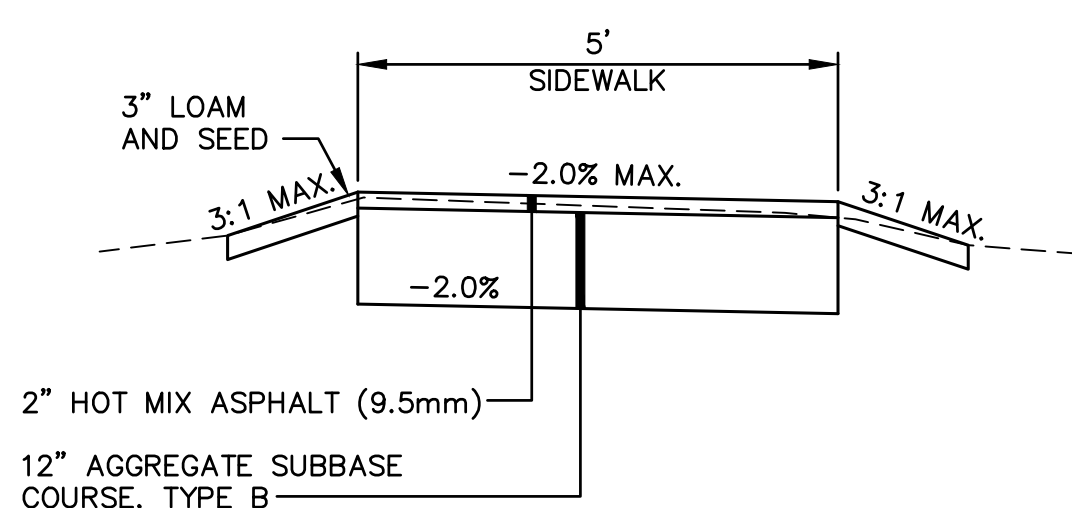


TYPICAL PAVEMENT MATERIAL

- 1 1/4" WEARING COURSE 9.5 mm HMA TACK COAT REQUIRED
- 2" BASE COURSE 19.0 mm HMA
- 6" AGGREGATE BASE COURSE (MAINEDOT TYPE A)
- 12" AGGREGATE SUBBASE COURSE (MAINEDOT TYPE D)
- SUBGRADE STABILIZATION GEOTEXTILE FABRIC (MIRAFI HP370 OR APPROVED EQUAL)

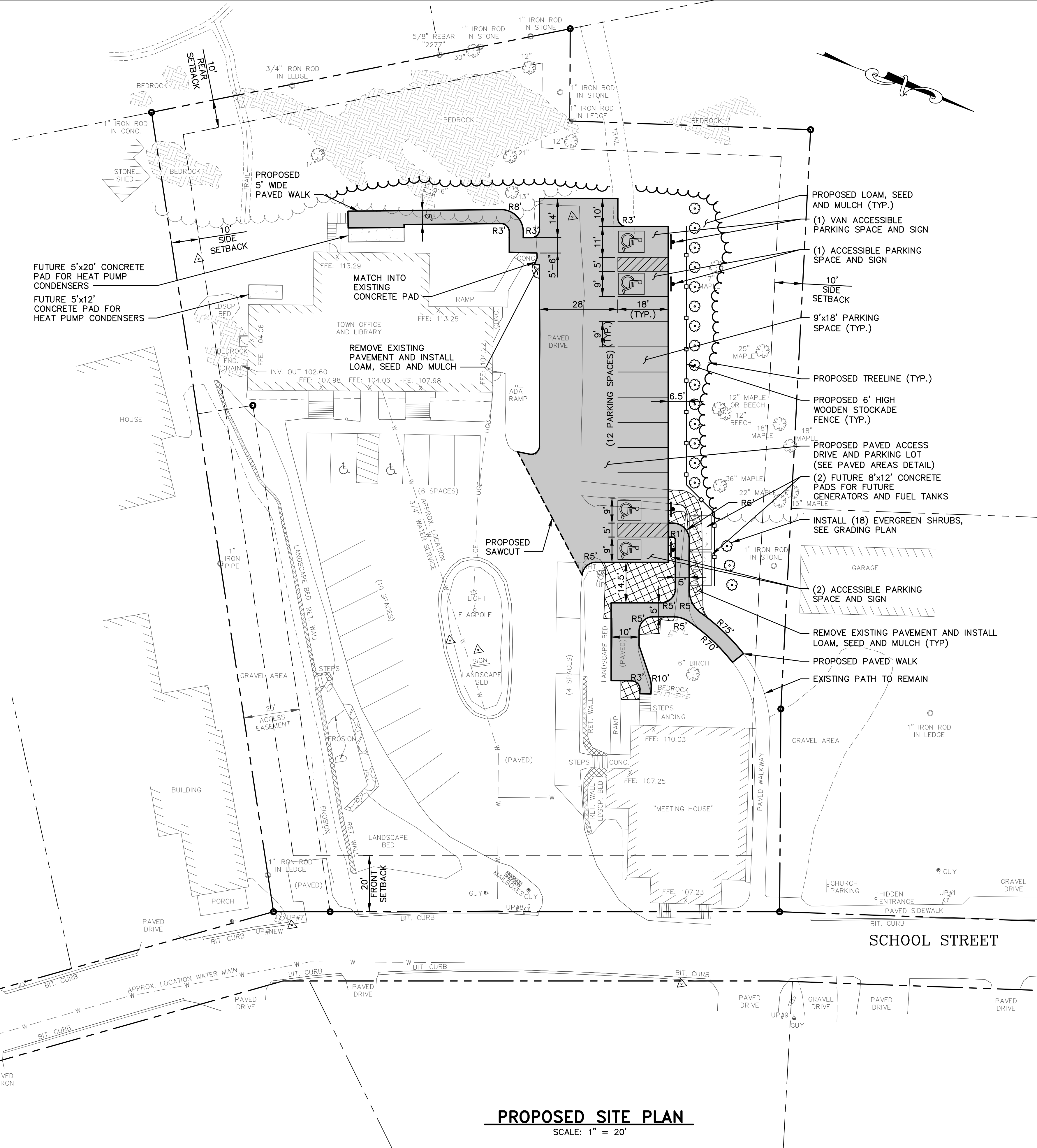
PAVED PARKING AREA

SCALE: 1" = 1'-0"



TYPICAL SIDEWALK SECTION

SCALE: 1" = 2'-0"

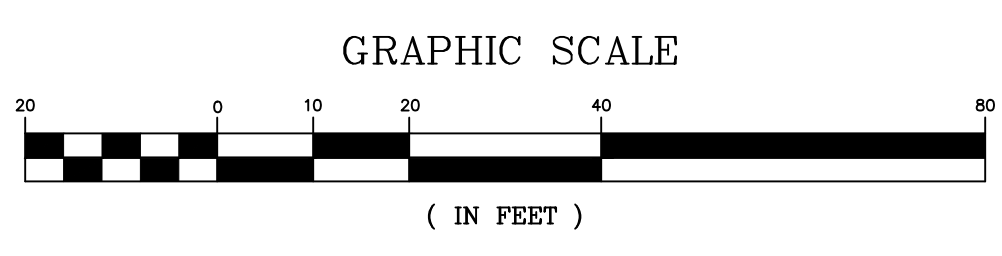


PROPOSED SITE PLAN

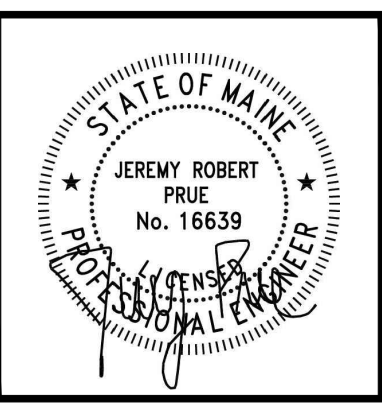
SCALE: 1" = 20'

LEGEND

EXISTING	DESCRIPTION	PROPOSED
---	PROPERTY LINE	---
---	SETBACK LINE	---
///	BUILDING	///
---	EDGE OF PAVEMENT	---
---	EDGE OF GRAVEL	---
---	CURB	---
---	TREELINE	---
---	FENCE	---
---	RETAINING WALL	---
---	BEDROCK	---
△	SURVEY CONTROL POINT	△
○	PIPE OR ROD FOUND	○
●	BOUNDARY SURVEY MON. (CURRENT)	●
○	UTILITY POLE	○
○	GUY	○
○	LIGHT POLE	○
○	SIGNS	○
○	FLAG POLE	○
○	TREES	○
○	SAWCUT	○
○	SHRUB	○



REV	DATE	STATUS	BY	CHKD	APPD
1	11/7/22	REVISED P.B. SUBMITTAL	DB	RLP	JRP
0	10/17/22	SUBMITTAL FOR P.B. APPLICATION	JRP	RLP	JRP



DESIGNED BY: JRP
 DRAWN BY: JRP/DB
 CHECKED BY: RLP
 APPROVED BY: JRP
 DATE: 10/17/2022

Pine Tree Engineering

53 Front Street
 Bath, Maine 04530
 Tel: (207) 443-1508
 Fax: (207) 442-7029

Civil/Environmental Engineering + Surveying

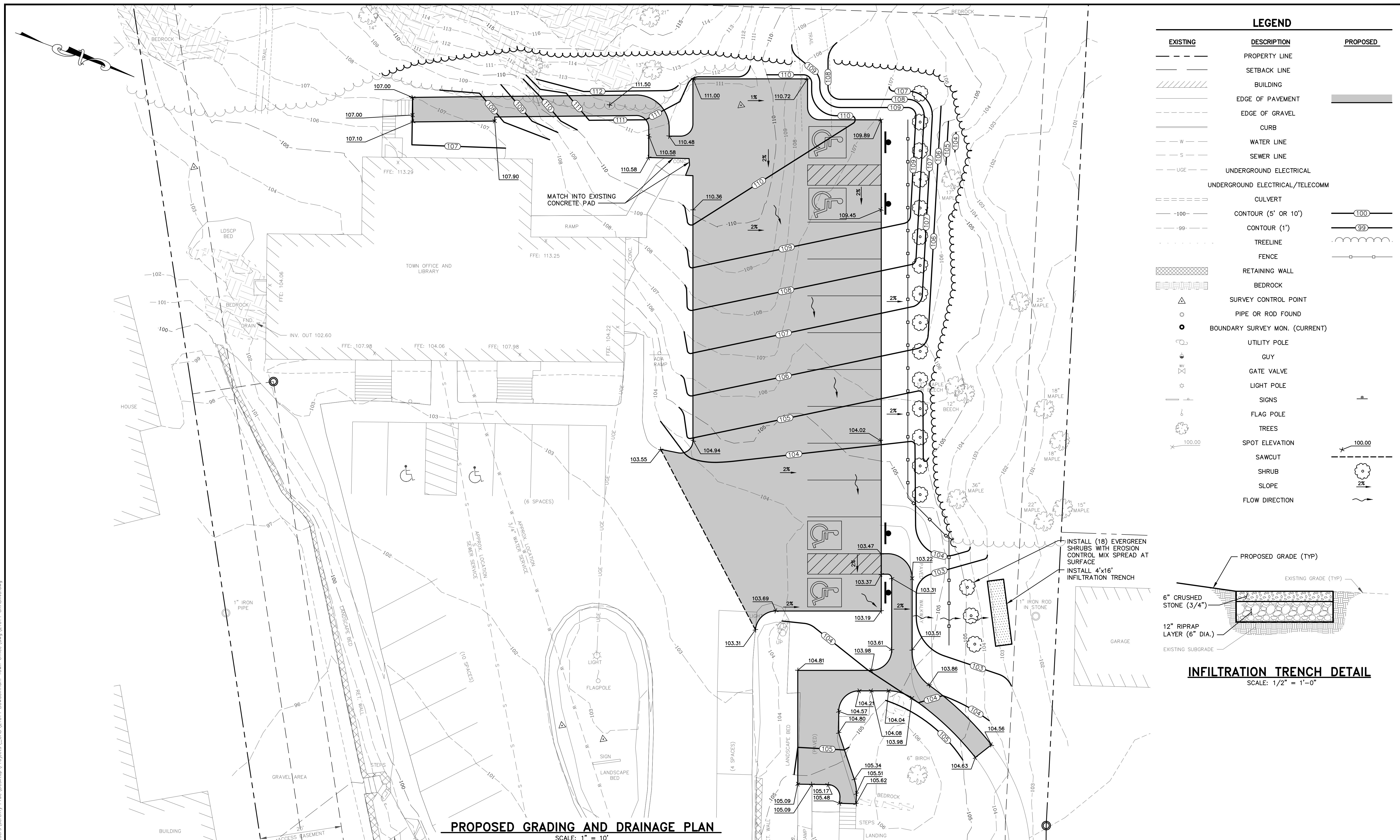
CLIENT
TOWN OF BOWDOINHAM
 13 SCHOOL STREET
 BOWDOINHAM, MAINE 04008

PROJECT
TOWN OFFICE PARKING EXPANSION

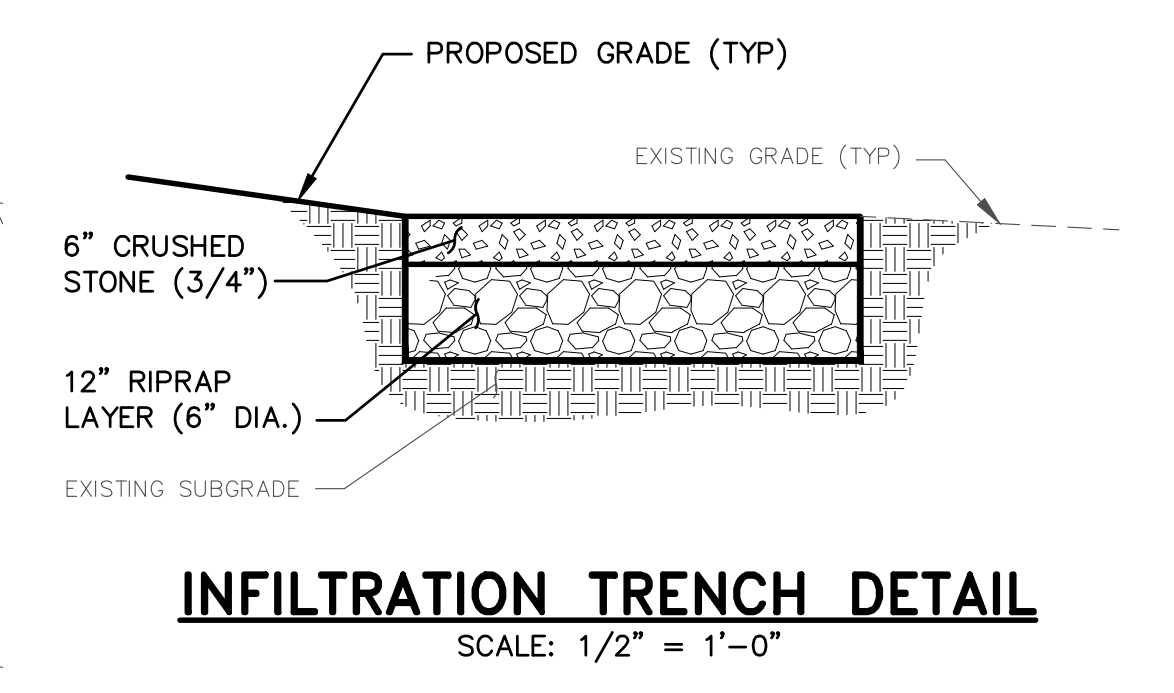
TITLE
PROPOSED SITE PLAN AND DETAILS

SCALE	AS SHOWN
PROJECT NO.	21014
DRAWING NO.	21014 site
SHT.	3 of 4
REV.	1

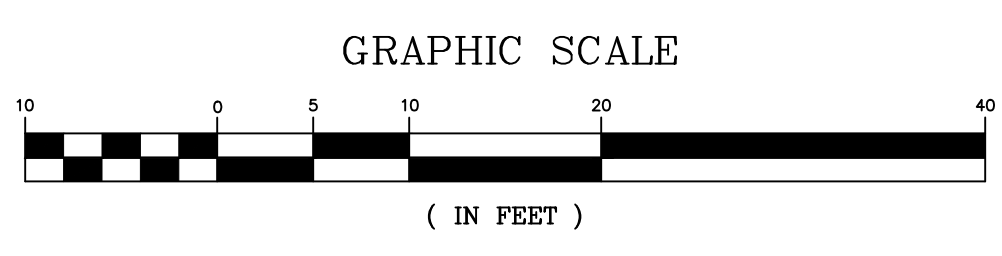
C:\Users\Jeremy Prue\Desktop\Projects\CAD\21014_Bowdoinham_Town_Office.dwg\21014_site.dwg 11/07/22 4:39pm



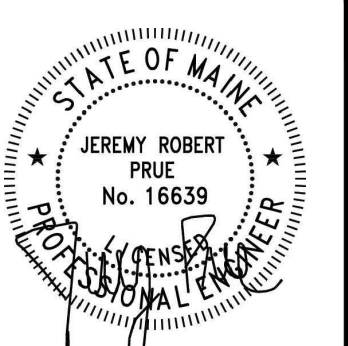
LEGEND		
EXISTING	DESCRIPTION	PROPOSED
- - - - -	PROPERTY LINE	
- - - - -	SETBACK LINE	
	BUILDING	
- - - - -	EDGE OF PAVEMENT	
- - - - -	EDGE OF GRAVEL	
- - - - -	CURB	
- W - - -	WATER LINE	
- S - - -	SEWER LINE	
- UGE - - -	UNDERGROUND ELECTRICAL	
- UGE - - -	UNDERGROUND ELECTRICAL/TELECOMM	
- - - - -	CULVERT	
-100-	CONTOUR (5' OR 10')	100
-99-	CONTOUR (1')	99
- - - - -	TREELINE	
- - - - -	FENCE	
	RETAINING WALL	
	BEDROCK	
△	SURVEY CONTROL POINT	
○	PIPE OR ROD FOUND	
●	BOUNDARY SURVEY MON. (CURRENT)	
○	UTILITY POLE	
○	GUY	
○	GATE VALVE	
○	LIGHT POLE	
○	SIGNS	
○	FLAG POLE	
○	TREES	
○	SPOT ELEVATION	100.00
- - - - -	SAWCUT	100.00
○	SHRUB	
○	SLOPE	2%
○	FLOW DIRECTION	



PROPOSED GRADING AND DRAINAGE PLAN
SCALE: 1" = 10'



REV	DATE	STATUS	BY	CHKD	APPD
1	11/7/22	REVISED P.B. SUBMITTAL	DB	RLP	JRP
0	10/17/22	SUBMITTAL FOR P.B. APPLICATION	JRP	RLP	JRP



DESIGNED BY: JRP
 DRAWN BY: JRP/DB
 CHECKED BY: RLP
 APPROVED BY: JRP
 DATE: 10/17/2022

Pine Tree Engineering
 53 Front Street
 Bath, Maine 04530
 Tel: (207) 443-1508
 Fax: (207) 442-7029
 Civil/Environmental Engineering • Surveying

CLIENT
TOWN OF BOWDOINHAM
 13 SCHOOL STREET
 BOWDOINHAM, MAINE 04008

PROJECT
TOWN OFFICE PARKING EXPANSION
 TITLE
PROPOSED GRADING PLAN

SCALE	AS SHOWN
PROJECT NO.	21014
DRAWING NO.	21014 GRADING
SHT.	4 of 4
REV.	1

C:\Users\Jeremy Prue\Desktop\Projects\CAD\21014_Bowdoinham Town Office.dwg 2/10/14 GRADING.dwg 11/07/22 4:39pm