




A Preferred Alternative:



Hand Carry Boat Launch and Shoreline Stabilization
Design Consolidations for the
Bowdoinham Public Works Redevelopment Masterplan

Richardson Associates, Baker Design Consultants, Town of Bowdoinham
11-20-2019

Meeting Agenda

Review Public Design Feedback from 9-17-2019

- Outcomes for Paddle Put in Preferences and Shoreline Stabilization Elements
- Project Contexts
- Hand Carry Launch - ADA and All Tides Float Design
 - * Plans and Sections
 - * Hand Carry Elements
- Shoreline Stabilization
 - * Areas of Stabilization Strategies
 - * General Planting Palette
 - * Sections and Character of Stabilization Strategies
- Project Next Steps

Design Public Hearing Review

First Public Hearing Held on 9-17-2019

- Community Consensus on ADA Paddle Put in as Preferred Design Option.
 - All tides accessible boat launch
 - Provide New and Numerous Kayak Racks for Community Use
 - Trailer Parking if Needed by General Parking Area, Car Access Close to Launch
- Shoreline Stabilization Should Use All Stabilization Strategies, but at Appropriate Locations.
 - Mud is Not Bad! Natural Processes of the River Will Happen, Mud Flats are Not a Negative for the Park; Safe and Functional Bank Structure Is Important.
 - Three Overlook / Interpretive "Pull Off" Areas (1 Bridge Overlook, 2 River Path Pull Off Points, Fishing Compatible)

Project Locations

Bowdoinham

Philip Maily Waterfront Park & Boat Launch

Public Works Redevelopment Site

Maine Central R.R.

Hand-carry boat launch and living shoreline stabilization Areas

River Road

Cathance River



Maily Waterfront Park Boat launch



Existing Unstable Shore line and debris



Existing Shoreline with less impacts



Masterplan

KEY

- | | | |
|---|---|--|
| 1 Pedestrian Connection to Molly Park
<i>Improved Access</i> | 7 Pavilion
<i>80' x 20' Post and Beam Pavilion</i> | 11 Rail Trail Access
<i>Signage / Kiosk</i> |
| 2 Park Entry Signage | 8 Active Recreation
<i>Wolleyball, Bocce, Horseshoe Courts</i> | 12 Future Rail Trail Connector
<i>TRD</i> |
| 3 Passive Lawn Space
<i>Flexible Area</i> | 9 Nature Play
<i>Area for Playspace</i> | 13 Main Paths
<i>Improved Pedestrian Paths</i> |
| 4 Flexible Parking
<i>Group Seating and Parking Spaces</i> | 10 Kiosk Booths
<i>Parking Spaces</i> | 14 Boardwalk with Observation Deck
<i>Accessibility</i> |
| 5 Path / Circulation | 11 Road Carry Boat Launch
<i>Access and Storage</i> | 15 Observation Deck |

Masterplan Background

OVERALL CONCEPT PLAN



Phase 1 Recommendations

- General Site Restoration
- **Minimal Shore Stabilization**
- Limited Trails
- **Hand Carry Boat Launch, Parking, and Storage Racks**
- Picnic Area
- Car & Boat Trailer Parking
- Access Road
- Signage
- Crosswalk / Safety
- Landscape Planting
- Connections to Rail Trail.



KEY

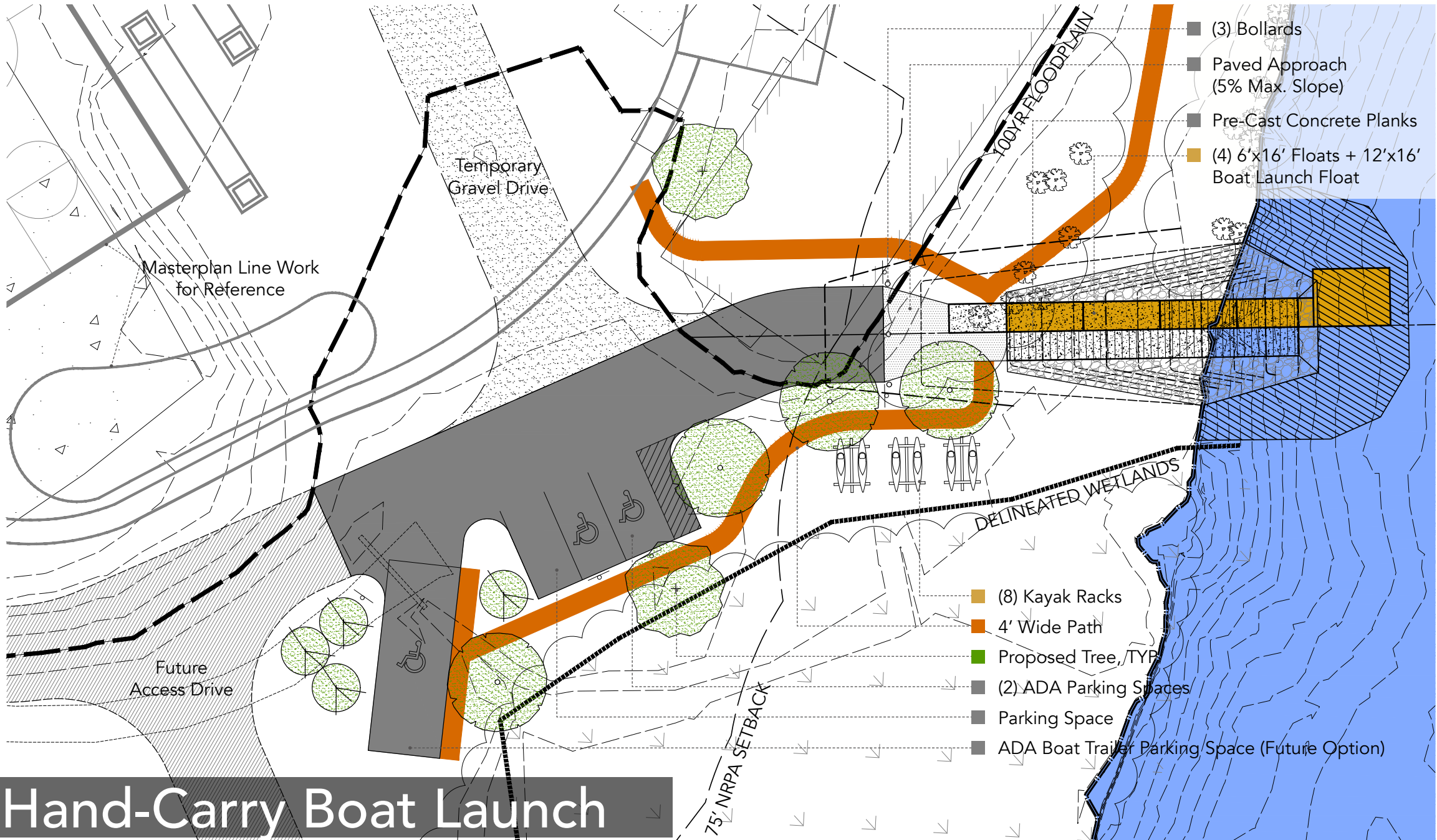
- | | | |
|--|--|---|
| 1 Pedestrian Connection to Molly Park
Improved Access | 2 Pavilion
80' x 20' Post and Beam Pavilion | 11 Rail Trail Access
Signage / Kiosk |
| 3 Park Entry Signage | 8 Active Recreation
Tennisball, Bocce, Horseshoe Courts | 12 Future Rail Trail Connector
TRD |
| 7 Passive Lawn Space
Flexible Area | 9 Nature Play
Area for Playspace | 13 Main Paths
Improved Pedestrian Paths |
| 4 Flexible Parking
Cruel Seats and Parking Spaces | 10 Kiosk Booths
Parking Spaces | 14 Boardwalk with Observation Deck
Accessibility |
| 5 Path / Circulation | 15 Hand Carry Boat Launch
Access and Storage | 15 Observation Deck |



Existing

Conditions





- (3) Bollards
- Paved Approach (5% Max. Slope)
- Pre-Cast Concrete Planks
- (4) 6'x16' Floats + 12'x16' Boat Launch Float

- (8) Kayak Racks
- 4' Wide Path
- Proposed Tree, /TYP
- (2) ADA Parking Spaces
- Parking Space
- ADA Boat Trailer Parking Space (Future Option)

Hand-Carry Boat Launch

Masterplan Line Work for Reference

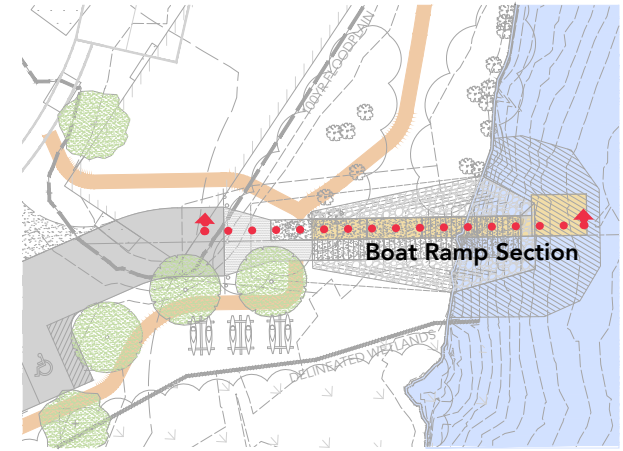
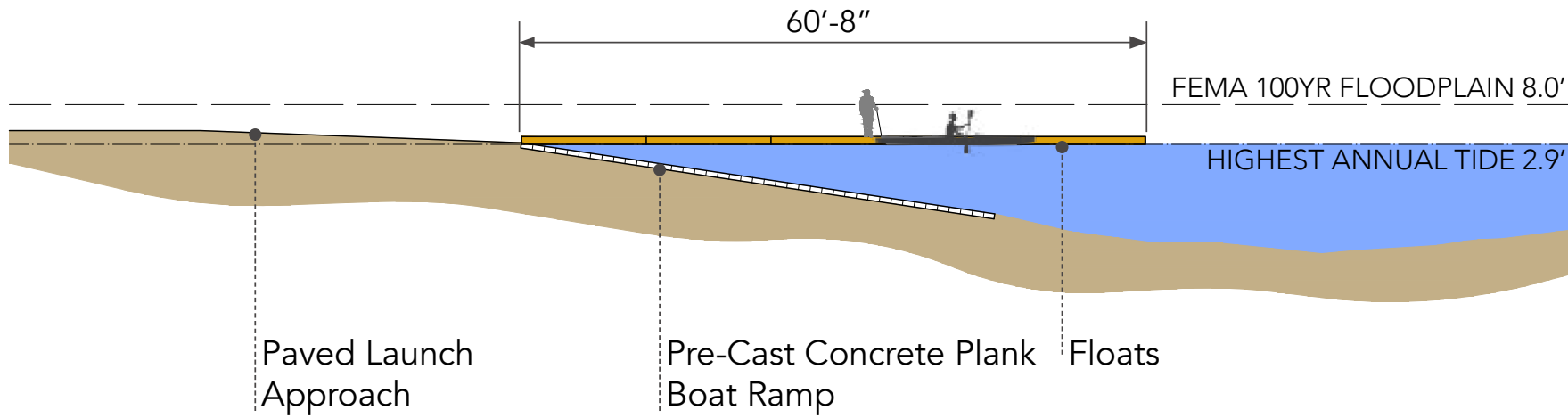
Temporary Gravel Drive

Future Access Drive

100YR FLOODPLAIN

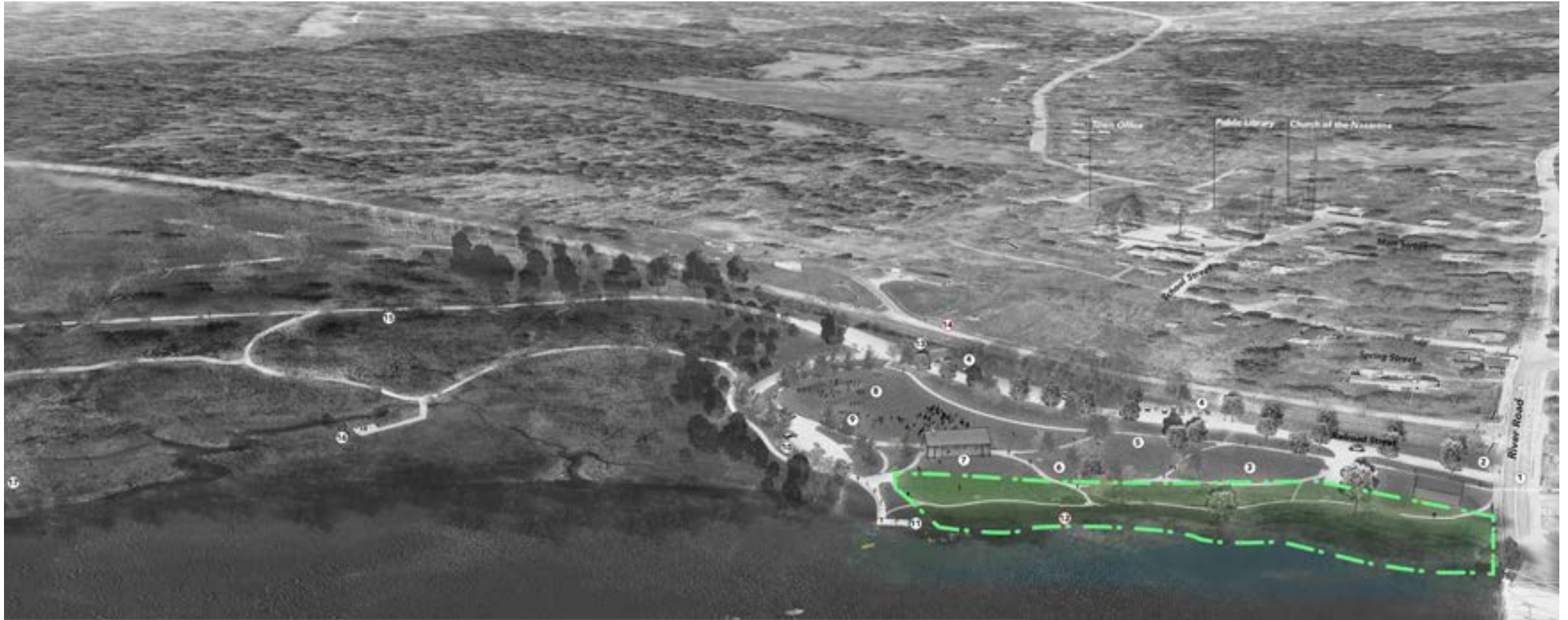
75' NRPA SETBACK

DELINEATED WETLANDS



Accessible Launch Section





Shoreline Restoration and Shoreline Trail

KEY

- | | | |
|---|---|--|
| 1 Pedestrian Connection to Molly Park
<i>Improved Access</i> | 2 Pavilion
<i>80' x 20' Post and Beam Pavilion</i> | 11 Rail Trail Access
<i>Signage / Kiosk</i> |
| 3 Park Entry Signage | 8 Active Recreation
<i>Wolleyball, Bocce, Horseshoe Courts</i> | 12 Future Rail Trail Connector
<i>TRC</i> |
| 7 Paved Loop Space
<i>Flexible Area</i> | 9 Nature Play
<i>Area for Playspace</i> | 13 Main Paths
<i>Improved Pedestrian Paths</i> |
| 4 Flexible Parking
<i>Group Seats and Parking Spaces</i> | 10 Kiosk Booths
<i>Parking Spaces</i> | 14 Boardwalk with Observation Deck
<i>Accessibility</i> |
| 5 Path / Circulation | 11 Road Carry Boat Launch
<i>Access and Storage</i> | 15 Observation Deck |

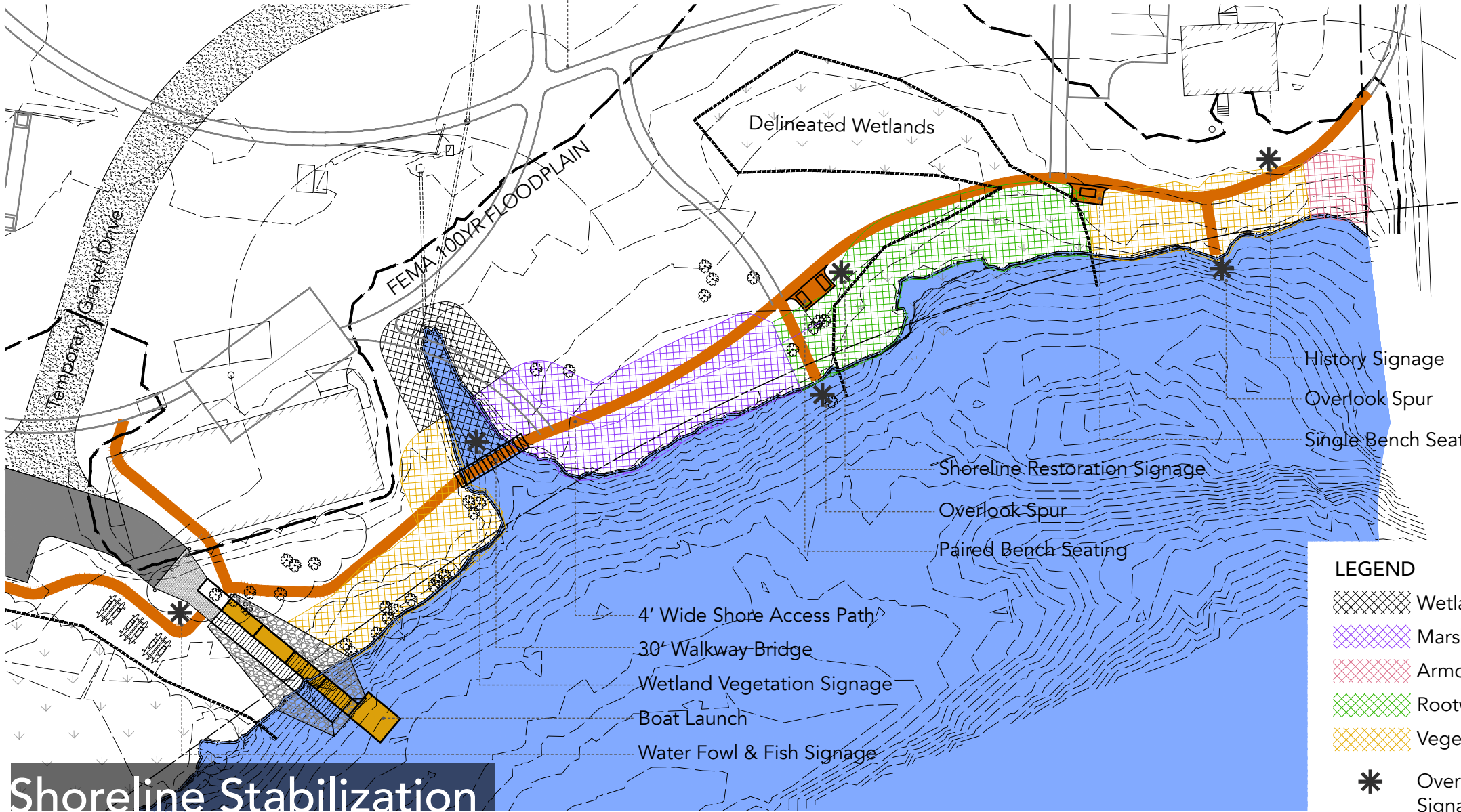


Existing

Conditions



Masterplan Line Work for Reference



History Signage
Overlook Spur
Single Bench Seating

Shoreline Restoration Signage
Overlook Spur
Paired Bench Seating

4' Wide Shore Access Path
30' Walkway Bridge
Wetland Vegetation Signage
Boat Launch
Water Fowl & Fish Signage

LEGEND

- Wetland Garden
- Marsh Restoration
- Armored Slope
- Rootwad Stabilization
- Vegetated Retaining Wall
- Overlook Terminus/Signage Locations

Shoreline Stabilization

Shoreline Trail Amenities

Shoreline Trail Landscape Architectural Elements

- Seating
(Benches: backless or backed, materials, setting locale)
- Interpretive Signage
(Materials, Locations, Themes)
- Pedestrian Pathway Bridge
(Type of Material, Construction Approach, Character)

General Design Principles:

- Affordable
- Aesthetic
- Ease of Maintenance and Durability





Seating



Backed - Wood



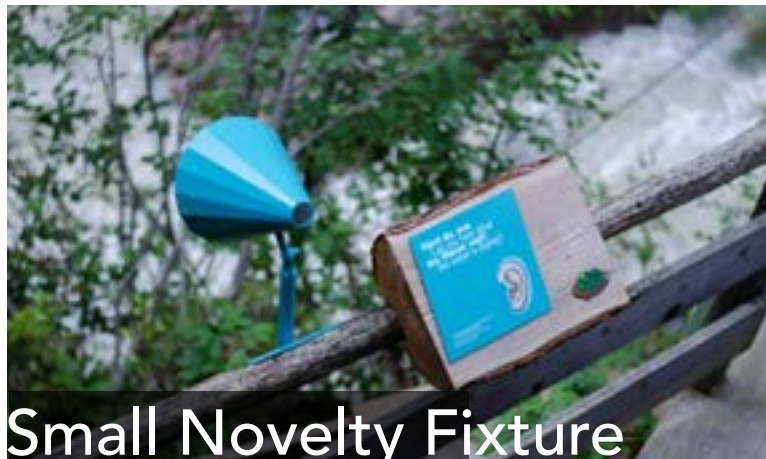
Backless - Wood or Composite



Backless - Wood



Interpretive Signage



Small Novelty Fixture



Large Site Sign



Structure Attached



Bridge Structure



Rustic - Wood, simple \$



High Span - Steel, simple \$\$



Engineered - High Span \$\$\$\$

Plant Design Principles

Planting Principles for planting selections:

- Shoreline Stabilization Capability
(rooting structure and growth characteristics)
- Beauty and Aesthetic Values
(Seasonal qualities, flowering, texture, form)
- Regionally Appropriate and Native Materials
(Planting Responds to Merry Meeting Bay plant communities and native Maine plants)
- Wildlife Benefits
(Food, cover, nesting, behavioral needs)
- Maintenance and Masterplan Compatibility
(Maintenance needs and park design intentions)
*Plants with a * by their name indicate species recommended by Maine Natural Areas Program





Upland Plant Community Elements



Trees



Shrubs



Perennials



Red maple*
Acer rubrum

Yellow birch
Betula alleghaniensis

Speckled alder*
Alnus incana

Shadblow serviceberry
Amelanchier canadensis

Common witchhazel*
Hamamelis virginiana

Arrowwood viburnum
Viburnum dentatum

Huckleberry
Gaylussacia baccata

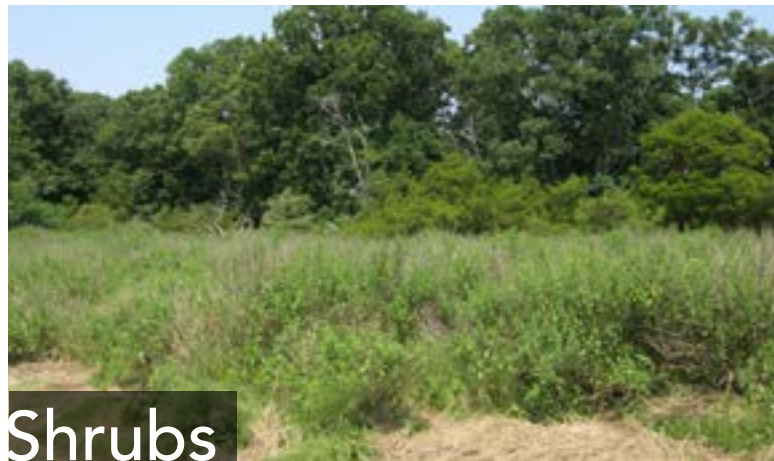
Highbush blueberry
Vaccinium corymbosum

Hay-scented fern
Dennstaedtia punctilobula

Sweetfern*
Comptonia peregrina

Bluejoint*
Calamagrostis canadensis

Broadleaf meadowsweet*
Spiraea latifolia





Trees



Shrubs



Perennials

Black willow*
Salix nigra

Red maple*
Acer rubrum

Speckled alder*
Alnus incana

Gray birch
Betula populifolia

Silky dogwood*
Cornus amomum

Sweet gale
myrica gale

Sheeps Laurel
Kalmia angustifolia

Winterberry
Ilex verticillata

Bluejoint
Calamagrostis canadensis

Lowbush blueberry
Vaccinium angustifolium

Goldenrod
Solidago canadensis

Sweet-scented joe-pye-weed
Eutrochium purpureum



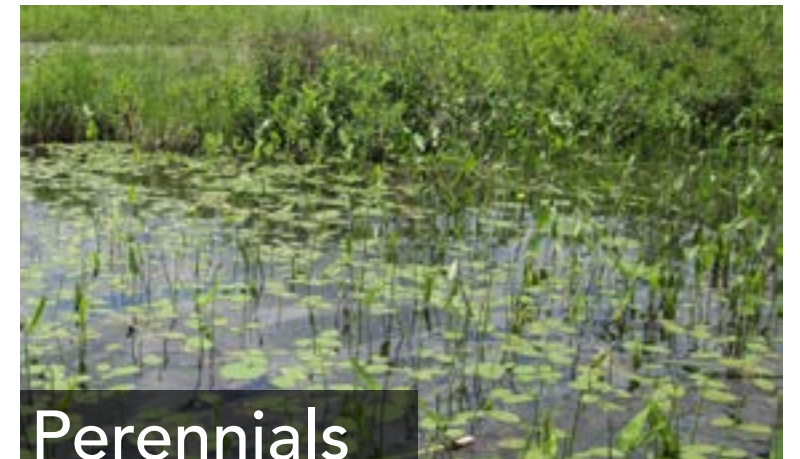
Intertidal Zone



Grasses



Feature Perennials



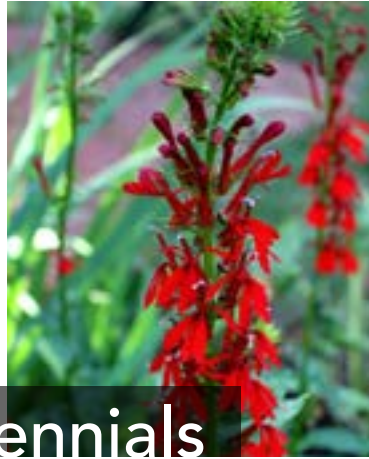
Perennials



Grasses



Feature Perennials



Perennials

Softstem bulrush*
Schoenoplectus tabernaemontani

Chair-maker's rush
Scirpus americanus

Bluejoint
Calamagrostis canadensis

Northern Wild Rice*
Zizania palustris (where
appropriate)

Pickernelweed*
Pontederia cordata

Cardinal flower
Lobelia cardinalis

Blue iris
Iris versicolor

Yellow pond-lily
Nuphar lutea

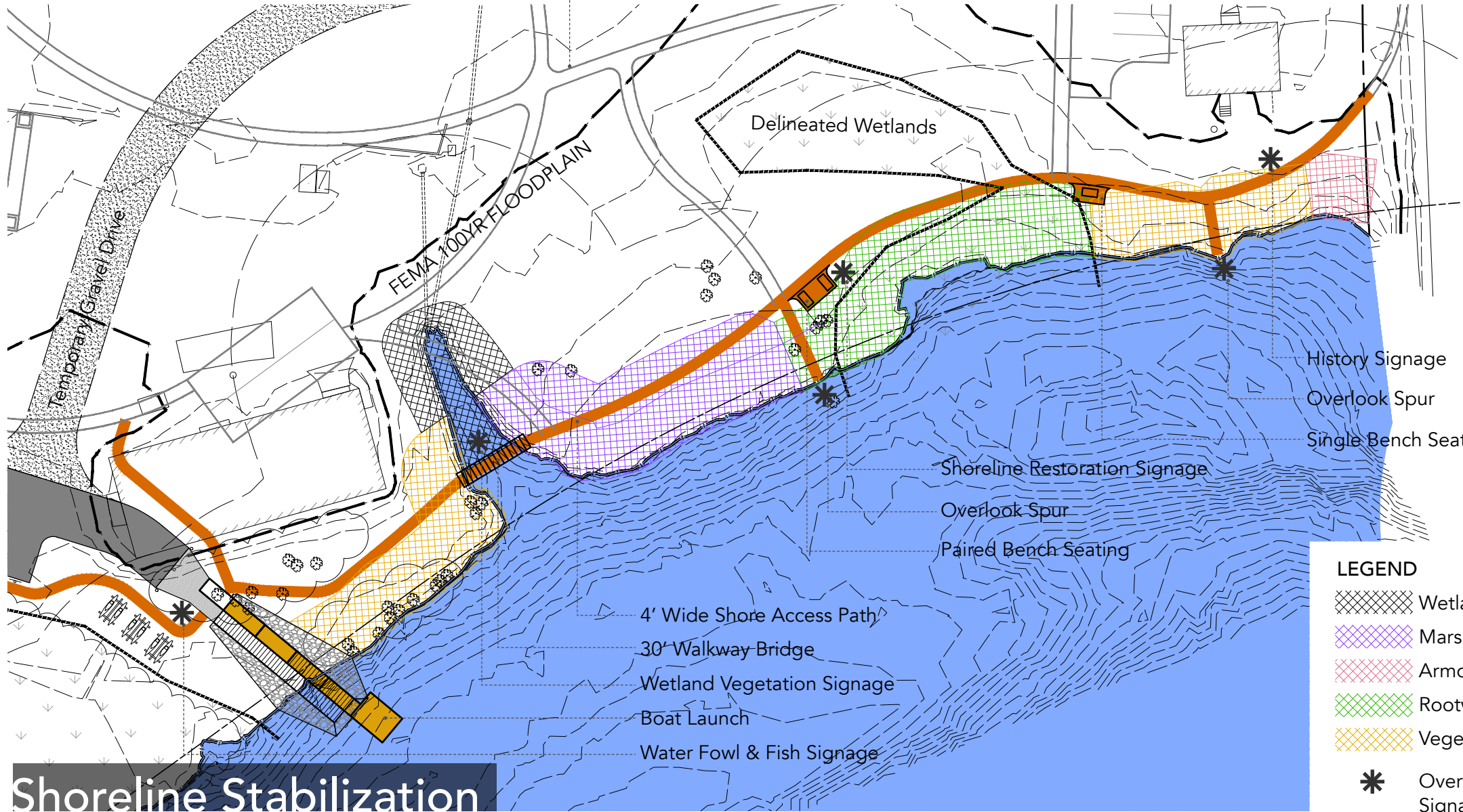
Common Arrowhead*
Sagittaria latifolia

Parker's pipewort
Eriocaulon parkeri

Nodding beggartick
Bidens cernua

Northern Water plantain*
Alisma triviale

Masterplan Line Work for Reference



History Signage
Overlook Spur
Single Bench Seating

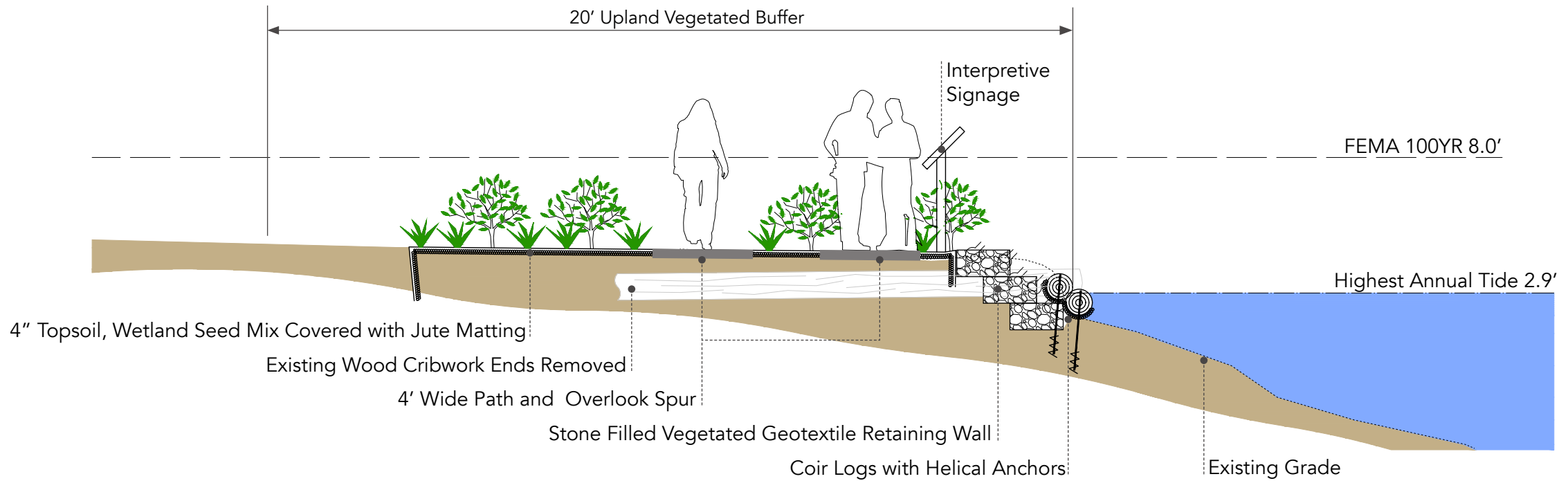
Shoreline Restoration Signage
Overlook Spur
Paired Bench Seating

4' Wide Shore Access Path
30' Walkway Bridge
Wetland Vegetation Signage
Boat Launch
Water Fowl & Fish Signage

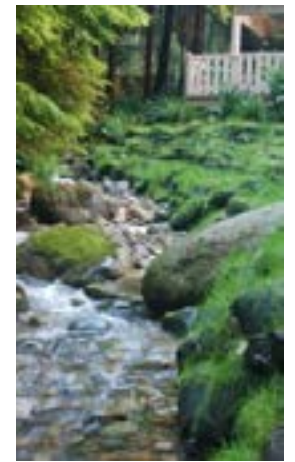
LEGEND

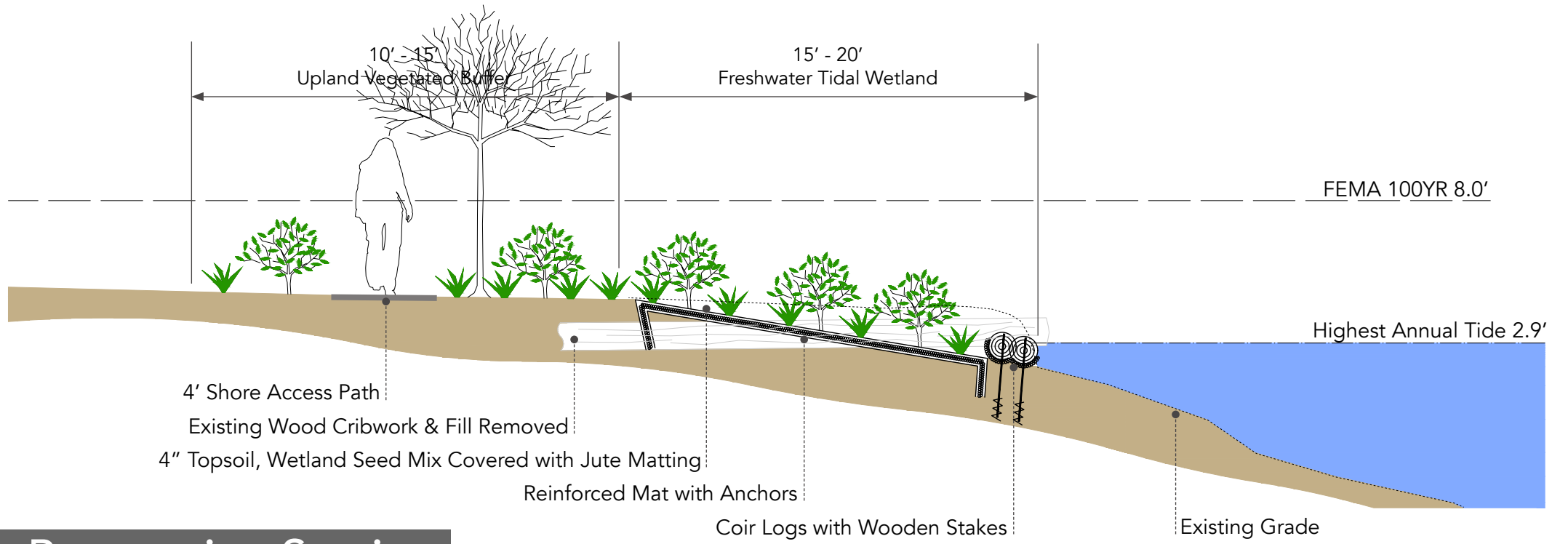
- Wetland Garden
- Marsh Restoration
- Armored Slope
- Rootwad Stabilization
- Vegetated Retaining Wall
- Overlook Terminus/
Signage Locations

Shoreline Stabilization



Vegetated Retaining Wall Section

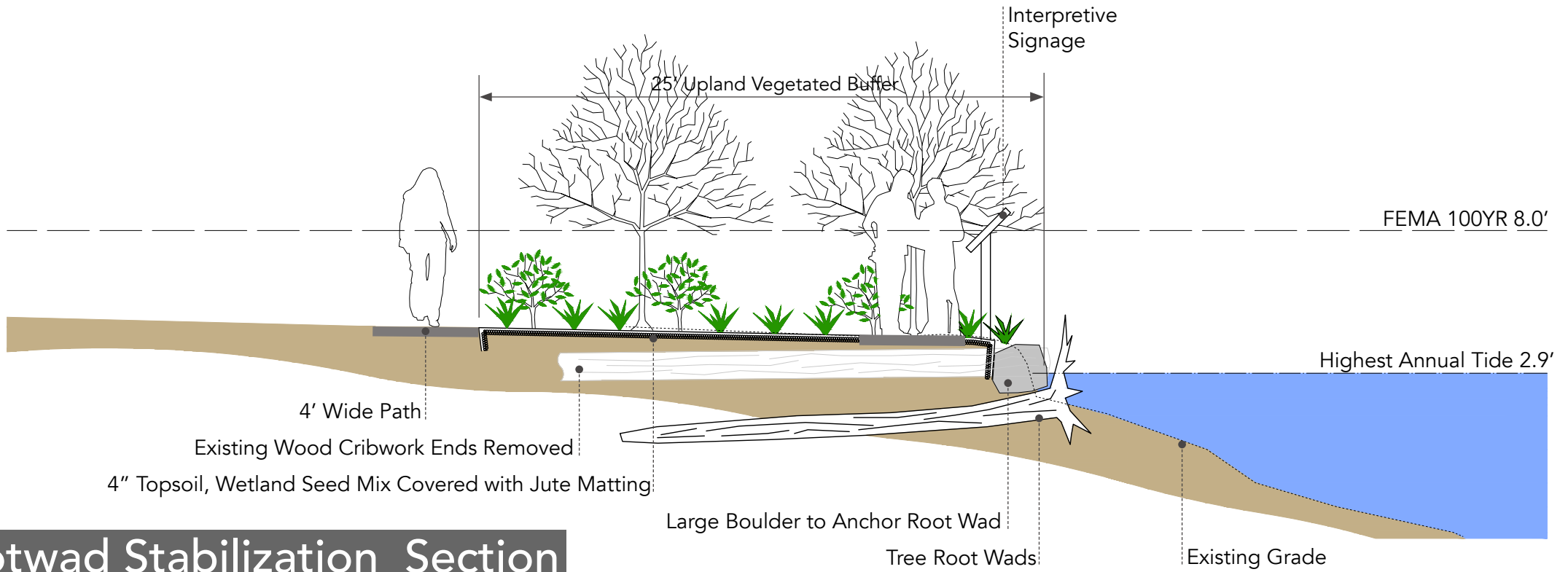




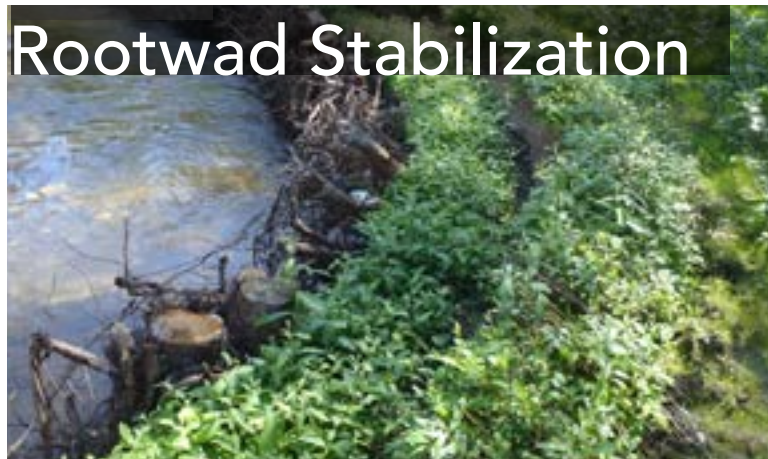
Marsh Restoration Section

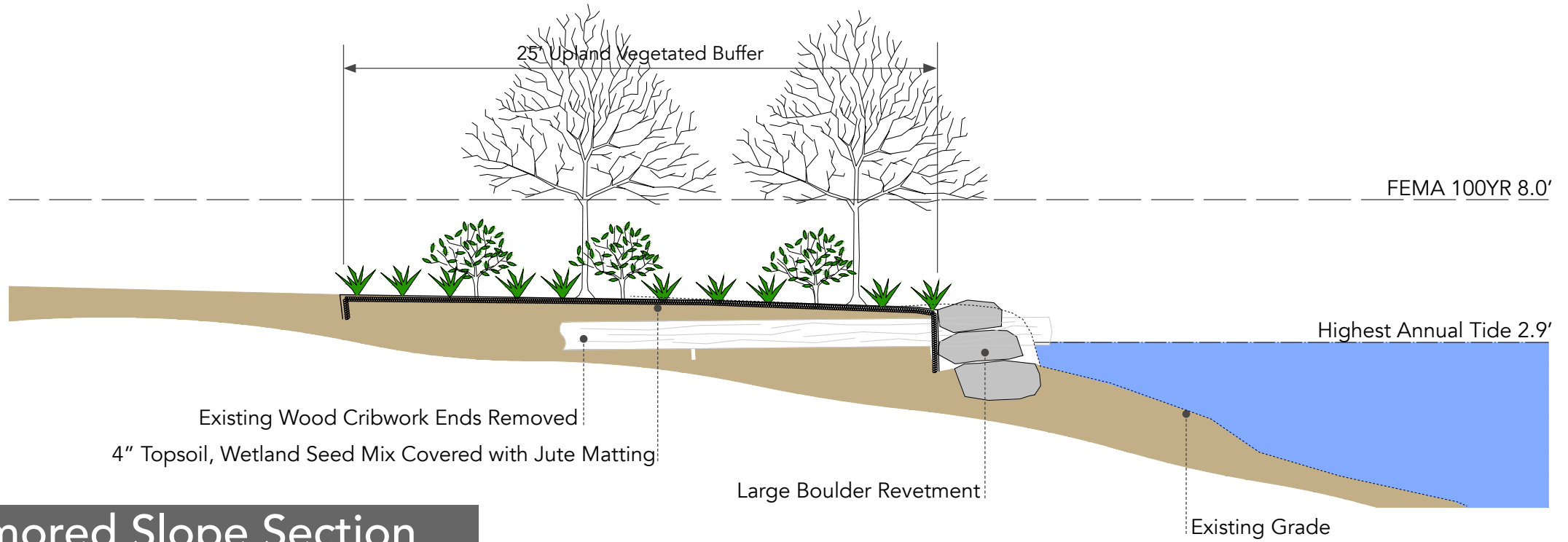
Marsh Restoration





Rootwad Stabilization Section





Armored Slope Section



Next Steps

Schedule Review* if Funding Becomes Available

- Design Development on Preferred Options Winter 2019
- Permitting Winter 2019 / Early Spring 2020
- Construction Documents Winter 2019 / Early Spring 2020
- Bidding Late Spring 2020 / Early Summer 2020
- Construction Late Summer 2020