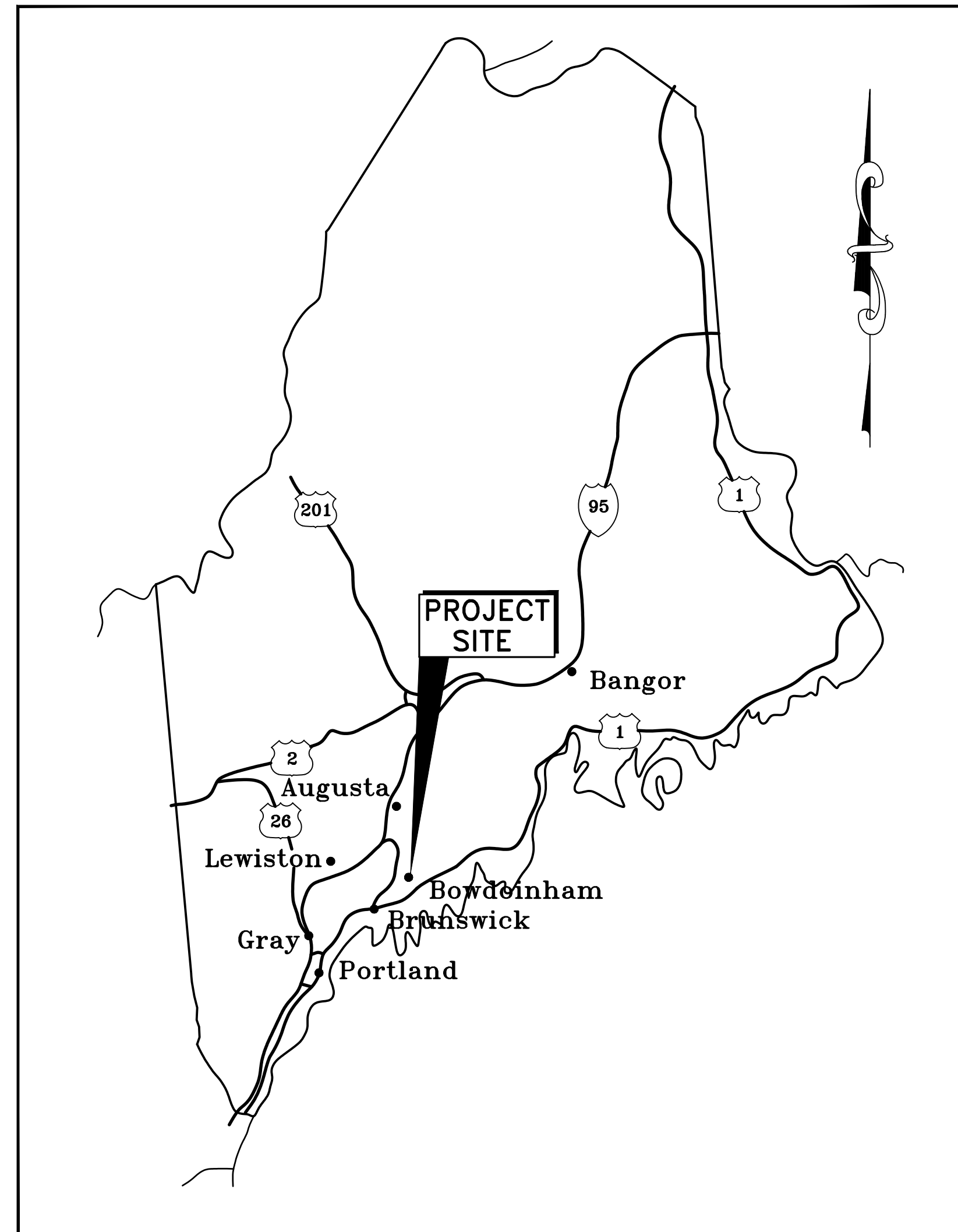


CONSTRUCTION DRAWINGS

TOWN OFFICE PARKING EXPANSION

TOWN OF BOWDOINHAM

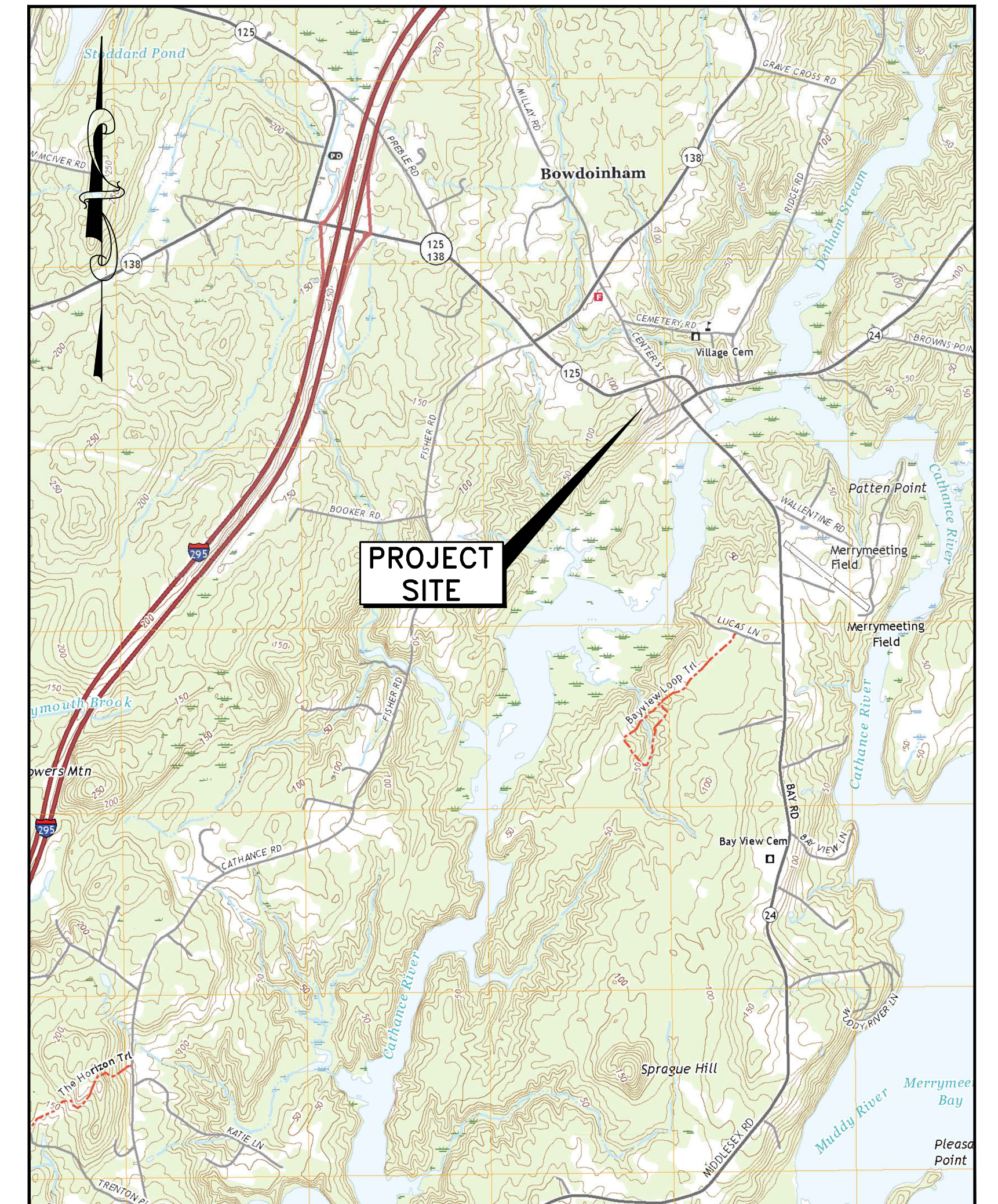
PINE TREE ENGINEERING, INC.
53 Front Street
Bath, Maine 04530



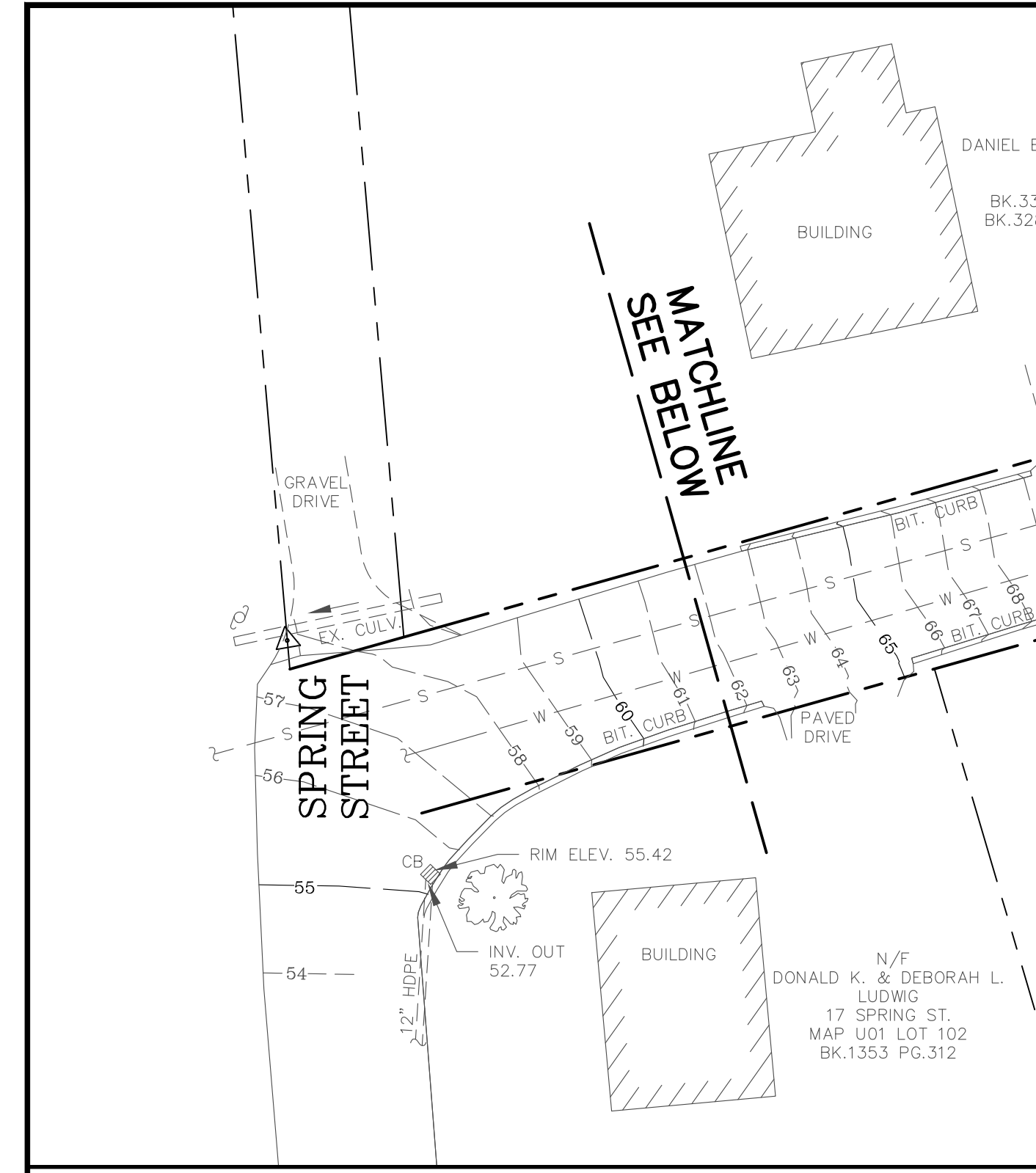
LOCATION MAP
SCALE: 1"=33± MILES

DRAWING INDEX

- 1 COVER
- 2 EXISTING CONDITIONS PLAN
- 3 PROPOSED SITE PLAN AND DETAILS
- 4 PROPOSED GRADING PLAN



AREA MAP
SCALE: 1"=2000±



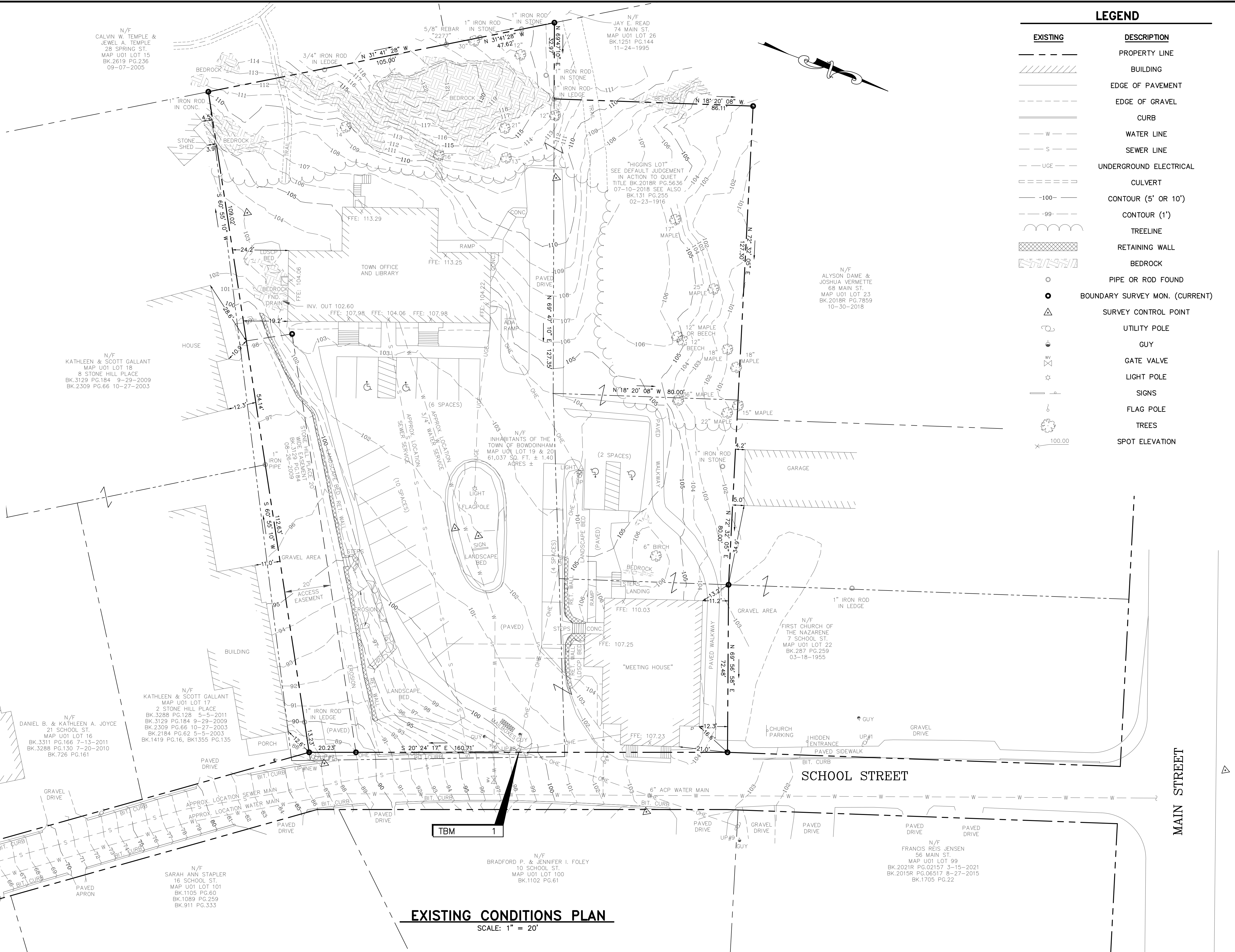
INSET
SCALE: 1" = 20'

SURVEY NOTES:

- 1) BEARINGS ARE REFERENCED TO THE STATE PLANE COORDINATE SYSTEM OF 1983, MAINE WEST ZONE, AS DETERMINED BY STATIC OBSERVATION WITH CORRECTIONS APPLIED BY NOAA'S ONLINE POSITIONING USER SERVICE.
- 2) ELEVATIONS ARE REFERENCED TO THE NORTH AMERICAN VERTICAL DATUM OF 1988 (NAVD88) AS DETERMINED BY STATIC OBSERVATION WITH CORRECTIONS APPLIED FROM NOAA'S ONLINE POSITIONING USER SERVICE.
- 3) FIELD WORK WAS PERFORMED BY LITTLE RIVER LAND SURVEYING, INC. ON OCTOBER 19 AND 21, 2021.
- 4) FOR INFORMATION RELATED TO PROPERTY LINES REFERENCE MAY BE MADE TO THE FOLLOWING PLANS:
 - a) "RETRACEMENT SURVEY... INHABITANTS OF THE TOWN OF BOWDOINHAM... 13 SCHOOL STREET" DATED FEBRUARY 17, 2022 AND REVISED FEBRUARY 23, 2022 BY LITTLE RIVER LAND SURVEYING, INC. AS OF YET UNRECORDED.
 - b) "SCHOOL STREET MUNICIPAL LOTS... STANDARD BOUNDARY SURVEY" DATED OCTOBER 1, 1997 BY HARTY & HARTY PROFESSIONAL LAND SURVEYING, RECORDED IN SAGADAHOC COUNTY REGISTRY OF DEEDS IN PLAN BOOK 2015P, PAGE 10.

TEMPORARY BENCHMARKS:

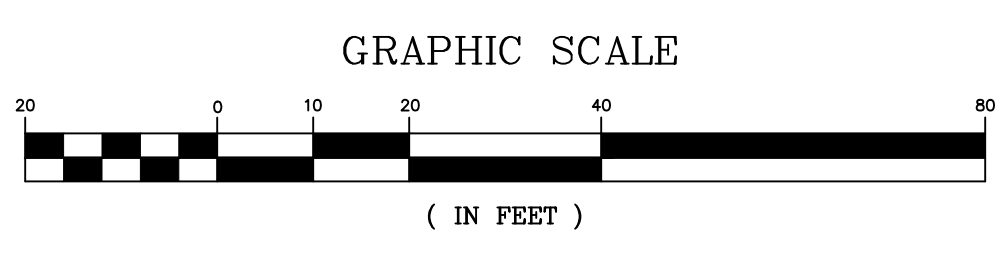
- TBM-1
SPIKE IN UTILITY POLE 12" ABOVE GRADE
ELEV. 100.21



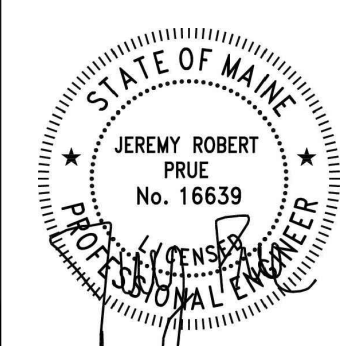
EXISTING CONDITIONS PLAN
SCALE: 1" = 20'

| EXISTING | DESCRIPTION |
|----------|--------------------------------|
| --- | PROPERTY LINE |
| ▨ | BUILDING |
| --- | EDGE OF PAVEMENT |
| --- | EDGE OF GRAVEL |
| --- | CURB |
| --- | WATER LINE |
| --- | SEWER LINE |
| --- | UNDERGROUND ELECTRICAL |
| --- | CULVERT |
| --- | CONTOUR (5' OR 10') |
| --- | CONTOUR (1') |
| --- | TREELINE |
| --- | RETAINING WALL |
| --- | BEDROCK |
| ○ | PIPE OR ROD FOUND |
| ● | BOUNDARY SURVEY MON. (CURRENT) |
| △ | SURVEY CONTROL POINT |
| ○ | UTILITY POLE |
| ○ | GUY |
| ○ | GATE VALVE |
| ○ | LIGHT POLE |
| ○ | SIGNS |
| ○ | FLAG POLE |
| ○ | TREES |
| ○ | SPOT ELEVATION |

C:\Users\Jeremy.Prue\Desktop\Projects\CAD\21014_Bowdoinhom_Town_Office.dwg\21014_exbise.dwg 10/14/22 3:53pm



| | |
|--------------|------------|
| DESIGNED BY: | JRP |
| DRAWN BY: | DB |
| CHECKED BY: | RLP |
| APPROVED BY: | JRP |
| DATE: | 10/17/2022 |



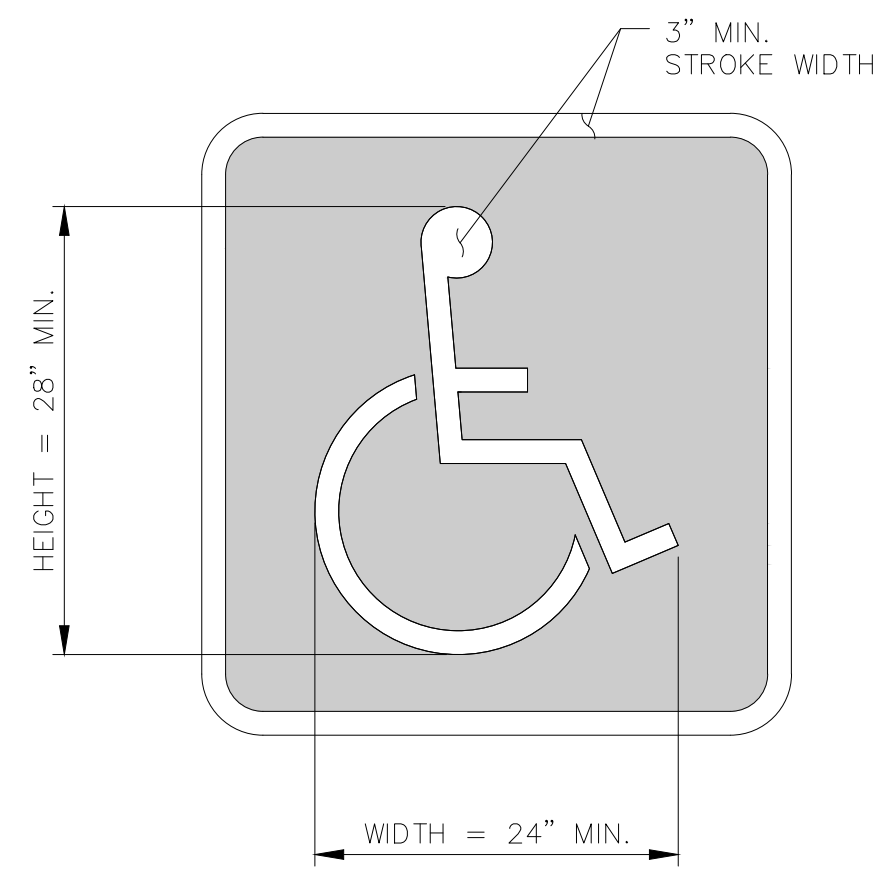
Pine Tree Engineering
Civil/Environmental Engineering + Surveying
53 Front Street
Bath, Maine 04530
Tel: (207) 443-1508
Fax: (207) 442-7029

CLIENT
TOWN OF BOWDOINHAM
13 SCHOOL STREET
BOWDOINHAM, MAINE 04008

PROJECT
TOWN OFFICE PARKING EXPANSION
TITLE
EXISTING CONDITIONS PLAN

| | |
|-------------|--------------|
| SCALE | AS SHOWN |
| PROJECT NO. | 21014 |
| DRAWING NO. | 21014 exbase |
| SHT. | 2 of 4 |
| REV. | 0 |

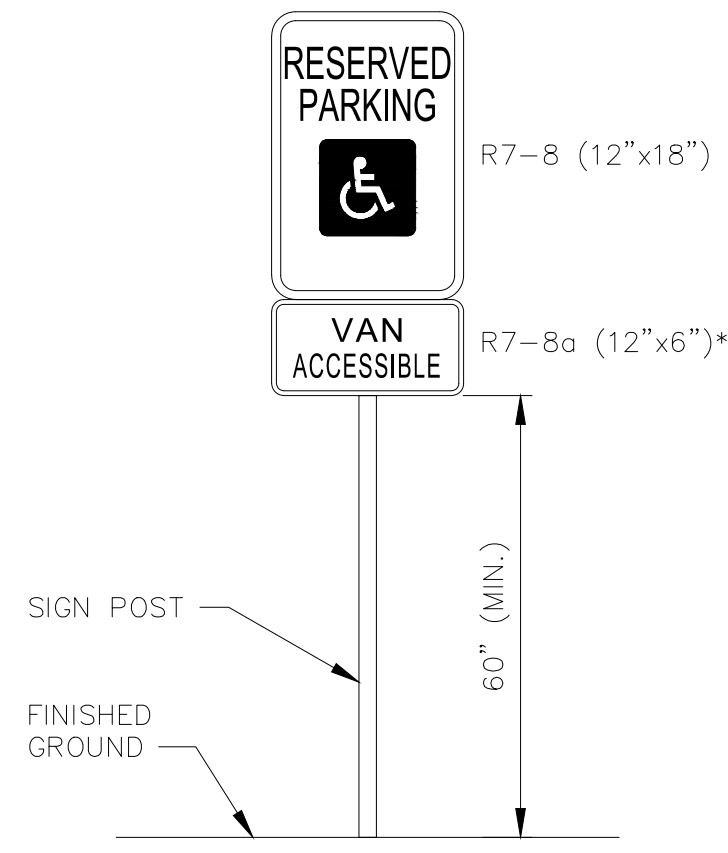
| REV | DATE | STATUS | BY | CHKD | APPD |
|-----|----------|--------------------------------|-----|------|------|
| 0 | 10/17/22 | SUBMITTAL FOR P.B. APPLICATION | JRP | RLP | JRP |



NOTE:
BLUE BACKGROUND REQUIRED AND
WHITE BORDER IS OPTIONAL.

ACCESSIBLE PARKING SPACE MARKING DETAIL

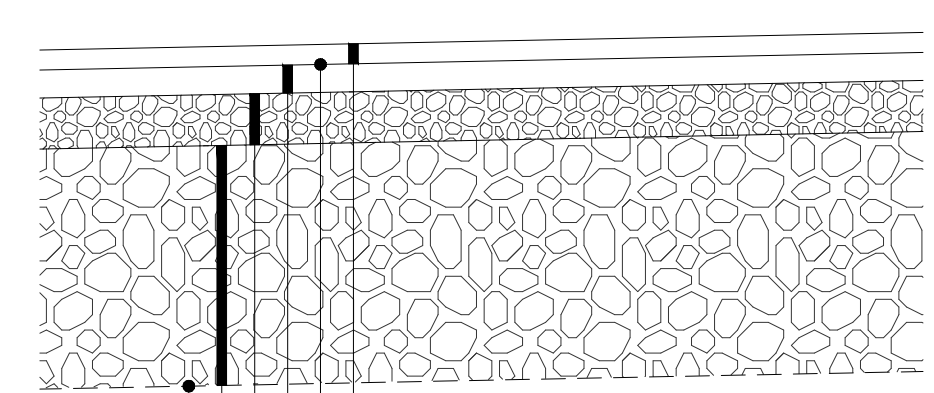
NOT TO SCALE



*ONLY TO BE USED FOR
VAN ACCESSIBLE SPACES

ACCESSIBLE PARKING SIGN DETAIL

NOT TO SCALE

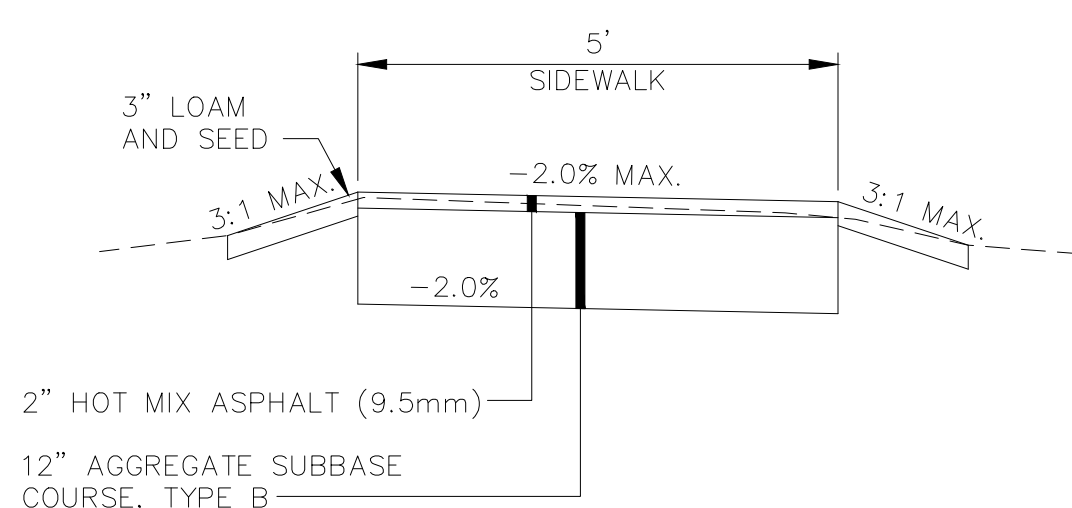


TYPICAL PAVEMENT MATERIAL

- 1 1/4" WEARING COURSE 9.5 mm HMA TACK COAT REQUIRED
- 2" BASE COURSE 19.0 mm HMA
- 6" AGGREGATE BASE COURSE (MAINEDOT TYPE A)
- 12" AGGREGATE SUBBASE COURSE (MAINEDOT TYPE D)
- SUBGRADE STABILIZATION GEOTEXTILE FABRIC (MIRAFI HP370 OR APPROVED EQUAL)

PAVED PARKING AREA

SCALE: 1" = 1'-0"

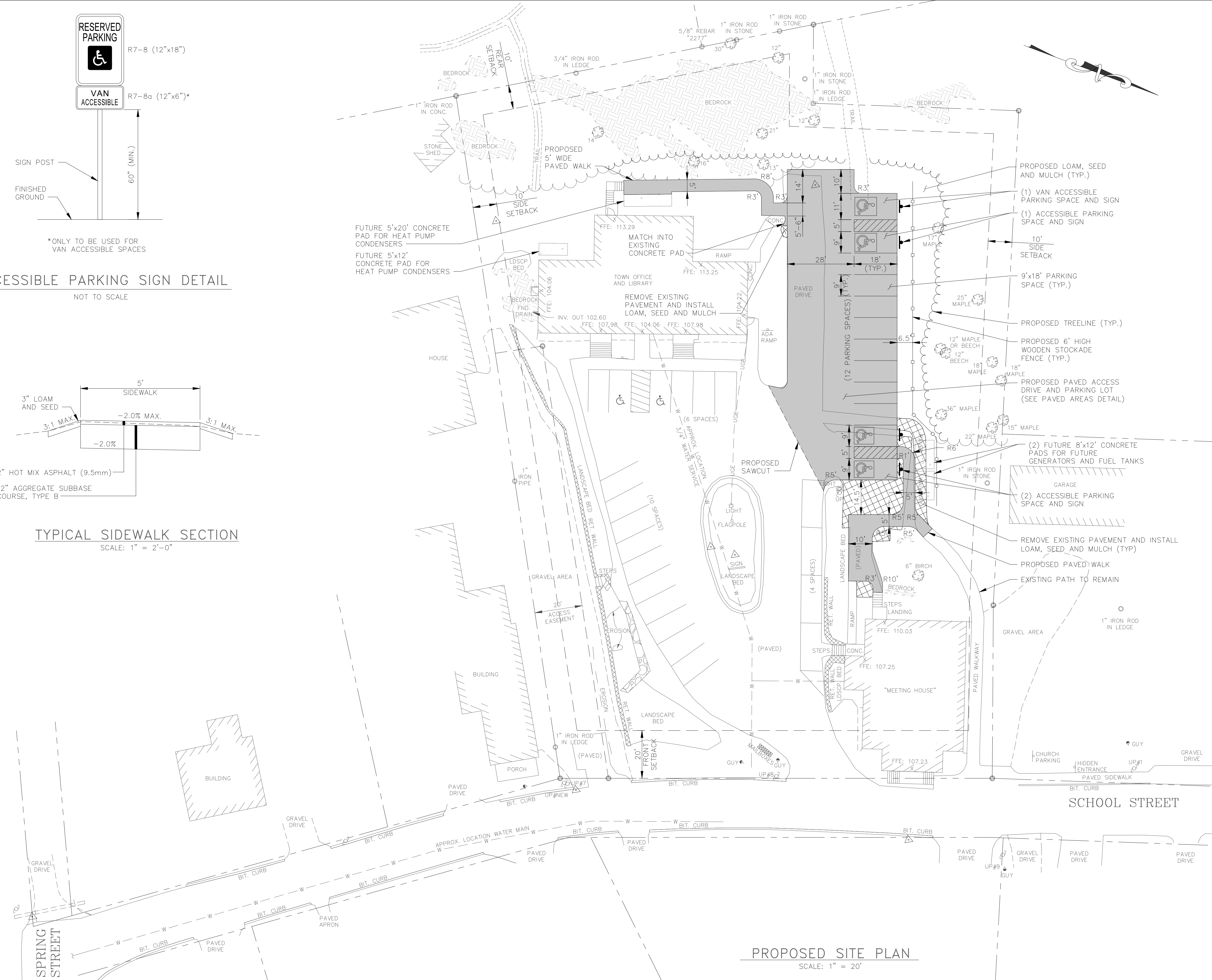


TYPICAL SIDEWALK SECTION

SCALE: 1" = 2'-0"

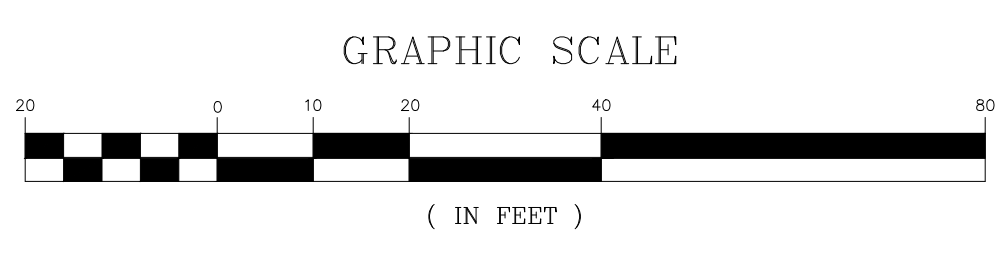
LEGEND

| EXISTING | DESCRIPTION | PROPOSED |
|----------|--------------------------------|----------|
| --- | PROPERTY LINE | --- |
| --- | SETBACK LINE | --- |
| | BUILDING | --- |
| --- | EDGE OF PAVEMENT | --- |
| --- | EDGE OF GRAVEL | --- |
| --- | CURB | --- |
| --- | TREELINE | --- |
| --- | FENCE | --- |
| | RETAINING WALL | --- |
| | BEDROCK | --- |
| △ | SURVEY CONTROL POINT | --- |
| ○ | PIPE OR ROD FOUND | --- |
| ○ | BOUNDARY SURVEY MON. (CURRENT) | --- |
| ○ | UTILITY POLE | --- |
| ○ | GUY | --- |
| ○ | LIGHT POLE | --- |
| ○ | SIGNS | --- |
| ○ | FLAG POLE | --- |
| ○ | TREES | --- |
| --- | SAWCUT | --- |

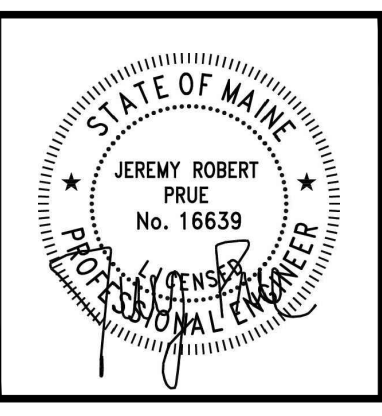


PROPOSED SITE PLAN

SCALE: 1" = 20'



| REV | DATE | STATUS | BY | CHKD | APPD |
|-----|----------|--------------------------------|-----|------|------|
| 0 | 10/17/22 | SUBMITTAL FOR P.B. APPLICATION | JRP | RLP | JRP |



| | |
|--------------|------------|
| DESIGNED BY: | JRP |
| DRAWN BY: | DB |
| CHECKED BY: | RLP |
| APPROVED BY: | JRP |
| DATE: | 10/17/2022 |

Pine Tree Engineering
53 Front Street
Bath, Maine 04530
Tel: (207) 443-1508
Fax: (207) 442-7029
Civil/Environmental Engineering • Surveying

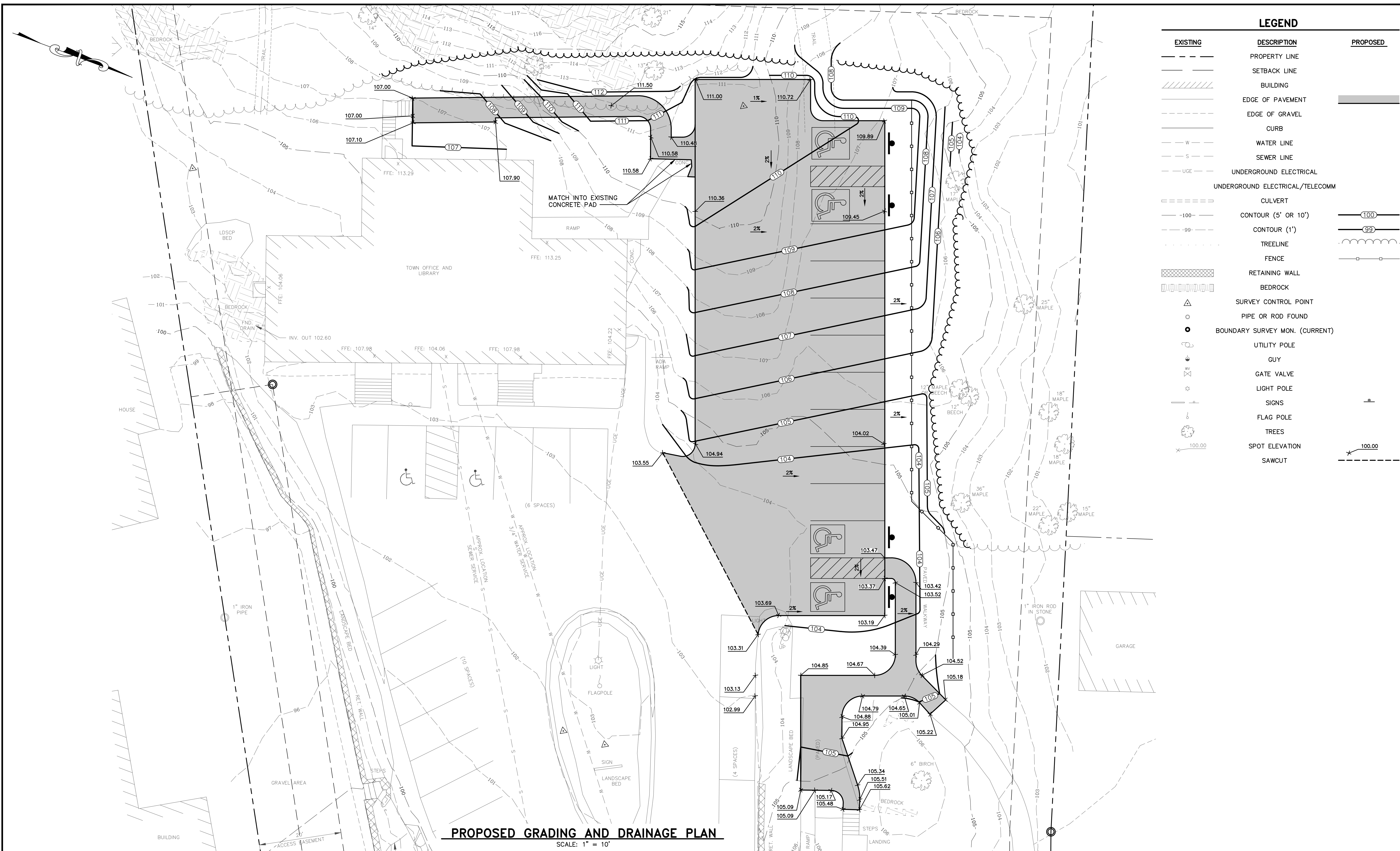
CLIENT
TOWN OF BOWDOINHAM
13 SCHOOL STREET
BOWDOINHAM, MAINE 04008

PROJECT
TOWN OFFICE PARKING EXPANSION
TITLE
PROPOSED SITE PLAN AND DETAILS

| | |
|-------------|------------|
| SCALE | AS SHOWN |
| PROJECT NO. | 21014 |
| DRAWING NO. | 21014 site |
| SHT. | 3 of 4 |
| REV. | 0 |

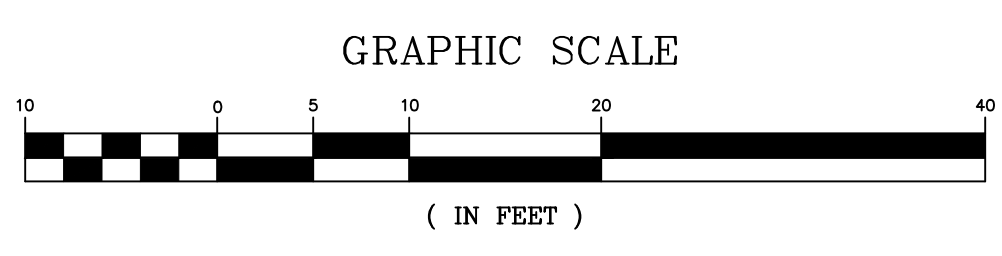
C:\Users\Jeremy Prue\Desktop\Projects\CAD\21014_Bowdoinham Town Office.dwg\21014_site.dwg 10/14/22 3:53pm

C:\Users\Jeremy Prue\Desktop\Projects\CAD\21014_Bowdoinham Town Office.dwg 2/10/14 GRADING.dwg

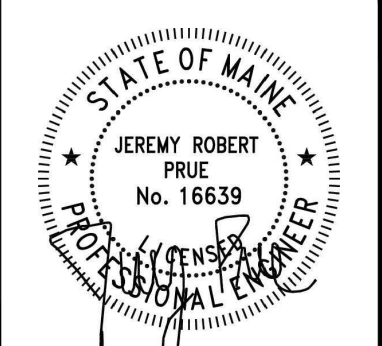


| EXISTING | DESCRIPTION | PROPOSED |
|----------|---------------------------------|----------|
| --- | PROPERTY LINE | --- |
| --- | SETBACK LINE | --- |
| --- | BUILDING | --- |
| --- | EDGE OF PAVEMENT | --- |
| --- | EDGE OF GRAVEL | --- |
| --- | CURB | --- |
| --- | WATER LINE | --- |
| --- | SEWER LINE | --- |
| --- | UNDERGROUND ELECTRICAL | --- |
| --- | UNDERGROUND ELECTRICAL/TELECOMM | --- |
| --- | CULVERT | --- |
| --- | CONTOUR (5' OR 10') | --- |
| --- | CONTOUR (1') | --- |
| --- | TREELINE | --- |
| --- | FENCE | --- |
| --- | RETAINING WALL | --- |
| --- | BEDROCK | --- |
| --- | SURVEY CONTROL POINT | --- |
| --- | PIPE OR ROD FOUND | --- |
| --- | BOUNDARY SURVEY MON. (CURRENT) | --- |
| --- | UTILITY POLE | --- |
| --- | GUY | --- |
| --- | GATE VALVE | --- |
| --- | LIGHT POLE | --- |
| --- | SIGNS | --- |
| --- | FLAG POLE | --- |
| --- | TREES | --- |
| --- | SPOT ELEVATION | --- |
| --- | SAWCUT | --- |

PROPOSED GRADING AND DRAINAGE PLAN
SCALE: 1" = 10'



| REV | DATE | STATUS | BY | CHKD | APPD |
|-----|----------|--------------------------------|-----|------|------|
| 0 | 10/17/22 | SUBMITTAL FOR P.B. APPLICATION | JRP | RLP | JRP |



DESIGNED BY: JRP
DRAWN BY: DB
CHECKED BY: RLP
APPROVED BY: JRP
DATE: 10/17/2022

Pine Tree Engineering
Civil/Environmental Engineering + Surveying
53 Front Street
Bath, Maine 04530
Tel: (207) 443-1508
Fax: (207) 442-7029

CLIENT
TOWN OF BOWDOINHAM
13 SCHOOL STREET
BOWDOINHAM, MAINE 04008

PROJECT
TOWN OFFICE PARKING EXPANSION
TITLE
PROPOSED GRADING PLAN

| SCALE | AS SHOWN |
|-------------|---------------|
| PROJECT NO. | 21014 |
| DRAWING NO. | 21014 GRADING |
| SHT. | 4 of 4 |
| REV. | 0 |