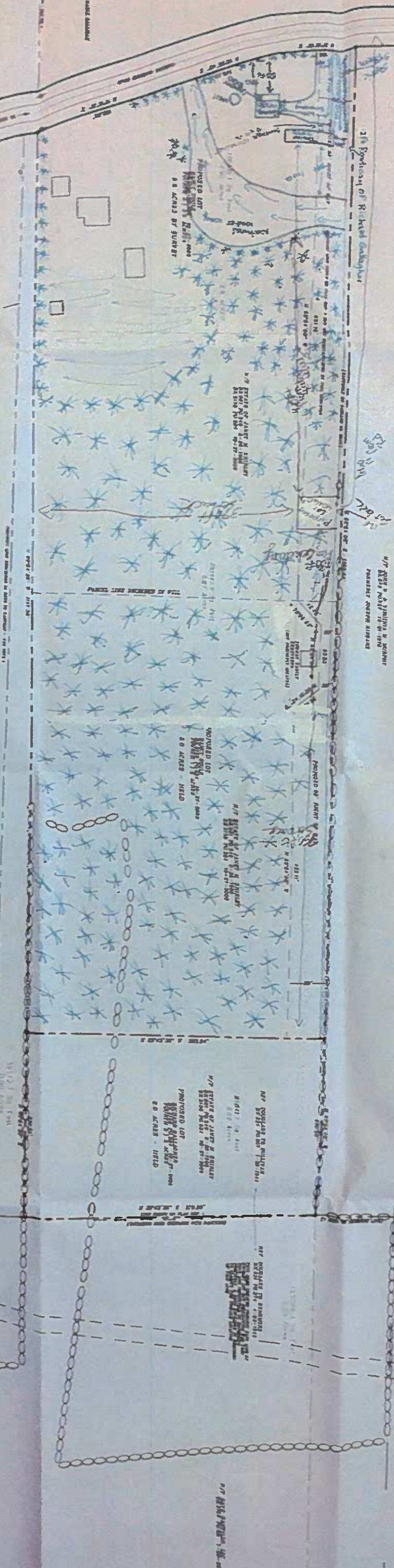


**REFERENCE PLANS**  
 1. RECORD MAP NO. 1000, COUNTY OF ANDROSCOGG, STATE OF MAINE, 1941  
 2. RECORD MAP NO. 1000, COUNTY OF ANDROSCOGG, STATE OF MAINE, 1941  
 3. RECORD MAP NO. 1000, COUNTY OF ANDROSCOGG, STATE OF MAINE, 1941

**NOTES**  
 1. THIS PLAN IS BASED ON THE DATA OF THE RECORD MAPS REFERRED TO ABOVE.  
 2. THE BOUNDARIES SHOWN ON THIS PLAN ARE THE RESULT OF A SURVEY MADE BY THE SURVEYOR IN ACCORDANCE WITH THE MAINE SURVEYING ACTS.  
 3. THE SURVEY WAS MADE BY THE SURVEYOR IN ACCORDANCE WITH THE MAINE SURVEYING ACTS.

RICHMOND  
 HOWDOINHAM



RECORDING INFORMATION  
 STATE OF MAINE, SAGadahoc COUNTY  
 COUNTY REGISTER OF DEEDS  
 RECEIVED  
 FILED  
 2012

- LEGEND**
- 4" x 4" MARKERS SET AT 10' INTERVALS
  - 4" x 4" MARKERS SET AT 20' INTERVALS
  - 4" x 4" MARKERS SET AT 30' INTERVALS
  - 4" x 4" MARKERS SET AT 40' INTERVALS
  - 4" x 4" MARKERS SET AT 50' INTERVALS
  - 4" x 4" MARKERS SET AT 60' INTERVALS
  - 4" x 4" MARKERS SET AT 70' INTERVALS
  - 4" x 4" MARKERS SET AT 80' INTERVALS
  - 4" x 4" MARKERS SET AT 90' INTERVALS
  - 4" x 4" MARKERS SET AT 100' INTERVALS
  - 4" x 4" MARKERS SET AT 110' INTERVALS
  - 4" x 4" MARKERS SET AT 120' INTERVALS
  - 4" x 4" MARKERS SET AT 130' INTERVALS
  - 4" x 4" MARKERS SET AT 140' INTERVALS
  - 4" x 4" MARKERS SET AT 150' INTERVALS
  - 4" x 4" MARKERS SET AT 160' INTERVALS
  - 4" x 4" MARKERS SET AT 170' INTERVALS
  - 4" x 4" MARKERS SET AT 180' INTERVALS
  - 4" x 4" MARKERS SET AT 190' INTERVALS
  - 4" x 4" MARKERS SET AT 200' INTERVALS

\* - Tree/Tree Line  
 ○ - Field  
 ○ - Direction of Under Curb  
 ○ - Septic System

SCALE IN FEET  
 0 50 100 150

CERTIFICATION TO MAINE RULES  
 THAT THE SURVEY WAS MADE IN ACCORDANCE WITH THE MAINE SURVEYING ACTS  
 (1) BY SIGNATURE BELOW

**STANDARD BOUNDARY SURVEY**  
 OF JANET M. SHIRLEY ESTATE  
 770 CARBINE MACHINE ROAD  
 HOWDOINHAM, MAINE  
 SCALE 1" = 60'  
 DATE: JULY 27, 2012  
 FOR NANCY SOULE  
 BY BRIAN SMITH SURVEYING, INC.  
 100 W. 100th Street, Suite 100  
 Portland, ME 04106  
 PHONE: 603-883-1111  
 FAX: 603-883-1112  
 EMAIL: brian@briansmithsurveying.com

Proposed Plan Made  
 by Emily Soule



- We have contacted Environmental Projects For Fluid Removal/Spills if necessary  
- Elisha 653-4409 Response agreement manager

- All work Done to vehicles will be happening in the Garage out of site of neighbors

- All vehicles that are stored in the lot will have a lg Drip tray that fits under the entire under carriage of the vehicle in case of any leakage from vehicles, and an absorbent mat will be placed under the Drip trays in case of any overflow. Drip pans will be checked often so overflow does not happen.

- The Garage where the vehicles will be worked on has a concrete slab which will prevent any fluids that may leak to be absorbed into the ground.

- Parts removed from vehicle will be stored in a water tight storage unit 8x9 located near the Trailer, with Locking Doors

- Tree beside trailer will be removed for larger Rd access and tree stump at end of Rd has already been removed