

Bowdoinham Village Partnership

Transportation Feasibility Study

Public Meeting #2

March 31, 2025



Study Team

(Village Partnership Initiative)

Consultant

- Gorrill Palmer
- North Star Planning
- Aceto Landscape Architects
- James Tasse Consulting

Municipality

- Bowdoinham (Yvette Meunier)

MaineDOT

- Ian Gorecki

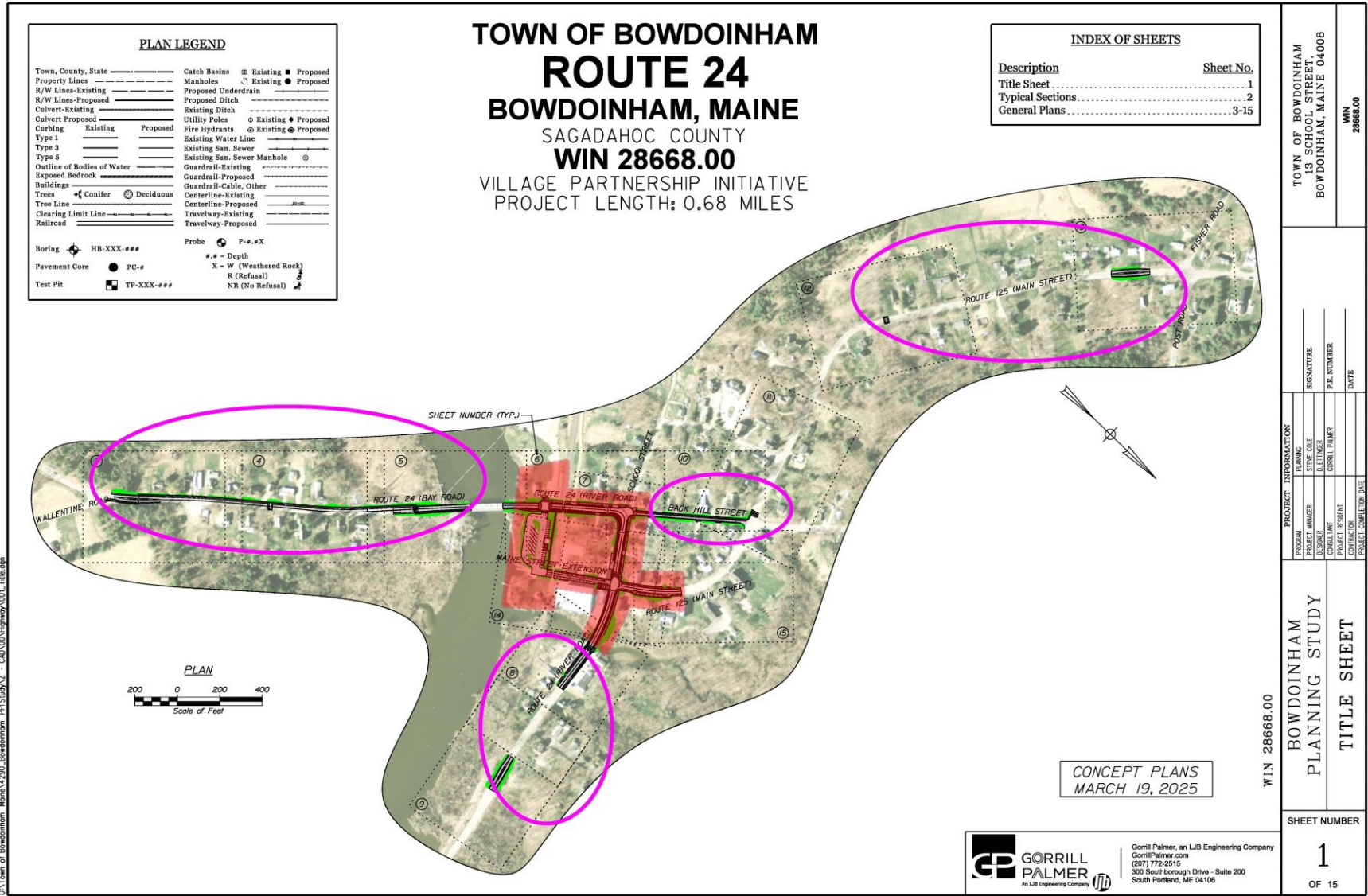


Expanded Study Limits

- Bay Rd (Rte 24)
- River Rd (Rte 24)
- Back Hill Street
- Main St (Rte 125)

(Wallentine Rd to Ridge Rd)

Length = 0.68 mi



Study Scope

(Transportation Planning Study)

- Corridor Safety
- Traffic Calming
- Pedestrian Connectivity
- Access Management
- Pedestrian and Bicycle Accommodations
- On-street parking
- Placemaking Opportunities
- Landscaping, Lighting, Wayfinding, Amenities
- Economic Development



Safety Review

- High Crash Locations – None
- MaineDOT Crash Summaries
- Two Crashes (2021-2023)
- Ten Crashes (2014-2023)
- Six Crashes at River Rd/Main St Intersection
- No Fatalities/Serious Injuries (2014-2023)
- No Bike or Pedestrian Related Crashes (2014-2023)

Safety Review for Bowdoinham VPI Study WIN 28668.00 Bowdoinham, Maine

Date: December 9, 2024
Subject: Safety Review – Bowdoinham, Maine (WIN 28668.00)
From: Randy Dunton, PE, PTOE – Gorrill Palmer

INTRODUCTION:

The following is a safety review for the Bowdoinham VPI study (WIN 28668.00). The study's limits are defined in the graphic below and refer to the downtown village area of Bowdoinham. According to MaineDOT Map Viewer, River Road (Route 24) and Main Street (Route 125) are classified as major collectors and posted at 25 mph. Main Street Extension is classified as a Townway and has an unposted speed limit, according to MaineDOT Map Viewer. Route 125 & Route 24 range in AADT from approximately 2012 to 1800, respectively. The roads in this area are a single travel lane in each direction with no traffic signals but a flashing beacon at the Route 125/Route 24 intersection.



Sources: This safety review is based on; a site visit by the Town, MaineDOT, Gorrill Palmer, Aceto Landscaping, North Star Planning, and Community members on 7/17/2024; MaineDOT crash history for the most recent available three years (2021-2023) and ten-year crash history (2014-2023)

Based on that information, we offer the following summary.

HIGH CRASH LOCATIONS:

One indicator if an area has a crash problem is if areas are classified as high crash locations. MaineDOT uses two criteria to classify a High Crash Location (HCL). Both criteria must be met to be classified as a HCL.



STRUCTURAL



FALL PROTECTION
SAFETY



TRANSPORTATION



SITE DESIGN



SURVEY



WATER
RESOURCES



TECHNOLOGY
& INNOVATION

Celebrate Bowdoinham (Sept 14)

Amenities desired:

- Dog Park
- New Pavilion
- More parking
- Mature old trees
- Community compost pile
- Decorated sidewalks, Colorful polka dots

Bicycle safety:

- Improve safety on Rt-24 (all of it), Pond Rd, and Main St
- Convert the train tracks
- Downtown district area
- Pro speed bumps or other traffic slowing measures
- Improve downtown
- Add bike path
- Bike path and reminders through signage

Celebrate Bowdoinham (Sept 14)

Pedestrian safety:

- Sidewalk on Bay Rd to Wallentine (3 comments)
- Rebuild walls on Ridge Rd and Center St
- Re-paint existing crosswalks
- Crosswalks on Back Hill St
- Crosswalks connecting the two parks (2 comments)
- Crosswalk to Three Robbers (Main & Rt-24) (2 comments)

Pedestrian safety:

- Main St. in the village needs speed table and more speed signs
- Pro speed bumps or other traffic calming measures
- Make sure sidewalks are plowed for people to walk on safely all winter
- Speed bumps on hill to enforce speed
- Village speed enforcement please

Public Meeting #1 (Oct 15)

- Truck turning movement concerns
- Support for 25 mph to Wallentine Rd
- Boat ramp parking concerns
- Concerns with impacts to Bath House
- Impacts to parking or winter maintenance on Main St Ext. concerns.
- Support for traffic calming
- Not sure all-way stop is needed at River / Back Hill Intersection.
- Move gateway treatment north of Ridge Road
- Move gateway treatment up hill on Main Street
- Support for pedestrian and bike Accommodations
- Address bikes on Main St
- Sight distance issue at the bottom of Back Hill Street
- Sidewalks to Country Store.

Summary of Plan Revisions

- Revisited travel lane and shoulder widths (10' lanes & 4' shoulders) to (11' lanes & 3' shoulders).
- Shifted the boat ramp parking layout and entrance to avoid impacts on the bathhouse.
- Revised the River Road intersection with Back Hill Street / Spring Street from a 4-way stop to a 2-way stop.
- Eliminated the all-way stop at the Main Street and River Road intersection and proposed a raised crosswalk near Three Robbers Pub.
- Revised the sidewalk design near the gas station.
- Shifted the gateway treatments to be further away from the village on all three state road approaches (Bay Road, River Road, Main Street).
- Proposed additional speed humps or raised crosswalks on each approach to slow traffic.
- Added rapid flashing beacon assemblies at numerous crosswalk locations.
- Shifted the locations of 25 mph speed limit signs to be outside the gateway treatment areas.
- Added speed feedback signs at those locations.
- Modified the geometry of the River Road intersection with Back Hill Street and Spring Street, relocated the crosswalks, and added a truck apron to reduce the intersection size.
- Revised the Main Street Extension design to be one-way with parking and a sidewalk. Developed two options for consideration.

Date: 3/20/2025

Username: Mike Cudiff

Division: HIGHWAY

Filename: ...:\00\Highway\001_Title.dgn

U:\Town of Bowdoinham - Maine\4790_Bowdoinham - PPS Study\2 - CAD\00\Highway\001_Title.dgn

PLAN LEGEND

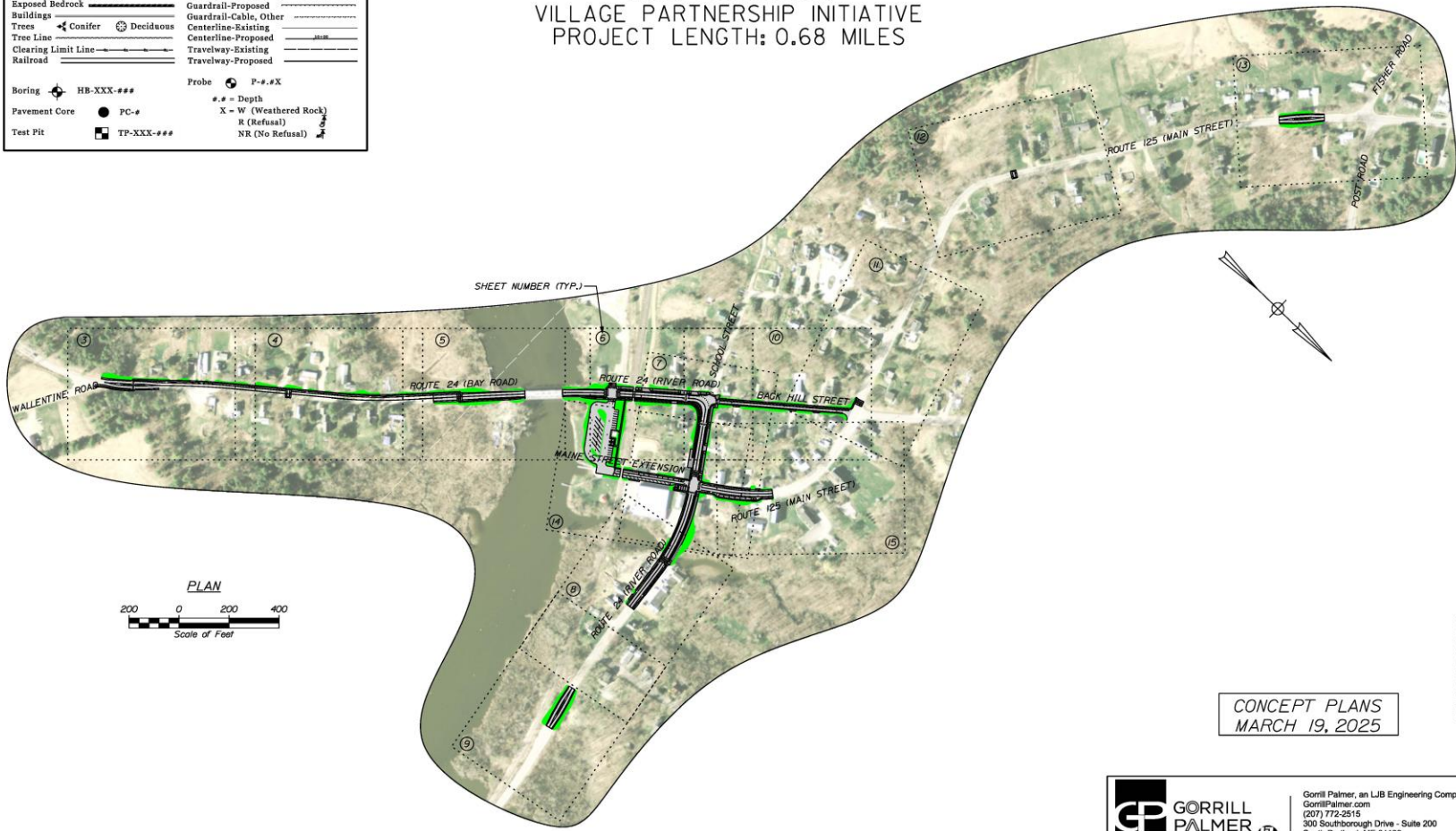
Town, County, State	-----	Catch Basins	Existing	Proposed
Property Lines	-----	Manholes	Existing	Proposed
R/W Lines-Existing	-----	Proposed Underdrain	-----	-----
R/W Lines-Proposed	-----	Proposed Ditch	-----	-----
Culvert-Existing	-----	Existing Ditch	-----	-----
Culvert-Proposed	-----	Utility Poles	Existing	Proposed
Curbing	Existing	Proposed	Existing	Proposed
Type 1	-----	Fire Hydrants	Existing	Proposed
Type 3	-----	Existing Water Line	-----	-----
Type 5	-----	Existing San. Sewer	-----	-----
Outline of Bodies of Water	-----	Existing San. Sewer Manhole	-----	-----
Exposed Bedrock	-----	Guardrail-Existing	-----	-----
Buildings	-----	Guardrail-Proposed	-----	-----
Trees	Conifer	Guardrail-Cable, Other	-----	-----
Tree Line	Deciduous	Centerline-Existing	-----	-----
Clearing Limit Line	-----	Centerline-Proposed	-----	-----
Railroad	-----	Travelway-Existing	-----	-----
		Travelway-Proposed	-----	-----

Boring	HB-XXX-###	Probe	P-#-#X
		## = Depth	
Pavement Core	PC-#	X = W (Weathered Rock)	
		R (Refusal)	
Test Pit	TP-XXX-###	NR (No Refusal)	

TOWN OF BOWDOINHAM
ROUTE 24
BOWDOINHAM, MAINE
 SAGADAHOC COUNTY
WIN 28668.00
 VILLAGE PARTNERSHIP INITIATIVE
 PROJECT LENGTH: 0.68 MILES

INDEX OF SHEETS

Description	Sheet No.
Title Sheet	1
Typical Sections	2
General Plans	3-15



CONCEPT PLANS
 MARCH 19, 2025

GORRILL PALMER
 An LJB Engineering Company

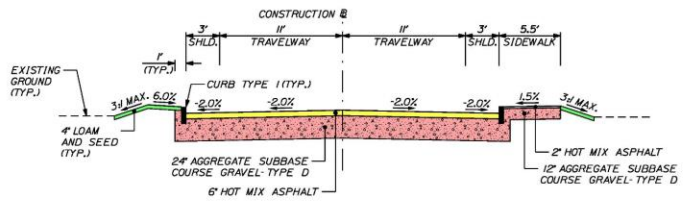
Gorrill Palmer, an LJB Engineering Company
 GorrillPalmer.com
 (207) 772-2515
 300 Southborough Drive - Suite 200
 South Portland, ME 04106

TOWN OF BOWDOINHAM 13 SCHOOL STREET, BOWDOINHAM, MAINE 04008		WIN 28668.00	
PROGRAM	PLANNING	SIGNATURE	DATE
PROJECT MANAGER	STATE CODE	B. LINGER	
DESIGNER	CONSULTANT	GORRILL PALMER	
PROJECT RESIDENT	CONTRACTOR		
PROJECT COMPLETION DATE			
BOWDOINHAM PLANNING STUDY		TITLE SHEET	
SHEET NUMBER		1	
		OF 15	

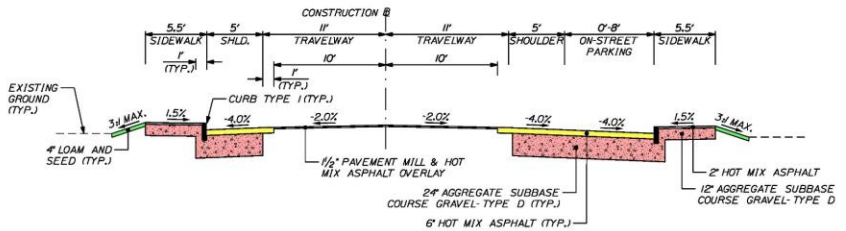
Concepts

- Study Limits
- Bay Road
- River Road
- Back Hill Street
- Main St
- Main St Ext.
- Maily
- Waterfront Park
- Cathance River
- Boat Ramp

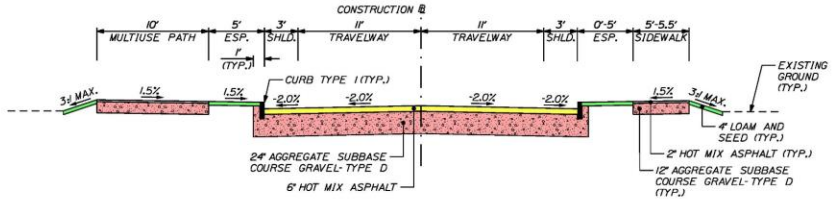
SHLD. = SHOULDER
ESP. = ESPLANADE



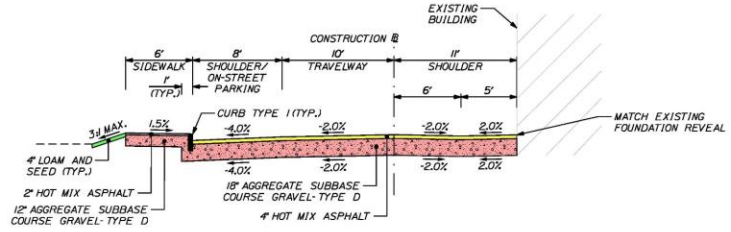
ROUTE 24 (BAY ROAD)
FULL DEPTH RECONSTRUCTION



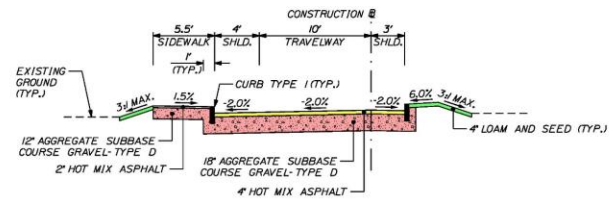
ROUTE 125 (MAIN STREET)
FULL DEPTH RECONSTRUCTION



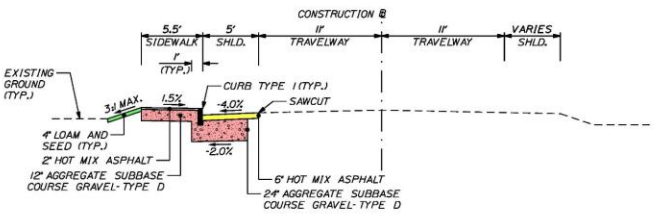
ROUTE 24 (RIVER ROAD)
FULL DEPTH RECONSTRUCTION



MAIN STREET EXTENSION
FULL DEPTH RECONSTRUCTION



BACK HILL STREET
FULL DEPTH RECONSTRUCTION
WITH SIDEWALK



ROUTE 24 (BAY ROAD)
SHOULDER RECONSTRUCTION
WITH SIDEWALK

NOT TO SCALE

TOWN OF BOWDOINHAM
13 SCHOOL STREET
BOWDOINHAM, ME 04008

WIN
28668.00

NO.	DATE	BY	CHKD.	APP'D.
1				
2				
3				
4				
5				
6				
7				
8				
9				
10				

BOWDOINHAM
PLANNING STUDY
TYPICAL SECTIONS

SHEET NUMBER

2

OF 15



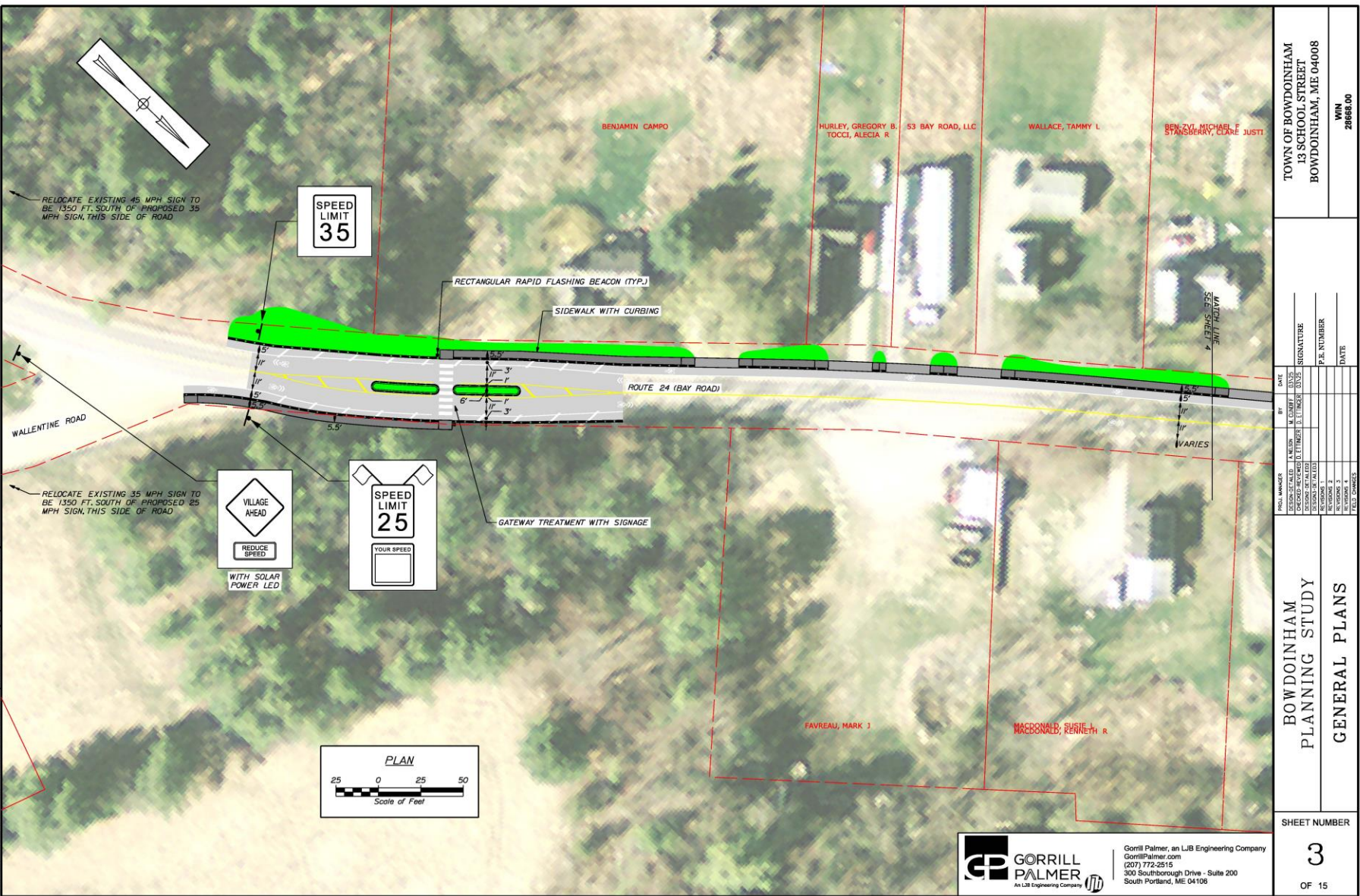
Gorrill Palmer, an LJB Engineering Company
GorrillPalmer.com
(207) 772-2515
300 Southborough Drive - Suite 200
South Portland, ME 04106

Concepts

- Typical Sections
- Roadway Details

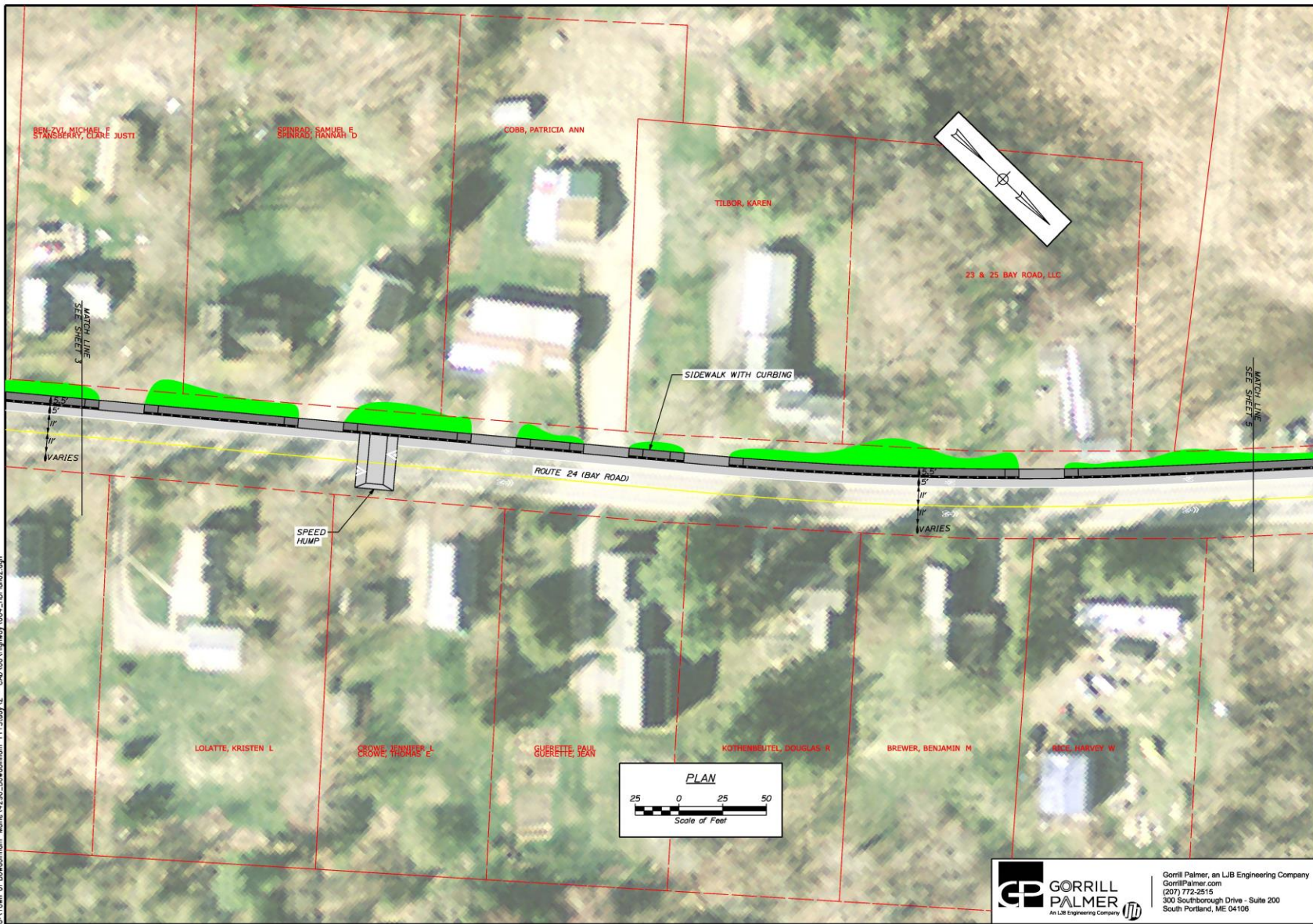


U:\Town of Bowdoinham - Maine\1790_Bowdoinham_Plan_Study_Z - CAD\00\Highway\003_18Pland.dgn
 Filename: ...:\00\Highway\003_18Pland.dgn
 Division: HIGHWAY
 Username: Mike.Cundiff
 Date: 3/20/2025



Concepts

- Safety Improvements
- Intersection Improvements
- Pedestrian / Bike Accommodations
- Traffic Calming
- Access Management
- Parking Accommodations
- Pedestrian Connectivity
- Placemaking Opportunities



TOWN OF BOWDOINHAM 13 SCHOOL STREET BOWDOINHAM, ME 04008		WIN 28668.00
NO. UNITS	DATE	
DESIGNED BY: A. MASON	DATE: 03/20/25	
CHECKED BY: D. LITNER	DATE: 03/20/25	
DESIGNED BY: A. MASON	DATE: 03/20/25	
NO. UNITS	P.P. NUMBER	DATE
UNITS: 1		
UNITS: 2		
UNITS: 3		
UNITS: 4		
UNITS: 5		
UNITS: 6		
UNITS: 7		
UNITS: 8		
UNITS: 9		
UNITS: 10		
UNITS: 11		
UNITS: 12		
UNITS: 13		
UNITS: 14		
UNITS: 15		
UNITS: 16		
UNITS: 17		
UNITS: 18		
UNITS: 19		
UNITS: 20		
UNITS: 21		
UNITS: 22		
UNITS: 23		
UNITS: 24		
UNITS: 25		
UNITS: 26		
UNITS: 27		
UNITS: 28		
UNITS: 29		
UNITS: 30		
UNITS: 31		
UNITS: 32		
UNITS: 33		
UNITS: 34		
UNITS: 35		
UNITS: 36		
UNITS: 37		
UNITS: 38		
UNITS: 39		
UNITS: 40		
UNITS: 41		
UNITS: 42		
UNITS: 43		
UNITS: 44		
UNITS: 45		
UNITS: 46		
UNITS: 47		
UNITS: 48		
UNITS: 49		
UNITS: 50		
UNITS: 51		
UNITS: 52		
UNITS: 53		
UNITS: 54		
UNITS: 55		
UNITS: 56		
UNITS: 57		
UNITS: 58		
UNITS: 59		
UNITS: 60		
UNITS: 61		
UNITS: 62		
UNITS: 63		
UNITS: 64		
UNITS: 65		
UNITS: 66		
UNITS: 67		
UNITS: 68		
UNITS: 69		
UNITS: 70		
UNITS: 71		
UNITS: 72		
UNITS: 73		
UNITS: 74		
UNITS: 75		
UNITS: 76		
UNITS: 77		
UNITS: 78		
UNITS: 79		
UNITS: 80		
UNITS: 81		
UNITS: 82		
UNITS: 83		
UNITS: 84		
UNITS: 85		
UNITS: 86		
UNITS: 87		
UNITS: 88		
UNITS: 89		
UNITS: 90		
UNITS: 91		
UNITS: 92		
UNITS: 93		
UNITS: 94		
UNITS: 95		
UNITS: 96		
UNITS: 97		
UNITS: 98		
UNITS: 99		
UNITS: 100		

BOWDOINHAM
PLANNING STUDY
GENERAL PLANS

SHEET NUMBER
4
OF 15

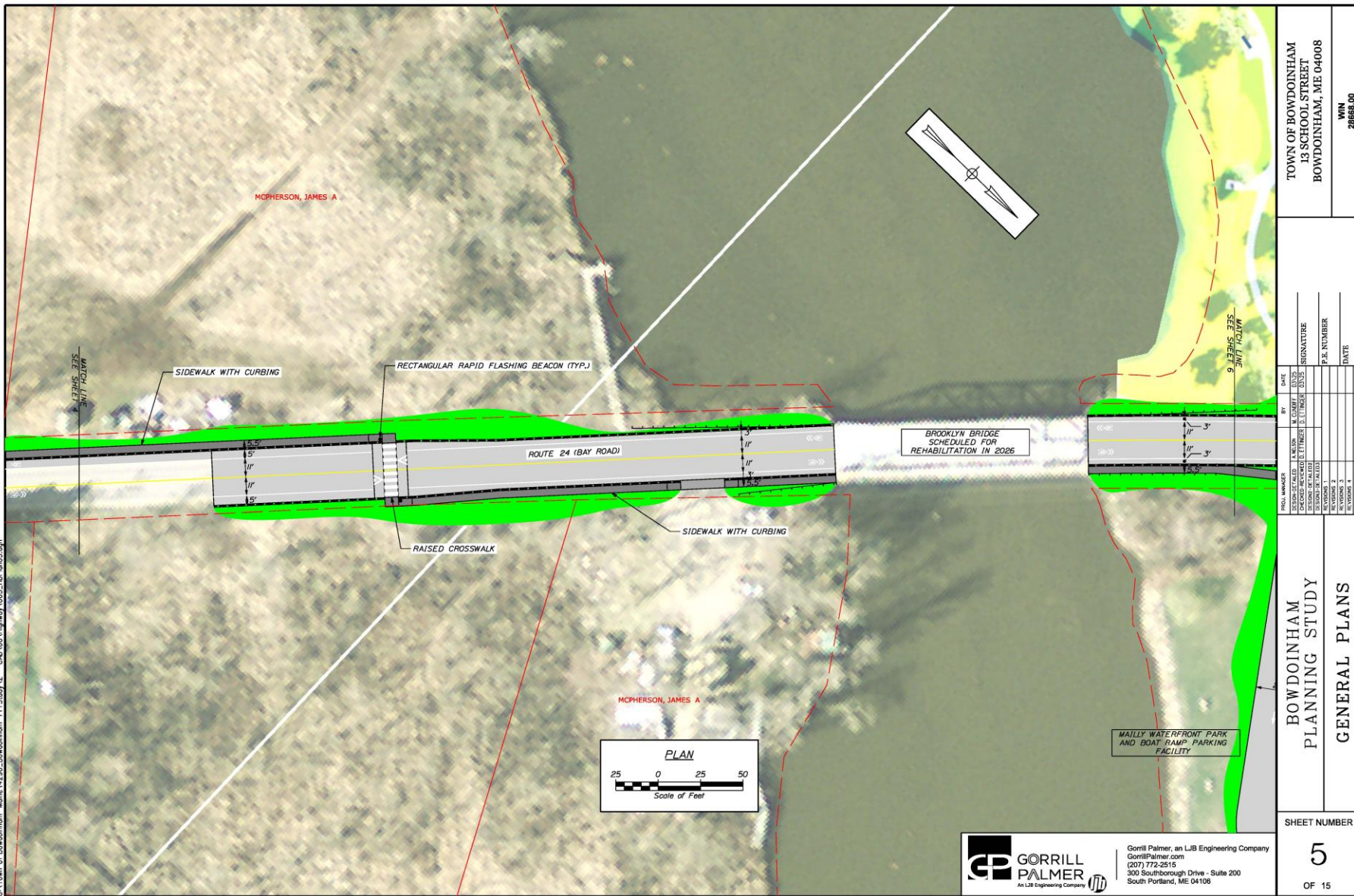
GORRILL PALMER
An LJB Engineering Company

Gorrill Palmer, an LJB Engineering Company
GorrillPalmer.com
(207) 772-2515
300 Southborough Drive - Suite 200
South Portland, ME 04106

Concepts

- Safety Improvements
- Intersection Improvements
- Pedestrian / Bike Accommodations
- Traffic Calming
- Access Management
- Parking Accommodations
- Pedestrian Connectivity
- Placemaking Opportunities

U:\Town of Bowdoinham - Maine\1790 - Bowdoinham - PR Study\2 - CAD\00\Highway\005 - HP\Plan03.dgn
 Filname: ...00\Highway\005 - HP\Plan03.dgn
 Division: HIGHWAY
 Username: Mike.Curdiff
 Date: 3/20/2025



TOWN OF BOWDOINHAM 13 SCHOOL STREET BOWDOINHAM, ME 04008		WIN 28668.00
DATE	BY	REVISIONS
03/20/25	M. GORRILL	1. INITIAL DESIGN
	D. LINDSEY	2. REVISIONS TO PLAN
		3. REVISIONS TO PLAN
		4. REVISIONS TO PLAN
		5. REVISIONS TO PLAN
		6. REVISIONS TO PLAN
		7. REVISIONS TO PLAN
		8. REVISIONS TO PLAN
		9. REVISIONS TO PLAN
		10. REVISIONS TO PLAN
		11. REVISIONS TO PLAN
		12. REVISIONS TO PLAN
		13. REVISIONS TO PLAN
		14. REVISIONS TO PLAN
		15. REVISIONS TO PLAN
		16. REVISIONS TO PLAN
		17. REVISIONS TO PLAN
		18. REVISIONS TO PLAN
		19. REVISIONS TO PLAN
		20. REVISIONS TO PLAN
		21. REVISIONS TO PLAN
		22. REVISIONS TO PLAN
		23. REVISIONS TO PLAN
		24. REVISIONS TO PLAN
		25. REVISIONS TO PLAN
		26. REVISIONS TO PLAN
		27. REVISIONS TO PLAN
		28. REVISIONS TO PLAN
		29. REVISIONS TO PLAN
		30. REVISIONS TO PLAN
		31. REVISIONS TO PLAN
		32. REVISIONS TO PLAN
		33. REVISIONS TO PLAN
		34. REVISIONS TO PLAN
		35. REVISIONS TO PLAN
		36. REVISIONS TO PLAN
		37. REVISIONS TO PLAN
		38. REVISIONS TO PLAN
		39. REVISIONS TO PLAN
		40. REVISIONS TO PLAN
		41. REVISIONS TO PLAN
		42. REVISIONS TO PLAN
		43. REVISIONS TO PLAN
		44. REVISIONS TO PLAN
		45. REVISIONS TO PLAN
		46. REVISIONS TO PLAN
		47. REVISIONS TO PLAN
		48. REVISIONS TO PLAN
		49. REVISIONS TO PLAN
		50. REVISIONS TO PLAN
		51. REVISIONS TO PLAN
		52. REVISIONS TO PLAN
		53. REVISIONS TO PLAN
		54. REVISIONS TO PLAN
		55. REVISIONS TO PLAN
		56. REVISIONS TO PLAN
		57. REVISIONS TO PLAN
		58. REVISIONS TO PLAN
		59. REVISIONS TO PLAN
		60. REVISIONS TO PLAN
		61. REVISIONS TO PLAN
		62. REVISIONS TO PLAN
		63. REVISIONS TO PLAN
		64. REVISIONS TO PLAN
		65. REVISIONS TO PLAN
		66. REVISIONS TO PLAN
		67. REVISIONS TO PLAN
		68. REVISIONS TO PLAN
		69. REVISIONS TO PLAN
		70. REVISIONS TO PLAN
		71. REVISIONS TO PLAN
		72. REVISIONS TO PLAN
		73. REVISIONS TO PLAN
		74. REVISIONS TO PLAN
		75. REVISIONS TO PLAN
		76. REVISIONS TO PLAN
		77. REVISIONS TO PLAN
		78. REVISIONS TO PLAN
		79. REVISIONS TO PLAN
		80. REVISIONS TO PLAN
		81. REVISIONS TO PLAN
		82. REVISIONS TO PLAN
		83. REVISIONS TO PLAN
		84. REVISIONS TO PLAN
		85. REVISIONS TO PLAN
		86. REVISIONS TO PLAN
		87. REVISIONS TO PLAN
		88. REVISIONS TO PLAN
		89. REVISIONS TO PLAN
		90. REVISIONS TO PLAN
		91. REVISIONS TO PLAN
		92. REVISIONS TO PLAN
		93. REVISIONS TO PLAN
		94. REVISIONS TO PLAN
		95. REVISIONS TO PLAN
		96. REVISIONS TO PLAN
		97. REVISIONS TO PLAN
		98. REVISIONS TO PLAN
		99. REVISIONS TO PLAN
		100. REVISIONS TO PLAN

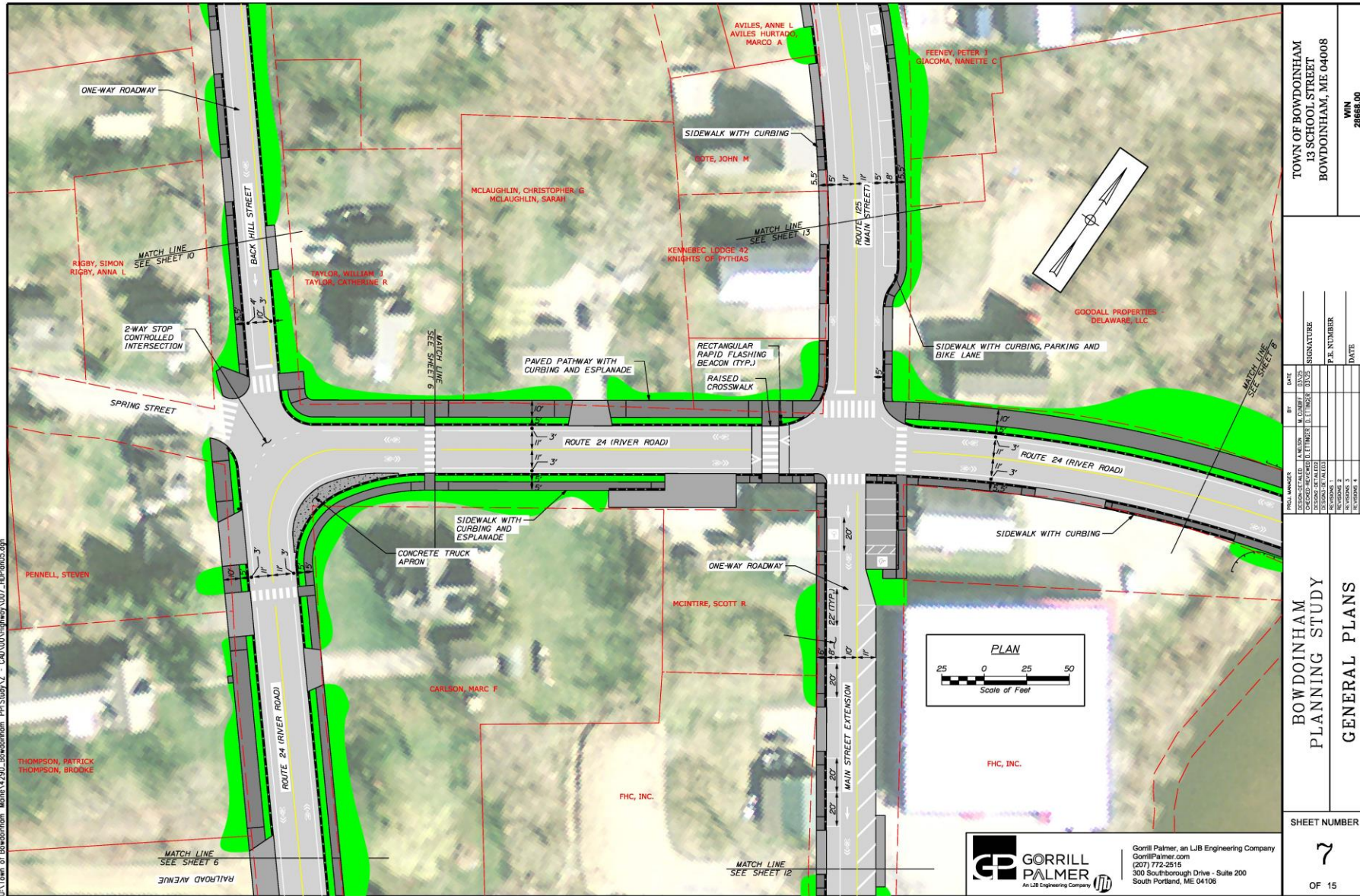
GORRILL PALMER
 An LJB Engineering Company

Gorrill Palmer, an LJB Engineering Company
 GorrillPalmer.com
 (207) 772-2515
 300 Southborough Drive - Suite 200
 South Portland, ME 04108

SHEET NUMBER
5
 OF 15

Concepts

- Safety Improvements
- Intersection Improvements
- Pedestrian / Bike Accommodations
- Traffic Calming
- Access Management
- Parking Accommodations
- Pedestrian Connectivity
- Placemaking Opportunities

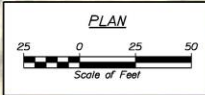


TOWN OF BOWDOINHAM 13 SCHOOL STREET BOWDOINHAM, ME 04008		WIN 28668.00
NO. OF SHEETS	DATE	
DESIGNED BY	DATE	
CHECKED BY	DATE	
IN CHARGE	DATE	
PROJECT NO.	DATE	
REVISION 1	P.E. NUMBER	
REVISION 2	DATE	
REVISION 3		
REVISION 4		
REVISION 5		
REVISION 6		
REVISION 7		
REVISION 8		
REVISION 9		
REVISION 10		
REVISION 11		
REVISION 12		
REVISION 13		
REVISION 14		
REVISION 15		
REVISION 16		
REVISION 17		
REVISION 18		
REVISION 19		
REVISION 20		
REVISION 21		
REVISION 22		
REVISION 23		
REVISION 24		
REVISION 25		
REVISION 26		
REVISION 27		
REVISION 28		
REVISION 29		
REVISION 30		
REVISION 31		
REVISION 32		
REVISION 33		
REVISION 34		
REVISION 35		
REVISION 36		
REVISION 37		
REVISION 38		
REVISION 39		
REVISION 40		
REVISION 41		
REVISION 42		
REVISION 43		
REVISION 44		
REVISION 45		
REVISION 46		
REVISION 47		
REVISION 48		
REVISION 49		
REVISION 50		
REVISION 51		
REVISION 52		
REVISION 53		
REVISION 54		
REVISION 55		
REVISION 56		
REVISION 57		
REVISION 58		
REVISION 59		
REVISION 60		
REVISION 61		
REVISION 62		
REVISION 63		
REVISION 64		
REVISION 65		
REVISION 66		
REVISION 67		
REVISION 68		
REVISION 69		
REVISION 70		
REVISION 71		
REVISION 72		
REVISION 73		
REVISION 74		
REVISION 75		
REVISION 76		
REVISION 77		
REVISION 78		
REVISION 79		
REVISION 80		
REVISION 81		
REVISION 82		
REVISION 83		
REVISION 84		
REVISION 85		
REVISION 86		
REVISION 87		
REVISION 88		
REVISION 89		
REVISION 90		
REVISION 91		
REVISION 92		
REVISION 93		
REVISION 94		
REVISION 95		
REVISION 96		
REVISION 97		
REVISION 98		
REVISION 99		
REVISION 100		

Concepts

- Safety Improvements
- Intersection Improvements
- Pedestrian / Bike Accommodations
- Traffic Calming
- Access Management
- Parking Accommodations
- Pedestrian Connectivity
- Placemaking Opportunities

Filename: ...:\00\Highway\08...HDP\08.dgn
 Division: HIGHWAY
 Username: Mike.Cundiff
 Date: 3/20/2025



TOWN OF BOWDOINHAM 13 SCHOOL STREET BOWDOINHAM, ME 04008		WIN 28668.00	
NO. DATE	BY DATE	SIGNATURE	DATE
DESIGNED: J. NELSON	DESIGNED: J. NELSON		
CHECKED: M. WARD	CHECKED: M. WARD		
DRAWN: D. LINDSEY	DRAWN: D. LINDSEY		
REVISION 1	REVISION 1		
REVISION 2	REVISION 2		
REVISION 3	REVISION 3		
REVISION 4	REVISION 4		
REVISION 5	REVISION 5		
REVISION 6	REVISION 6		
REVISION 7	REVISION 7		
REVISION 8	REVISION 8		
REVISION 9	REVISION 9		
REVISION 10	REVISION 10		

BOWDOINHAM
PLANNING STUDY
GENERAL PLANS

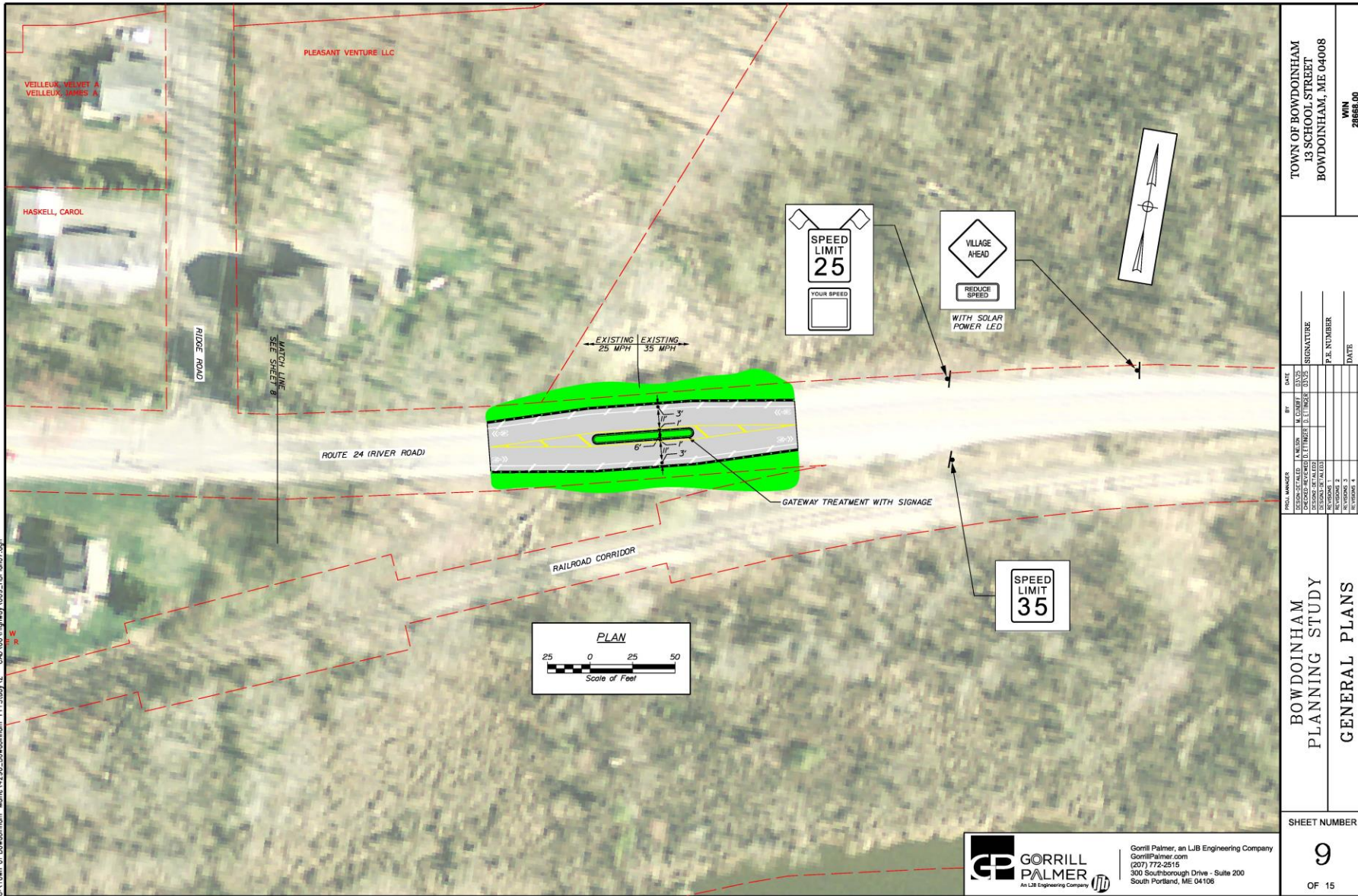
SHEET NUMBER
8
OF 15

GORRILL PALMER
An LJB Engineering Company

Gorrill Palmer, an LJB Engineering Company
GorrillPalmer.com
(207) 772-2515
300 Southborough Drive - Suite 200
South Portland, ME 04106

Concepts

- Safety Improvements
- Intersection Improvements
- Pedestrian / Bike Accommodations
- Traffic Calming
- Access Management
- Parking Accommodations
- Pedestrian Connectivity
- Placemaking Opportunities

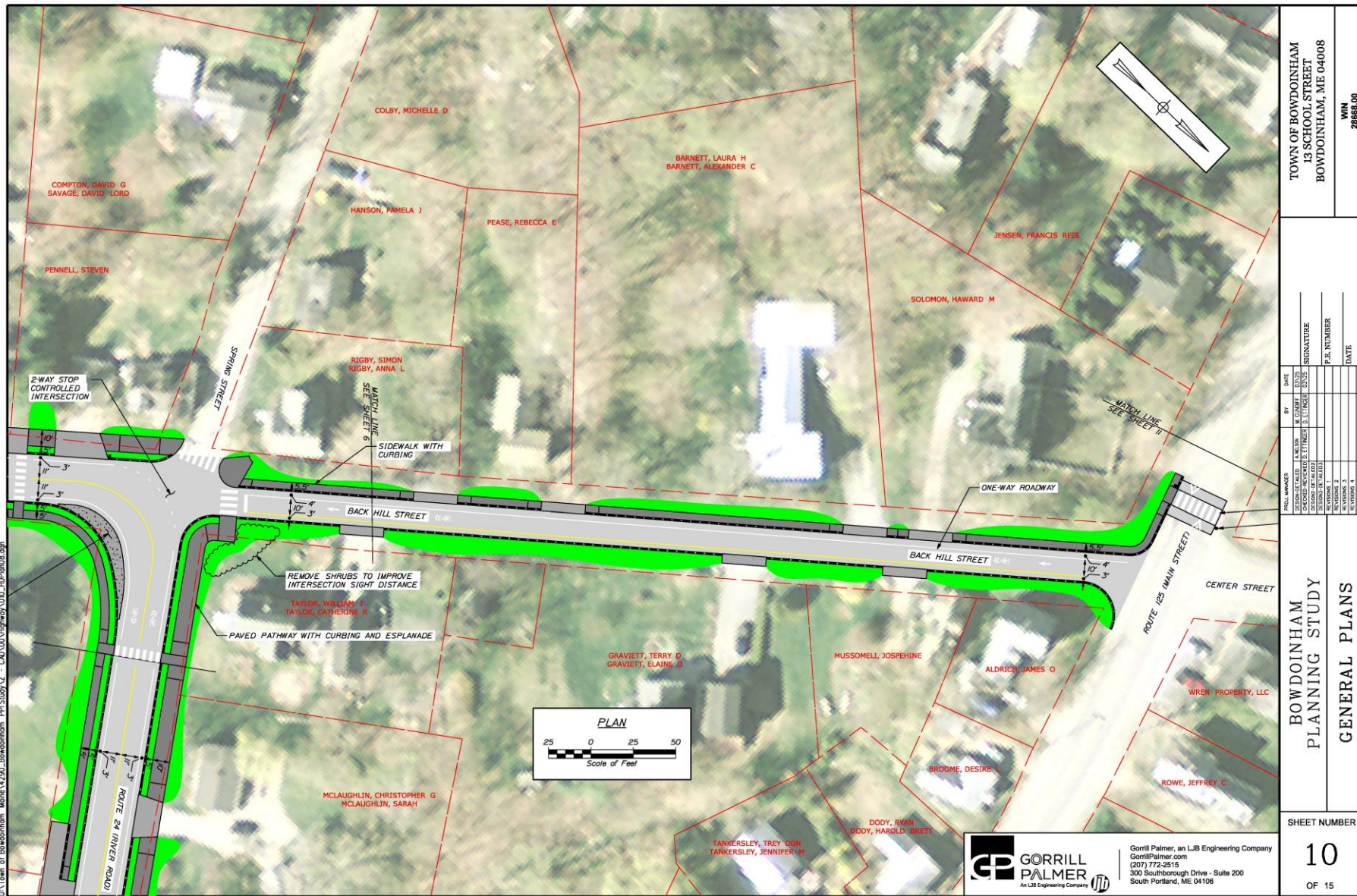


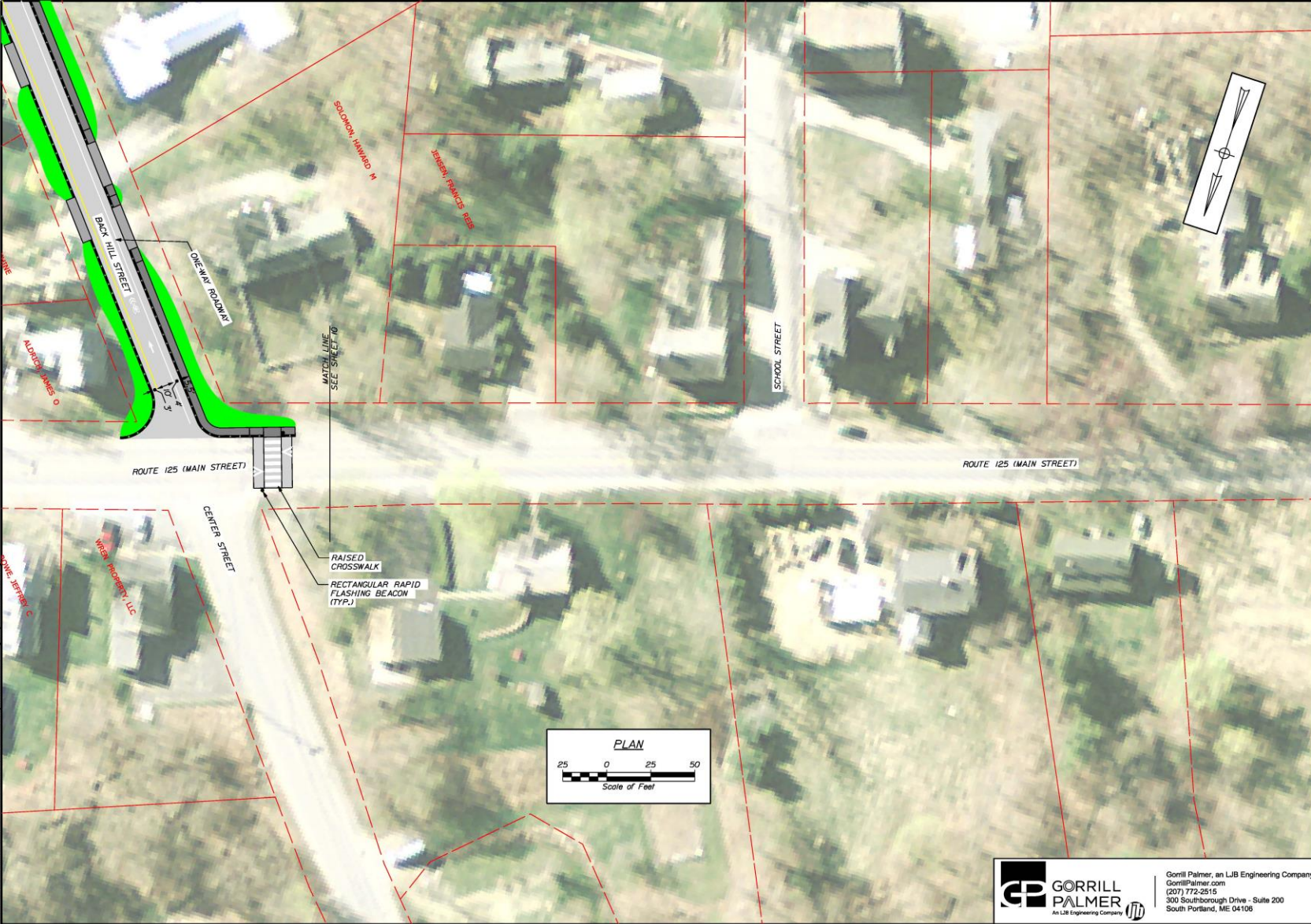
Concepts

- Safety Improvements
- Intersection Improvements
- Pedestrian / Bike Accommodations
- Traffic Calming
- Access Management
- Parking Accommodations
- Pedestrian Connectivity
- Placemaking Opportunities

Concepts

- Safety Improvements
- Intersection Improvements
- Pedestrian / Bike Accommodations
- Traffic Calming
- Access Management
- Parking Accommodations
- Pedestrian Connectivity
- Placemaking Opportunities





TOWN OF BOWDOINHAM 13 SCHOOL STREET BOWDOINHAM, ME 04008		WIN 28668.00	
DESIGNED BY	DATE	SIGNATURE	DATE
CHECKED BY			
APPROVED BY			
REVISION 1			
REVISION 2			
REVISION 3			
REVISION 4			
REVISION 5			
REVISION 6			
REVISION 7			
REVISION 8			
REVISION 9			
REVISION 10			
REVISION 11			
REVISION 12			
REVISION 13			
REVISION 14			
REVISION 15			
REVISION 16			
REVISION 17			
REVISION 18			
REVISION 19			
REVISION 20			
REVISION 21			
REVISION 22			
REVISION 23			
REVISION 24			
REVISION 25			
REVISION 26			
REVISION 27			
REVISION 28			
REVISION 29			
REVISION 30			
REVISION 31			
REVISION 32			
REVISION 33			
REVISION 34			
REVISION 35			
REVISION 36			
REVISION 37			
REVISION 38			
REVISION 39			
REVISION 40			
REVISION 41			
REVISION 42			
REVISION 43			
REVISION 44			
REVISION 45			
REVISION 46			
REVISION 47			
REVISION 48			
REVISION 49			
REVISION 50			
REVISION 51			
REVISION 52			
REVISION 53			
REVISION 54			
REVISION 55			
REVISION 56			
REVISION 57			
REVISION 58			
REVISION 59			
REVISION 60			
REVISION 61			
REVISION 62			
REVISION 63			
REVISION 64			
REVISION 65			
REVISION 66			
REVISION 67			
REVISION 68			
REVISION 69			
REVISION 70			
REVISION 71			
REVISION 72			
REVISION 73			
REVISION 74			
REVISION 75			
REVISION 76			
REVISION 77			
REVISION 78			
REVISION 79			
REVISION 80			
REVISION 81			
REVISION 82			
REVISION 83			
REVISION 84			
REVISION 85			
REVISION 86			
REVISION 87			
REVISION 88			
REVISION 89			
REVISION 90			
REVISION 91			
REVISION 92			
REVISION 93			
REVISION 94			
REVISION 95			
REVISION 96			
REVISION 97			
REVISION 98			
REVISION 99			
REVISION 100			

BOWDOINHAM
PLANNING STUDY
GENERAL PLANS

SHEET NUMBER
11
OF 15

GORRILL PALMER
An LJB Engineering Company

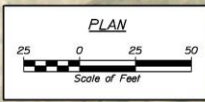
Gorrill Palmer, an LJB Engineering Company
GorrillPalmer.com
(207) 772-2515
300 Southborough Drive - Suite 200
South Portland, ME 04106

Concepts

- Safety Improvements
- Intersection Improvements
- Pedestrian / Bike Accommodations
- Traffic Calming
- Access Management
- Parking Accommodations
- Pedestrian Connectivity
- Placemaking Opportunities



TOWN OF BOWDOINHAM 13 SCHOOL STREET BOWDOINHAM, ME 04008		WIN 28668.00
NO. 1	DATE	SIGNATURE
NO. 2	DATE	P.E. NUMBER
NO. 3	DATE	DATE
NO. 4	DATE	DATE
NO. 5	DATE	DATE
NO. 6	DATE	DATE
NO. 7	DATE	DATE
NO. 8	DATE	DATE
NO. 9	DATE	DATE
NO. 10	DATE	DATE
NO. 11	DATE	DATE
NO. 12	DATE	DATE
NO. 13	DATE	DATE
NO. 14	DATE	DATE
NO. 15	DATE	DATE
NO. 16	DATE	DATE
NO. 17	DATE	DATE
NO. 18	DATE	DATE
NO. 19	DATE	DATE
NO. 20	DATE	DATE
NO. 21	DATE	DATE
NO. 22	DATE	DATE
NO. 23	DATE	DATE
NO. 24	DATE	DATE
NO. 25	DATE	DATE
NO. 26	DATE	DATE
NO. 27	DATE	DATE
NO. 28	DATE	DATE
NO. 29	DATE	DATE
NO. 30	DATE	DATE
NO. 31	DATE	DATE
NO. 32	DATE	DATE
NO. 33	DATE	DATE
NO. 34	DATE	DATE
NO. 35	DATE	DATE
NO. 36	DATE	DATE
NO. 37	DATE	DATE
NO. 38	DATE	DATE
NO. 39	DATE	DATE
NO. 40	DATE	DATE
NO. 41	DATE	DATE
NO. 42	DATE	DATE
NO. 43	DATE	DATE
NO. 44	DATE	DATE
NO. 45	DATE	DATE
NO. 46	DATE	DATE
NO. 47	DATE	DATE
NO. 48	DATE	DATE
NO. 49	DATE	DATE
NO. 50	DATE	DATE
NO. 51	DATE	DATE
NO. 52	DATE	DATE
NO. 53	DATE	DATE
NO. 54	DATE	DATE
NO. 55	DATE	DATE
NO. 56	DATE	DATE
NO. 57	DATE	DATE
NO. 58	DATE	DATE
NO. 59	DATE	DATE
NO. 60	DATE	DATE
NO. 61	DATE	DATE
NO. 62	DATE	DATE
NO. 63	DATE	DATE
NO. 64	DATE	DATE
NO. 65	DATE	DATE
NO. 66	DATE	DATE
NO. 67	DATE	DATE
NO. 68	DATE	DATE
NO. 69	DATE	DATE
NO. 70	DATE	DATE
NO. 71	DATE	DATE
NO. 72	DATE	DATE
NO. 73	DATE	DATE
NO. 74	DATE	DATE
NO. 75	DATE	DATE
NO. 76	DATE	DATE
NO. 77	DATE	DATE
NO. 78	DATE	DATE
NO. 79	DATE	DATE
NO. 80	DATE	DATE
NO. 81	DATE	DATE
NO. 82	DATE	DATE
NO. 83	DATE	DATE
NO. 84	DATE	DATE
NO. 85	DATE	DATE
NO. 86	DATE	DATE
NO. 87	DATE	DATE
NO. 88	DATE	DATE
NO. 89	DATE	DATE
NO. 90	DATE	DATE
NO. 91	DATE	DATE
NO. 92	DATE	DATE
NO. 93	DATE	DATE
NO. 94	DATE	DATE
NO. 95	DATE	DATE
NO. 96	DATE	DATE
NO. 97	DATE	DATE
NO. 98	DATE	DATE
NO. 99	DATE	DATE
NO. 100	DATE	DATE



GORRILL PALMER
An LJB Engineering Company

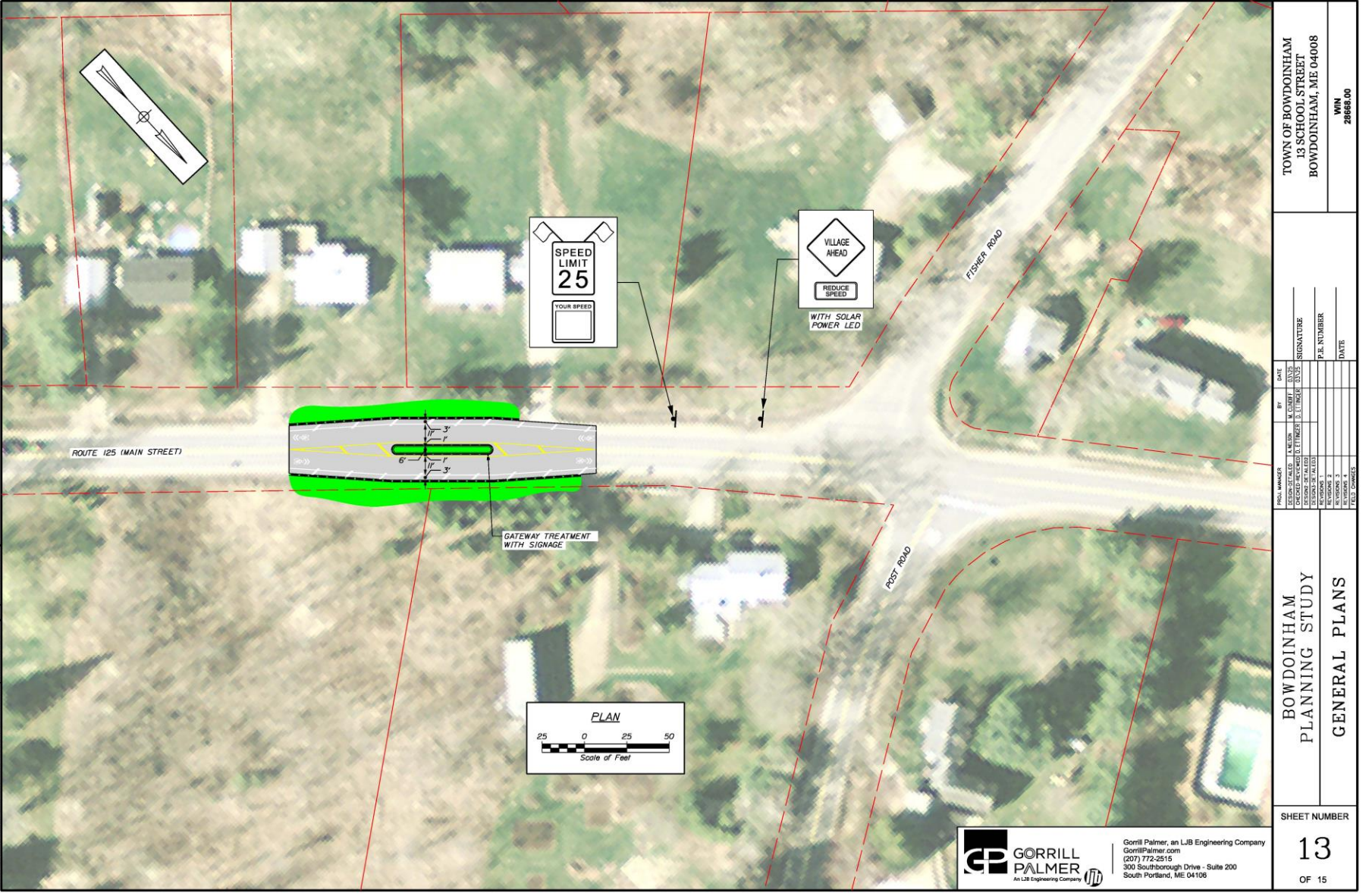
Gorrill Palmer, an LJB Engineering Company
GorrillPalmer.com
(207) 772-2515
300 Southborough Drive - Suite 200
South Portland, ME 04106

SHEET NUMBER
12
OF 15

Concepts

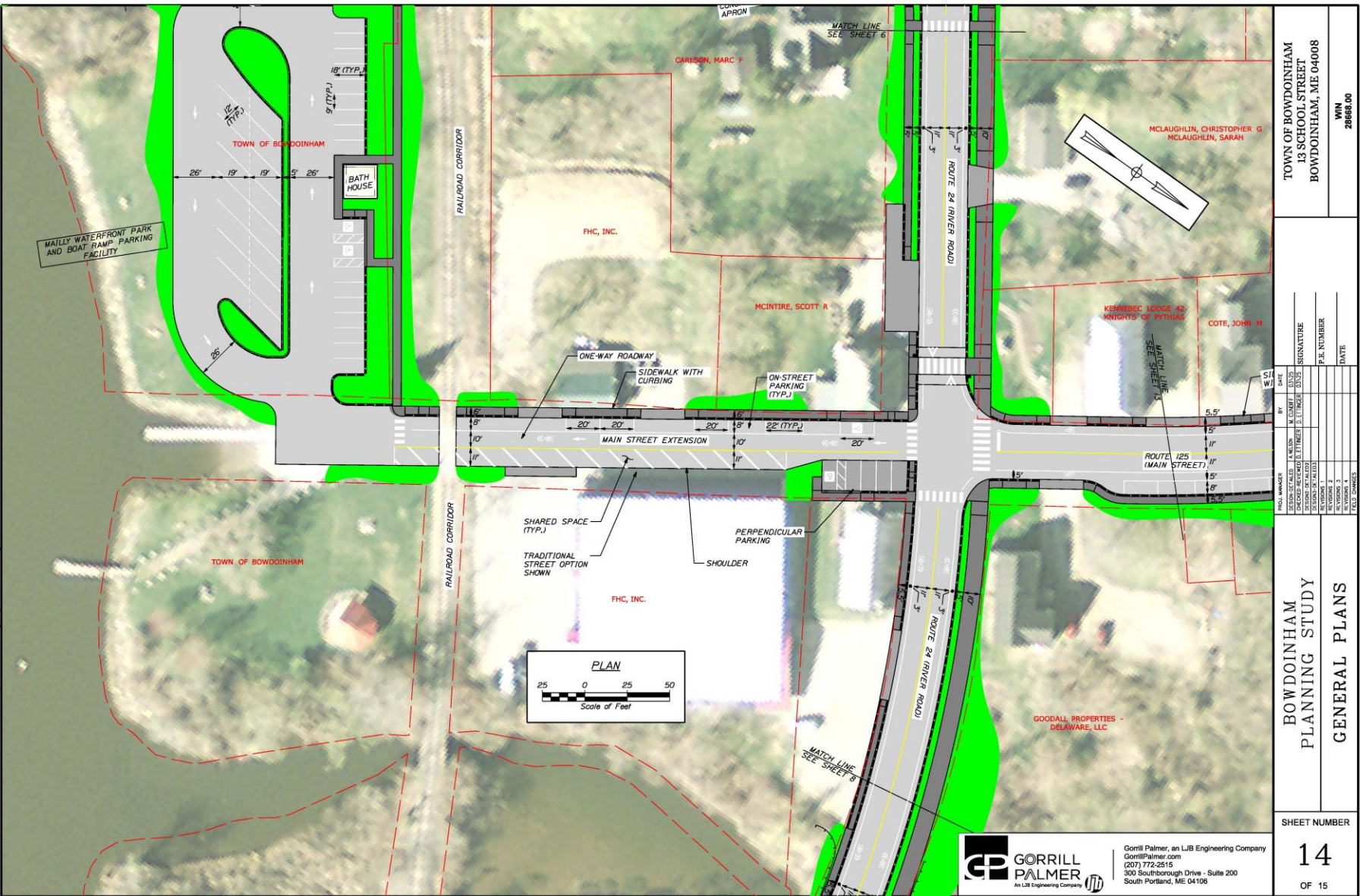
- Safety Improvements
- Intersection Improvements
- Pedestrian / Bike Accommodations
- Traffic Calming
- Access Management
- Parking Accommodations
- Pedestrian Connectivity
- Placemaking Opportunities

Username: Mike.Cundiff
 Date: 3/20/2025
 Division: HIGHWAY
 Filenome: ...000\Highway\013_RPPlan1.dgn
 U:\Town of Bowdoinham - Main\12590_Bowdoinham - PPS Study\2 - CAD\000\Highway\013_RPPlan1.dgn



TOWN OF BOWDOINHAM 13 SCHOOL STREET BOWDOINHAM, ME 04008		WIN 28668.00
DESIGNED BY: A. NELSON	CHECKED BY: M. CUNDIFF	DATE: 3/20/2025
DRAWN BY: D. LINDSEY	SCALE: AS SHOWN	SIGNATURE: _____
REVISIONS:	NO. 1	P.E. NUMBER: _____
NO. 2	NO. 3	DATE: _____
NO. 4	NO. 5	
NO. 6	NO. 7	
NO. 8	NO. 9	
NO. 10	NO. 11	
NO. 12	NO. 13	
NO. 14	NO. 15	
NO. 16	NO. 17	
NO. 18	NO. 19	
NO. 20	NO. 21	
NO. 22	NO. 23	
NO. 24	NO. 25	
NO. 26	NO. 27	
NO. 28	NO. 29	
NO. 30	NO. 31	
NO. 32	NO. 33	
NO. 34	NO. 35	
NO. 36	NO. 37	
NO. 38	NO. 39	
NO. 40	NO. 41	
NO. 42	NO. 43	
NO. 44	NO. 45	
NO. 46	NO. 47	
NO. 48	NO. 49	
NO. 50	NO. 51	
NO. 52	NO. 53	
NO. 54	NO. 55	
NO. 56	NO. 57	
NO. 58	NO. 59	
NO. 60	NO. 61	
NO. 62	NO. 63	
NO. 64	NO. 65	
NO. 66	NO. 67	
NO. 68	NO. 69	
NO. 70	NO. 71	
NO. 72	NO. 73	
NO. 74	NO. 75	
NO. 76	NO. 77	
NO. 78	NO. 79	
NO. 80	NO. 81	
NO. 82	NO. 83	
NO. 84	NO. 85	
NO. 86	NO. 87	
NO. 88	NO. 89	
NO. 90	NO. 91	
NO. 92	NO. 93	
NO. 94	NO. 95	
NO. 96	NO. 97	
NO. 98	NO. 99	
NO. 100	NO. 101	
NO. 102	NO. 103	
NO. 104	NO. 105	
NO. 106	NO. 107	
NO. 108	NO. 109	
NO. 110	NO. 111	
NO. 112	NO. 113	
NO. 114	NO. 115	
NO. 116	NO. 117	
NO. 118	NO. 119	
NO. 120	NO. 121	
NO. 122	NO. 123	
NO. 124	NO. 125	
NO. 126	NO. 127	
NO. 128	NO. 129	
NO. 130	NO. 131	
NO. 132	NO. 133	
NO. 134	NO. 135	
NO. 136	NO. 137	
NO. 138	NO. 139	
NO. 140	NO. 141	
NO. 142	NO. 143	
NO. 144	NO. 145	
NO. 146	NO. 147	
NO. 148	NO. 149	
NO. 150	NO. 151	
NO. 152	NO. 153	
NO. 154	NO. 155	
NO. 156	NO. 157	
NO. 158	NO. 159	
NO. 160	NO. 161	
NO. 162	NO. 163	
NO. 164	NO. 165	
NO. 166	NO. 167	
NO. 168	NO. 169	
NO. 170	NO. 171	
NO. 172	NO. 173	
NO. 174	NO. 175	
NO. 176	NO. 177	
NO. 178	NO. 179	
NO. 180	NO. 181	
NO. 182	NO. 183	
NO. 184	NO. 185	
NO. 186	NO. 187	
NO. 188	NO. 189	
NO. 190	NO. 191	
NO. 192	NO. 193	
NO. 194	NO. 195	
NO. 196	NO. 197	
NO. 198	NO. 199	
NO. 200	NO. 201	
NO. 202	NO. 203	
NO. 204	NO. 205	
NO. 206	NO. 207	
NO. 208	NO. 209	
NO. 210	NO. 211	
NO. 212	NO. 213	
NO. 214	NO. 215	
NO. 216	NO. 217	
NO. 218	NO. 219	
NO. 220	NO. 221	
NO. 222	NO. 223	
NO. 224	NO. 225	
NO. 226	NO. 227	
NO. 228	NO. 229	
NO. 230	NO. 231	
NO. 232	NO. 233	
NO. 234	NO. 235	
NO. 236	NO. 237	
NO. 238	NO. 239	
NO. 240	NO. 241	
NO. 242	NO. 243	
NO. 244	NO. 245	
NO. 246	NO. 247	
NO. 248	NO. 249	
NO. 250	NO. 251	
NO. 252	NO. 253	
NO. 254	NO. 255	
NO. 256	NO. 257	
NO. 258	NO. 259	
NO. 260	NO. 261	
NO. 262	NO. 263	
NO. 264	NO. 265	
NO. 266	NO. 267	
NO. 268	NO. 269	
NO. 270	NO. 271	
NO. 272	NO. 273	
NO. 274	NO. 275	
NO. 276	NO. 277	
NO. 278	NO. 279	
NO. 280	NO. 281	
NO. 282	NO. 283	
NO. 284	NO. 285	
NO. 286	NO. 287	
NO. 288	NO. 289	
NO. 290	NO. 291	
NO. 292	NO. 293	
NO. 294	NO. 295	
NO. 296	NO. 297	
NO. 298	NO. 299	
NO. 300	NO. 301	
NO. 302	NO. 303	
NO. 304	NO. 305	
NO. 306	NO. 307	
NO. 308	NO. 309	
NO. 310	NO. 311	
NO. 312	NO. 313	
NO. 314	NO. 315	
NO. 316	NO. 317	
NO. 318	NO. 319	
NO. 320	NO. 321	
NO. 322	NO. 323	
NO. 324	NO. 325	
NO. 326	NO. 327	
NO. 328	NO. 329	
NO. 330	NO. 331	
NO. 332	NO. 333	
NO. 334	NO. 335	
NO. 336	NO. 337	
NO. 338	NO. 339	
NO. 340	NO. 341	
NO. 342	NO. 343	
NO. 344	NO. 345	
NO. 346	NO. 347	
NO. 348	NO. 349	
NO. 350	NO. 351	
NO. 352	NO. 353	
NO. 354	NO. 355	
NO. 356	NO. 357	
NO. 358	NO. 359	
NO. 360	NO. 361	
NO. 362	NO. 363	
NO. 364	NO. 365	
NO. 366	NO. 367	
NO. 368	NO. 369	
NO. 370	NO. 371	
NO. 372	NO. 373	
NO. 374	NO. 375	
NO. 376	NO. 377	
NO. 378	NO. 379	
NO. 380	NO. 381	
NO. 382	NO. 383	
NO. 384	NO. 385	
NO. 386	NO. 387	
NO. 388	NO. 389	
NO. 390	NO. 391	
NO. 392	NO. 393	
NO. 394	NO. 395	
NO. 396	NO. 397	
NO. 398	NO. 399	
NO. 400	NO. 401	
NO. 402	NO. 403	
NO. 404	NO. 405	
NO. 406	NO. 407	
NO. 408	NO. 409	
NO. 410	NO. 411	
NO. 412	NO. 413	
NO. 414	NO. 415	
NO. 416	NO. 417	
NO. 418	NO. 419	
NO. 420	NO. 421	
NO. 422	NO. 423	
NO. 424	NO. 425	
NO. 426	NO. 427	
NO. 428	NO. 429	
NO. 430	NO. 431	
NO. 432	NO. 433	
NO. 434	NO. 435	
NO. 436	NO. 437	
NO. 438	NO. 439	
NO. 440	NO. 441	
NO. 442	NO. 443	
NO. 444	NO. 445	
NO. 446	NO. 447	
NO. 448	NO. 449	
NO. 450	NO. 451	
NO. 452	NO. 453	
NO. 454	NO. 455	
NO. 456	NO. 457	
NO. 458	NO. 459	
NO. 460	NO. 461	
NO. 462	NO. 463	
NO. 464	NO. 465	
NO. 466	NO. 467	
NO. 468	NO. 469	
NO. 470	NO. 471	
NO. 472	NO. 473	
NO. 474	NO. 475	
NO. 476	NO. 477	
NO. 478	NO. 479	
NO. 480	NO. 481	
NO. 482	NO. 483	
NO. 484	NO. 485	
NO. 486	NO. 487	
NO. 488	NO. 489	
NO. 490	NO. 491	
NO. 492	NO. 493	
NO. 494	NO. 495	
NO. 496	NO. 497	
NO. 498	NO. 499	
NO. 500	NO. 501	
NO. 502	NO. 503	
NO. 504	NO. 505	
NO. 506	NO. 507	
NO. 508	NO. 509	
NO. 510	NO. 511	
NO. 512	NO. 513	
NO. 514	NO. 515	
NO. 516	NO. 517	
NO. 518	NO. 519	
NO. 520	NO. 521	
NO. 522	NO. 523	
NO. 524	NO. 525	
NO. 526	NO. 527	
NO. 528	NO. 529	
NO. 530	NO. 531	
NO. 532	NO. 533	
NO. 534	NO. 535	
NO. 536	NO. 537	
NO. 538	NO. 539	
NO. 540	NO. 541	
NO. 542	NO. 543	
NO. 544	NO. 545	
NO. 546	NO. 547	
NO. 548	NO. 549	
NO. 550	NO. 551	
NO. 552	NO. 553	
NO. 554	NO. 555	
NO. 556	NO. 557	
NO. 558	NO. 559	
NO. 560	NO. 561	
NO. 562	NO. 563	
NO. 564	NO. 565	
NO. 566	NO. 567	
NO. 568	NO. 569	
NO. 570	NO. 571	
NO. 572	NO. 573	
NO. 574	NO. 575	
NO. 576	NO. 577	
NO. 578	NO. 579	
NO. 580	NO. 581	
NO. 582	NO. 583	
NO. 584	NO. 585	
NO. 586	NO. 587	
NO. 588	NO. 589	
NO. 590	NO. 591	
NO. 592	NO. 593	
NO. 594	NO. 595	
NO. 596	NO. 597	
NO. 598	NO. 599	
NO. 600	NO. 601	
NO. 602	NO. 603	
NO. 604	NO. 605	
NO. 606	NO. 607	
NO. 608	NO. 609	
NO. 610	NO. 611	
NO. 612	NO. 613	
NO. 614	NO. 615	
NO. 616	NO. 617	
NO. 618	NO. 619	
NO. 620	NO. 621	
NO. 622	NO. 623	
NO. 624	NO. 625	
NO. 626	NO. 627	
NO. 628	NO. 629	
NO. 630	NO. 631	
NO. 632	NO. 633	
NO. 634	NO. 635	
NO. 636	NO. 637	
NO. 638	NO. 639	
NO. 640	NO. 641	
NO. 642	NO. 643	
NO. 644	NO. 645	
NO. 646	NO. 647	
NO. 648	NO. 649	
NO. 650	NO. 651	
NO. 652	NO. 653	
NO. 654	NO. 655	
NO. 656	NO. 657	
NO. 658	NO. 659	
NO. 660	NO. 661	
NO. 662	NO. 663	
NO. 664	NO. 66	

Filename: ...:\00\Highway\014_HDPlan2.dgn
 Division: HIGHWAY
 Username: Mike.Curdiff
 Date: 3/20/2025



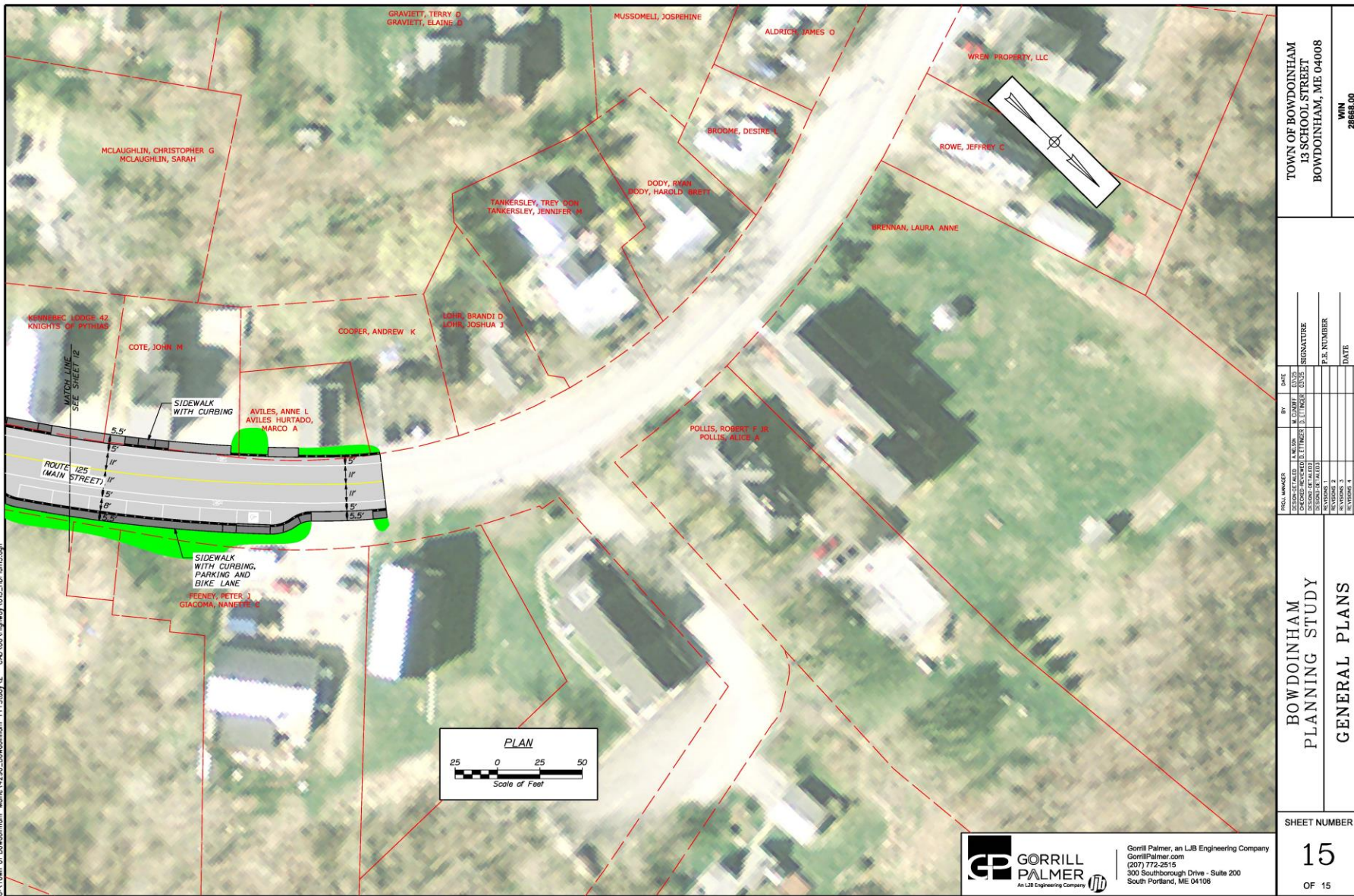
TOWN OF BOWDOINHAM 13 SCHOOL STREET BOWDOINHAM, ME 04008		WIN 28668.00
DESIGNED BY MICHAEL D. LINDSEY	CHECKED BY D. LINDSEY	DATE
DRAWN BY M. PALMER	SCALE	
PROJECT NO. 13	SHEET NO. 14	
GENERAL PLANS		
SHEET NUMBER		
14		
OF 15		

GORRILL PALMER
 An LJB Engineering Company

Gorrill Palmer, an LJB Engineering Company
 GorrillPalmer.com
 (207) 772-2515
 300 Southborough Drive - Suite 200
 South Portland, ME 04106

Concepts

- Safety Improvements
- Intersection Improvements
- Pedestrian / Bike Accommodations
- Traffic Calming
- Access Management
- Parking Accommodations
- Pedestrian Connectivity
- Placemaking Opportunities



TOWN OF BOWDOINHAM 13 SCHOOL STREET BOWDOINHAM, ME 04008		WIN 28668.00
NO. UNITS	BY	DATE
DESIGNED/REVISED	M. CHASE	03/20
CHECKED/REVISED	D. FINNEY	03/25
DATE	SIGNATURE	
REVISION 1		P.P. NUMBER
REVISION 2		DATE
REVISION 3		
REVISION 4		
REVISION 5		
REVISION 6		
REVISION 7		
REVISION 8		
REVISION 9		
REVISION 10		
REVISION 11		
REVISION 12		
REVISION 13		
REVISION 14		
REVISION 15		
REVISION 16		
REVISION 17		
REVISION 18		
REVISION 19		
REVISION 20		
REVISION 21		
REVISION 22		
REVISION 23		
REVISION 24		
REVISION 25		
REVISION 26		
REVISION 27		
REVISION 28		
REVISION 29		
REVISION 30		
REVISION 31		
REVISION 32		
REVISION 33		
REVISION 34		
REVISION 35		
REVISION 36		
REVISION 37		
REVISION 38		
REVISION 39		
REVISION 40		
REVISION 41		
REVISION 42		
REVISION 43		
REVISION 44		
REVISION 45		
REVISION 46		
REVISION 47		
REVISION 48		
REVISION 49		
REVISION 50		
REVISION 51		
REVISION 52		
REVISION 53		
REVISION 54		
REVISION 55		
REVISION 56		
REVISION 57		
REVISION 58		
REVISION 59		
REVISION 60		
REVISION 61		
REVISION 62		
REVISION 63		
REVISION 64		
REVISION 65		
REVISION 66		
REVISION 67		
REVISION 68		
REVISION 69		
REVISION 70		
REVISION 71		
REVISION 72		
REVISION 73		
REVISION 74		
REVISION 75		
REVISION 76		
REVISION 77		
REVISION 78		
REVISION 79		
REVISION 80		
REVISION 81		
REVISION 82		
REVISION 83		
REVISION 84		
REVISION 85		
REVISION 86		
REVISION 87		
REVISION 88		
REVISION 89		
REVISION 90		
REVISION 91		
REVISION 92		
REVISION 93		
REVISION 94		
REVISION 95		
REVISION 96		
REVISION 97		
REVISION 98		
REVISION 99		
REVISION 100		

BOWDOINHAM
PLANNING STUDY
GENERAL PLANS

SHEET NUMBER
15
OF 15

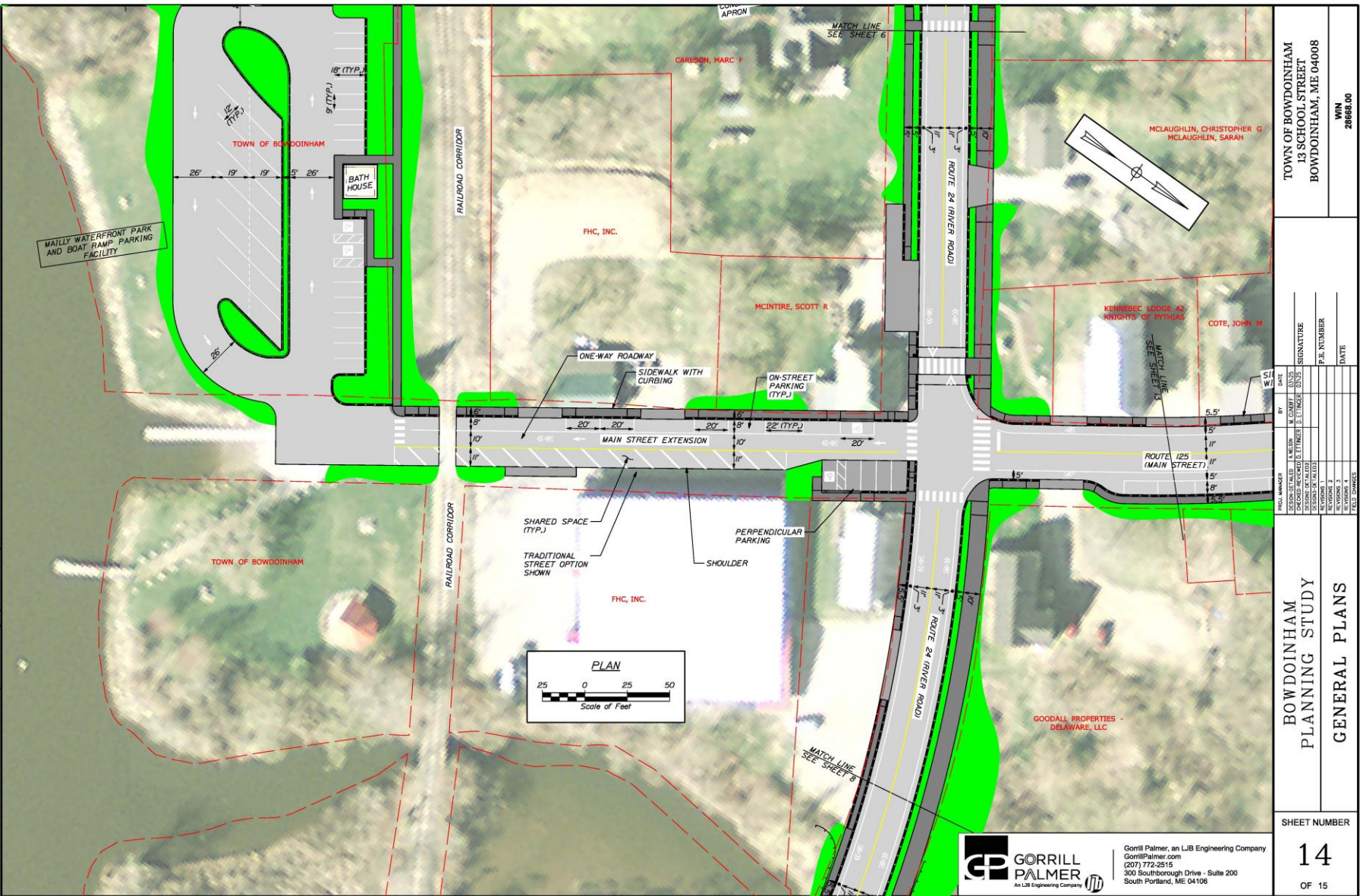
GORRILL PALMER
An LJB Engineering Company

Gorrill Palmer, an LJB Engineering Company
GorrillPalmer.com
(207) 772-2515
300 Southborough Drive - Suite 200
South Portland, ME 04106

Concepts

- Safety Improvements
- Intersection Improvements
- Pedestrian / Bike Accommodations
- Traffic Calming
- Access Management
- Parking Accommodations
- Pedestrian Connectivity
- Placemaking Opportunities

Date: 3/20/2025
 Username: Mike.Cundiff
 Division: HIGHWAY
 Filename: ...:\00\Highway\014_HDPlan02.dgn
 Division: HIGHWAY
 U:\Town of Bowdoinham - Main\1390_Bowdoinham - PR Study\2 - CAD\00\Highway\014_HDPlan02.dgn



TOWN OF BOWDOINHAM 13 SCHOOL STREET BOWDOINHAM, ME 04008 WIN 28668.00	
PROJECT NUMBER DESIGNER CHECKED BY DATE P.E. NUMBER DATE P.E. NUMBER DATE P.E. NUMBER DATE	SIGNATURE P.E. NUMBER DATE
BOWDOINHAM PLANNING STUDY GENERAL PLANS	
SHEET NUMBER 14 OF 15	

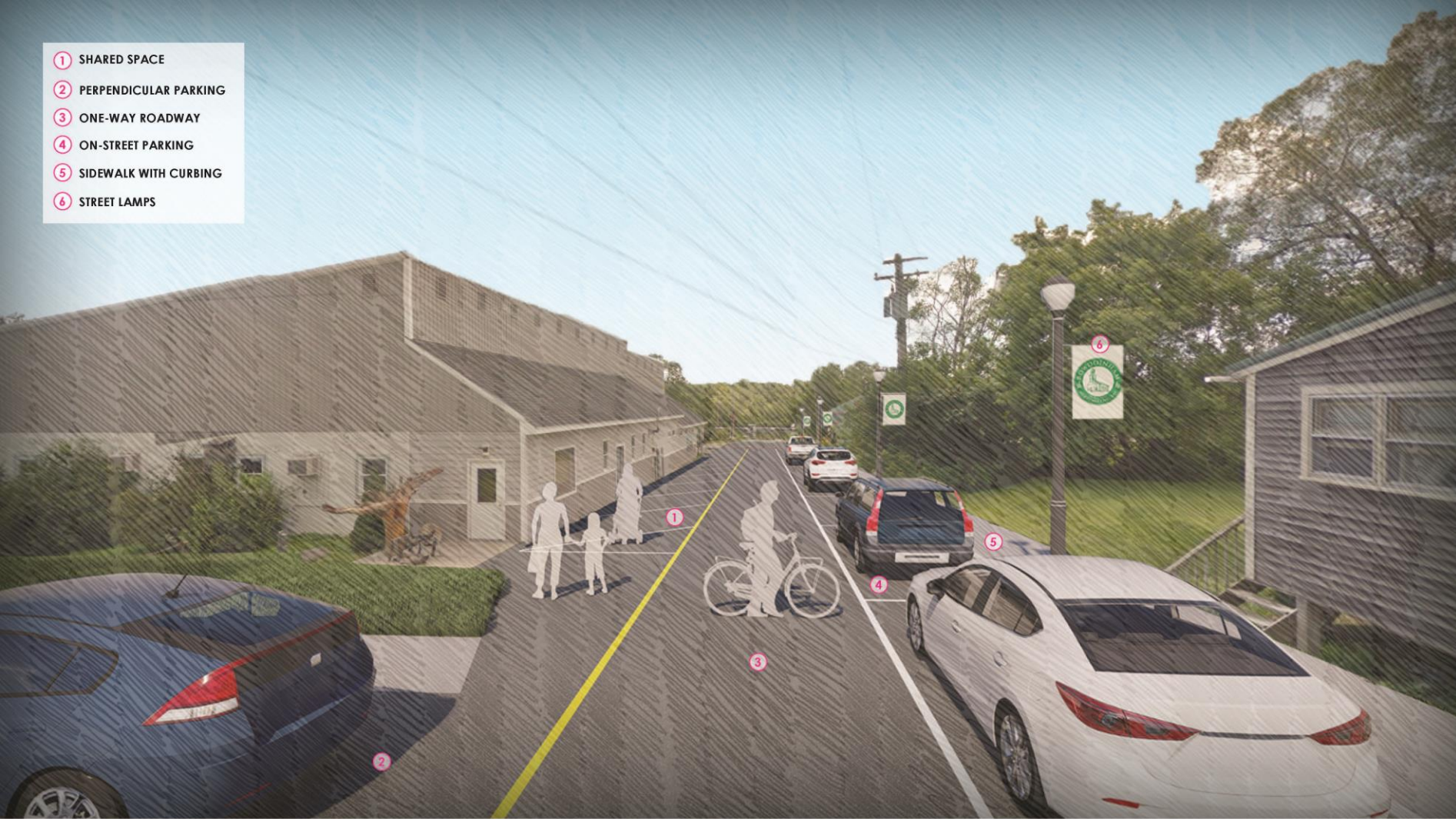
GORRILL PALMER
 An LJB Engineering Company

Gorrill Palmer, an LJB Engineering Company
 GorrillPalmer.com
 (207) 772-2515
 300 Southborough Drive - Suite 200
 South Portland, ME 04106

Concepts

- Main Street Ext.
- Option 1
- Traditional Street Layout

- ① SHARED SPACE
- ② PERPENDICULAR PARKING
- ③ ONE-WAY ROADWAY
- ④ ON-STREET PARKING
- ⑤ SIDEWALK WITH CURBING
- ⑥ STREET LAMPS



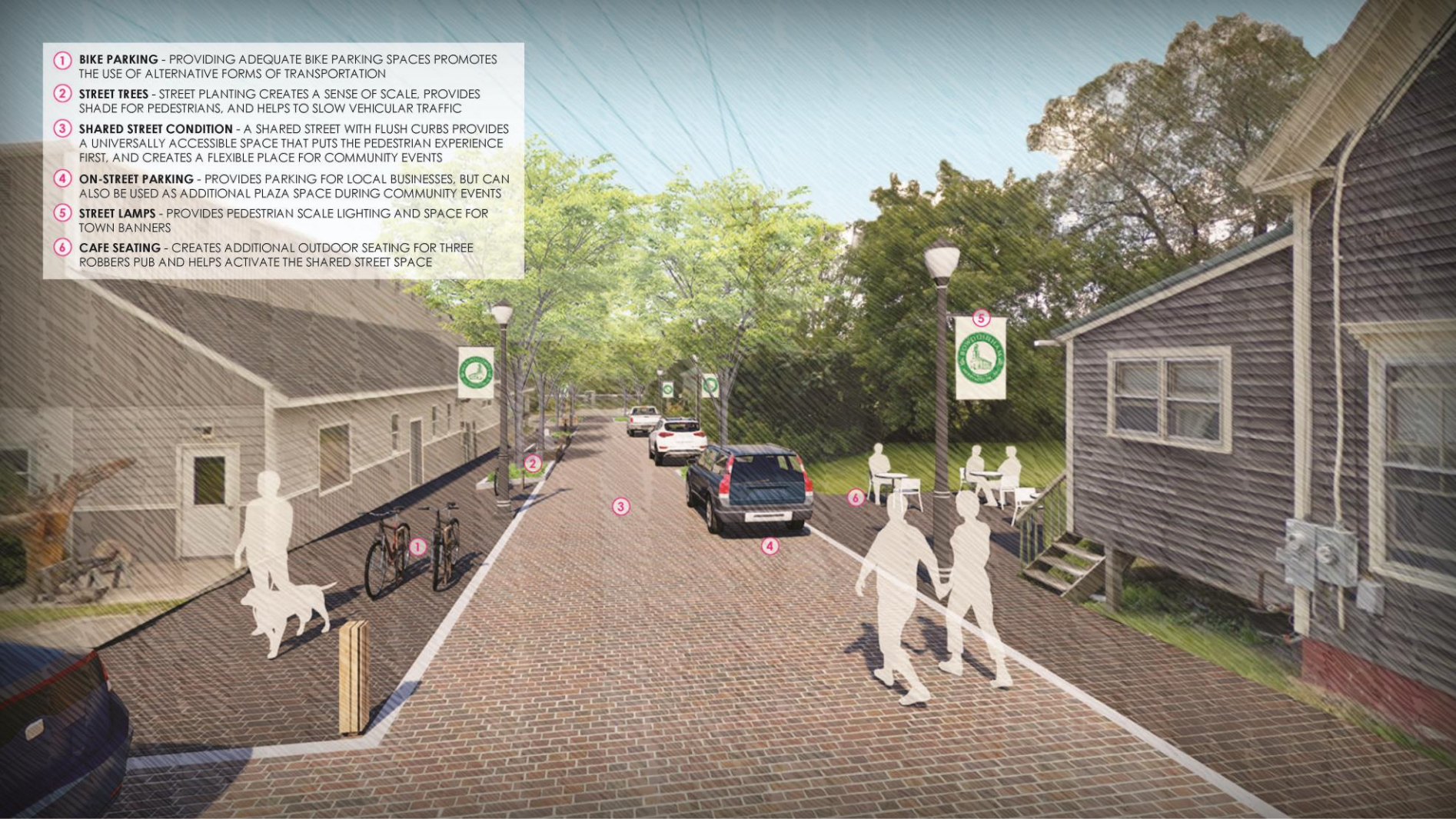
Concepts

- Main Street Ext.
- Option 1
- Traditional Street Layout

BOWDOINHAM VPI - MAIN ST EXT - PROPOSED TRADITIONAL STREET LOOKING SOUTH

ALA
ACETO LANDSCAPE ARCHITECTURE + URBAN DESIGN

- 1 **BIKE PARKING** - PROVIDING ADEQUATE BIKE PARKING SPACES PROMOTES THE USE OF ALTERNATIVE FORMS OF TRANSPORTATION
- 2 **STREET TREES** - STREET PLANTING CREATES A SENSE OF SCALE, PROVIDES SHADE FOR PEDESTRIANS, AND HELPS TO SLOW VEHICULAR TRAFFIC
- 3 **SHARED STREET CONDITION** - A SHARED STREET WITH FLUSH CURBS PROVIDES A UNIVERSALLY ACCESSIBLE SPACE THAT PUTS THE PEDESTRIAN EXPERIENCE FIRST, AND CREATES A FLEXIBLE PLACE FOR COMMUNITY EVENTS
- 4 **ON-STREET PARKING** - PROVIDES PARKING FOR LOCAL BUSINESSES, BUT CAN ALSO BE USED AS ADDITIONAL PLAZA SPACE DURING COMMUNITY EVENTS
- 5 **STREET LAMPS** - PROVIDES PEDESTRIAN SCALE LIGHTING AND SPACE FOR TOWN BANNERS
- 6 **CAFE SEATING** - CREATES ADDITIONAL OUTDOOR SEATING FOR THREE ROBBERS PUB AND HELPS ACTIVATE THE SHARED STREET SPACE



Concepts

- Main Street Ext.
- Option 2
- Shared Street Layout

BOWDOINHAM VPI - MAIN ST EXT - PROPOSED SHARED STREET LOOKING SOUTH

ALA
ACETO LANDSCAPE ARCHITECTURE + URBAN DESIGN

Concepts

- Main Street Ext.
- Option 2
- Shared Street Layout



Schedule

- Public Mtg 1 – October 15, 2024
- Online Survey – October 2024
- Concepts / Revisions / Recommendations – Winter 2024/25
- Public Mtg 2 – March 31, 2025
- Draft Report – April 2025
- Final Report – May 2025



Comments & Feedback

- Safety Improvements
- Traffic Calming
- Intersection Improvements
- Pedestrian / Bike Accommodations
- Parking / Access Management
- Main Street Extension
- Maily Waterfront Park
- Cathance River Boat Facility
- Placemaking Opportunities
- Other Items

