

MEMORANDUM

To: Bowdoinham Selectboard
From: Yvette Meunier, Dir. of Planning & Development
Date: January 29, 2026
Re: Recommendation for a Maine DOT All Way Stop Demonstration Application

Recommendation:

In response to limited visibility when approaching the Route 24 intersection from Lower Main Street—specifically when looking north, where sightlines are obstructed by the Masonic Lodge building. Staff is proposing to install a temporary all way stop controls. We recommend a motion to allow the Town to apply TIF money for this temporary project in the amount of \$1,319.50 will not entail any outlay of town money in order to launch the project as transportation is an approved use for the fund.

Background

Sightline impairment at the intersection of Lower Main Street and Route 24 has been an ongoing issue in the community. The town has invested in and deployed a speed feedback sign north of the intersection, but more needs to be done to make drivers feel safe navigating across Route 24 from Lower Main Street. The sightline impairment is caused by a permanent structure, the Masonic Lodge, located right up against Route 24.

With the kickoff of a multitude of summer events being hosted at the park, from weekly Saturday Farmers' Markets, the Summer Sundays Concert Series, Open Farm and Studio Day in July, the Tour de Bowdoinham charity ride in August, our annual Celebrate Bowdoinham weekend in September and a very busy food pantry, vehicle traffic to the park is at an all-time high making this is an opportune time to implement the project.

The town has hosted several site visits with Maine DOT staff to review options for this concern. During the 2025 VPI study the idea of turning Lower Main Street into a one-way as a solution for the issue was met with significant opposition specifically from the boating community where longer boats are physically limited to accessing the park only via Lower Main Street. Without being able to redirect traffic, an all way stop is being proposed.

Total project costs of \$1,319.50 are estimates based on initial discussions with Maine DOT on signage required and obtaining prices from our sign vendor. The proposal will be further reviewed by other Maine DOT staff which may require additional features. Please see the attached Maine DOT Demonstration Project Proposal for more details.

Bowdoinham Demonstration Project Proposal Temporary All Way Stop at Intersection of Main Street (Route 125) and River Road (Route 24)

1.28.26

Summary

In response to limited visibility when approaching the Route 24 intersection from Lower Main Street—specifically when looking north, where sightlines are obstructed by the Masonic Lodge building. The Town is proposing to install a temporary all way stop controls. These temporary measures would include:

- 6 Stop signs for doubled up placement at the intersection of Route 24 and Main Street;
- 3 Stop Ahead signs on new approaches;
- 3 New Traffic Pattern Ahead signs; and
- 6 All way stop placards.

The installations will seek to stop traffic in all directions, giving drivers the safest directive and piece of mind as they navigate this intersection during our busy spring and summer months. The project is temporary as we seek a permanent solution.

Purpose

The purpose of the project is to test the suitability of an all-way stop at this location to mitigate the safety risks associated with the sight-distance constraints that exist at this intersection. We will use this project to test the operation of an all-way stop, and gain feedback from the community on how it will be received and get input on how to improve upon a more permanent installation.

Need

Sightline impairment at the intersection of Lower Main Street and Route 24 has been an ongoing issue in the community. The town has invested in and deployed a speed feedback sign north of the intersection, but more needs to be done to make drivers feel safe navigating across Route 24 from Lower Main Street. The sightline impairment is caused by a permanent structure, the Masonic Lodge, located right up against Route 24.

With the kickoff of a multitude of summer events being hosted at the park, from weekly Saturday Farmers' Markets, the Summer Sundays Concert Series, Open Farm and Studio Day in July, the Tour de Bowdoinham charity ride in August, our annual Celebrate Bowdoinham weekend in September and a very busy food pantry, vehicle traffic to the park is at an all-time high making this is an opportune time to implement the project.

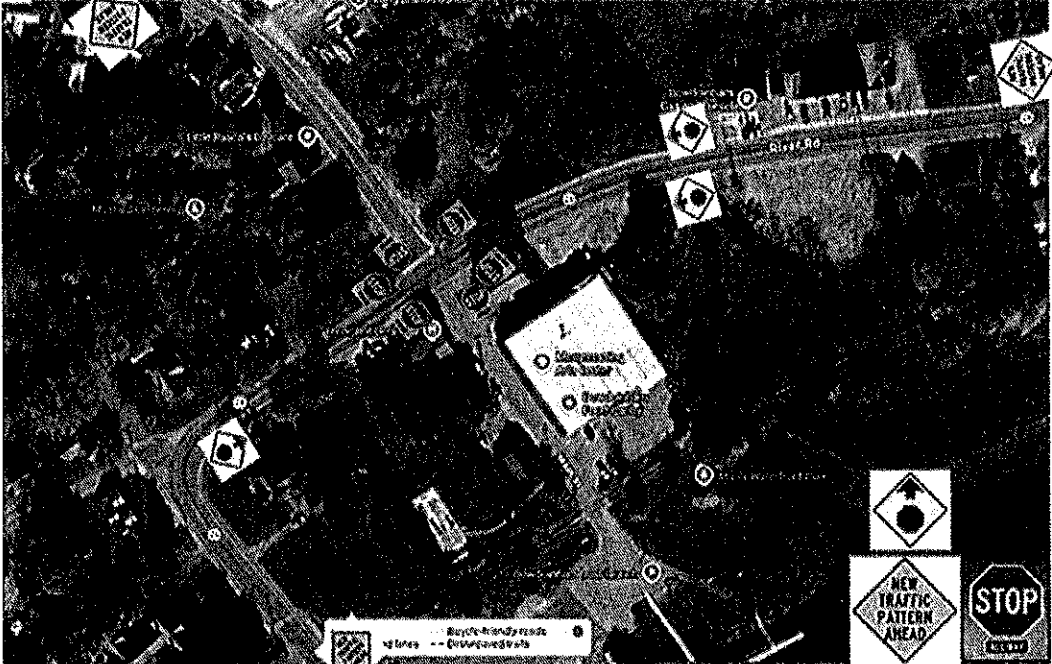
The town has hosted several site visits with Maine DOT staff to review options for this concern. During the 2025 VPI study the idea of turning Lower Main Street into a one-way as a solution for the issue was met with significant opposition specifically from the boating community where longer boats are physically limited to accessing the park only via Lower Main Street. Without being able to redirect traffic, an all way stop is being proposed.

Conceptual Design

Currently there are already two stop signs deployed on Main Street at either side of its intersection with Route 24. One located on the northeast corner on lower Main Street next to the Masonic Lodge and another located diagonally across the street at the bottom of Main Street at the Cannon Park.

The project will include adding four new stop signs on either side of the intersection along Route 24 with double up placement. All way stop placards will be placed at all six stop signs. Additionally, three stop ahead signs will be placed along Route 24 in advance of the stop signs as indicated on image 1 below. One will be located on the southern end of Route 24 along the north bound lane as the curve approaches and the other two will be doubled up on Route 24 north of the intersection. Lastly, three new traffic pattern signs will be installed. One on Main Street, west of the intersection along the east bound lane before a curve, another located on the south bound lane of Route 24 before the stop ahead signs, and another on the northbound lane of Route 24 prior to the stop ahead sign near the Brooklyn Bridge. Please see the image below for more details.

Figure 1. Indicates location of the All Way Stop and associated signage.



This project is intended to be temporary. Signage will be removed no later than September 18, 2026 or sooner by Bowdoinham staff.

Traffic Safety During Installation and Removal

This project will have minimal needs for members to be exposed to hazards in the travel lane. The Bowdoinham Road Commissioner will have staff on hand with a town vehicle to control traffic. The project team will use cones near any area where people are working. At least one person will be tasked with simply monitoring traffic and helping to keep project installers safe. All persons on site during installation and removal will wear high-vis vests. There will be minimal impact on vehicular traffic at the sites during installation or removal.

Timeframe

We aim for an installation date of May 1, 2026 lasting no later than September 18, 2026.

Metrics

The effectiveness of the installation will be measured by feedback solicited through our bimonthly newsletter, enewsletter, Facebook page, and signage at the intersection with a QR code leading visitors to an online survey. Further, we'll also monitor any change in crash rates at the intersection. Feedback will be incorporated into the design of the permanent solution. The Town will compile a report regarding the demonstration project after the installation is removed and will disseminate that report to MaineDOT and other relevant local entities.

Maintenance Plan

The project will be monitored regularly by members of the project team, and any knocked down signage will be replaced by project team members within 48 hours of a report. Bowdoinham will do what it can to support keeping the installation in good condition.

Public Notification

Bowdoinham will use its bimonthly newsletter which is sent to all residents as well as our Facebook page with 1,500 followers, and weekly enewsletter to notify the public about the project and gather feedback. In addition, the Town will install signage at the intersection with a QR code leading visitors to information on our website as well as to the online survey. Additional measures to inform the public will be implemented as needed and requested by the public. All public comments and concerns will be directed to the Director of Planning and Development.

Approval and Permission:

The project will not move forward without Town of Bowdoinham and Maine DOT approval.

Purchase of Materials

The Town of Bowdoinham will purchase the materials for the projects.

Cost

- \$367.00 = (10) U-channel posts
- \$249.60 = (4) Stop signs (R1-1 24" Stop Sign)
- \$307.50 = (3) Stop Ahead signs (W3-1 Stop Ahead Symbol)
- \$277.50 = (3) New Traffic Pattern Ahead signs (W23-2 New Traffic Pattern Ahead)
- \$117.90 = (6) All way stop placards (R1-3P All Way)

Total: \$1,319.50

Contact

Yvette Meunier

Director of Planning and Development

Town of Bowdoinham

207-666-5531

planning@bowdoinham.com