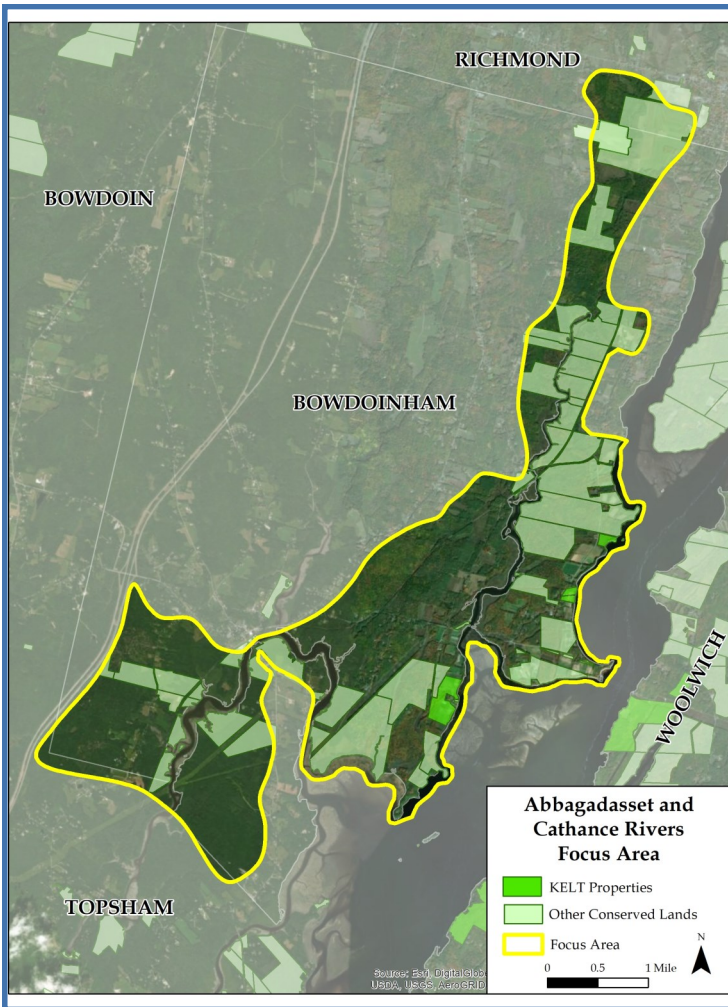


KELT Focus Areas of High Priority



3: ABBAGADASSET & CATHANCE RIVERS



QUICK FOCUS AREA FACTS

- Municipalities: Bowdoinham and Richmond
- Total Acres = 7,675 acres
- Currently Conserved = 2,536 acres
- Percent Conserved = 32%

Rare Animals

- Bald Eagle (*Haliaeetus leucocephalus*)
- Tidewater Mucket (*Leptodea ochracea*)
- Ribbon snake (*Thamnophis sauritus*)

Rare Plants

- Long's Bitter-cress (*Cardamine longii*)
- Pygmyweed (*Crassula aquatica*)
- Estuary Monkeyflower (*Mimulus ringens* var. *colpophilus*)
- Spongy Arrowhead (*Sagittaria calycina* var. *spongiosa*)
- Estuary Bur-marigold (*Bidens hyperborea*)
- Eaton's Bur-marigold (*Bidens eatonii*)
- Parker's Pipewort (*Eriocaulon parkeri*)
- Water Pimpernel (*Samolus valerandi* ssp. *parviflorus*)
- Horned Pondweed (*Zannichellia palustris*)
- Stiff Arrowhead (*Sagittaria rigida*)
- Yellow Pond-lily (*Nuphar advena*)
- Mudwort (*Limosella australis*)

Rare and Exemplary Natural Communities

Freshwater Tidal Marsh

Significant Wildlife Habitats

- Tidal Waterfowl and Wading Bird Habitat
- Significant areas with emergent marsh and mudflats
- Inland Waterfowl and Wading Bird Habitat
- 2 Significant Vernal Pools
- Deer Wintering Area

FOCUS AREA OVERVIEW

The Abbagadasset and Cathance rivers are part of a crucial river system which feeds the Merrymeeting Bay marshes. Protecting this focus area will mean ensuring the health of its freshwater tidal marshes which provide vital habitat for tidal waterfowl and wading birds and make the area a birding hotspot. Additionally, this river system is home to many rare plants such as Water Pimpernel, Estuary Monkeyflower, and the globally rare Eaton's Bur Marigold.

Existing Conservation

- Merrymeeting Bay WMA (MDIFW—many parcels)
- Kelley Farm and Blue Bell Farm (Maine Farmland Trust)
- Marsh Field Farm Easement (KELT)
- Fairwinds Farm Easement (KELT)
- Bay Parcel (KELT)

