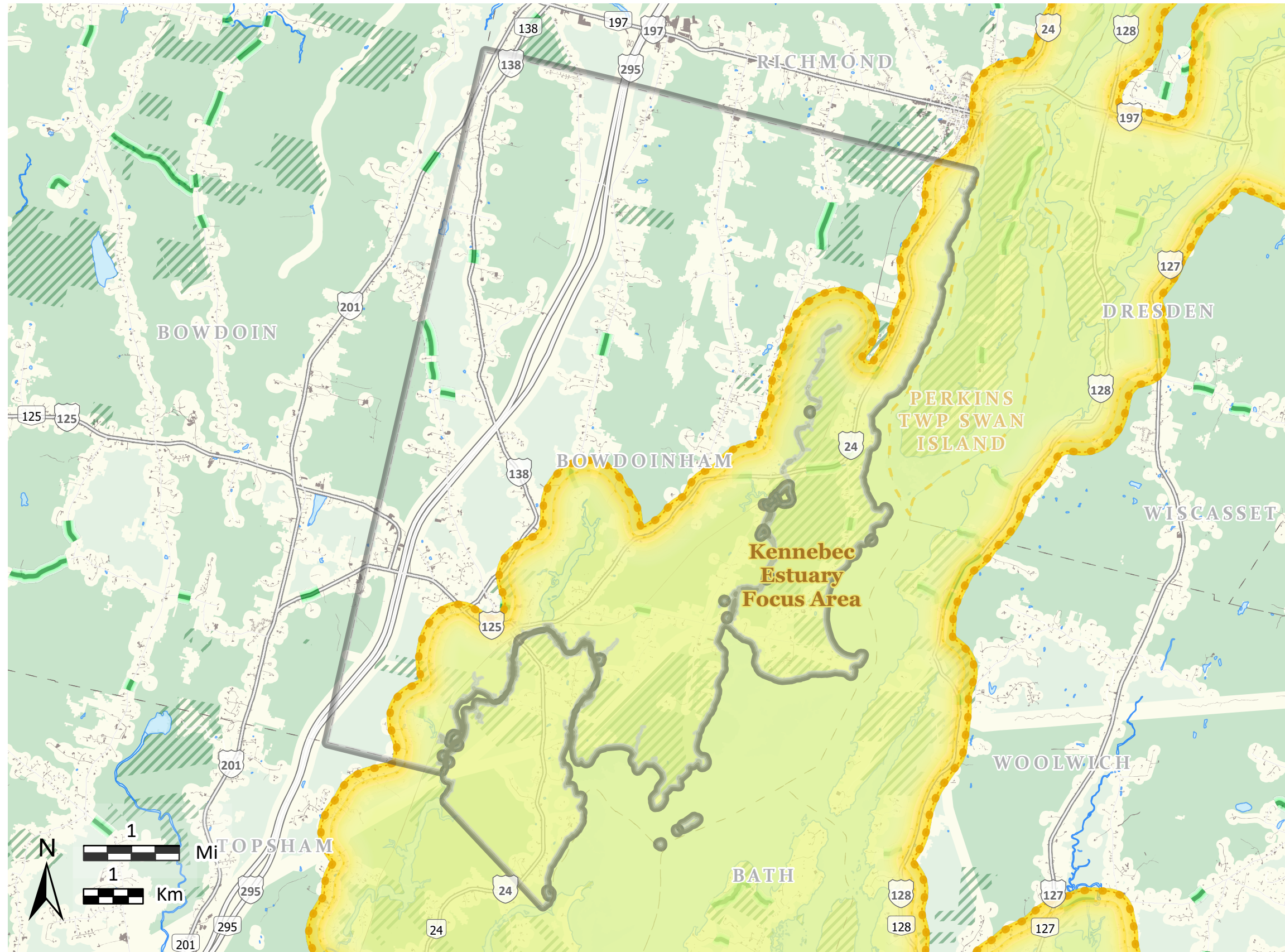
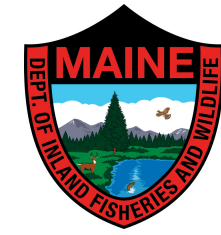


Bowdoinham

Habitat Connectivity



Beginning with Habitat (BwH) equips Maine communities, landowners, and conservation partners with tools to protect, restore, and connect important habitats and ecosystems in a changing climate. www.beginningwithhabitat.org

- Area of Interest**
- Organized Towns**
- Unorganized Towns**
- Impervious Surface**
- Focus Areas of Statewide Ecological Significance**
- Conserved Lands**
 - Fee and Easement Conservation Land**
 - Development Buffer**
- Habitat Connectors**
 - Likely Road Crossing Areas for Wildlife**
- Habitat Blocks**

Comprehensive Plan Review Criteria Rule (DACF Chapter 208) requires blocks >500 acres be considered important natural resources for town comprehensive planning.

 - 0-500 Acres**
 - 500 + Acres**

TOWNSHIP BOUNDARIES - ME Office of GIS (2021)
 IMPERVIOUS CCAP NOAA - impervious land cover (2022)
 HYDROLOGY - US Geological Survey (2016)
 UNDEVELOPED HABITAT BLOCKS & CONNECTORS - ME Dep of Inland Fisheries and Wildlife (2020)
 ROAD STREAM CROSSINGS - ME Dep. of Inland Fisheries and Wildlife (2022)

CONSERVATION LANDS - ME Dept of Ag., Cons., and For., Land Use Planning Comm'n, ME Dep. of Inland Fisheries and Wildlife (2024)

This map is nonregulatory and is intended for planning purposes only

December 2025