

MEMORANDUM

To: Bowdoinham Selectboard

From: Yvette Meunier, Director of Planning & Development

Date: March 2026

Re: Authorization for MaineDOT to Submit a Congressionally Directed Spending Request on the Town's Behalf

Recommendation

Staff recommends that the Selectboard authorize MaineDOT to submit a **Congressionally Directed Spending (CDS)** request on behalf of the Town of Bowdoinham for a package of transportation improvements identified through the **Village Partnership Initiative (VPI)** planning process.

The request would be **capped at \$2,500,000**, with the Town committing **up to \$250,000 (10%)** from the TIF fund as the required local match. MaineDOT will refine the project scope and cost estimates as they complete their internal review, and the final match amount may be adjusted accordingly.

This action positions Bowdoinham to leverage a rare federal funding opportunity that aligns directly with the community's long-term vision for the Village Center.

Why This Opportunity Is Advantageous

- **Lower match requirement:** CDS requires only a **10% local match**, compared to the **20% match** required for standard MaineDOT projects.
- **Expanded eligibility:** CDS can fund improvements—such as **parking lot upgrades**—that MaineDOT would not normally include in its capital program.
- **Compatible with TIF cash flow:** The longer federal funding timeline (award in 2027, estimate construction beginning as early as 2028) allows the Town to plan TIF expenditures without affecting other commitments.
- **Moves a long-standing community priority forward:** This funding opportunity accelerates progress on the Village Partnership Initiative study which began back in 2024. Several of these elements have remained unfunded for years, and CDS provides a realistic path to finally implement them as a coordinated package rather than piecemeal over a much longer timeframe.

Proposed Project Elements

All elements are drawn from the **Village Center Planning Study (June 2025)** and reflect priorities identified by residents, businesses, and community partners. See attached renderings for reference. ***Note these renderings are not final designs and will be open again for interpretation during the design phase.***

1. Realignment of the Maily Park Entrance with the New Park Entrance & Paving – Estimated Cost - \$200,000

Improves safety and circulation at a complex intersection and supports future park access. Enhances year-round usability, reduces maintenance, and improves ADA accessibility.

2. Sidewalk from the Brooklyn Bridge to Wallentine Road – Estimated Cost \$1,500,000

Creates a continuous pedestrian connection between the Village Center and nearby neighborhoods.

3. Three Gateway Treatments on Route 24 – Estimated Cost \$300,000

Located near Wallentine Road, Ridge Road, and Upper Main Street, these treatments calm traffic and reinforce Bowdoinham’s village identity.

Alignment with the VPI

The VPI process began in 2024 as a collaborative effort between the Town of Bowdoinham, MaineDOT, and the community to re-envision the Village Center and identify transportation and placemaking improvements that would strengthen the area for decades to come. Over the course of two years, the project team engaged residents through public workshops, hands-on design sessions, on-site field analysis, MaineDOT technical review, and community surveys.

This extensive public process culminated in the Final Village Center Planning Study, documents the community’s priorities and provides a clear roadmap for improving safety, mobility, and the overall character of the Village Center. The elements proposed for this CDS request: Maily Park entrance realignment, sidewalk extension, parking lot improvements, and gateway treatments were consistently supported by residents throughout the study and are highlighted in the report as key actions needed to enhance the Village Center’s function and safety.

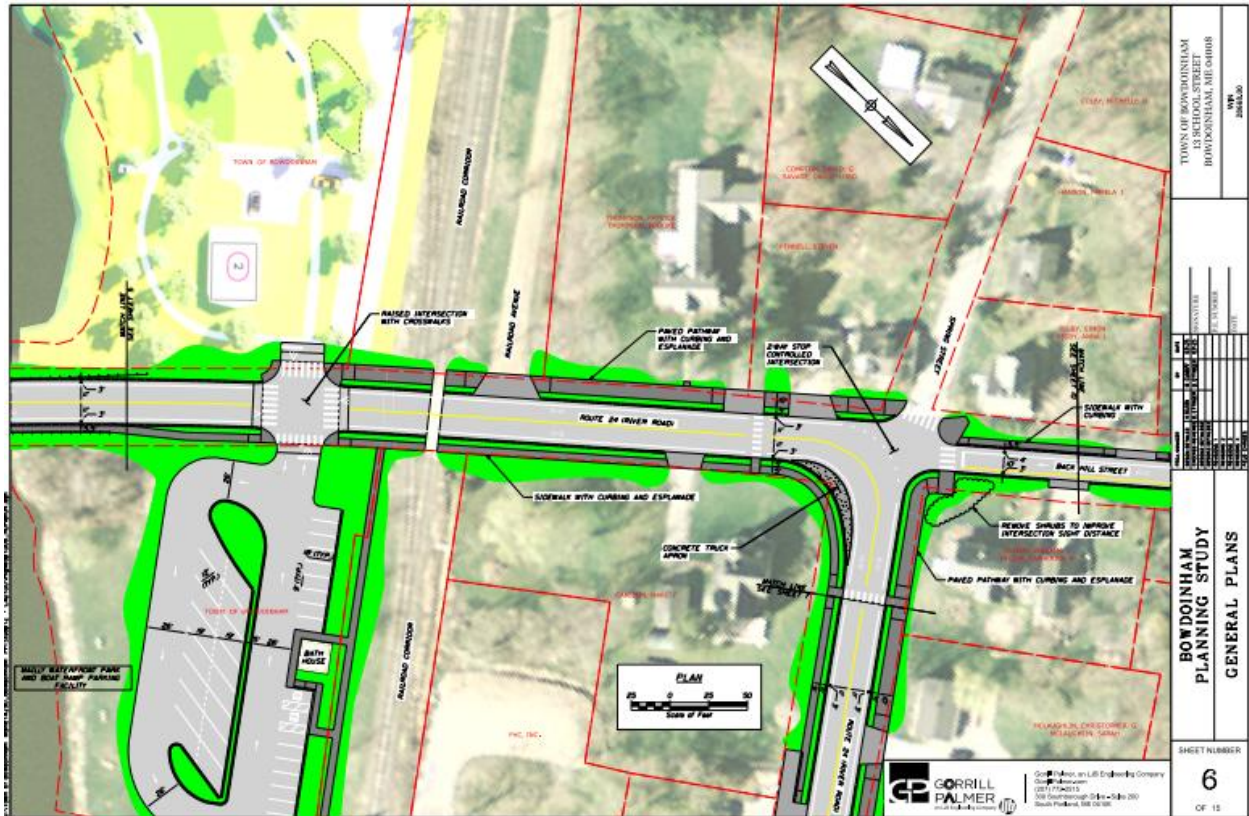
Timeline

Phase	Estimated Timing
Selectboard approval	Spring 2026
CDS submission by MaineDOT	Spring 2026
Federal budget passage	Fall 2026
Award announcements	As early as January 2027
Design phase	2027
Construction	Multi-year, beginning as early as 2028

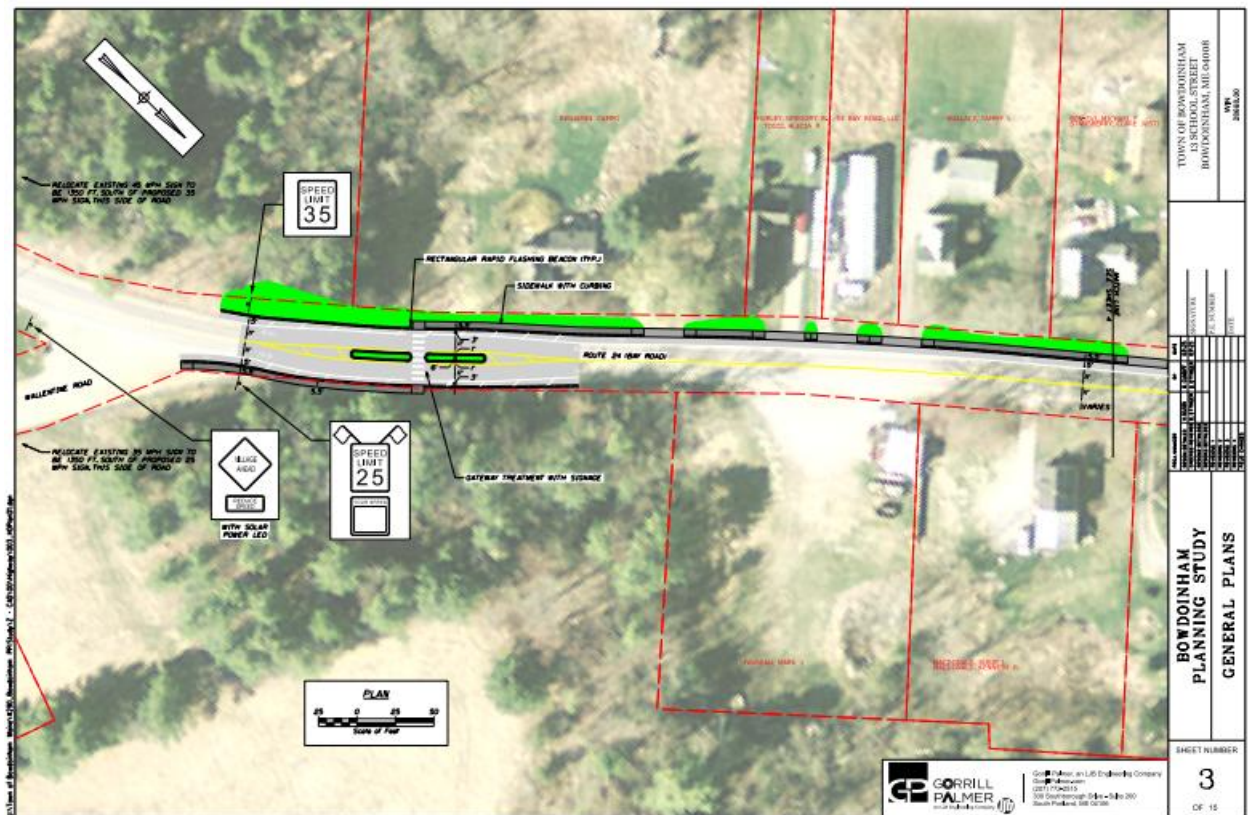
Requested Action

Staff requests a motion supporting MaineDOT’s Congressionally Directed Spending request on behalf of the Town of Bowdoinham for a transportation improvement package not to exceed \$2,500,000, and to authorize the use of up to \$250,000 in TIF funds as the required 10% match.

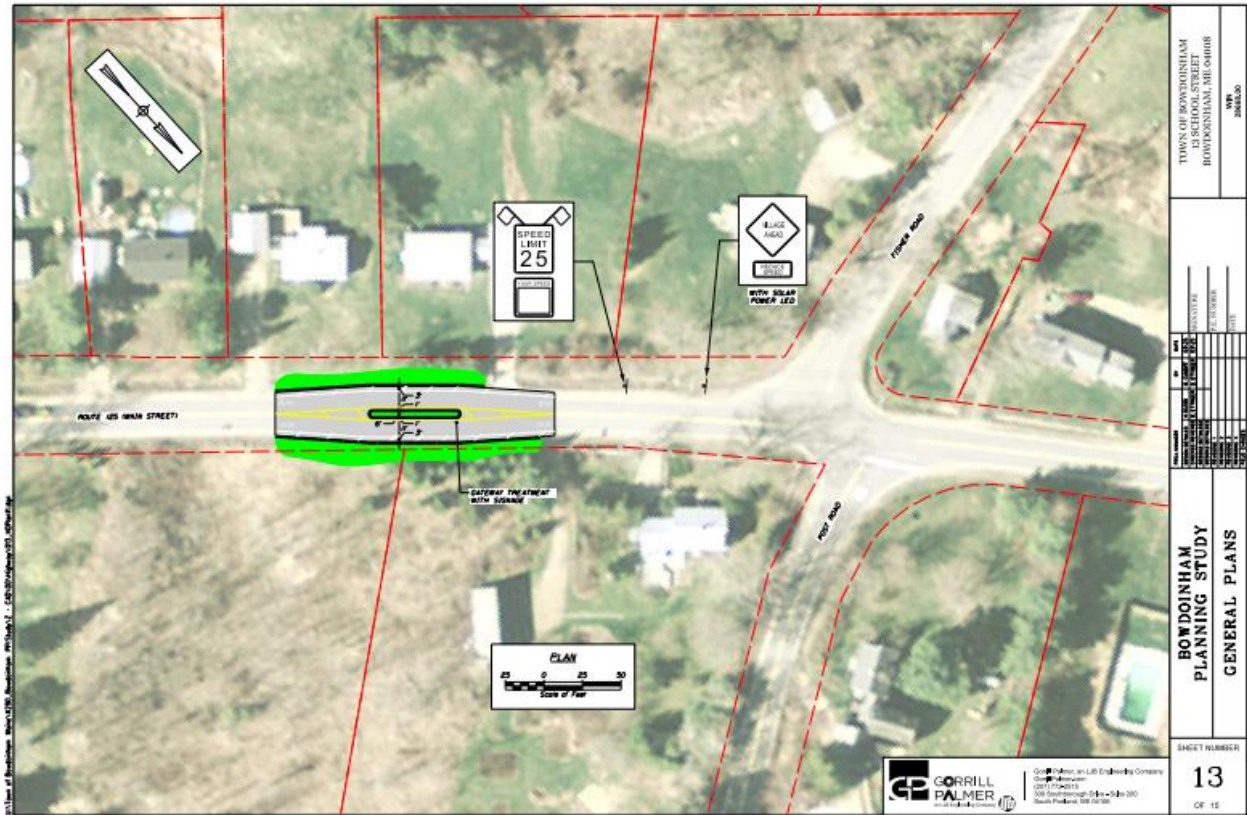
Maily Parking Lot & Realignment



Sidewalk to Wallentine near Wallentine & Gateway Treatment



Gateway Treatment: Upper Main St. near Fisher/Post intersection



Gateway Treatment: Rt. 24 near Ridge Rd.

