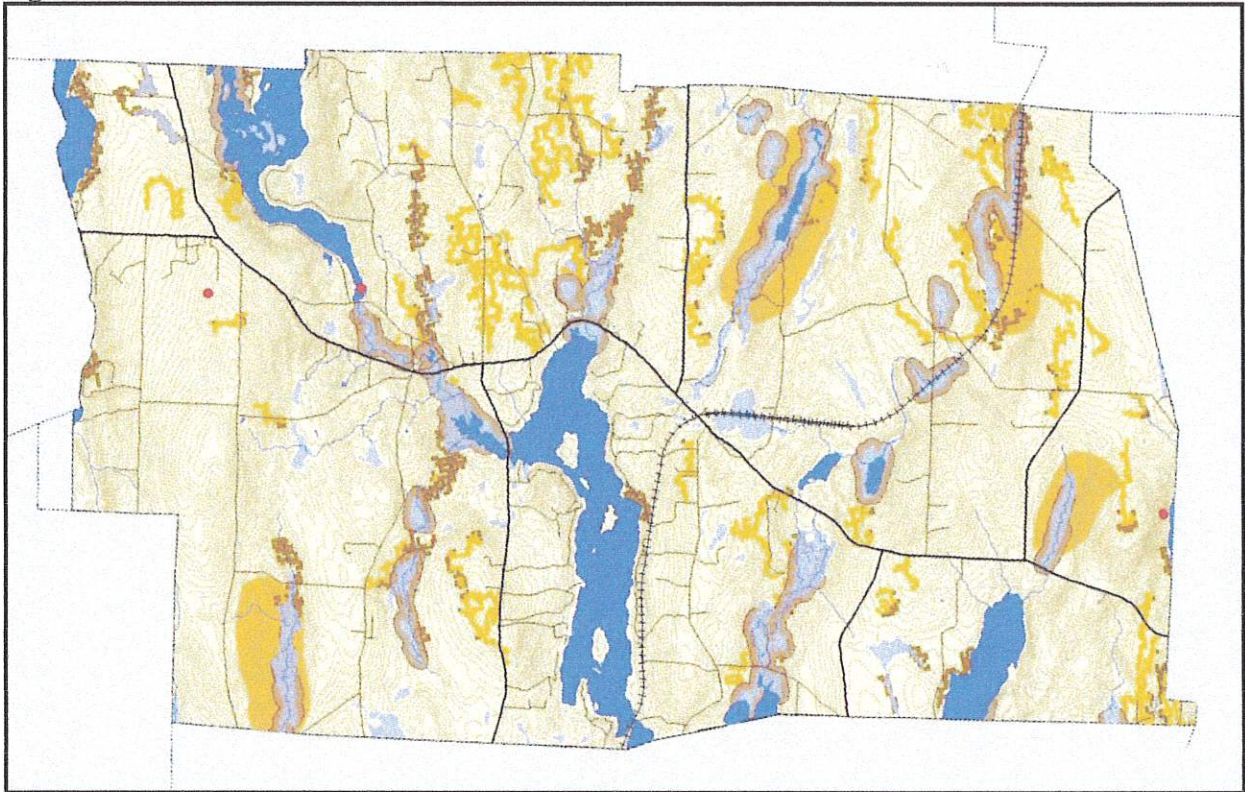


### Significant Wildlife Habitat



The significant wildlife habitat shown above includes waterfowl & wading bird habitat (*light brown*), deer wintering areas (*solid yellow areas*), wetlands (*light blue*), rare species sites (*small red dots*), and significant grasslands and upland forests (*spotted yellow and dark brown*). These habitats have been mapped by the state, and are not confirmed on the ground.

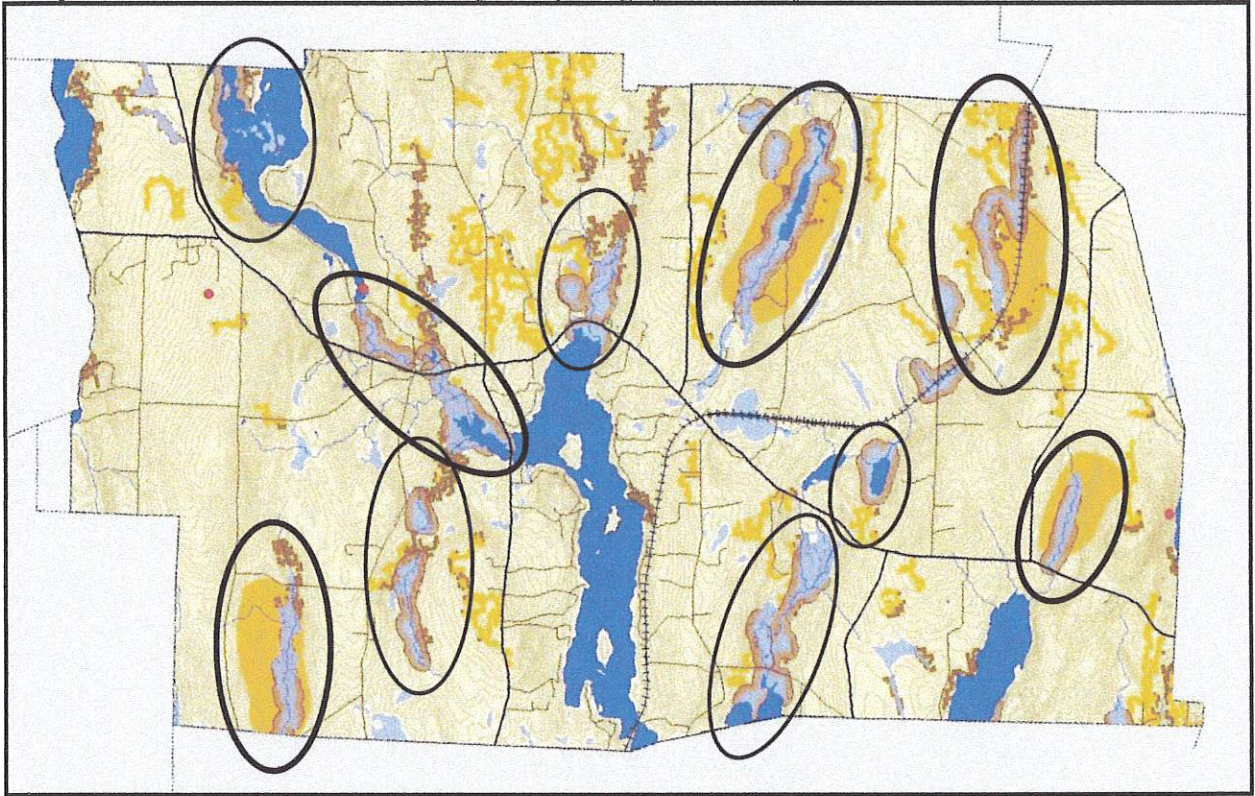
In order to ensure the ecological integrity and diversity of natural communities and wildlife habitats are protected and maintained within town, key conservation efforts need to be made:

- (1) In order to maintain certain species, larger blocks of undeveloped land are needed;
- (2) Wetlands, streams, lakes and ponds are not only more species-rich, they are more sensitive to impacts of development;
- (3) Special consideration needs to be given to rare/threatened species or rare/unique habitat types;
- (4) The corridors that wildlife use to travel are as important to protect as habitat blocks.

The maps on the following page show Unfragmented Blocks of Open Space, and Significant Corridors. The Unfragmented Blocks map illustrates generally where blocks of land are unbroken by roads and development (some of these blocks are more developed, such as the block surrounding Maranacook Lake). The Corridors map shows the most important wildlife corridors in Readfield, along the streams and waterways that cross the town; these corridors serve not only as wildlife corridors but recreation corridors for boating or potential trails.

**High Value Wildlife Habitat**

*Analysis 1: Areas with and occurrence of multiple significant wildlife habitats*



*Analysis 2: Significant habitat areas overlap with identified significant wildlife corridors*

