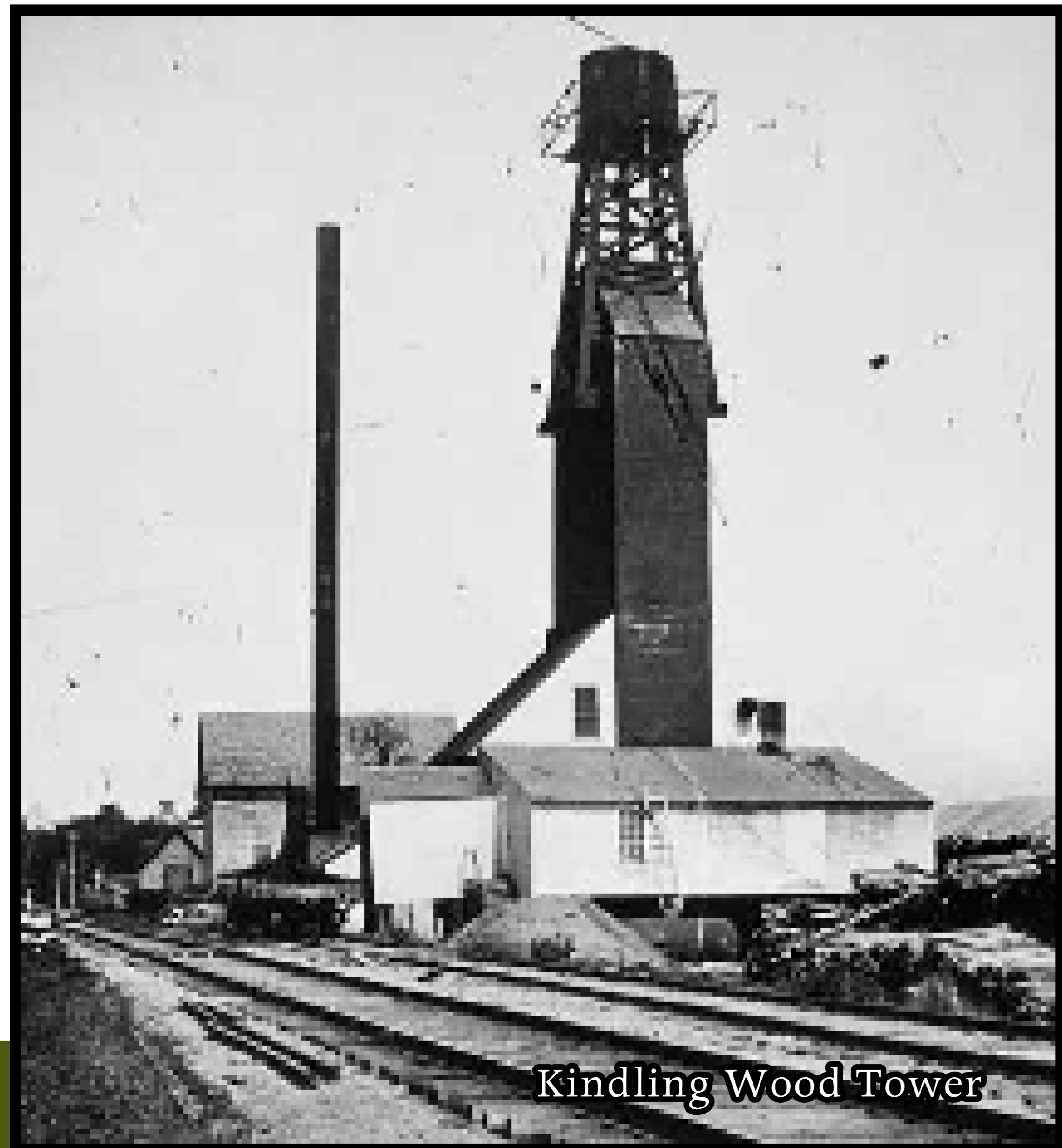


The Steam Sawmill

From 1837 until 1927, the steam sawmill filled the area between the foot of Pleasant Street, and the West Branch, producing lumber, lathes, clapboards and shingles. It employed about 60 workers and 14 horses. Brigs and schooners could load at the mill and carry their cargo to Boston, the Carolinas, or the West Indies.



The Standard Wood Company, known as the "Kindling Wood Factory" was established in 1889. The factory used pine edgings, slabs and scraps from the nearby sawmill to make kindling wood for household use by cutting, drying and packaging the waste into a marketable product. It was located on the flat between the railroad track and the Cathance River. The drying kiln was made of brick and was eighty feet tall. Wood edgings were dried by steam, pressed and bundled, and then shipped to New York by rail. The mill employed a crew of 25 and operated until it was destroyed by fire in 1909.

Excerpt from the book "BOWDOINHAM, The Bay, The Land, The People" by the 250th Book Committee

The Kindling Wood Factory