

**Proposal for
Professional Services**

OPEN SPACE PLAN

Town of Bowdoinham, Maine

March 6th, 2026

VIEWSHED

Landscape Architecture | GIS | Planning



TABLE OF CONTENTS

Firm Descriptions	3
Our Team	4
Project Approach	6
Relevant Experience	12
Schedule	17
Fee Proposal	18
Resumes	19

FIRM DESCRIPTIONS

VIEWSHED

Landscape Architecture | GIS | Planning

VIEWSHED is a leading landscape architecture, GIS, and planning firm based in Yarmouth, Maine. We are a diverse group of design professionals, specializing in both large-scale planning and detailed site design. Our staff is composed of professionals with backgrounds in landscape architecture, community planning, public engagement, GIS analysis, visual resource assessment, 3D modeling, graphic design, and land-use permitting. We also collaborate with other firms from a variety of disciplines to address complex challenges.

Our team works in collaboration with communities across Maine in the planning and design of public spaces. We have extensive experience with municipal and urban projects, open space and master planning, streetscape design, sidewalk and pathway planning, municipal parks, and similar facilities that demand careful attention to user needs, pedestrian scale and movement, and maintenance.

The cornerstone of our work is an emphasis on graphic communication to assure quality public understanding. We work with state of the art software to ensure our mapping and graphic work is accurate, effective, and visually impressive. We believe the most appropriate solutions come from thoughtful engagement with our clients as well as the innovative ways we facilitate the public outreach process.



FB Environmental (FBE) is a mission-driven consulting firm that specializes in directing environmental planning, assessment, monitoring, mapping, and restoration projects for a diverse array of clients. The company was founded by Forrest Bell in 2001 with a focus on incorporating forward-thinking natural resource planning into municipal planning projects. The FBE staff is composed of highly qualified water quality specialists, ecologists, biologists, and natural resource scientists with a breadth of experience facilitating municipal conversations around natural resource

protection and equitable open space access. Examples of FBE projects include assistance with planning documents such as Comprehensive Plans, Open Space Plans, and Climate Action Plans, as well as technical assessment projects such as water quality sampling and analysis, natural resource inventories, wetland delineations, and more. Since its beginning, FBE has become a regional leader in assisting municipalities with natural resource planning and has worked extensively across Maine.

Collectively, FBE's staff have more than 200 years of combined experience working on land and water resource projects in New England. As FBE is a small business with low overhead, we can provide a high-quality professional product at reasonable hourly labor rates. References have indicated that the firm's greatest asset is the staff's ability to work with great attention to detail to meet the specific needs of project partners and the public. FBE takes great pride in our ability to communicate complex scientific details with the public. Through an evaluation conducted by an independent research firm for the US Government, we were given an overall performance score of 95 (out of a possible 100) by our current and past clients. Our staff professionalism and expertise ranking scored a perfect 100.

OUR TEAM

We have assembled a highly qualified team to lead the development of this Open Space Plan. VIEWSHED and FBE have worked together on many projects in the past and have an excellent working relationship. This project will be a team effort with clearly defined roles and responsibilities. See the team members that will be part of this project below.

Judy Colby-George (VIEWSHED), Project Manager



Judy is the owner and principal of VIEWSHED. She has over 30 years of experience helping clients to implement GIS and engage in complex spatial issues. Judy has extensive experience helping communities build resilience, including land use planning, suitability analysis, and public participation. Judy believes that GIS is a tool that can help engage the public in the messy problems that face our world today, and work with clients to tell their stories, represent data in an understandable format, and invite a variety of people to the

decision-making process. Judy's depth of experience working with Maine communities to solve complex planning questions positions her to be an effective project manager for this open space planning process. A few relevant examples of projects Judy has led include the Scarborough Open Space Plan and the Topsham Natural Areas Plan.

Hilary Oat-Judge (VIEWSHED)



Hilary Oat-Judge, PLA, LEED AP, has twenty years of experience in Landscape Architecture, designing projects of varied scales in the public and private realm. Some of her signature projects are the redesign of the Native Plant Garden at the New York Botanical Garden and the design of the Trellis Bridge at the Chicago Botanic Gardens. Hilary has extensive experience in planning, site analysis, streetscape design, and managing complex projects. Her deep knowledge of native planting design, stormwater management, and sustainable

design honed through decades of practice gives her invaluable expertise for all types of projects.

Madeline Tripp (VIEWSHED)



Madeline is a GIS & Public Engagement Specialist at VIEWSHED. She is passionate about developing online maps & interactive tools that make data approachable & help communities build resilience. Madeline has experience collaborating with a wide range of stakeholders and creating maps that help people solve problems and plan for the future. She contributed to the GIS analysis, public engagement, and plan development for the Scarborough and Bridgton Open Space Plans, as well as the Augusta Parks and Recreation Master

Plan. She develops interactive, online maps, dynamic surveys, and digital mapping activities to increase access and participation for planning projects.

Bina Skordas (FBE)



Bina brings nearly 15 years of experience leading municipal and environmental planning projects throughout the Northeast and Western United States. Her expertise spans climate action planning, climate vulnerability assessments, open space planning, stakeholder engagement, and public facilitation. Working alongside municipalities in Utah and Maine, she has served as project manager on a wide variety of planning initiatives, conducting complex research, authoring technical reports, and helping communities set ambitious sustainability goals.

Bina is particularly skilled at facilitating difficult conversations that bring competing community priorities into alignment. Recent work includes a completed Open Space Plan for Stratham, NH and an ongoing Open Space Plan for Durham, ME, making her well positioned to lead Bowdoinham's first Open Space Plan.

Maggie Mills (FBE)



With over a decade of experience at FBE, Maggie serves as a Senior Project Manager and Hydrologist, overseeing projects related to natural resource management and planning. She has played a key role in supporting community master plans, open space plans, and recreation plans, ensuring natural resources remain central to community development decisions. Her deep familiarity with the New England landscape informs her practical, grounded approach to environmental stewardship. Maggie has previously led open space planning efforts in South Portland and Bar Harbor, ME and Burlington, VT.

Mindee Goodrum (FBE)



Mindee leads watershed and community planning projects spanning municipal and climate resiliency planning, stakeholder engagement, watershed management, and water quality monitoring and analysis. She also brings a background in ecology, regularly conducting vegetation monitoring, wetland delineations, and invasive plant surveys. Her year of service as an AmeriCorps member at a land trust gave her hands-on experience in conservation strategies and land management, directly relevant to Bowdoinham's open space and agricultural protection goals. This combination of ecology, conservation, and community planning gives Mindee a unique skillset to support this project. She previously worked on the Scarborough, ME Open Space Plan and is currently assisting Durham, ME with an Open Space Plan.

Julia Maine (FBE)



Julia leads climate resilience, spatial analytics, environmental monitoring, and community planning projects at FBE. She conducts GIS mapping and spatial analyses for climate vulnerability assessments and works with clients to integrate climate impacts into planning, evaluate adaptation options, and develop actionable priorities, skills directly applicable to Bowdoinham's open space inventory and analysis tasks. Julia is knowledgeable about New England climate policies with a particular focus on municipal action in Maine and is an experienced science communicator who facilitates informed planning and decision-making with diverse stakeholders. Prior to joining FBE, she supported the Climate Ready Coast - Southern Maine and the Southern Maine Climate Action Planning Cohort at the Southern Maine Planning and Development Commission and has conducted greenhouse gas emission inventories and sustainability strategy development.

PROJECT APPROACH

Our team understands that the development of an Open Space Plan for Bowdoinham is a vital next step in implementing some of the community's highest priorities that emerged from the Comprehensive Plan, including preserving open space in the agricultural district. We envision creating a plan that builds on these goals by engaging and educating the community, clarifying the community's vision and goals for its open space, and identifying actionable ways to implement these goals.

An open space plan can be an effective tool to help a community preserve spaces that are valuable to them (such as agricultural lands, areas of cultural/historic significance, recreational areas, or habitat) while also equipping the community for future needs and risks, such as housing or climate change. We understand that how a community decides to use its land can impact people's livelihoods, quality of life, and the health and character of the community. The combined VIEWSHED and FB Environmental team offers the skills and technical expertise to facilitate a data-driven, community centered planning process. We will also bring our depth of experience in reviewing and writing ordinances to help Bowdoinham take the first steps to implementing the community's vision.

Task 1: Open Space Plan Administration

VIEWSHED will serve as the Town's primary point of contact and will manage day-to-day coordination, meeting facilitation, and deliverable production. Our project management style is grounded in clear and proactive communication with the Town to ensure that we meet project objectives, while staying within the schedule and budget. We will use calls or brief emails to resolve project needs and keep the project on schedule.

Given budget constraints, we propose meeting with the Comprehensive Plan Committee either twice in-person or three times virtually. These meetings would precede the public engagement opportunities at the beginning and middle of the process. After the Open Space Plan is complete, there will be another meeting with Town Staff and the Comprehensive Plan Committee to review the ordinance language.

At the beginning of the project, we will coordinate with Town staff to review and adjust the proposed schedule and objectives. VIEWSHED will also coordinate with the Town to ensure that all the documentation needs for



the quarterly and final CRP reports are met, including sending written updates of project progress.

Deliverables:

- Signed contract with the Town
- Emails and meeting notes
- Attend Comprehensive Plan Committee Meetings (either 2 in-person or 3 virtual)
- Summary of project activities for CRP reports (quarterly and final)

Task 2: Open Space Plan

Task 2A: Inventory & Analysis

The foundation of this project is developing a deep understanding of the Town’s existing open space and any existing goals or policies the Town can build on.

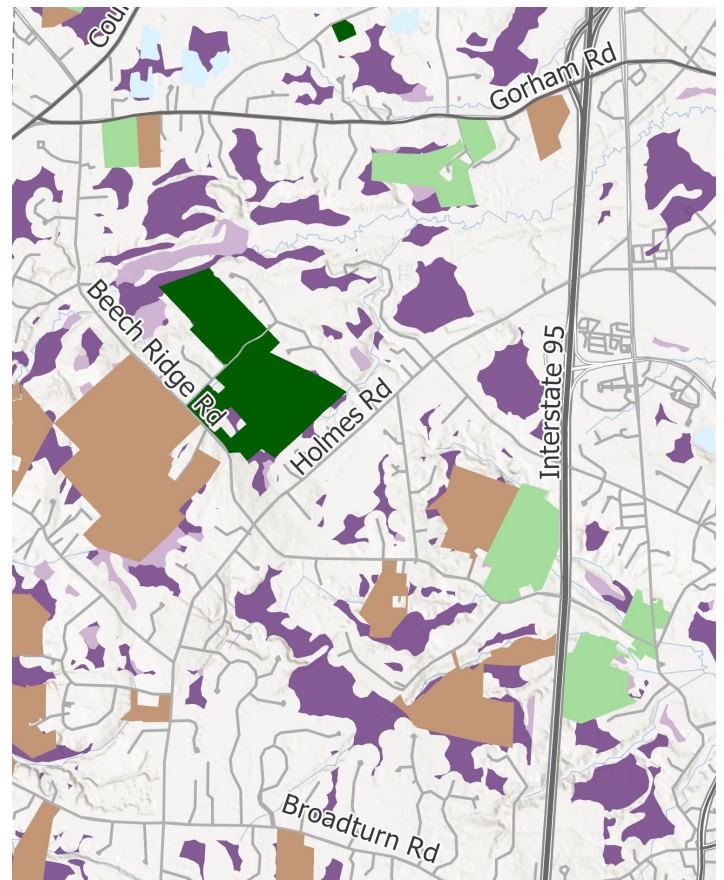
VIEWSHED and FBE will use GIS analysis to develop an inventory of existing open space resources within the Town. Our team will use existing data from multiple sources, including the Maine State GeoLibrary Data Catalog, Beginning with Habitat maps from Maine Inland Fisheries and Wildlife, FEMA floodplain mapping, state aquifer data, municipal GIS layers, and any data available from partners like the Kennebec Estuary Land Trust and Maine Farmland Trust. The Team will analyze critical natural resources (such as groundwater and surface water resources, wells and wellhead protection areas, soils and prime farmland, undeveloped habitat blocks, critical habitats, and wildlife corridors) as well as community resources (including trails, parks, recreation areas, historic sites, and scenic vistas). This data will be used to identify high priority open space for conservation. A tally of existing open space can also be calculated to serve as the baseline for Bowdoinham’s goal to conserve 30% of its land area by 2030. This inventory will inform the plan and be used to develop printed and interactive online maps for

the public to explore.

Additionally, FBE will conduct a high-level vulnerability assessment using climate projection data sources including the Maine Stream Habitat Viewer, The Nature Conservancy Future Habitat Explorer, and regional climate data trends to analyze how climate change impacts may affect Bowdoinham’s ecosystems and open spaces. The results of this comprehensive analysis will be synthesized into a series of publicly engaging maps and technical datasets that will inform the conservation strategy development. As part of the initial inventory, FBE will also conduct a thorough review of Bowdoinham’s Land Use Ordinance, as described in Task 3A.

Deliverables:

- Maps and geodatabase from Existing Conditions Analysis
- Maps and geodatabase from the Vulnerability Assessment



Task 2B: Public Engagement

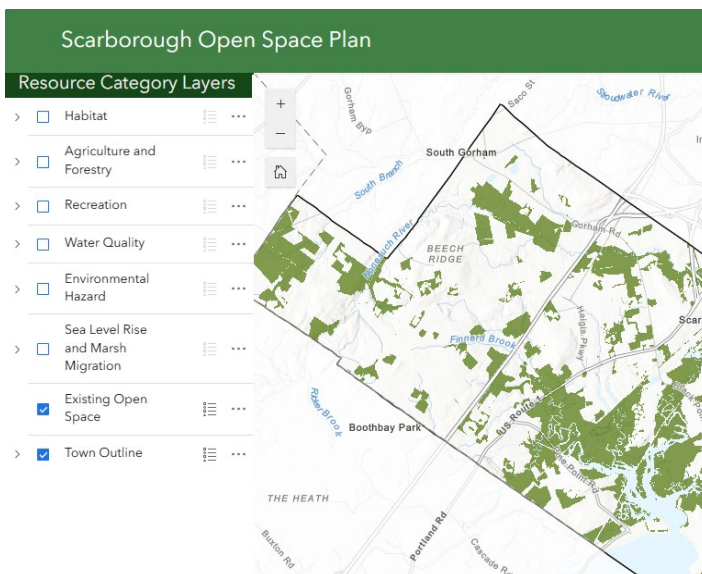
The Open Space Plan should reflect the vision and values of the Bowdoinham community. Providing a variety of public engagement opportunities at multiple points throughout the process is key to the success of the plan. We strive to create informative and interactive activities, both online and in-person, that will allow as many people as possible to participate. At the outset of this project, we will set up a public website that will provide a place for community members to see progress updates, review interactive maps and information, and find opportunities to participate.



We will also coordinate with Town staff to develop an outreach plan tailored to reach Bowdoinham residents. Our team will develop outreach materials (such as flyers) that can be used by the Town to advertise public meetings via social media, email, mailers, newsletters, or other channels of communication.

To kick off public engagement, our team will plan a single public workshop in mid to late May to share initial findings from the existing conditions analysis, introduce the community to open space planning, and develop a shared definition of open space, which will be used to guide the rest of the plan. We will develop an online version of this workshop to gather input from community members who cannot attend the public meeting. Instead of hosting another kick-off meeting, we suggest having a mid-process meeting in September (described below).

In the place of a survey to reach agricultural producers, we propose holding a focus group, as we have had greater success reaching the farming community with in-person engagement. VIEWSHED will work with Maine Farmland Trust (MFT) to develop questions and activities for the focus group. We will discuss and gather feedback on how



producers can best be supported through the recommendations of this plan. The focus group could be held in early May or October, but the timing is flexible to ensure we accommodate the growing season. We will rely on the expertise of partners at the MFT to determine timing and to invite key individuals to participate.

In mid-September, the Team will plan an open house followed by a public workshop. The open house will give the public a chance to become familiar with the plan, review information and maps, ask one-on-one questions, discuss ideas with other community members, and make suggestions. The public workshop will include a presentation and interactive activities focused on prioritizing types of open space, general needs throughout the community, and recreational opportunities. We will develop an online version of this public engagement opportunity (such as a survey) to gather input from community members who cannot attend the meeting.

In mid-November, a final public meeting will be held to present the draft plan to the public and solicit feedback. This meeting will include

activities for the public to prioritize the draft goals and policies envisioned in the plan. After this meeting, the draft plan and an online comment card will be published on the project website to gather any additional feedback through the end of February. The comment card and a shared version of the draft will also allow feedback from town boards/committees. Our Team will also publish a survey similar to the prioritization activity to capture priorities from anyone not able to attend the meeting.

Deliverables:

- Website
- Workshop #1 Materials
- Workshop #1 Online Engagement
- Ag Focus Group Materials & Results Summary
- Open House / Workshop #2 Materials
- Workshop #2 Survey / Online Engagement
- Workshop #3 Materials
- Workshop #3 Survey / Online Engagement & Comment Card



Task 2C: Plan Drafting & Review

Following completion of the inventory analysis and initial community engagement, all findings will be synthesized into a comprehensive, actionable Open Space Plan for Bowdoinham. The team will work collaboratively with the Comprehensive Plan Committee (CPC) to develop a written plan with clear goals, vision, and implementation strategies that balance conservation and climate priorities with Bowdoinham’s rural character, economic needs, and development pressures. VIEWSHED will create compelling visual materials including maps, infographics, and data visualizations that make the findings accessible to diverse audiences.

There are several options of formats for a final plan, including a dynamic ESRI GIS StoryMap that allows for future updates and interactive exploration, or a traditional written document with an executive summary. Both formats can incorporate the existing conditions data, climate vulnerability findings, community input, and prioritization framework into a cohesive strategy document. FBE will lead preparation of a draft version of the plan, with support from VIEWSHED, for thorough review by the CPC, Town staff, other boards and committees, and the public. During the drafting process, the public workshop in November will

allow the public to provide input on proposed strategies and recommendations, which will be incorporated into the draft.

Deliverables:

- Draft Open Space Plan

Task 2D: Plan Revision & Adoption

The draft plan will be presented to the public at the public meeting in November Workshop #3 and will be posted on the project website with an online comment card to gather feedback from December through February (as described in Task 2B). This open comment period is also an opportunity to gather feedback from municipal boards and communities. It is expected that all comments from town staff and other municipal boards and committees will be collected into one document. FBE will incorporate feedback and comments into the final version of the plan by the end of April to provide a review period before the town meeting in June. The final plan will serve as both a policy document and a practical tool for guiding Bowdoinham’s conservation decisions over the next decade and beyond.

Deliverables:

- Final Open Space Plan



Task 3: Ordinance Review & Revision

Task 3A: Review Current Ordinance Language

FB Environmental will lead the review of Bowdoinham's Land Use Ordinance. As part of the review, FBE will look for opportunities to strengthen natural resource protections, increase open space and conserved lands, and incentivize beneficial practices such as cluster development or conservation subdivisions that can enhance open space. Initial recommendations will be incorporated into the inventory and analysis report. Edits will be incorporated as part of the review process for that document. Input from the public on proposed recommendations will also be incorporated following the public workshop in November.

Deliverables:

- Table of ordinance review, including preliminary recommendations

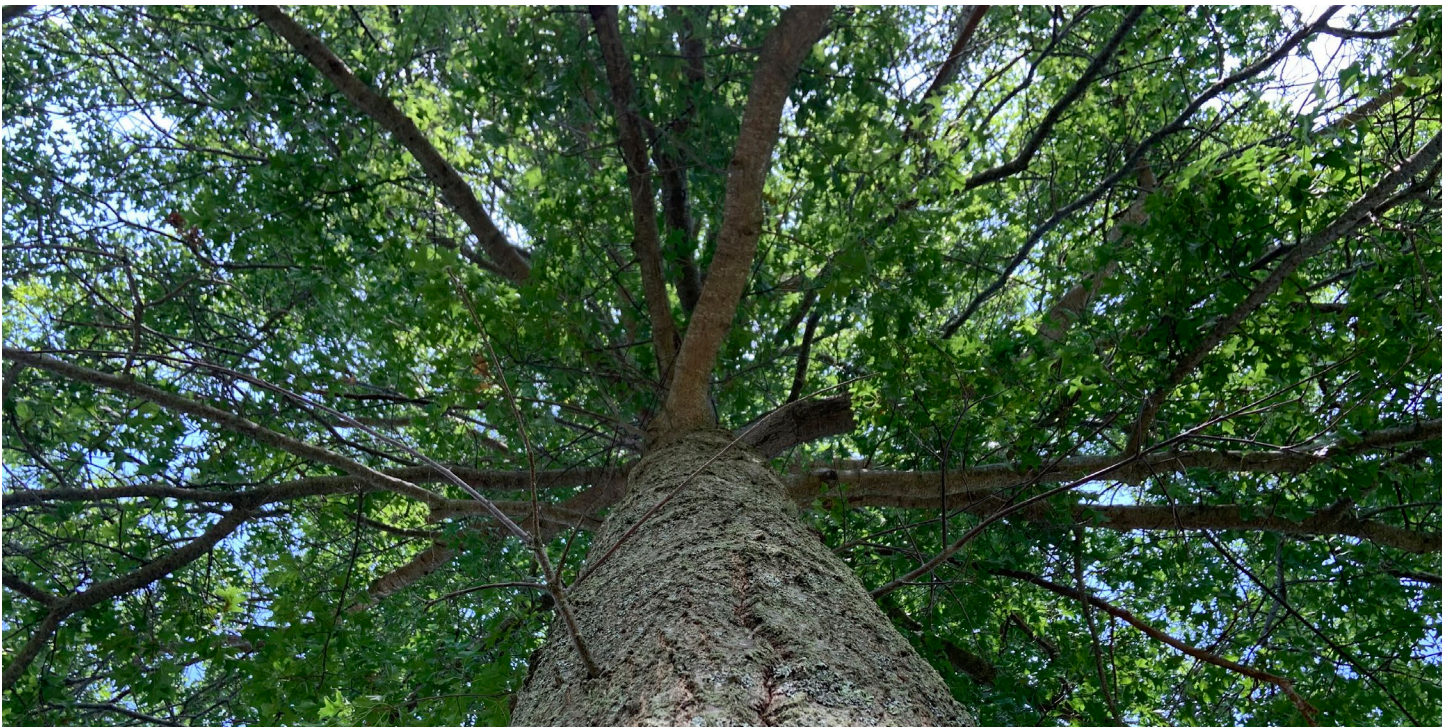
Task 3B: Draft Ordinance Revisions

Following adoption of the Open Space Plan in June 2027, FBE will work with the CPC, town staff, and the Planning Board to prioritize recommended ordinance changes. Prioritization will consider impact on open space and natural resources, as well as public support based on results of the workshop. Based on this prioritization, FBE will draft the language for the top two recommendations. FBE will find examples of similar ordinances in other communities and share the language with the project team for feedback.

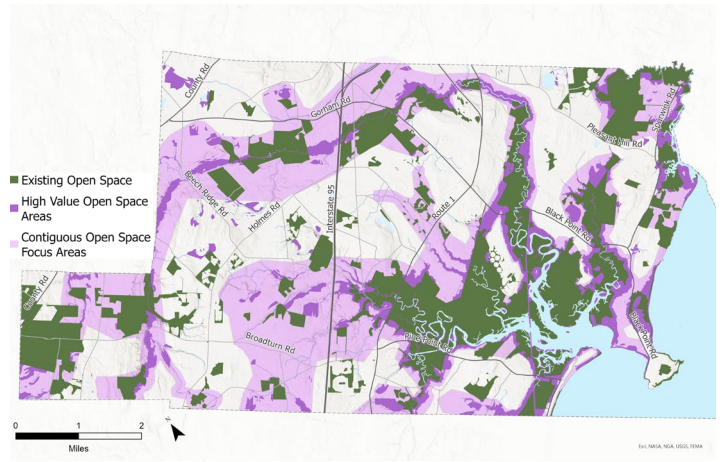
The draft ordinance language will be shared with the project team for one round of edits, prior to December 31, 2027. Following that submission, it is expected that any further edits before the draft ordinance(s) are presented at the June 2028 Town Meeting will be incorporated by the committee or Town staff in consultation with the Town's lawyer.

Deliverables:

- Ordinance amendment language for two ordinances



RELEVANT EXPERIENCE



Open Space Plan

Town of Scarborough

Date Completed: March 2025

Contact: Jami Fitch

Sustainability Coordinator

jfitch@scarboroughmaine.org

Team:

Judy Colby-George

Madeline Tripp

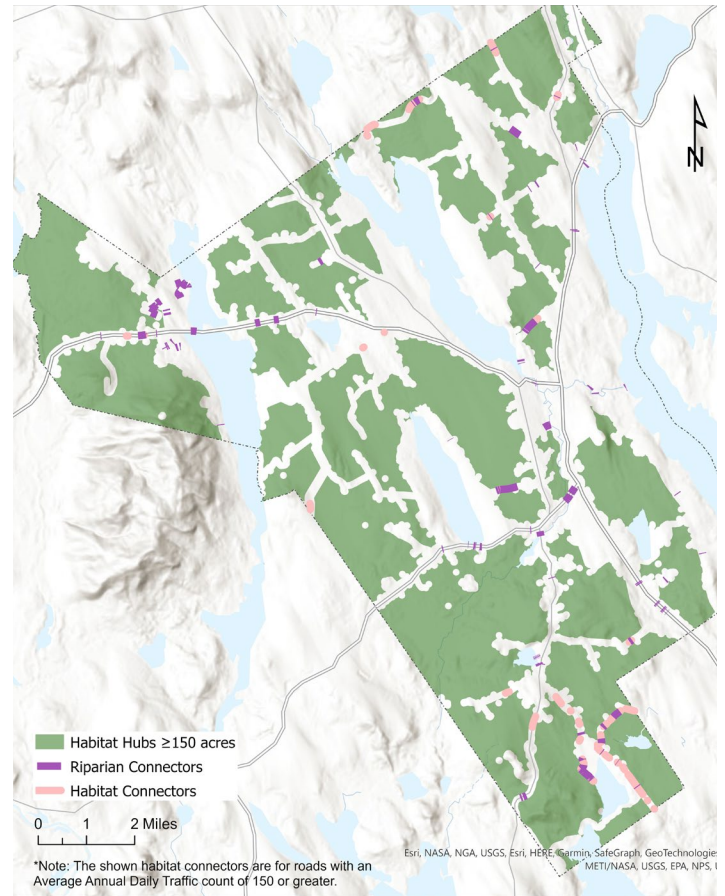
Mindee Goodrum

Bina Skordas

VIEWSHED partnered with FB Environmental to develop an Open Space Plan for the Town of Scarborough. The plan laid out a shared vision for an open space network that supports biodiverse ecosystems, community connections, and resilient working lands. The process was informed by a geospatial inventory of existing open space and environmental resource data, as well as virtual and in-person public outreach activities. After analyzing this information, the project team developed a map overlay of Open Space Focus Areas that identifies unprotected lands that are a high priority for conservation. These focus areas, along with the actionable strategies outlined by this plan, provide a path for the town to achieve its ambitious goal to conserve 30% of its land area by 2030, and ensure that lands with a high community and ecological value are maintained for future generations.

The project website can be seen here:

<https://bit.ly/ScarboroughOSP>



Open Space Plan

Town of Bridgton

Date Completed: July 2023

Reference:

Gary Colello
Recreation Director
(207) 647-1126
gcolello@bridgtonmaine.org

Team:

Madeline Tripp
Maggie Mills

VIEWSHED and FB Environmental developed an Open Space Plan for the Town of Bridgton, which set forth a vision for the Town's open space resources with a focus on resilience, connectivity, and activation. A key part of this process was engaging the public through a survey and other creative engagement activities. The public input, along with an in-depth open space analysis, was used to identify needs/opportunities and chart a vision for the town open spaces. The plan outlined attainable goals that would help the Town meet its shared vision. As a part of the plan process, VIEWSHED created an "Open Space Scorecard" as a tool to guide decision-makers when evaluating existing or prospective open space. This rubric was structured to help decision-makers make value- and data-driven land assessments to help support the plan's recommendations. This project was presented as the keynote address to the 2023 annual meeting of the Maine Association of Conservation Commissions (MEACC).

The Open Space Plan can be seen here:
<https://bit.ly/BridgtonOSP>



Open Space Plan

Town of Durham

Date Completed: Ongoing

Reference:

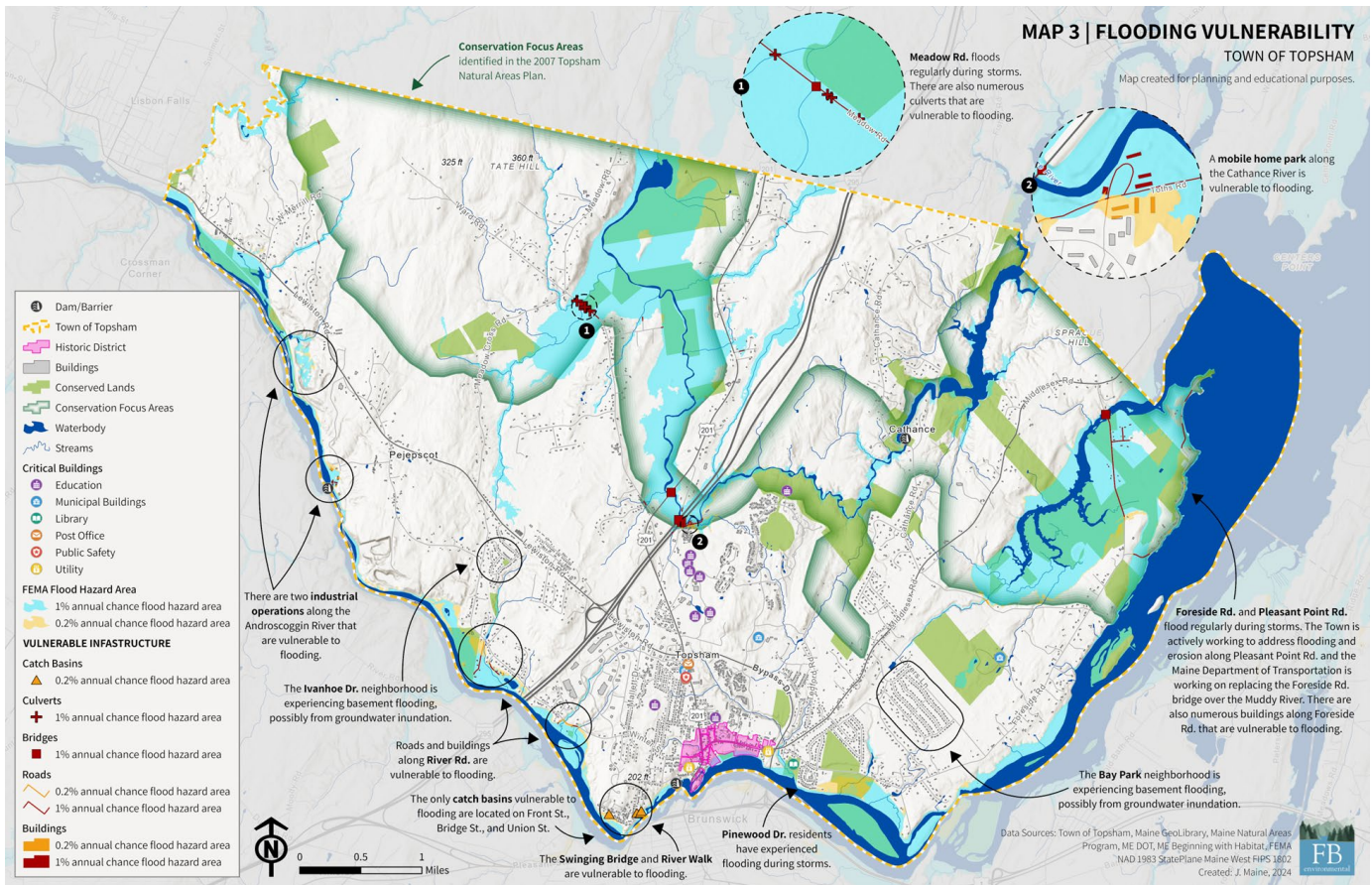
Jess Costa
Chair, Durham Conservation Commission
jessicacosta.durham@yahoo.com

Team:

Bina Skordas
Mindee Goodrum

FB Environmental is currently working with the Greater Portland Council of Governments and the Durham Conservation Commission to develop an Open Space Plan for the Town of Durham, Maine. This work is building off of the Town's 2018 Comprehensive Plan, which established conservation, natural resource protection, and preservation of rural character as key community priorities. The Town also set a goal to align with the State's goal of conserving 30% of their land by 2030. Thus far, the project team has completed an existing conditions analysis to establish the baseline conditions of Durham's open spaces, natural resources, and conservation assets. We have also conducted a survey and a public workshop to share existing condition information with the community and gather input on key resources, conservation priorities, and recreational opportunities in the Town. Next steps on the project include setting priorities for the acquisition and preservation of open space, continued public engagement opportunities, and consolidating information into a comprehensive Open Space Plan.

Updates can be found on the project website:
<https://www.durhamopenspaceplan.com>.



CLIMATE CHANGE VULNERABILITY ASSESSMENT

Town of Topsham

Date Completed: May 2025

Reference:

Skye Siladi
 Director of Planning, Town of Topsham
 ssiladi@topshammaine.com

Team:

Bina Skordas
 Julia Maine

FBE assessed the vulnerability of local infrastructure to current and future climate change impacts in Topsham, ME. FBE worked closely with Town Planning staff, the Topsham Energy Committee, and regional partners. The assessment identified key risks and vulnerable areas with a focus on infrastructure, public health, and safety. FBE reviewed existing reports and studies and developed a data collection plan. A detailed desktop analysis and GIS mapping analysis were conducted with input from local officials, including the Public Works Director, Fire Chief, and Brunswick-Topsham Water District. Community input from a survey and workshop was also integrated. The assessment will serve as a foundation for the Town’s ongoing Climate Action Plan update. To support this, FBE also developed a prioritized list of climate actions with the Town. This work directly built on the Topsham Open Space Plan developed by VIEWSHED.

Read the plan on the Town’s website: <https://www.topshammaine.com/climate-action-plan>.

Additional Project Examples



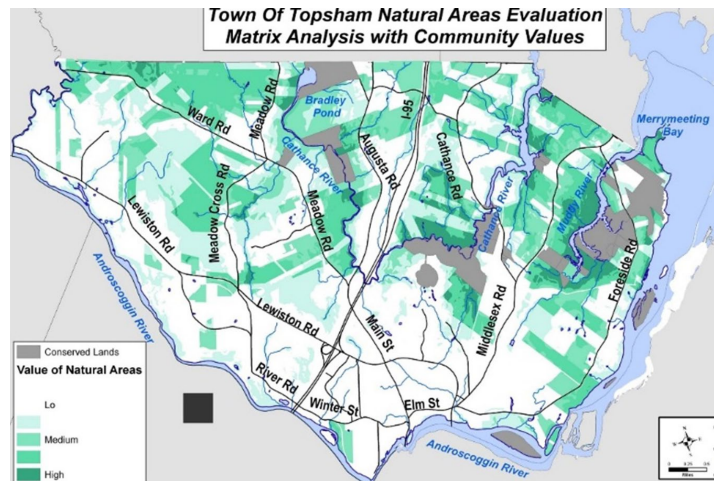
South Portland Open Space Plan



Bar Harbor Open Space Plan



Stratham, NH Open Space Plan



Topsham Natural Areas Plan



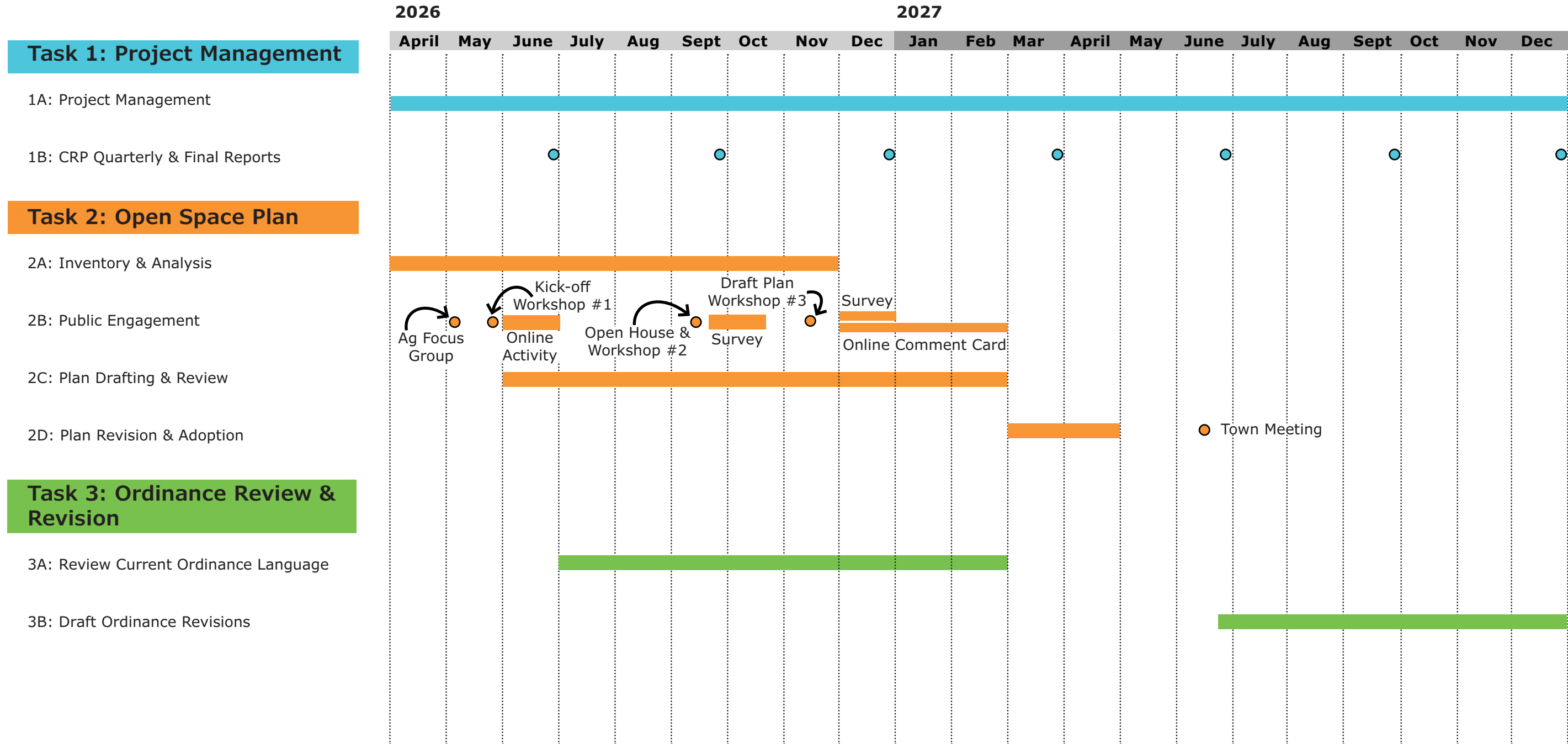
Augusta Parks & Recreation Master Plan



Kennebunkport Parks & Recreation Master Plan

SCHEDULE

Our Team developed the following schedule to optimize the timing of public engagement and to ensure the completion of deliverables to align with the Town meeting and the Community Resilience Partnership grant timeline.



FEE PROPOSAL

The following cost proposal includes estimations for each task in the scope of work and is not to exceed this amount. Costs for additional activities (such as additional surveys or meetings) can be provided.

Task	Fee
Task 1: Open Space Plan Administration	\$7,412
Task 2A: Inventory & Analysis	\$8,562
Task 2B: Public Engagement	\$16,134
Task 2C: Plan Drafting & Review	\$7,317
Task 2D: Plan Revision & Adoption	\$3,390
Task 3A: Review Current Ordinance Language	\$2,917
Task 3B: Draft Ordinance Revisions	\$4,802
Expenses (travel)	\$279
Total Cost	\$50,813

RESUMES

VIEWSHED



JUDY COLBY-GEORGE, GISP OWNER, PRINCIPAL

Judy Colby-George, GISP, is the owner and principal of VIEWSHED. She has over 30 years of experience helping clients to implement GIS and engage in complex spatial issues. Judy has extensive experience with public participation GIS and working with clients to understand the spatial relationships of various policies and programs. Her work ranges from creating and updating GIS datasets, development of online mapping applications, cartography, visualizations, viewshed analyses, and providing detailed analysis to solve client problems.

Judy believes that GIS is a tool that can help engage the public in the messy problems that face our world today, and work with clients to tell their stories, represent data in an understandable format, and invite a variety of people to the decision-making process.

SELECT EXPERIENCE

Open Space Plan
Scarborough, ME

Open Space Plan
Topsham, ME

Community Intertidal Data Portal
Casco Bay, ME

Comprehensive Plan
Harpwell, ME

Comprehensive Plan Public Participation
Cape Elizabeth, ME.

Comprehensive Plan Mapping, Utility Data
Management, GIS Services
Town of Falmouth, ME

Brunswick Sewer District
Brunswick, ME.

Zoning Analysis
City of Auburn, ME

Tax Map Development + Online Viewer
Norway, ME

Tax Map Development + Online Viewer
Pownal, ME

Tax Map Development + Online Viewer
Durham, ME

Tax Map Development + Online Viewer
Paris, ME

Property Valuation and Sea Level Rise
Island Institute, ME

Ocean Wind Viewshed Analysis
Coastal New Jersey

PROFESSIONAL AFFILIATIONS

Geospatial Professional Network
Maine GIS Users Group
Maine Association of Planners
New England URISA
American Association of Geographers

EDUCATION

University of Maine
Master of Ecology and Environmental Science

University of Wisconsin-Madison
Master of Land Resources with focus on GIS & Coastal Planning

University of Wisconsin-Madison
Bachelor of Science in Geography & Certificate of Environmental Studies

EMPLOYMENT

VIEWSHED (Formerly Spatial Alternatives)
Principal / Owner (2001 - present)
Yarmouth, ME

SELECT PRESENTATIONS

Building Community Using Geospatial Tools Workshop, GIS Pro, WV AGP Conference, 2024

Equity, Social Justice, and GIS, Maine Municipal Assoc. Tech Conference, 2019

Municipal GIS Process and Policy, Panel Discussion NEARC 2017

Introduction to Public Participation GIS, Workshop presented at GIS Pro 2016

VIEWSHED



HILARY OAT-JUDGE, PLA, LEED AP PRINCIPAL

Hilary Oat-Judge, PLA, LEED AP, has twenty years of experience in Landscape Architecture, designing projects of varied scales in the public and private realm. Some of her signature projects are the redesign of the Native Plant Garden at the New York Botanical Garden and the design of the Trellis Bridge at the Chicago Botanic Gardens. Hilary has extensive experience in site analysis, planning, developing construction document sets and performing construction administration for complex projects at all scales, from highly detailed residential work to multi-block city streetscapes. She has a particular interest in using all of the tools of the Landscape Architect to address current challenges. Her deep knowledge of native planting design, stormwater management, and sustainable design honed through decades of practice and volunteer work across the country gives her invaluable expertise for all types of projects.

SELECT EXPERIENCE

Island Point Park LWCF Conversion + Design
Lewiston, ME

Roosevelt Park Comprehensive Plan
Burlington, VT

Simard-Payne Memorial Park Master Plan
Lewiston, ME

Simard-Payne Memorial Park Ribbon Path
Lewiston, ME

Lewiston VPI
Lewiston, ME

Private Residences
Harpwell and Kennebunk, ME

Family Compound Master Plan
Kennebunkport, ME

Eastern Market Metro Plaza Master Plan +
Washington, DC

SELECT AWARDS

AIA DC Award of Excellence: Eastern Market Metro
Plaza

ASLA Honor Award for General Design: NYBG
Native Plant Garden

ASLA National Community Service Award: ASLA
Legacy Project Coolidge HS

EDUCATION

University of Pennsylvania School of Design
Master of Landscape Architecture

Williams College
Bachelor of Arts in History with Highest Honors

EMPLOYMENT

VIEWSHED
Principal Landscape Architect
Yarmouth, ME (2024 - present)

Oat-Judge Landscape Architecture
Principal
Washington, DC (2015-2024)

Oehme, van Sweden | OvS
Senior Associate
Washington, DC (2007-2015)

Sotheby's
Senior Administrator, Impressionist & Modern Art
New York, NY (2000-2004)

PROFESSIONAL LICENSES/CERTIFICATIONS

Maine Licensed Landscape Architect: LAR 5854
Connecticut Licensed Landscape Architect: LAR.0001192
Maryland Licensed Landscape Architect: 3837
Virginia Licensed Landscape Architect: 0406002004
LEED AP, GBCI# 0010012351, Issued August 26, 2008, non-expiring
Member, American Society of Landscape Architects (ASLA)
Member, Built Environment Plus/USGBC

+ Denotes work while at Oehme, van Sweden

VIEWSHED



MADELINE TRIPP

GIS & PUBLIC ENGAGEMENT SPECIALIST

Madeline is a GIS Specialist at VIEWSHED. She is passionate about developing online maps & interactive tools that make data approachable & create actionable knowledge. Madeline has experience collaborating with a wide range of stakeholders, from clam harvesters to researchers to utility workers, to create maps that help people solve problems. One of her favorite aspects of being a geographer is learning about new topics from clients and translating them into maps and applications they need. Some key projects she has worked on include the Community Intertidal Data Portal for Casco Bay, conducting a map-based vulnerability assessment for the Town of Arrowsic, Maine, and working with the Town of Scarborough, Maine on a data- and community-driven Open Space Plan.

SELECT EXPERIENCE

Open Space Plan + Online Applications
Scarborough, ME

Open Space Plan
Bridgton, ME

Parks + Recreation Master Plan
Augusta, ME

Community Intertidal Data Portal
Casco Bay Area, ME

Roosevelt Park Comprehensive Plan
Burlington, VT

Comprehensive Plan
Harpwell, ME

Climate Action Plan
Arrowsic, ME

Planning Partnership Initiative
South Sanford, ME

Village Partnership Initiative
Hamden, ME

Village Partnership Initiative
Bangor, ME

Climate Resilience Hub Design
State of Maine

Invasive Species Management Map Viewer
Prouts Neck, ME

Climate Change Observatory Story Map
Casco Bay Area, ME

Intertidal Access Mapping
Freeport, ME

PROFESSIONAL AFFILIATIONS

Geospatial Professional Network, Vanguard Cabinet Member

EDUCATION

East Carolina University
Bachelor of Science in Geography
Minor in Community Planning + Certificate in GIS

EMPLOYMENT

VIEWSHED
GIS Specialist (2022 - present)
Yarmouth, ME

Tidal Bay Consulting
Consultant
Freeport, ME (2021-2022)

Greater Portland Council of Governments
Americorps Resilience Fellow
Casco Bay, ME (2020-2021)

North Carolina Coastal Federation
Coastal Resilience & Living Shorelines Fellow
Newport, NC (Summer 2018)

PRESENTATIONS / PUBLICATIONS

“Web Accessibility: Designing for All” Workshop, Maine Americorps Member Conference, March 2021.

Facilitator, Environmental Justice Panel with former EPA Administrators, East Carolina University, March 2019



BINA SKORDAS

Senior Project Manager & Climate Solutions Lead

Bina has over 12 years of experience in natural resources project management across the Northeastern and Western United States. She specializes in outreach and communication related to complex natural resource projects. She leads research efforts, authors technical reports, and analyzes and interprets data for a wide range of projects. Bina has established strong working relationships with federal, state, and municipal agencies, delivering high-quality, impactful solutions for diverse clients.

EXPERTISE

- Natural Resource Permitting
- Stakeholder Engagement
- Municipal Planning
- ICLEI ClearPath
- Public Meeting Facilitation
- Community Planning
- Science Communication
- Habitat Assessment & Restoration
- Clean Water Act Compliance
- Storm Water Permitting & Compliance
- Statistical Analyses

EDUCATION

M.S. Environmental Public Health & Policy
Westminster College (2020)

B.S. Natural Resource Conservation & Environmental Science
University of British Columbia (2012)

PRESENTATIONS

Skordas, B., Caffé, L. (2024). Northern New England Planning Conference, Stowe, Vermont.

"A River Runs Through it: Successful Methods to Engage a Community."

Skordas, B. Kelly-Boyd, M. (2023). Save Our Shores Conference, Saco, Maine: "Working with Proactive Communities in Coastal Maine on Climate Resilience."

MEMBERSHIPS

American Planning Association, Northern New England Chapter

Climate Change Adaptation Providers Network

SELECT PROJECTS

Municipal & Community Planning

Megunticook River Watershed Project (2022-Present)

Camden, ME | Role: Project Manager | [Website](#)

Multi-year project funded in part by a \$1.6M National Fish and Wildlife Foundation grant to support Megunticook River restoration. Collaborates with the Town of Camden and engineering consultant Inter-Fluve to oversee the grant, coordinate and negotiate with landowners, lead extensive public outreach through multiple events, and manage a Town citizens advisory committee.

Ecosystem Vulnerability Assessment (2023-2024)

Rockport, ME | Role: Project Manager

Assisting Rockport in identifying areas most vulnerable to climate change and provide recommendations for managing their natural resources for the future.

Open Space & Connectivity Planning (2022-2024)

Stratham, NH | Role: Project Manager | [StoryMap](#)

Collaborated with the Town of Stratham and the dedicated Committee to design implementable and achievable goals and strategies that ensure the town continues to offer outstanding open space and recreation opportunities.

Environmental Public Engagement & Outreach

Conducts effective and respectful facilitation for communities, municipal boards and councils, and larger stakeholder groups.

EPA Stormwater Assistance for Environmental Justice Communities

Massachusetts | 2023-2024 | Role: Facilitator

Comprehensive Plan Meeting Presentations & Facilitation

Yarmouth, ME | 2024 | Role: Facilitator

Brunswick, ME | 2022 | Role: Facilitator

Watershed Management Plan Facilitation & Engagement

Capsic Brook, Portland & Westbrook, ME | Role: Project Manager

Mare Brook, Brunswick, ME | Role: Project Manager

PREVIOUS PROFESSIONAL EXPERIENCE

Environmental Planner *Town of Brunswick, Maine*

Environmental Scientist, NEPA specialist, Project Manager *SWCA Environmental Consultants*

Sustainability Manager *Park City, Utah*



MAGGIE MILLS

Senior Project Manager & Hydrologist

Maggie specializes in surface water and shallow groundwater hydrology, focused on natural resource management and planning. She leads projects on water quality monitoring, lake and stream restoration, stormwater management, climate change resiliency, and community engagement. Working at FBE since 2015, Maggie collaborates with private entities, government agencies, and municipalities to integrate natural resources into planning and development.

EXPERTISE

- Hydrology & Biogeochemistry
- Stormwater Hydrology
- Surface Water Chemistry & Nutrient Cycling
- Community Planning & Leadership
- Watershed Management Planning
- Meeting Facilitation & Public Process
- GIS Spatial Analysis
- Programming in R & MATLAB
- Data Synthesis & Analysis

EDUCATION

M.A. Geography

University of Colorado, Boulder, in collaboration with the Institute of Arctic & Alpine Research (2014)

B.S. Ecology & Environmental Science

University of Maine, Orono (2012)

CERTIFICATIONS

Stormwater Hydrology Certificate (2019)

University of New Hampshire, Durham

PUBLICATIONS

Berryman, EM, et al. 2015. Complex terrain alters temperature and moisture limitations of forest soil respiration across a semi-arid to subalpine gradient. *Journal of Geophysical Research: Biogeosciences*, 120(4), 707-723.

Burns (Mills), et al. 2016. Dissolved organic matter transport reflects hillslope to stream connectivity during snowmelt in a montane catchment. *Water Resources Research*, 52(6), 4905-4923.

Gabor, RS, et al. 2015. Influence of leaching solution and catchment location on the fluorescence of water-soluble organic matter. *Environmental Science & Technology*, 40(7), 4425-4432.

SELECT PROJECTS

Climate Resiliency Planning

Leads scientific assessments of vulnerable natural resources and infrastructure to inform climate resilience planning in Maine's coastal communities. Includes partnerships with engineers to develop alternative analyses for vulnerable infrastructure.

Environmental, Cultural, & Issues Assessment & Community Workshop (2022)

Peaks Island, ME | Role: Project Manager | [Report](#)

Vulnerability Assessment and Action Plan (2022)

Town of Gouldsboro, ME | Role: Project Manager | [Plan](#)

Corea Rd Tidal Crossing & Crowley Island Rd Causeway Improvements (Present)

Town of Gouldsboro, ME | Role: Project Manager

Open Space & Watershed Planning

Projects typically involve leading a steering committee/technical task force, hosting community and stakeholder engagement events, and performing modeling and monitoring to support natural resource management. Agency collaboration includes Maine Department of Environmental Protection, NH Department of Environmental Services, Natural Resources Conservation Service, & US Environmental Protection Agency.

Lake Winnepesaukee Watershed Management Plans, NH

Alton Bay, Center Harbor, & the Broads | Present | Role: Project Manager

Moultonborough Bay and Winter Harbor | 2020 | Role: Project Manager | [Plan](#)

Stratham Open Space & Connectivity Plan (2024)

Stratham, NH | Role: Project Manager | [Plan](#)

Willard Beach Master Plan (2023)

South Portland, ME | Role: Project Manager | [Plan](#)

Municipal Comprehensive Planning

Leads integration of natural resources and climate change resilience for Comprehensive and Master Plans in ME & NH, covering topics like transportation, housing, economic development, land use planning, and cultural resources. Oversees community engagement on natural resource planning and climate resilience.

Comprehensive Plans

Town of Freeport, ME | Present | Role: Project Manager

Town of Bar Harbor, ME (update) | Present | Role: Project Manager

Town of Harpswell, ME (update) | 2024 | Role: Project Manager | [Plan](#)

Town of Wells, ME (update) | 2023 | Role: Project Manager | [Plan](#)

Master Plans

Town of Hampton, NH | Role: Project Manager | [Plan](#)



MINDEE GOODRUM

Project Manager & Watershed Restoration Lead

Mindee specializes in leading projects focused on stormwater management and erosion control, municipal and watershed planning, ecological monitoring and restoration, and community engagement. She is experienced in preparing grant applications, technical writing, and creating outreach materials. Mindee excels at collaborating with a wide range of stakeholders to communicate project results and ensure a successful outcome.

EXPERTISE

- Stormwater Best Management Practices
- Watershed Management Planning
- Watershed Surveys
- Meeting Facilitation
- Grant Writing
- Terrestrial Invasive Plant ID
- Native Tree and Shrub ID
- ME and NH Shoreland Permitting
- Landowner Technical Assistance
- Trail Design and Maintenance
- Volunteer Coordination
- Community Planning

EDUCATION

B.S. Environmental Science
Saint Michael's College (2018)

PUBLICATIONS

Reyes-Puig, et al. 2019. A new species of terrestrial frog of the genus *Noblella* Barbour, 1930 (Amphibia: Strabomantidae) from the Llanganates-Sangay Ecological Corridor, Tungurahua, Ecuador. PeerJ 7:e7405.
<https://doi.org/10.7717/peerj.7405>

SELECT PROJECTS

Comprehensive & Master Planning

Manages projects to contribute to municipal comprehensive and master planning in Maine and New Hampshire. Includes preparation of natural resource, open space, and climate change inventory chapters and strategies and participation in community outreach.

Select Plans

Harpswell, ME Comprehensive Plan Update | Role: Project Manager | 2024

Yarmouth, ME Comprehensive Plan Update | Role: Project Support | 2024 | [Plan](#)

Willard Beach Master Plan | South Portland, ME | Role: Technical Support | 2024 | [Plan](#)

Watershed Planning

Manages the development of nine-element or alternative Watershed Management Plans with the goal of protecting or restoring water quality in local lakes or streams. Includes conducting watershed and shoreline surveys, overseeing data analysis and modeling, and presenting findings to stakeholders.

Select Watershed Management Plans

Perkins Pond | Sunapee, NH | Present | Role: Project Manager

Banfield Brook | Conway and Madison, NH | 2024 | Role: Project Manager

Natural Resource & Resilience Planning

Leads a variety of resilience and open space planning projects. Organizes community engagement on natural resource planning and climate resilience.

Scarborough Open Space Plan

Scarborough, ME | Role: Project Manager | 2025

Cherryfield Riverwalk Shoreline Stabilization & Vegetation Management Plan

Cherryfield, ME | Role: Project Manager | Present

Green Infrastructure at the Topsham Fair Mall

Topsham, ME | Role: Project Manager | 2023 | [StoryMap](#)

Watershed Restoration & Protection

Manages projects to implement a watershed management plan to improve water quality through stormwater management. Includes providing technical assistance, preparing environmental permit applications, and leading steering committees.

Spofford Lake Watershed Restoration Project, Phase II & III

Chesterfield, NH | Role: Project Manager | 2024

Topsham Fair Mall Stream Watershed Restoration Project, Phase III

Topsham, ME | Role: Project Manager | 2024

SDYMCA Camp Lincoln Erosion Mitigation

Kingston, NH | Role: Project Manager | 2024-Present



JULIA MAINE

Project Manager & Coastal Science Lead

Julia brings experience in marine resources, community planning, and energy analytics across New England. With expertise in coastal geology, data analysis, GIS mapping, and science communication, she leads projects focused on climate resilience, nature-based solutions, and flooding hazards. Julia excels in collaborating with diverse stakeholders, including municipalities, universities, and private sector clients, to deliver impactful, data-driven solutions. As a native of Chebeague Island, ME, Julia understands the needs of small communities and works to find innovative solutions to meet their goals.

EXPERTISE

- Science Communication
- Community Planning
- Climate Vulnerability Assessment
- Nature-based Solutions
- Website Development
- Data Synthesis & Analysis (R Studio)
- GIS Mapping & Analysis
- Data Visualization & Communication (Tableau)
- Decision Support Tool Development
- Scientific & Technical Writing
- Green House Gas Inventories

EDUCATION

M.S. Coastal & Marine Environments
University of Galway, Ireland (2022)

B.S. Earth & Oceanographic Science
Bowdoin College (2016)

PUBLICATIONS

Maine, J. Visual Impacts of Offshore Wind in Western Ireland: Pairing Marxan and GIS to develop a novel method for Seascape Visual Impact Assessment using the Sceirde Rocks Relevant Project Site as a case study. 2022. University of Galway, Ireland, Master of Science Thesis. [Link](#)

PRESENTATIONS

Maine J (7/23/2024). Calling Your Bluff Symposium, Portland, ME. Coastal Retreat: A case study of the Hook, Chebeague Island, ME. [Link to presentation recording.](#)

SELECT PROJECTS

Climate Vulnerability Assessment & Action Planning

Leads and supports climate change vulnerability assessments and climate action planning that require data analysis, GIS mapping, technical writing, and community engagement as well as a familiarity with local climate policies.

Spatial Analyst: Merrimack Watershed Conservation Planning (2024-2025)

Merrimack Watershed MA & NH | The Nature Conservancy | Role: Project Manager

Climate Adaptation Pilot Project: Flood Resilience (Present)

Phillips, ME | The Nature Conservancy | Role: Project Manager

Coastal Resilience Planning (Present)

Hampton, NH | Role: Project Manager

Climate Change Vulnerability & Resilience Assessment (2024-2025)

Eliot, ME | Role: Project Manager

Infrastructure Vulnerability Assessment & Climate Action Planning (2024-2025)

Topsham, ME | Role: Project Manager

Targeted Climate Vulnerability Assessment (2024-2025)

Chebeague Island, ME | Role: Project Manager

Coastal Infrastructure Risk Assessment (2024-2025)

Kittery, ME | Role: Project Support

Megunticook River Watershed Project (2023-Present)

Camden, ME | Role: Project Support | [Website](#)

30 Mile Watershed Septic System Risk Assessment (2023)

Central ME | Role: Project Manager | [Interactive Mapper](#)

PROFESSIONAL EXPERIENCE

Chebeague Island Climate Action Team (2023-Present)

Volunteer Member | Chebeague Island, ME

Southern Maine Climate Action Planning Cohort (2022-2023)

Southern Maine Planning & Development Commission | [Website](#)

Climate Ready Coast-Southern Maine (2022-2023)

Southern Maine Planning & Development Commission | [Website](#)

Energy Analytics & Sustainability Services

Competitive Energy Services | [Website](#)