

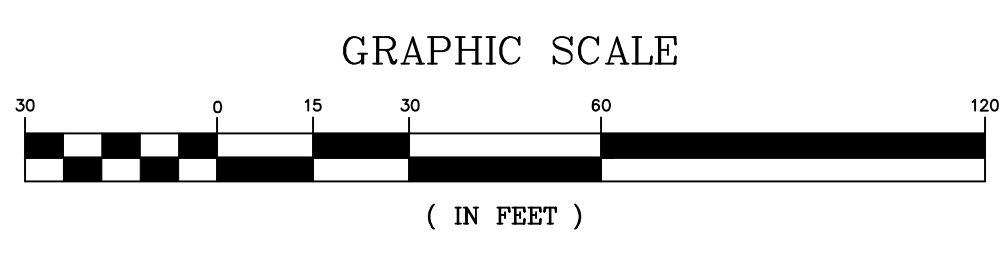
PROPOSED SITE PLAN
SCALE: 1" = 30'

BASELINE CURVE TABLE							
CURVE NO.	LENGTH	RADIUS	TANGENT	DELTA	CHORD BEARING	START STATION	END STATION
C-1	216.62	619.94	109.43	20°01'14"	S51°11'15"W	11+08.47	13+25.09
C-2	220.06	682.50	110.99	18°28'25"	S50°54'51"W	13+25.09	15+45.15
C-3	298.46	138.00	259.08	123°54'59"	S1°48'26"E	16+54.60	19+53.06
C-4	129.64	101.00	75.48	73°32'26"	N79°27'51"E	19+53.06	20+82.69
C-5	17.31	45.00	8.76	22°02'13"	N31°40'31"E	20+82.69	21+00.00
C-6	45.18	400.00	22.62	6°28'19"	S58°27'43"W	10+63.29	11+08.47

LEGEND	
DESCRIPTION	SYMBOL
EDGE OF GRAVEL	--- ---
EDGE OF PAVEMENT	====
PAVED SIDEWALK	=====
RECLAIMED AGGREGATE PATH	=====
CURBING	=====

- NOTES:
1. FOR PROPOSED UTILITIES, SEE SHEET 5.
 2. FOR PROPOSED GRADING, SEE SHEET 6.
 3. FOR ROADWAY PROFILE, SEE SHEET 7.
 4. FOR ROADWAY TYPICAL SECTIONS, SEE SHEET 9.
 5. FOR LANDSCAPING PLAN, SEE SHEET 10.

G:\Projects\2021\21018 Waterfront Ph2.dwg\21018 Ph2-C2 SITEPLAN.dwg 03/13/25 3:59pm



REV	DATE	STATUS	BY	CHKD	APPD
1	3/13/2025	ACCESS RD LOCATION, PARKING, LIGHTS	JET	RLP	RLP
0	8/1/2024	ISSUED FOR BIDDING	JET	JRP	RLP

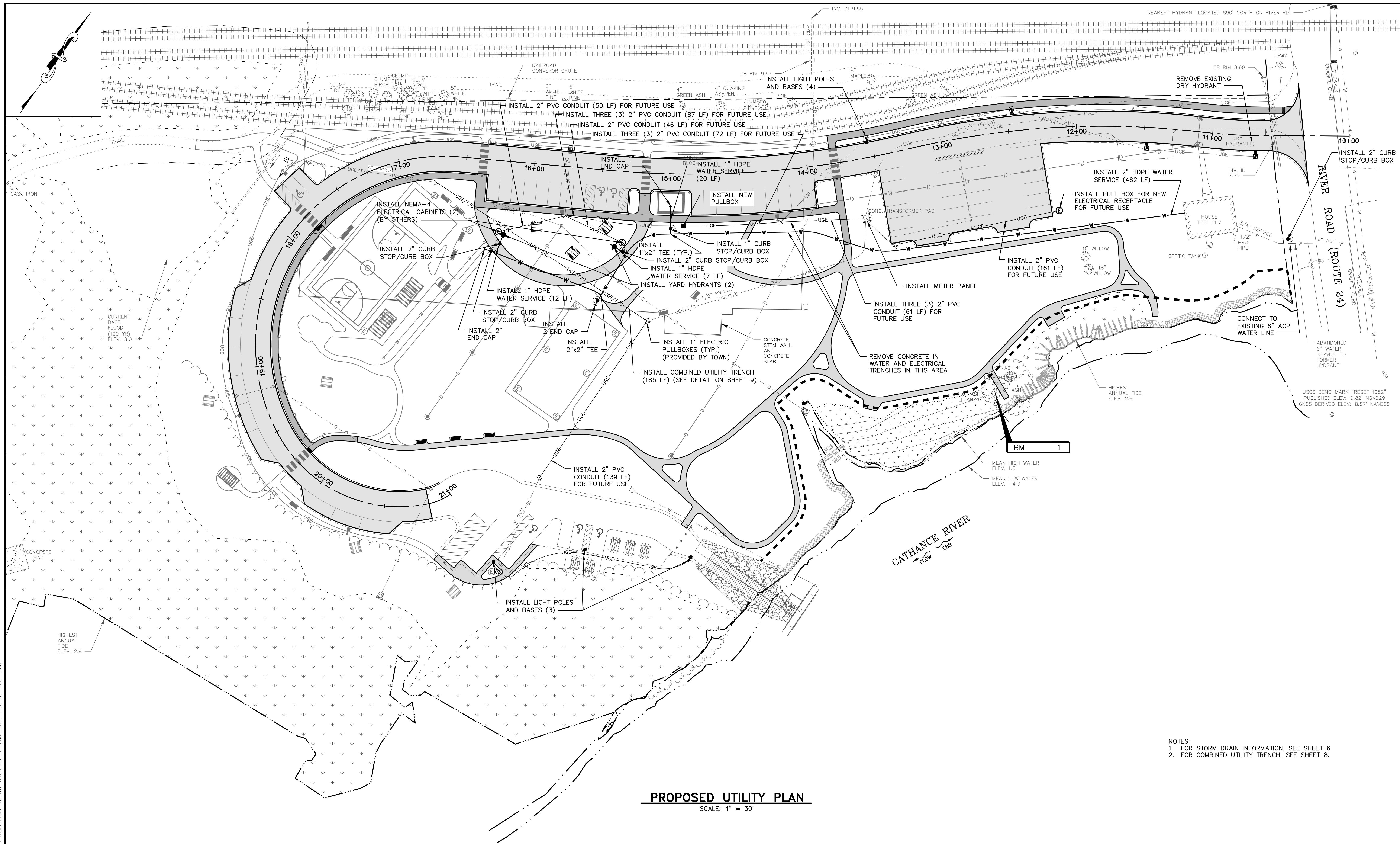
DESIGNED BY: JRP/RLP
 DRAWN BY: JET
 CHECKED BY: JRP
 APPROVED BY: RLP
 DATE: 8/1/2024

Pine Tree Engineering
 Civil/Environmental Engineering + Surveying
 53 Front Street
 Bath, Maine 04530
 Tel: (207) 443-1508
 Fax: (207) 442-7029

CLIENT
TOWN OF BOWDOINHAM
 13 SCHOOL STREET
 BOWDOINHAM, MAINE 04008

PROJECT
WATERFRONT PARK IMPROVEMENTS
PHASE 2 - CONTRACT NO. 2
SITE IMPROVEMENTS

SCALE AS SHOWN
 PROJECT NO. 21018
 TITLE **PROPOSED SITE PLAN**
 DRAWING NO. 21018 Ph2-C2 SITEPLAN
 SHT. **4 of 11** REV. 1

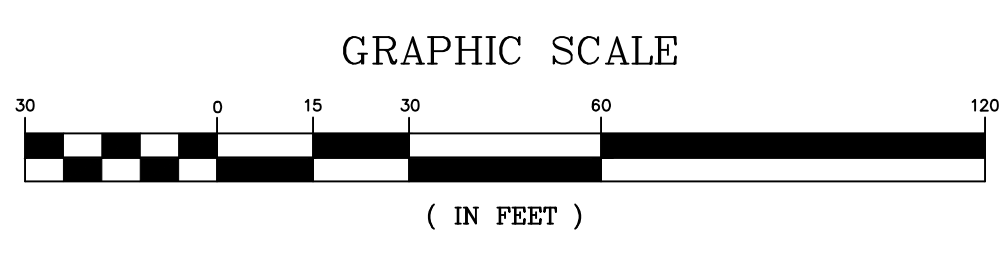


PROPOSED UTILITY PLAN

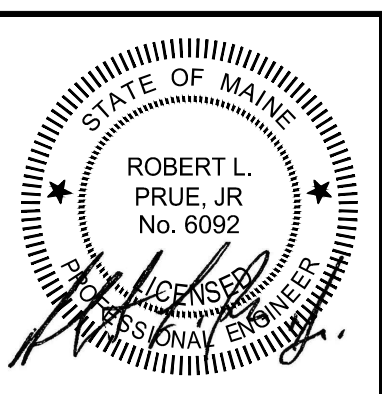
SCALE: 1" = 30'

- NOTES:
 1. FOR STORM DRAIN INFORMATION, SEE SHEET 6
 2. FOR COMBINED UTILITY TRENCH, SEE SHEET 8.

G:\Projects\2021\21018 Waterfront Ph2.dwg\21018 Ph2-C2 UTILITY.dwg 03/13/25 3:59pm



REV	DATE	STATUS	BY	CHKD	APPD
1	3/13/2025	ACCESS RD LOCATION, PARKING, LIGHTS	JET	RLP	RLP
0	8/1/2024	ISSUED FOR BIDDING	JET	JRP	RLP

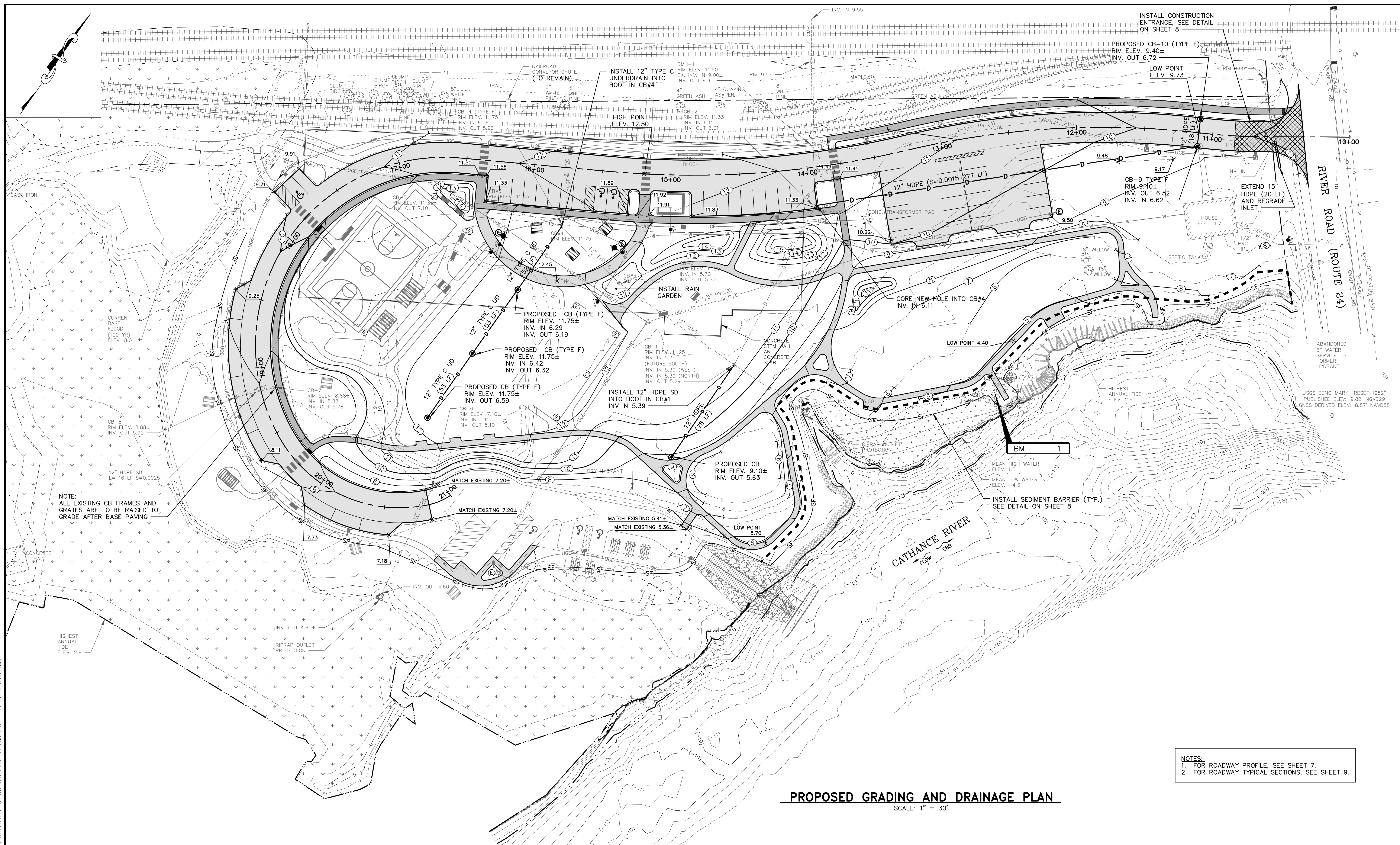


DESIGNED BY: JRP/RLP
 DRAWN BY: JET
 CHECKED BY: JRP
 APPROVED BY: RLP
 DATE: 8/1/2024

Pine Tree Engineering
 Civil/Environmental Engineering + Surveying
 53 Front Street
 Bath, Maine 04530
 Tel: (207) 443-1508
 Fax: (207) 442-7029

CLIENT
TOWN OF BOWDOINHAM
 13 SCHOOL STREET
 BOWDOINHAM, MAINE 04008

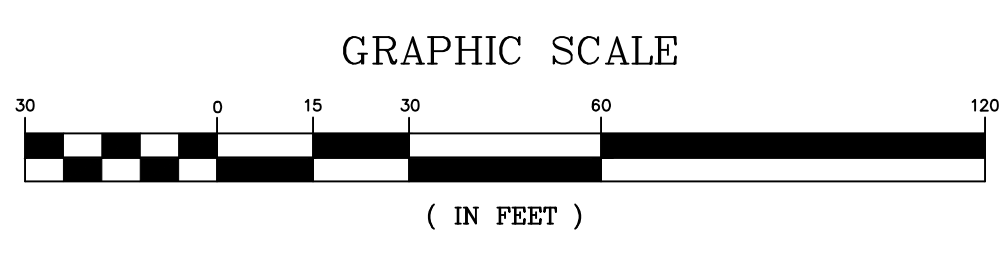
PROJECT	SCALE
WATERFRONT PARK IMPROVEMENTS PHASE 2 - CONTRACT NO. 2 SITE IMPROVEMENTS	AS SHOWN
TITLE	PROJECT NO. 21018
PROPOSED UTILITY PLAN	DRAWING NO. 21018 Ph2-C2 UTILITY
	SHT. 5 of 11
	REV. 1



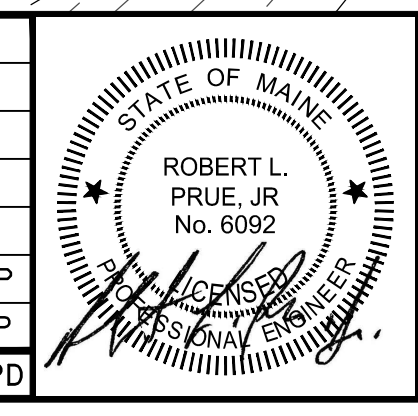
NOTE:
ALL EXISTING CB FRAMES AND GRATES ARE TO BE RAISED TO GRADE AFTER BASE PAVING

NOTES:
1. FOR ROADWAY PROFILE, SEE SHEET 7.
2. FOR ROADWAY TYPICAL SECTIONS, SEE SHEET 9.

PROPOSED GRADING AND DRAINAGE PLAN
SCALE: 1" = 30'



REV	DATE	STATUS	BY	CHKD	APPD
1	3/13/2025	ACCESS RD LOCATION, PARKING, LIGHTS	JET	RLP	RLP
0	8/1/2024	ISSUED FOR BIDDING	JET	JRP	RLP



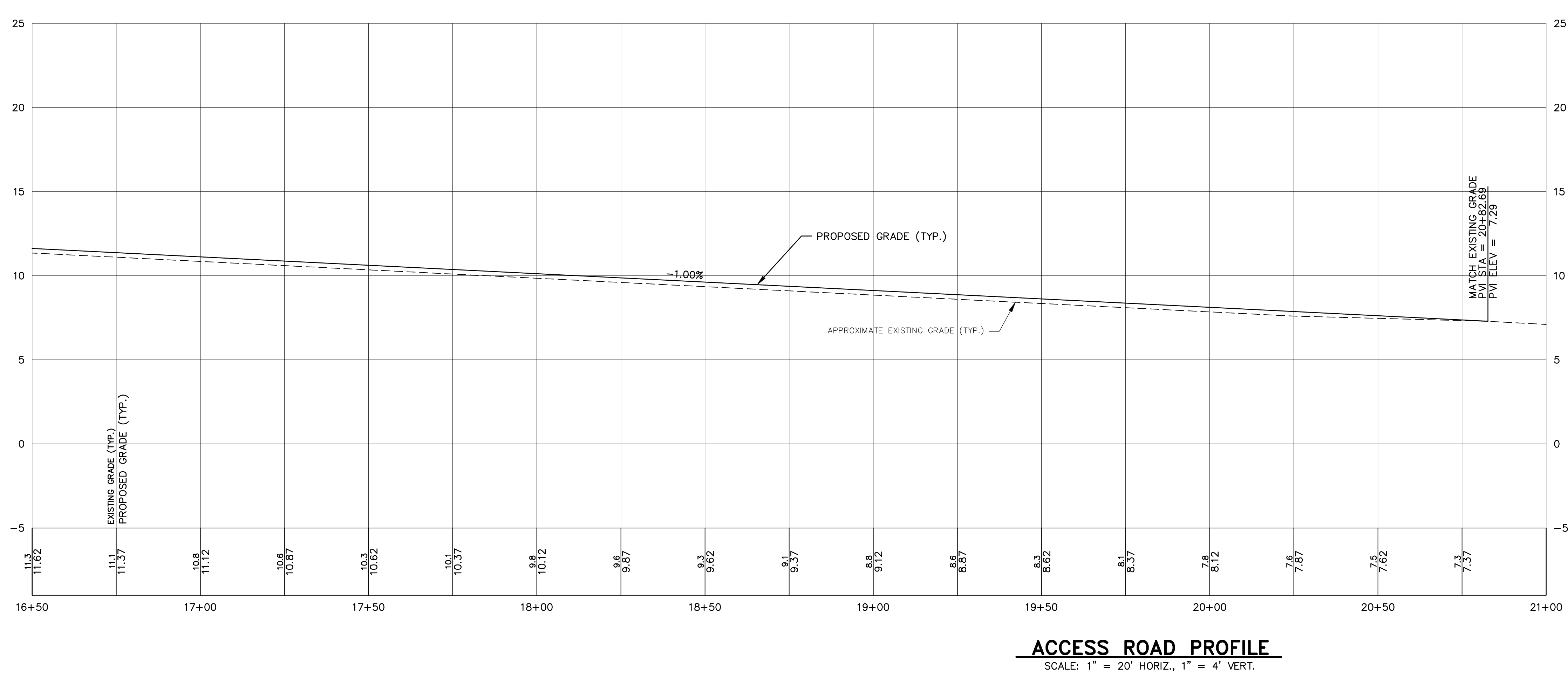
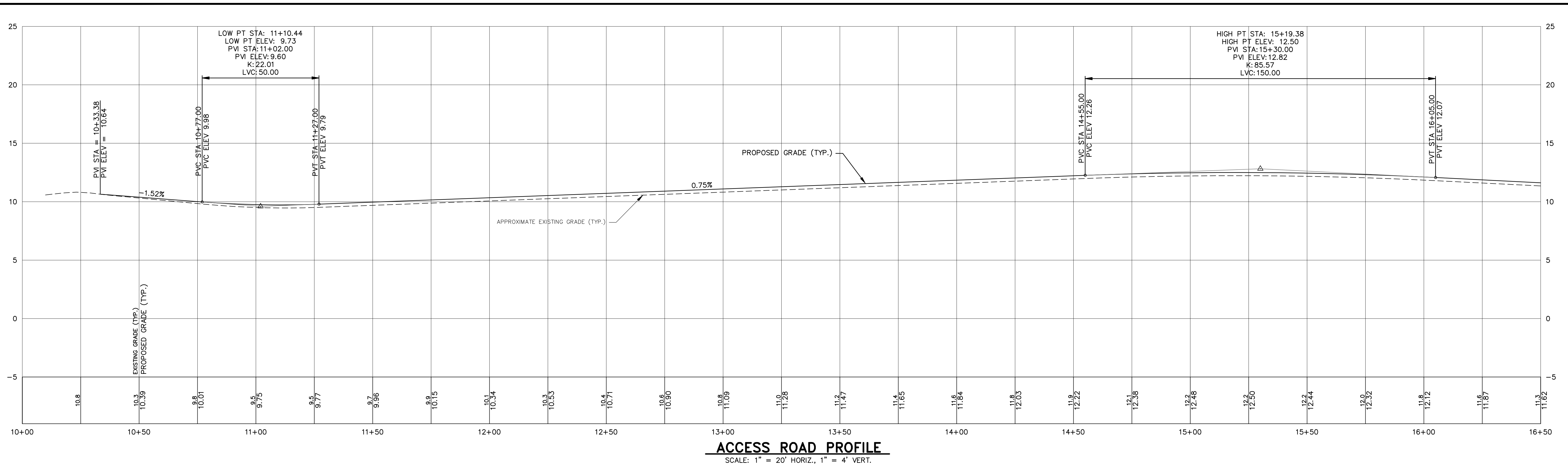
DESIGNED BY: JRP/RLP
DRAWN BY: JET
CHECKED BY: JRP
APPROVED BY: RLP
DATE: 8/1/2024

Pine Tree Engineering
Civil/Environmental Engineering + Surveying
53 Front Street
Bath, Maine 04530
Tel: (207) 443-1508
Fax: (207) 442-7029

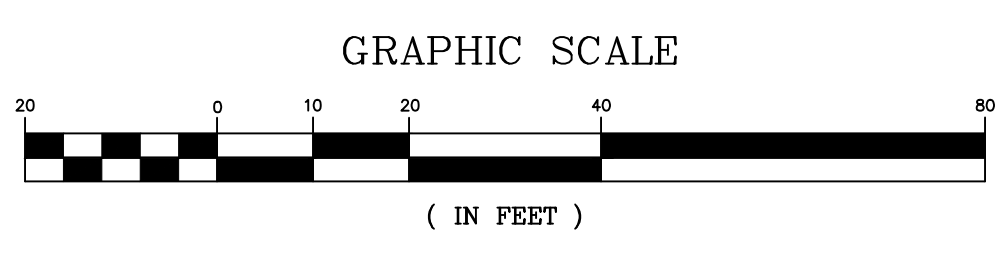
CLIENT
TOWN OF BOWDOINHAM
13 SCHOOL STREET
BOWDOINHAM, MAINE 04008

PROJECT	SCALE
WATERFRONT PARK IMPROVEMENTS PHASE 2 - CONTRACT NO. 2 SITE IMPROVEMENTS	AS SHOWN
TITLE	PROJECT NO.
PROPOSED GRADING AND DRAINAGE PLAN	21018
	DRAWING NO.
	21018 Ph2-C2 GRADING
	SHT. 6 of 11
	REV. 1

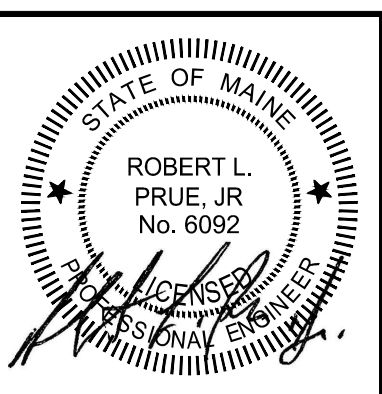
G:\Projects\2021\21018 Waterfront Ph2.dwg\21018 Ph2-C2 GRADING.dwg 03/13/25 3:59pm



G:\Projects\2021\21018 Waterfront Ph2.dwg\21018 Ph2-C2 PROFILE.dwg 03/13/25 3:59pm



REV	DATE	STATUS	BY	CHKD	APPD
1	3/13/2025	ACCESS RD LOCATION, PARKING, LIGHTS	JET	RLP	RLP
0	8/1/2024	ISSUED FOR BIDDING	JET	JRP	RLP



DESIGNED BY: JRP/RLP
 DRAWN BY: JET
 CHECKED BY: JRP
 APPROVED BY: RLP
 DATE: 8/1/2024

Pine Tree Engineering
 Civil/Environmental Engineering + Surveying
 53 Front Street
 Bath, Maine 04530
 Tel: (207) 443-1508
 Fax: (207) 442-7029

CLIENT
TOWN OF BOWDOINHAM
 13 SCHOOL STREET
 BOWDOINHAM, MAINE 04008

PROJECT
WATERFRONT PARK IMPROVEMENTS
 PHASE 2 – CONTRACT NO. 2
 SITE IMPROVEMENTS
 TITLE
ACCESS ROAD PROFILE
 STA. 10+00 TO STA. 22+75

SCALE AS SHOWN
 PROJECT NO. 21018
 DRAWING NO. 21018 Ph2-C2 PROFILE
 SHT. 7 of 11 REV. 1