

April 14, 2021

Darren Carey, Planner
Bowdoinham Planning Board
13 School Street,
Bowdoinham, Maine 04008



Re: Supplemental information requested for North Fire LLC PB review

Dear Darren and Board Members,

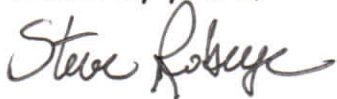
On behalf of the North Fire LLC, we are pleased to submit this supplemental information that was requested during the completeness review at the last Planning Board meeting. I have listed the additional information below:

1. We are finalizing a new lease agreement between Southworth LLC to North Fire LLC for the operations of the growing facility at the Carding Machine Road garage location.
2. We have added the well location and security lights to the site plan.
3. We have attached a catalog cut of the security lights to be installed on the building.
4. We have added species of tree types for the sideline landscape buffering to the site plan.
5. We have attached a front and side elevation of the existing and proposed building addition.
6. The proposed building expansion will be constructed with materials similar to the existing construction. This includes concrete slab, wood framed structure, vinyl siding and trim and asphalt shingles.
7. The facility will require an upgrade from the existing overhead electric line to a 400 amp service.

8. The existing drilled well has a water flow of 20 gpm at the time it was drilled. We expect to use 75 gallons of water per day for the facility growing needs with 15 % runoff that is recycled. The plants utilize 85%.
9. The facility will utilize a sealed grow environment with a scrubbing system consisting of 4 - 10" carbon filters/1000 sf. The manufacturer name is Can-Fan and model name is Max Fan 10". We have attached the manufacturer's information with this submission. This odor management plan is in operation at our other facilities with no complaints registered to date.
10. We have hired Jim Mancini, septic site evaluator to locate the new septic disposal system for the facility. The HHE 200 forms are being drafted at this time. Wastewater from the growing operations will be discharged to this system
11. Discarded plant material will be placed in large contractor bags, zip tied and placed into a locked dumpster onsite.
12. The growing operations will use CO₂ for the facility.
13. During construction of the building addition, the Contractor will be required to use Best Management Practices (ie downslope silt fence) for erosion control.
14. Brad has spoken with Darren concerning the security plan to be employed at this facility.

Please contact me (or Brad Moll) if you have any questions.

Sincerely yours,



Stephen Roberge, PE
for SJR Engineering Inc.

Attachments: North Fire LLC site plan set
Updated supplemental application materials

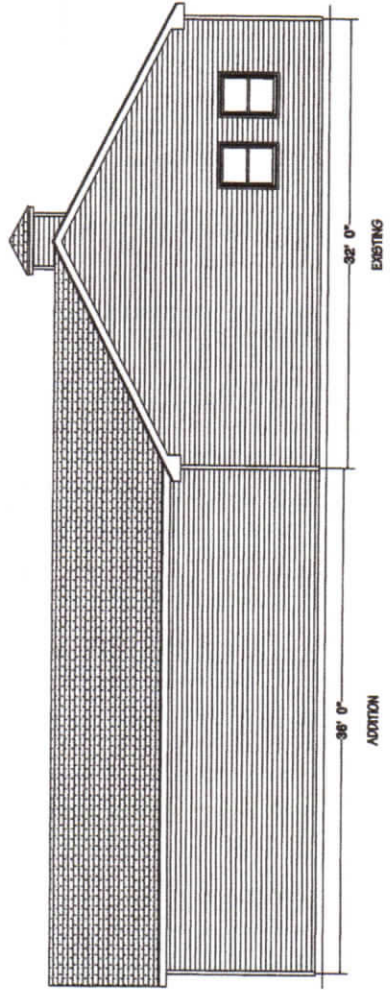
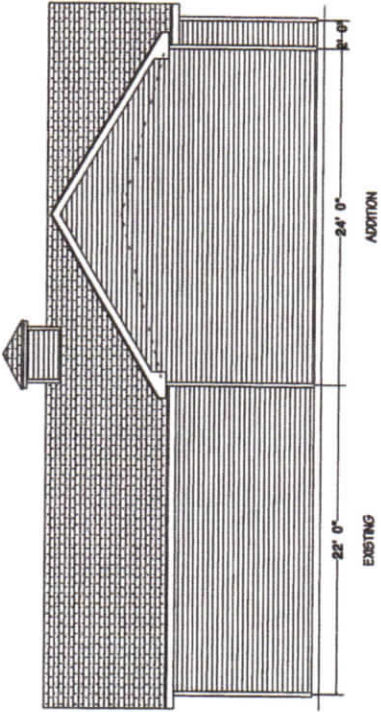
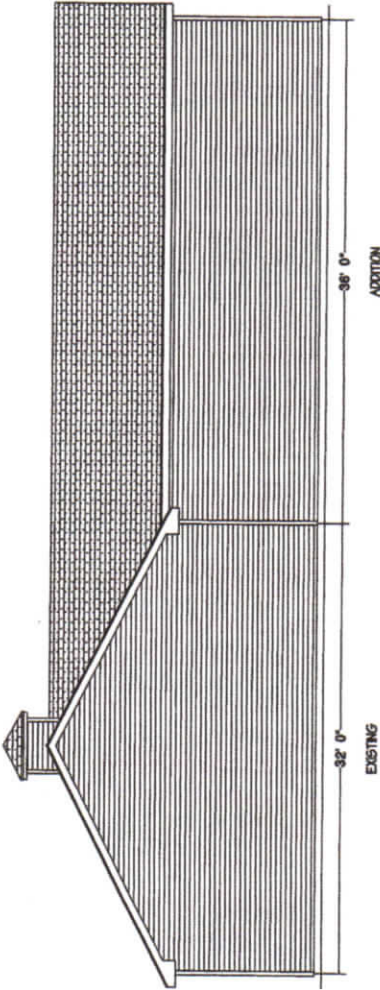


TRISTONE INDUSTRIES
259 CARDING MACHINE ROAD
ADDITION

THIS INFORMATION IS PROVIDED TO OUR CUSTOMERS AS A SERVICE OF HANCOCK LUMBER. CUSTOMERS SHOULD APPROPRIATELY VERIFY THAT THE INFORMATION IS NOT THE SOURCE PRODUCT OF ANY OTHER ENTITY. HANCOCK LUMBER DOES NOT AND WILL NOT MAKE ANY REPRESENTATIONS OR WARRANTIES WITH REGARD TO ANY DESIGN OR CONSTRUCTION OF ANY PROJECT WITH AN ADDITION. CUSTOMERS MAY WANT TO CONSULT WITH AN ARCHITECT OR ENGINEER BEFORE PROCEEDING WITH ANY PROJECT. HANCOCK LUMBER IS NOT A CONTRACTOR AND DOES NOT GUARANTEE THE ACCURACY OF THE INFORMATION FOR ANY PURPOSE OF THE CUSTOMER.

REVISIONS:

DATE: APRIL 2012
SCALE: 3/16" = 1'-0"
DESIGNER: E. INNESS
PROJECT: AK0240921





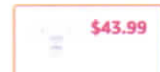
LEPOWER 45W LED Security Lights Motion Sensor Light Outdoor, 4500LM Motion Flood Light, 5000K, IP65 Waterproof, Durable Adjustable 3 Head Sensor Light Motion Detector for Garage, Yard, Patio, Porch

Visit the LEPOWER Store 537 ratings

Price: **\$43.99** & FREE Returns

Get \$70 off instantly: Pay \$0.00 ~~\$43.99~~ upon approval for the Amazon Prime Rewards Visa Card. No annual fee.

Color: **White**



- Color** White
- Brand** LEPOWER
- Finish** Powder Coated
- Type**
- Material** Metal(except motion sensor head & connected part)
- Style** Modern

About this item

- 45W Super Brightness & Energy Saving: Powered by Samsung LED lamp beads as the security light source, enables this motion security light to produce up to 4500 LM at low-power of 45W; With professional optical designed filter lens, this led outdoor security light provides better illumination(soft light, anti-glare 5000K white light) than normal chips; Save more than 80% electricity bill compared with

\$43.99 & FREE Returns

FREE delivery: **Tuesday, April 6**
Order within 14 hrs and 28 mins
[Details](#)

In Stock.

Qty: 1

Add to Cart

Buy Now

Secure transaction

Ships from Amazon
Sold by LePower

Add a Protection Plan:

- 4-Year Protection for \$8.99
- 3-Year Protection for \$5.99

Add a gift receipt for easy returns

Deliver to Melanie - Yarmouth 04096

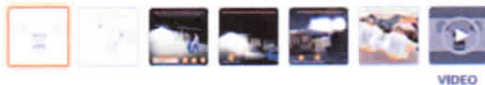
Add to List

Share

Have one to sell?

Sell on Amazon

Roll over image to zoom in



equivalent traditional halogen bulbs 225W.

- **High Sensitivity Motion Sensor Lights:** Lepower led security lights can be triggered by the moving human, cars or animals up to 72FT detection distance at 180°wide sensing angle (General, most led motion lights being sold on Amazon are only 49FT); Keep your home secure 24/7 and convenient.
- **Durable Aluminum Design & IP65 Waterproof:** The motion flood lights outdoor is made of durable aluminum, have excellent heat dissipation, which is more sturdy than other brands; The lifespan of motion light will be up to 50,000hrs; Upgraded IP65 waterproof, can be against any type of terrible weather like a rainstorm, sleet or snow, perfect for the porch, back yard, front door, garage, driveway, walkway, step, etc. ETL certificated, this motion detector light brings extra safety to your home.
- **Flexible Adjustable Design & Easy Installation:** Easy & flexible to adjust the 3 flood light heads & motion sensor head to a different angle as your requirement. This outdoor motion security light can be easily installed for wall mounting and eave mounting by following a few simple wiring steps.
- **Flexible Stepless Switch Design:** When the motion sensor outdoor light is triggered, the lighting time is 10s-10min (Max.). The switch of sensitivity and time upgrade into stepless, which means that you can customize the sensing range of this led outdoor motion light from 0-72FT and lighting time from 0-10 minutes.

› [See more product details](#)

Customer ratings by feature

Thickness	4.8
Brightness	4.7
Value for money	4.7
Easy to install	4.6

[See all reviews](#)

[Compare with similar items](#)

[Report incorrect product information.](#)

Similar item to consider



[Amazon Basics 20W Waterproof LED Outdoor Motion Sensor Security Light with 2 Adjustable](#)



Home > Filters > Can-Filter 75 Without Flange 600 CFM

Can-Filter 75 Without Flange 600 CFM

SKU: 700629



At a Glance

Each Original Can-Filter® uses the most conceptually sound, granular carbon, packed-bed design to deliver the best performing carbon filter on the market. Even with the industry's thickest carbon bed, at 2.5 in, the Can Original provides for some of the lowest pressure drops, even on smaller size filters. This hefty granular carbon bed effectively makes the Original filter the "biggest sponge" for VOC removal capable of holding massive amounts of contaminant leading to a lifespan that leaves other filters, frankly, in the dust. The Original Can-Filter® are designed for the control of VOCs (paint fumes, hydrocarbons, etc...), odors and other gaseous contaminants. Built with the same proven packed bed design and granular virgin activated carbon we've used for 30 years, this line of time tested activated carbon air filters sets the standard for long life, consistent performance and low pressure drop. Rated at a conservative 0.1 sec

contact time, the Original Can-Filter® provide excellent value and confidence.

Details

- Made in North America
- 7 sizes from 33-150cm, largest in industry
- You pick the flange that's right for you
- Low pressure drop even on smaller sizes
- Granular carbon delivers the cleanest filter available
- 2.5" Carbon bed, thickest in industry
- Flange comes separate to fit a wide range of fans and applications

TECHNICAL DATA RECOMMENDED FANS

Max Exhaust CFM: 600CFM / 1000 m³h @ 0.1 sec contact time

Max Recirculating (Scrubbing) CFM: 1200 CFM / 2000 m³h

Recommended Min Airflow: 300 CFM / 500 m³h

Pre-filter: Yes

Flange: 6", 8", 10", 12"

Dimensions: (with pre-filter)

Outside Diameter: 42cm / 16.5"

Height: 75cm / 29.5"

Carbon Bed Depth: 6.5cm / 2.56"

Max Operating Temp: 80°C

Pressure drop at max CFM: 180pa/ .75"wg

FAN Watts Consumed Filtered Air CFM

Max-Fan 12" 475 Watts 1080 CFM

Max-Fan 10" 225 Watts 747 CFM

Can-Fan 10" HO 270 Watts 595 CFM

Max-Fan 8" 162 Watts 550 CFM

Can-Fan 8" HO 280 Watts 550 CFM

Can-Fan 8" 130 Watts 407 CFM

Can-Fan 6" HO 136 Watts 338 CFM

Call us:

(888) 478-6544

Fax:

(888) 478-6555

contact@canfilters.com